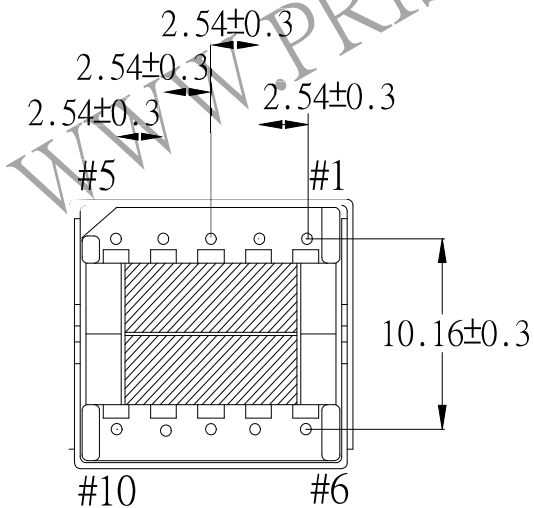
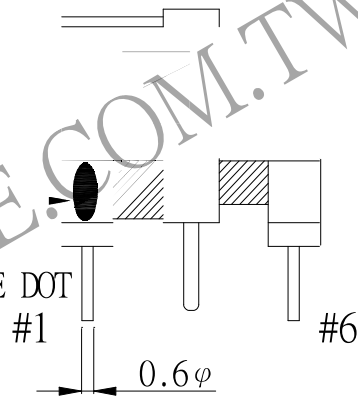
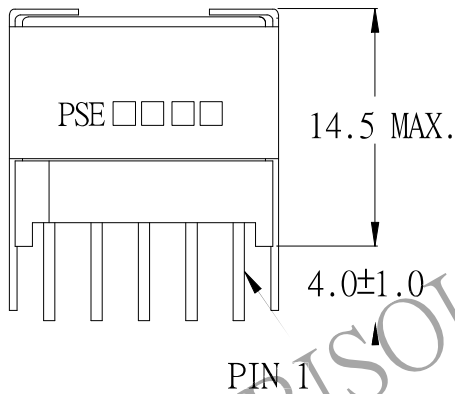
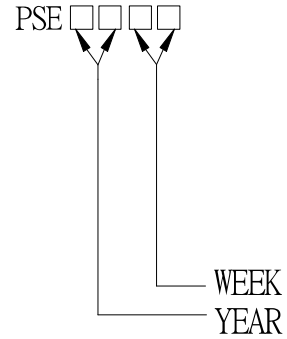
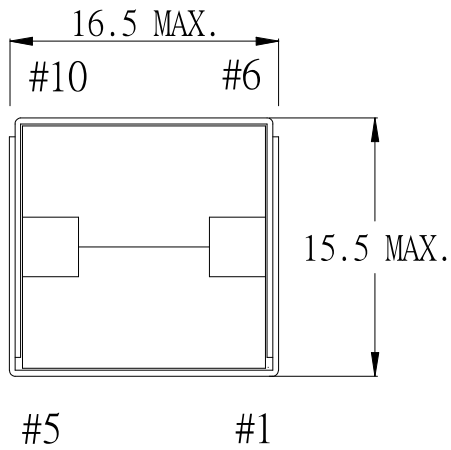


1. MECHANICAL & ASSEMBLY :



NOTE:

1. ADHESIVE EP-138 FIXED BETWEEN CORE & CORE (TTL:2 POINTS)
2. WITH WHITE DOT ON PIN 1

UNIT : m/ m

REPORT BY	CHECK BY	APPROVED BY	CUSTOMER :	DATE
			PART NO : 83P-17007	REV NO.
			ISSUE NO :	PAGE
				4 - 1

2. WINDING CONFIGURATION:

STEP	WINDING	MARGIN TAPE	START-FINISH	COPPER WIRE	TURNS	LAYER TAPE	METHOD
1	W1		1 - 2	0.18 ϕ	33	1T	CLOSE
2	W2		2 - 3	0.18 ϕ	33	1T	CLOSE
3	W3		6 - 7	0.18 ϕ	33	1T	CLOSE
4	W4		7 - 8	0.18 ϕ	33	1T	CLOSE
5	W5a		5 -	0.18 ϕ	6	2Ts	SPACE
6	W5b		- 10	0.18 ϕ	5	2Ts	SPACE

NOTE:

3. ELECTRICAL CHARACTERISTICS:

PIN NO.	INDUCTANCE 1.0 KHz, 0.3Vrms	LEAKAGE INDUCTANCE KHz, Vrms	VOLTAGE RATIO(V) f= 20KHz INPUT 1 Vrms	DCR MAX AT 25°C
1 - 2	1.74mH \pm 30%			0.55 Ω
2 - 3			0.9973Vrms \pm 3.0%	0.6 Ω
6 - 7			0.9703Vrms \pm 3.0%	0.55 Ω
7 - 8			0.9697Vrms \pm 3.0%	0.6 Ω
5 - 10			0.3280Vrms \pm 4.0%	245.0m Ω

HI-POT TEST : (AT 5 mA, 2 SEC)

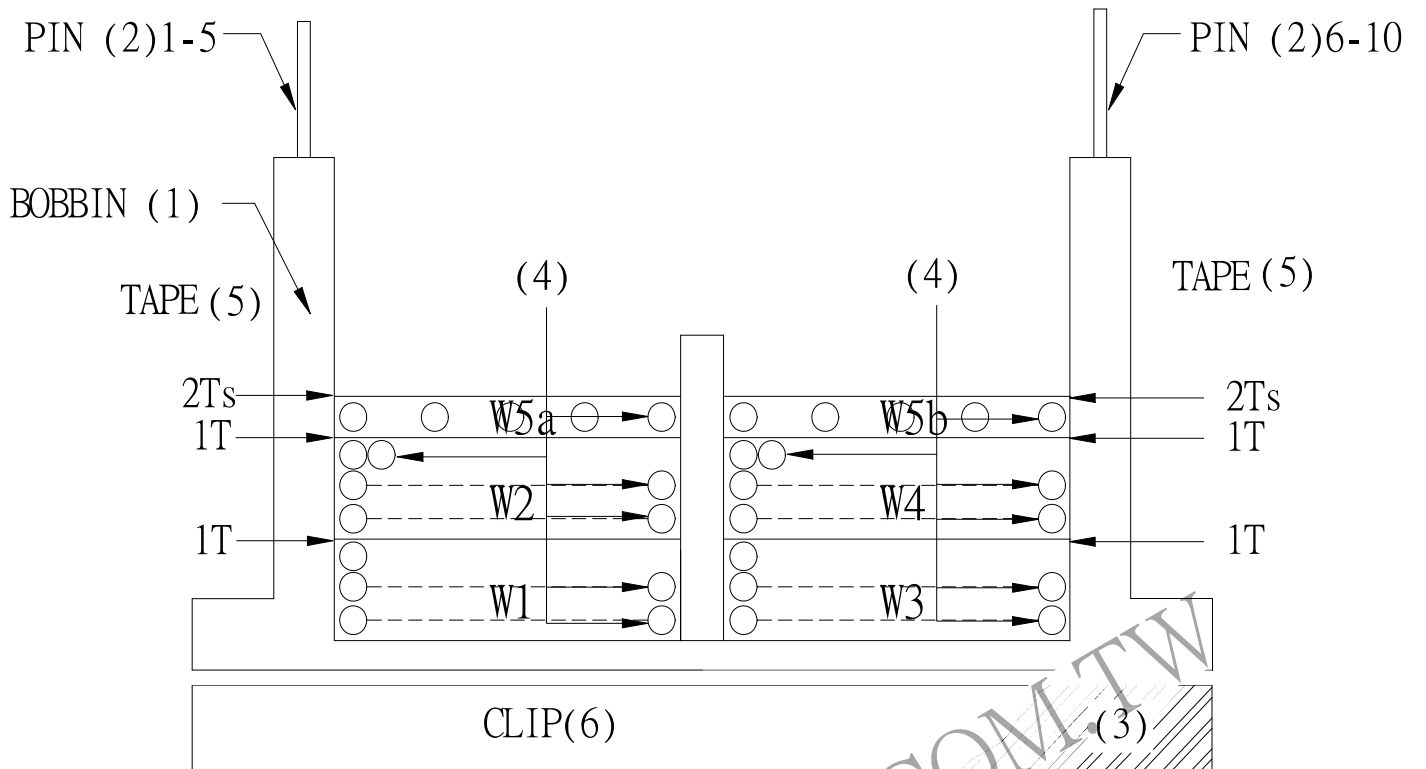
W1, W2 TO W3, W4 1500 VAC
W5 TO W1, W2, W3, W4 600 VAC

INSULATION RESISTANCE: (AT DC 500V)

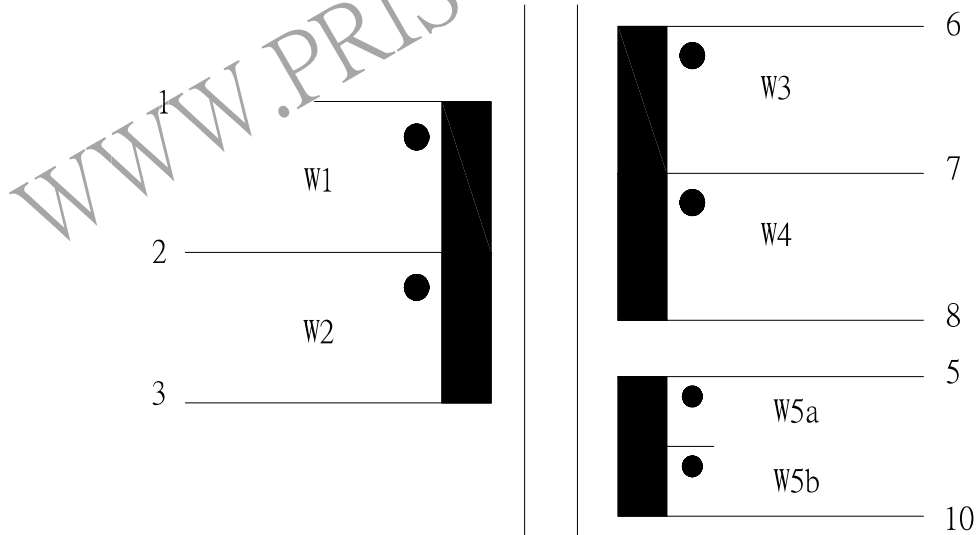
W1, W2 TO W3, W4 100 M Ω MIN.
W5 TO W1, W2, W3, W4 100 M Ω MIN.

REPORT BY	CHECK BY	APPROVED BY	CUSTOMER :	DATE
			PART NO : 83P-17007	REV NO.
			ISSUE NO :	PAGE 4 - 2

4. WINDING SEQUENCE:



5. SCHEMATIC:



REPORT	BY	CHECK	APPROVED BY	CUSTOMER :	DATE	
				PART NO : 83P-17007	REV NO.	
				ISSUE NO :	PAGE	4 - 3