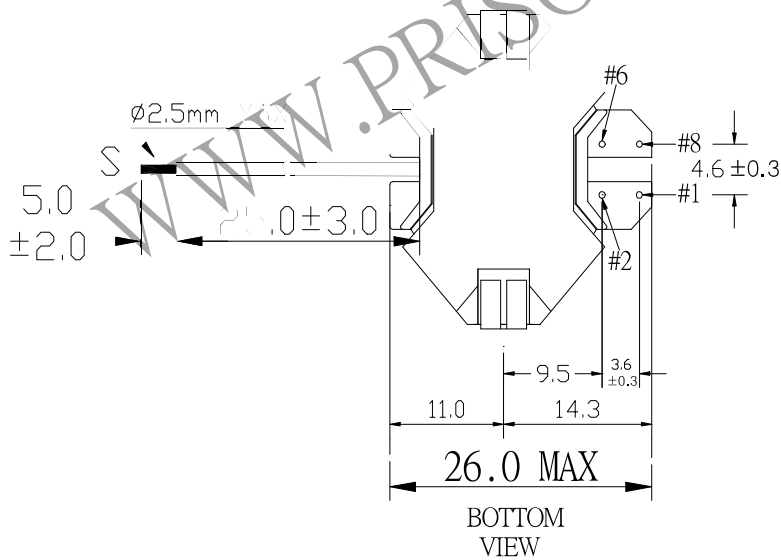
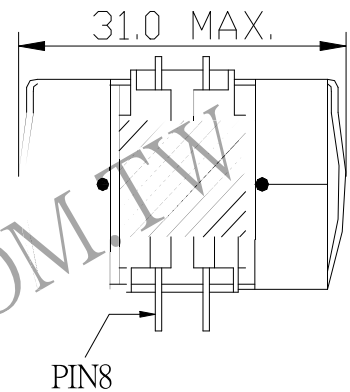
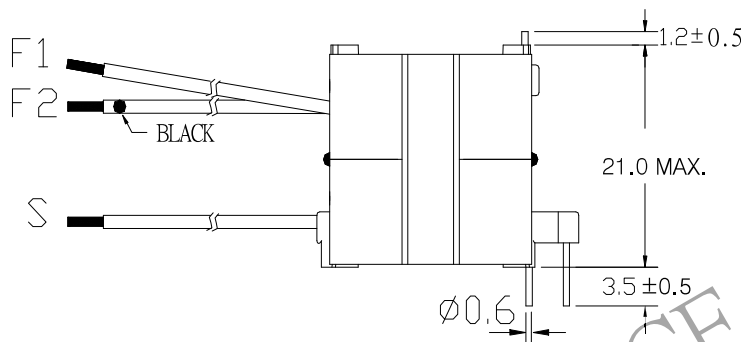
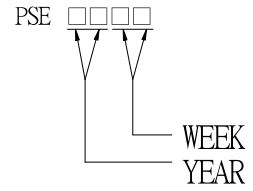
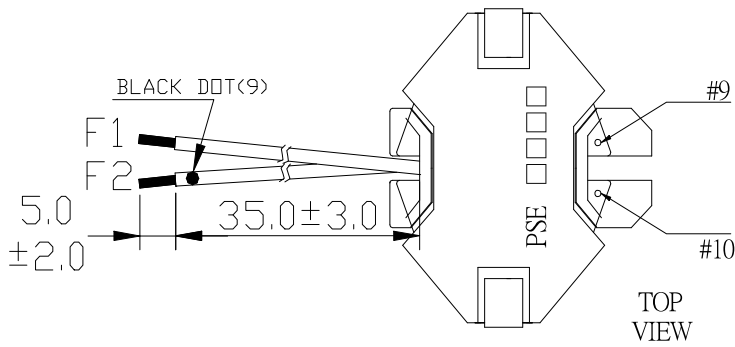


1. MECHANICAL & ASSEMBLY :



NOTE:

1. EPOXY FIXED BETWEEN CORE & CORE (TTL:4 POINTS)
2. MEET "SBI5.1" CLASS B INSULATION SYSTEM E181448
3. ADD ONE DROPS OF GLUE INSIDE OF THE CORE TOP.

UNIT : mm

REPORT BY	CHECK BY	APPROVED BY	CUSTOMER :	DATE	
			PART NO : 83P-17002	REV NO.	
			ISSUE NO :	PAGE	4 - 1

2. WINDING CONFIGURATION :

STEP	WINDING	MARGIN TAPE	START-FINISH	COPPER WIRE	TURNS	TUBE	LAYER TAPE	METHOD
1	P1		6 - 9	0.40 ϕ	22		1T	SPACE
2	SHIELD 1		1 - 10	0.15 ϕ	56		1T	CLOSE
3	S1		S - F1	TIW-3 0.2 X2	12	#20	1T	CLOSE
4	S2		S - F2	TEX-E 0.4 X2	8		1T	CLOSE
5	SHIELD 2		1 -	t0.05 \times 10	1		1T	CLOSE
6	P2		9 - 8	0.40 ϕ	22		1T	CLOSE
7	P3		1 - 2	0.15 ϕ	9	#28	3Ts	CLOSE

NOTE:

3. ELECTRICAL CHARACTERISTICS :

PIN NO	INDUCTANCE 10 KHz, 1.0Vrms	LEAKAGE INDUCTANCE KHz, Vrms	VOLTAGE RATIO(V) f= 20KHz	DCR(MAX) AT 25°C
6 - 8	340 μ H \pm 10%		INPUT 1 Vrms	0.4 Ω MAX.
S - F1			0.2709Vrms \pm 4.0%	205.0 m Ω MAX.
S - F2			0.1818Vrms \pm 4.0%	41.0 m Ω MAX.
1 - 2			0.2076Vrms \pm 4.0%	0.65 Ω MAX.

HI-POT TEST : (AT 5 mA, 2 SEC.)

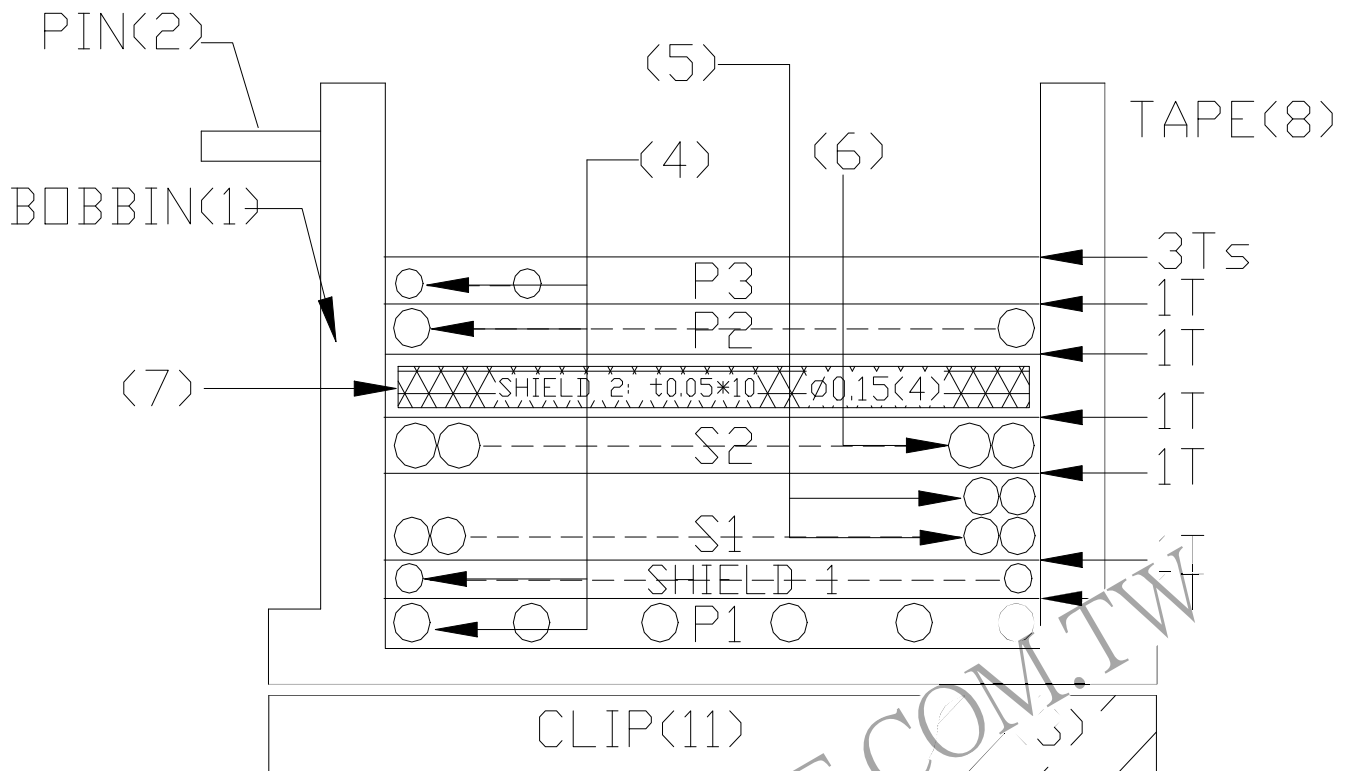
PRI, CORE TO SEC 3600 VAC
 PRI. TO CORE 600 VAC

INSULATION TEST : (AT DC500V)

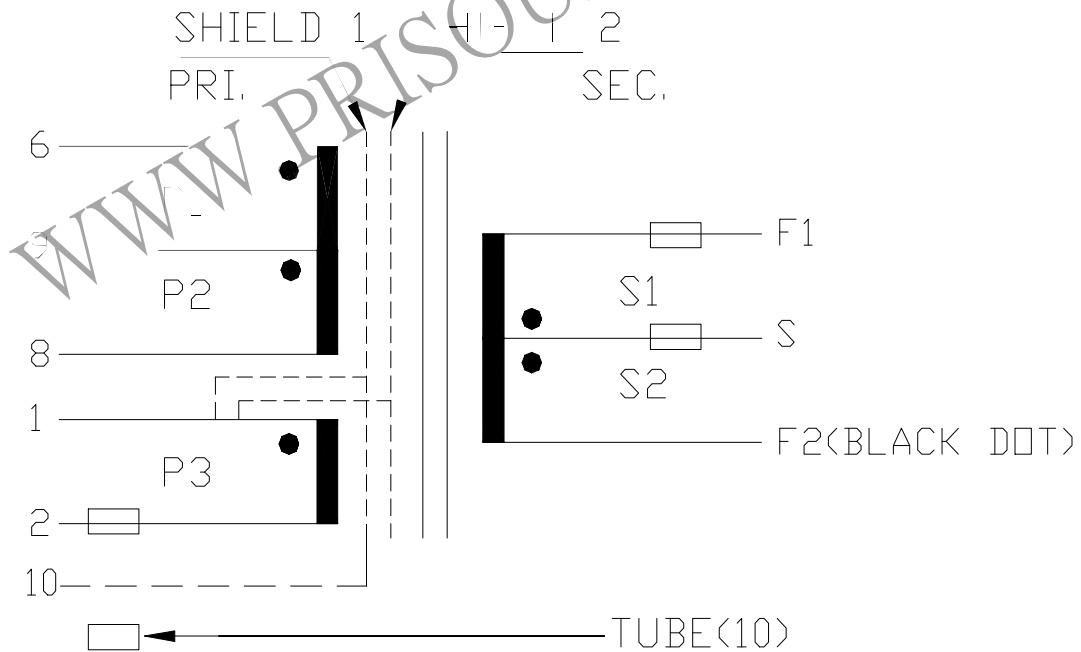
PRI, CORE TO SEC 100 M Ω MIN.
 PRI. TO CORE 100 M Ω MIN.

REPORT BY	CHECK BY	APPROVED BY	CUSTOMER :	DATE
			PART NO : 83P-17002	REV NO.
			ISSUE NO :	PAGE 4 - 2

4. WINDING SEQUENCE:



5. SCHEMATIC:



REPORT BY	CHECK BY	APPROVED BY	CUSTOMER :	DATE
			PART NO : 83P-17002	REV NO.
			ISSUE NO :	PAGE
				4 - 3