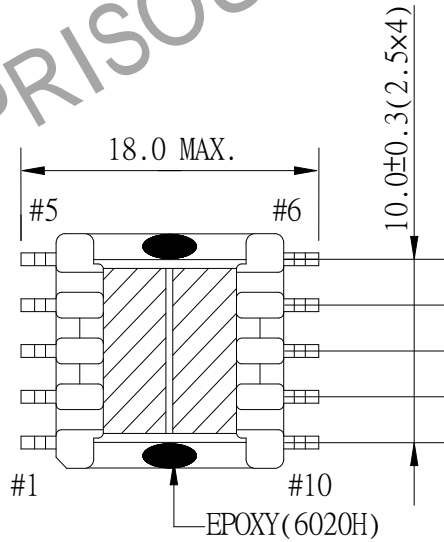
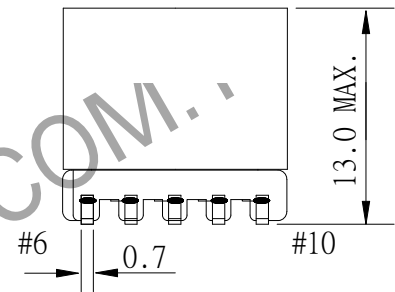
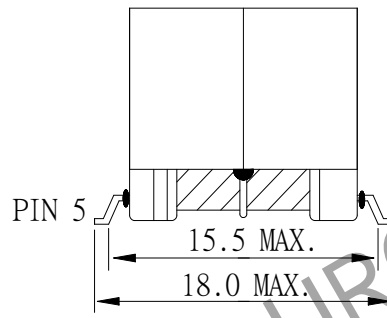
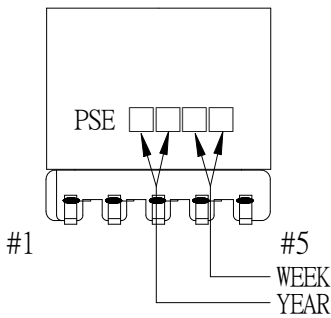
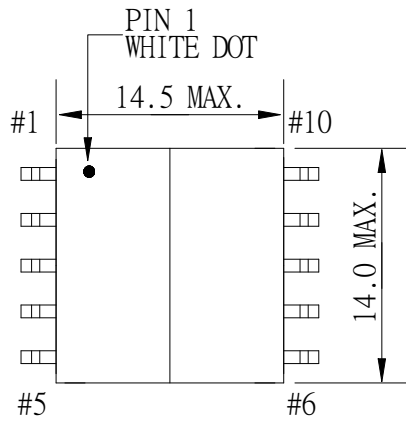


# 1. MECHANICAL & ASSEMBLY :



## NOTE:

1. PIN 1 WITH WHITE DOT
2. ADHESIVE EP-138 FIXED BETWEEN CORE & CORE (TTL:2 POINTS)
3. EPOXY FIXED BETWEEN CORE & CORE (TTL:2 POINTS)

UNIT : m/ m

REPORT BY	CHECK BY	APPROVED BY	CUSTOMER :	DATE	
			PART NO : 83P-16015	REV NO.	
			ISSUE NO :	PAGE	4 - 1

## 2. WINDING CONFIGURATION :

STEP	WINDING	MARGIN TAPE	START-FINISH	COPPER WIRE	TURNS	TUBE	LAYER TAPE	METHOD
1	W2		9 - 8	0.13φ	80	#30	1T	CLOSE
2	W3		7 - 6	0.13φ	80		1T	CLOSE
3	W4		2 - 3	0.13φ	80	#30	1T	CLOSE
4	W5		4 - 5	0.13φ	80		1T	CLOSE
5	W1		1 -	0.18φ	40		2Ts	CLOSE
6	W1'		- 10	0.18φ	40		2Ts	CLOSE

NOTE:

## 3. ELECTRICAL CHARACTERISTICS :

PIN NO.	INDUCTANCE 10 KHz, 0.3Vrms	LEAKAGE INDUCTANCE KHz, Vrms	VOLTAGE RATIO(V) f= 20KHz	DCR MAX AT 25°C
9 - 8	10.24mH±30%		INPUT 1.0 Vrms	2.6 Ω
7 - 6			0.9888Vrms±3%	3.2 Ω
2 - 3			0.9900Vrms±3%	2.6 Ω
4 - 5			0.9903Vrms±3%	3.2 Ω
1 - 10			1.0018Vrms±3%	1.9 Ω

HI-POT TEST : (AT 5 mA, 2 SEC)

W2,W3 TO W4,W5 1500 VAC

W1 TO W2,W3,W4,W5 600 VAC

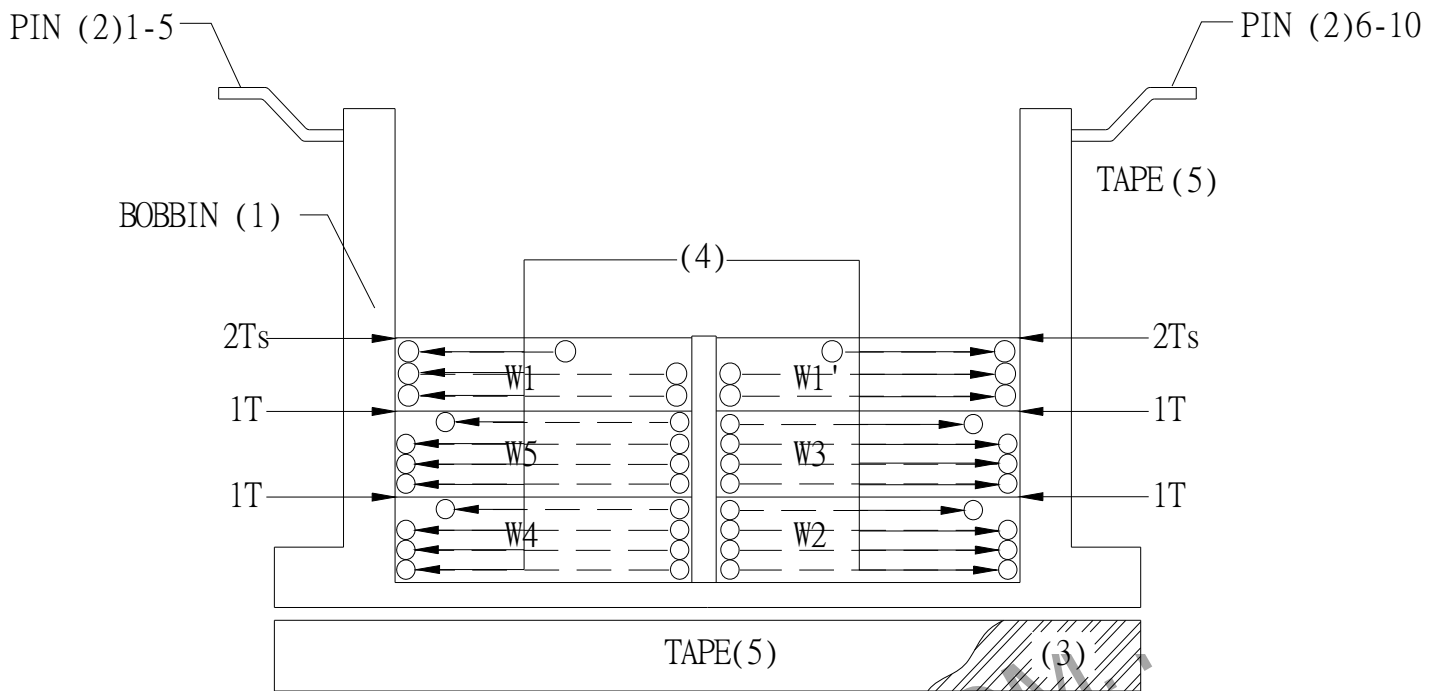
INSULATION RESISTANCE: (AT DC 500V)

W2,W3 TO W4,W5 100 MΩ MIN.

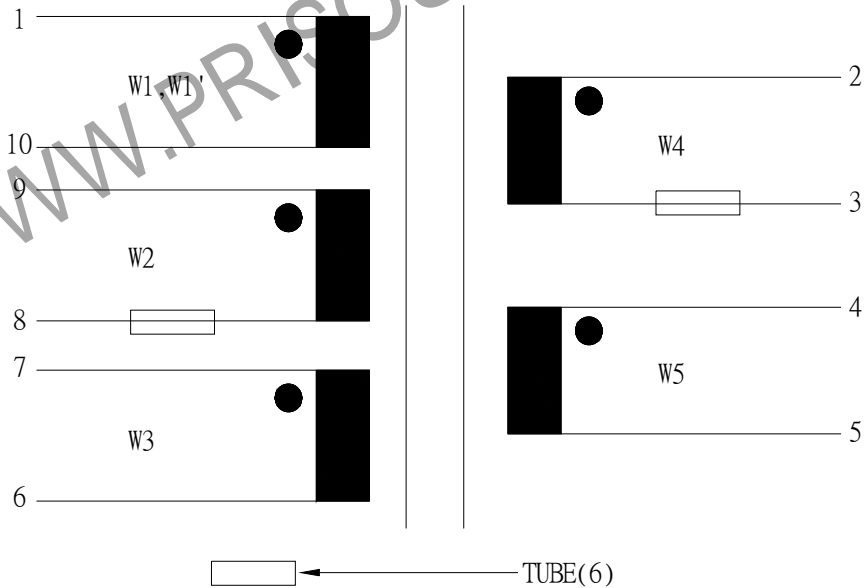
W1 TO W2,W3,W4,W5 100 MΩ MIN.

REPORT BY	CHECK BY	APPROVED BY	CUSTOMER :	DATE
			PART NO : 83P-16015	REV NO.
			ISSUE NO :	PAGE 4 - 2

#### 4. WINDING SEQUENCE:



#### 5. SCHEMATIC:



REPORT	BY	CHECK	APPROVED BY	CUSTOMER :	DATE	
				PART NO : 83P-16015	REV NO.	
				ISSUE NO :	PAGE	4 - 3

## 6. MATERIAL LIST :

NO.	DESCRIPTION	ITEM	MATERIAL	LIST OF SAMPLE	UL NO.	MANUFACTURER
1	BOBBIN	(1)	LCP(E4008) Thickness:0.35mm Min.	✓	E54705	SUMITOMO
2	PIN	(2)	TINNED COPPER WIRE 0.7×0.3	✓		WELL FORE
3	CORE	(3)	FERRITE CORE EP13 TP4	✓		TDG
4	COPPER WIRE	(4)	POLYURETHANE (1UEW) MW75-C TYPYU-130	✓	E197768	HENG YA
5	MYLAR TAPE	(5)	POLYESTER FILM #1318-1 (Y)	✓	E17385	3M
6	TUBE	(6)	TEFLON TUBE TFL	✓	E156256	GREAT HOLDING
7	EPOXY		6020H EP-138	✓ ✓	E229633	WELLS CEMEDINE
8	VARNISH		TVB2180T	✓	E83702	KYOCERA

REPORT BY	CHECK BY	APPROVED BY	CUSTOMER :	DATE	
			PART NO : 83P-16015	REV NO.	
			ISSUE NO :	PAGE	4 - 4