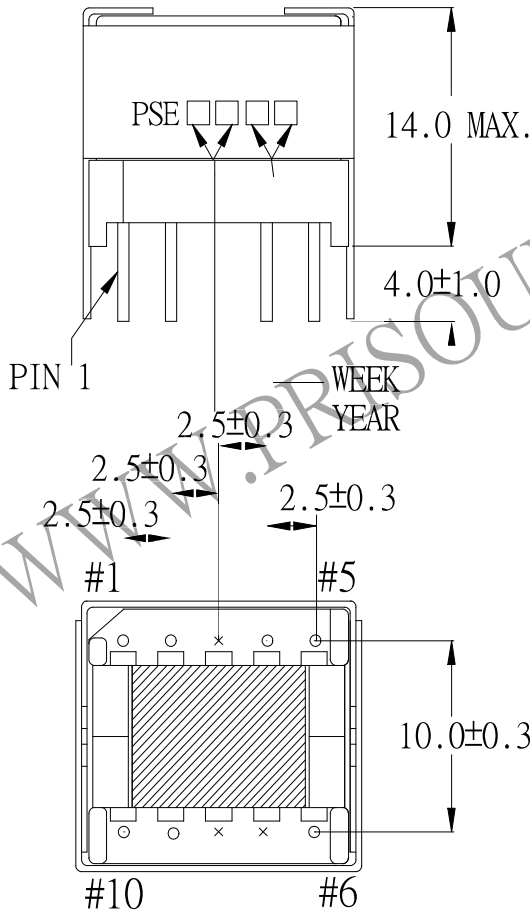
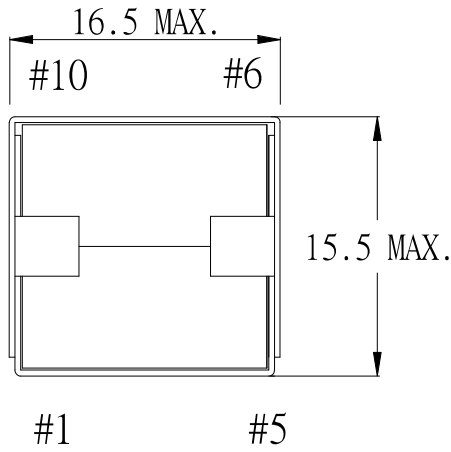


1. MECHANICAL & ASSEMBLY :



NOTE:

1. PIN 3,7,8 NO.
2. PIN 10 WITH WHITE DOT

UNIT : mm

REPORT BY	CHECK BY	APPROVED BY	CUSTOMER :	DATE
			PART NO : 83P-15018	REV NO.
			ISSUE NO:	PAGE
				4 - 1

2. WINDING CONFIGURATION:

STEP	WINDING	MARGIN TAPE	START-FINISH	COPPER WIRE	TURNS	LAYER TAPE	METHOD
1	W1		10 - 9	0.18φ	36	1T	CLOSE
2	W2A		6 - 5	0.18φ	46	1T	CLOSE
3	W2B		5 - 4	0.18φ	46	1T	CLOSE
4	W3		1 - 2	0.18φ	32	2T	CLOSE

NOTE:

3. ELECTRICAL CHARACTERISTICS:

PIN NO.	INDUCTANCE 1.0 KHz, 1.0Vrms	LEAKAGE INDUCTANCE KHz, Vrms	VOLTAGE RATIO(V) f= 20KHz	DCR MAX AT 25°C
10 - 9	95.0uH±20%		INPUT 1 Vrms	0.55 Ω
6 - 5			1.2810 Vrms±3%	0.77 Ω
5 - 4			1.2807 Vrms±3%	0.85 Ω
1 - 2			0.8875 Vrms±3%	0.65 Ω

HI-POT TEST : (AT 1 mA, 2 SEC)

PRI TO PRI 600 VAC

PRI TO CORE 600 VAC

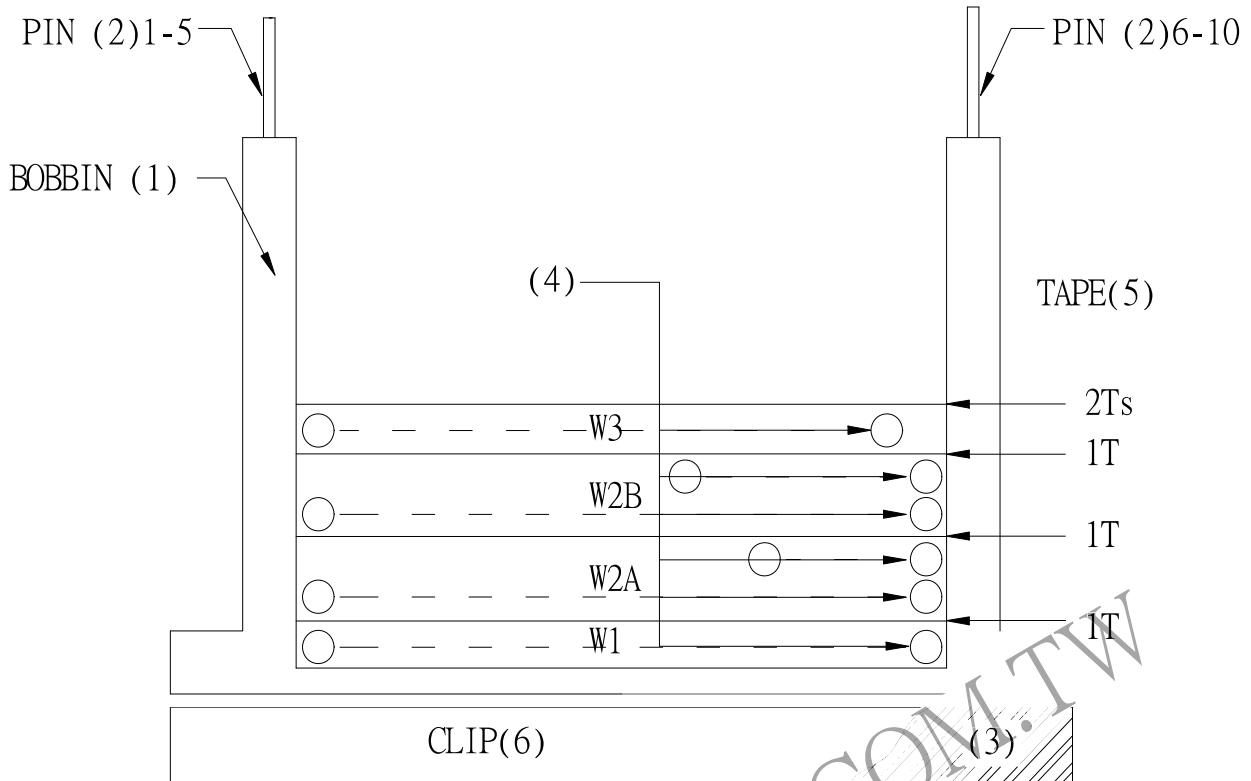
INSULATION RESISTANCE: (AT DC 500V)

PRI TO PRI 100 MΩ MIN.

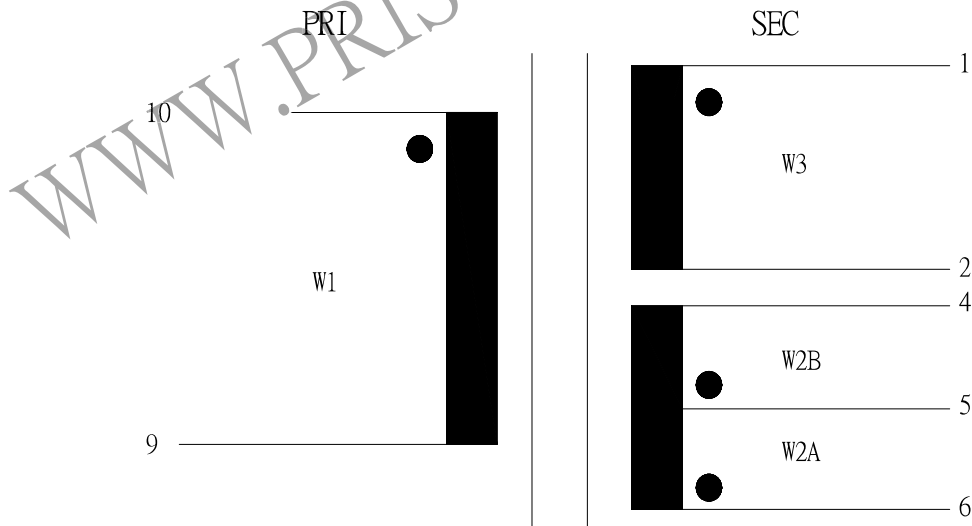
PRI TO CORE 100 MΩ MIN.

REPORT BY	CHECK BY	APPROVED BY	CUSTOMER :	DATE	
			PART NO : 83P-15018	REV NO.	
			ISSUE NO:	PAGE	4 - 2

4. WINDING SEQUENCE:



5. SCHEMATIC:



REPORT BY	CHECK BY	APPROVED BY	CUSTOMER :	DATE	
			PART NO : 83P-15018	REV NO.	
			ISSUE NO:	PAGE	4 - 3