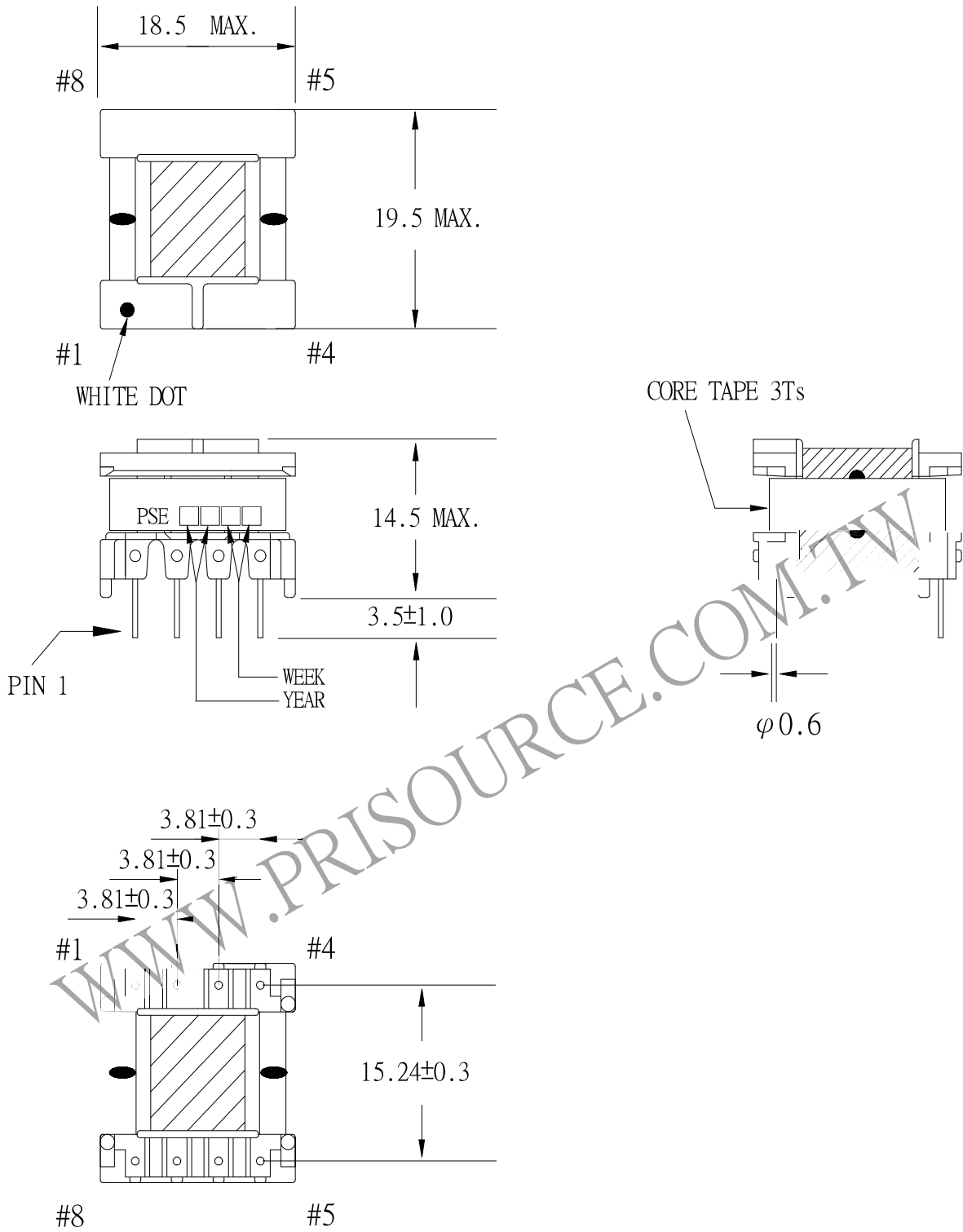


1. MECHANICAL & ASSEMBLY :



UNIT : m/m

REPORT BY	CHECK BY	APPROVED BY	CUSTOMER :	DATE
			PART NO : 68P-13001	REV NO.
			ISSUE NO :	PAGE
				4 - 1

2. WINDING CONFIGURATION:

STEP	WINDING	MARGIN TAPE	START-FINISH	COPPER WIRE	TURNS	LAYER TAPE	TUBE	METHOD
1	N1		2 - 1	0.13φ	101	3Ts	AWG#30	CLOSE
2	N2		6 - 5	TEX-E 0.45φ	6	2Ts	AWG#21	SPACE

NOTE :

3. ELECTRICAL CHARACTERISTICS:

PIN NO.	INDUCTANCE 100.0 KHz, 1.0Vrms	LEAKAGE INDUCTANCE 100 KHz, 1.0Vrms	VOLTAGE RATIO(V) F=20KHz INPUT 1Vrms	DCR MAX. AT 25°C
2 - 1	1.847 mH±12%	73.9 uH MAX.		4.1 Ω
5 - 6		SHORT	0.0590Vrms ±3.0%	26.0 mΩ

HI-POT TEST : (AT 1 mA, 2 SEC.)

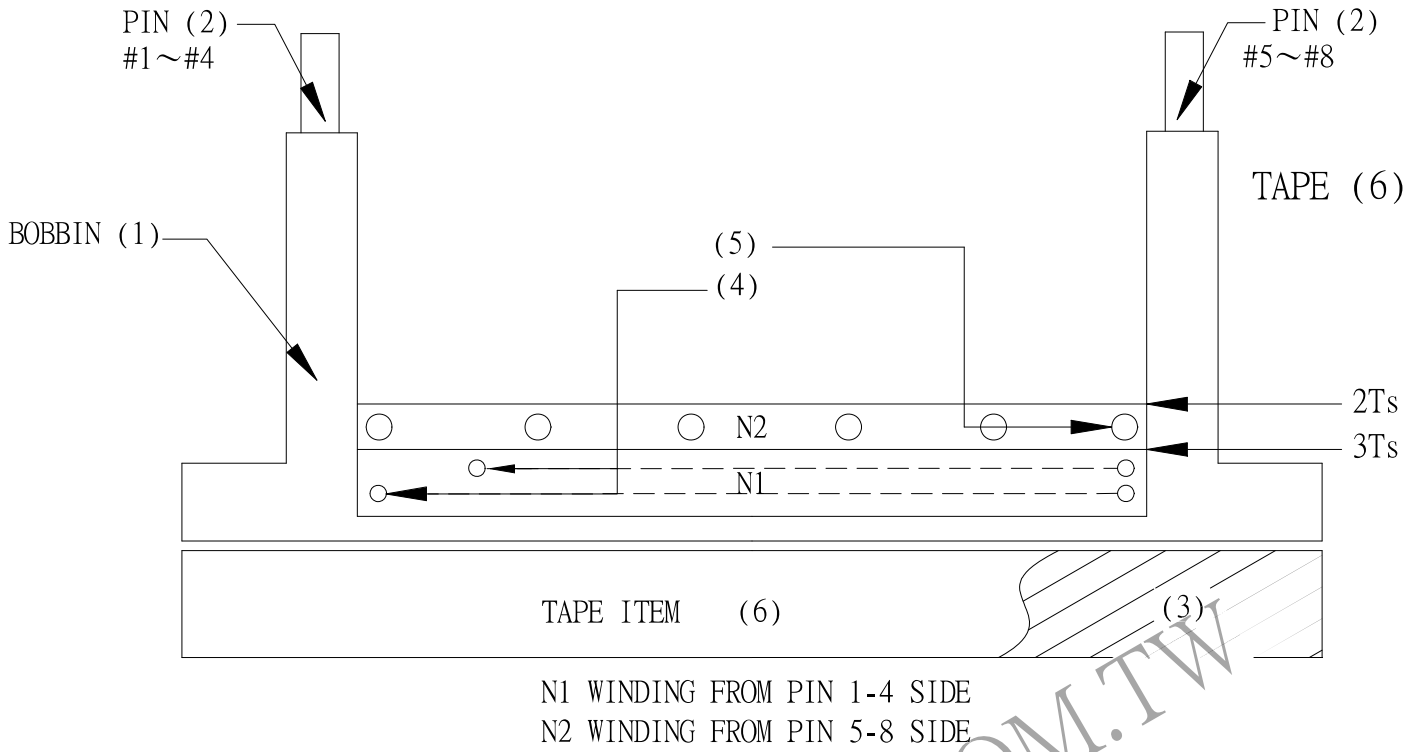
PRI. TO SEC. 3000 VAC

INSULATION RESISTANCE: (AT DC 500V)

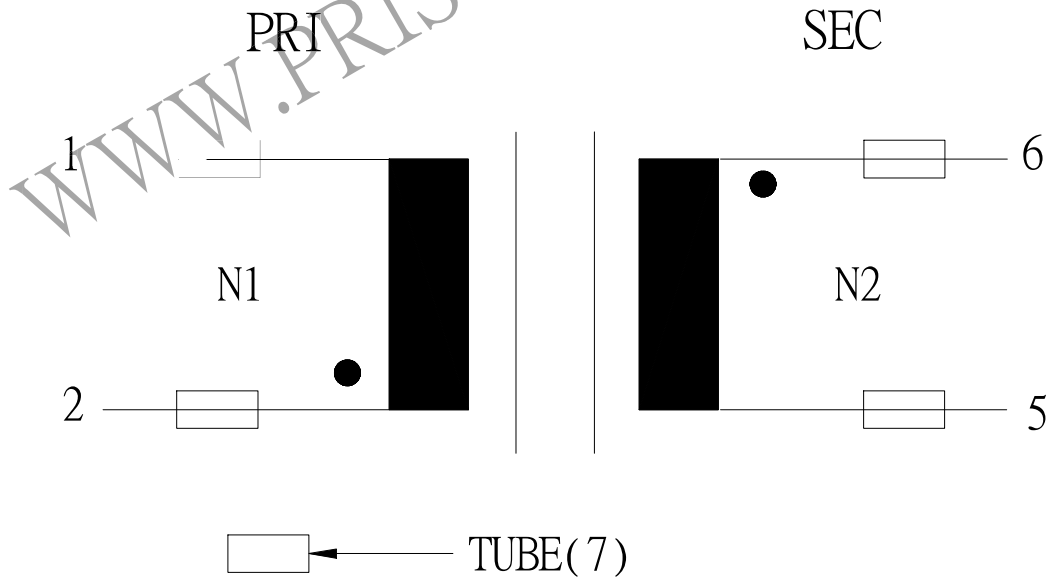
PRI TO SEC 100 MΩ MIN.

REPORT BY	CHECK BY	APPROVED BY	CUSTOMER :	DATE
			PART NO : 68P-13001	REV NO.
			ISSUE NO :	PAGE 4 - 2

4. WINDING SEQUENCE:



5. SCHEMATIC:



REPORT BY	CHECK BY	APPROVED BY	CUSTOMER :	DATE	
			PART NO : 68P-13001	REV NO.	
			ISSUE NO :	PAGE	4 - 3