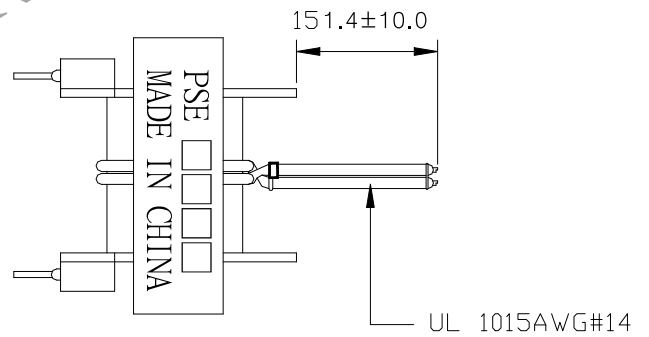
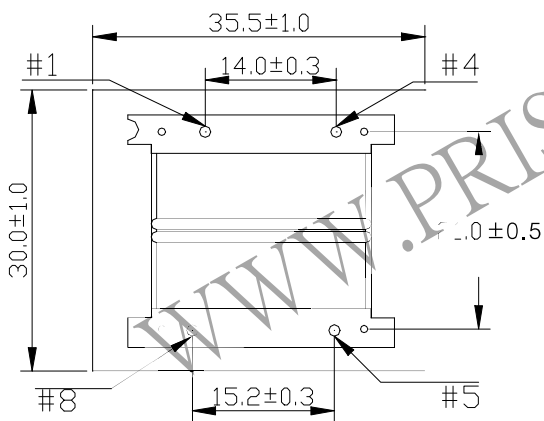
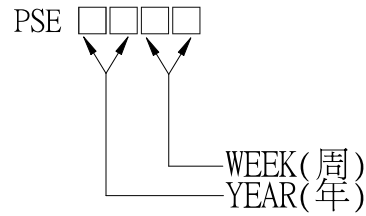
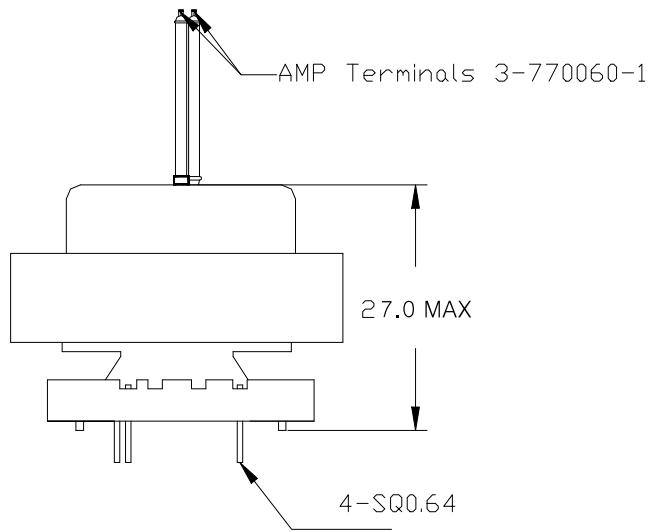


1. MECHANICAL & ASSEMBLY :



NOTE:
1. PIN 2.3.6.7 NO

UNIT : m/ m

REPORT BY	CHECK BY	APPROVED BY	CUSTOMER :	DATE
			PART NO : 65P-16002	REV NO.
			ISSUE NO :	PAGE
				4 - 1

2. WINDING CONFIGURATION :

STEP	WINDING	MARGIN TAPE	START-FINISH	COPPER WIRE	TURNS	LAYER TAPE	METHOD
1	P1		4 - 1	0.23φ	530	2Ts	CLOSE
2	S1		頂部	UL 1015 AWG14	2		CLOSE

NOTE:

3. ELECTRICAL CHARACTERISTICS :

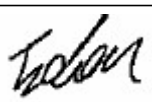
PIN NO	INDUCTANCE 60Hz, 1.0Vrms	LOAD CURRENT	LOAD VOLTAGE	DCR(MAX) AT 25°C
4 - 1	762H MIN			12.0 Ω±10%

HI-POT TEST : (AT 3 mA, 2 SEC.)

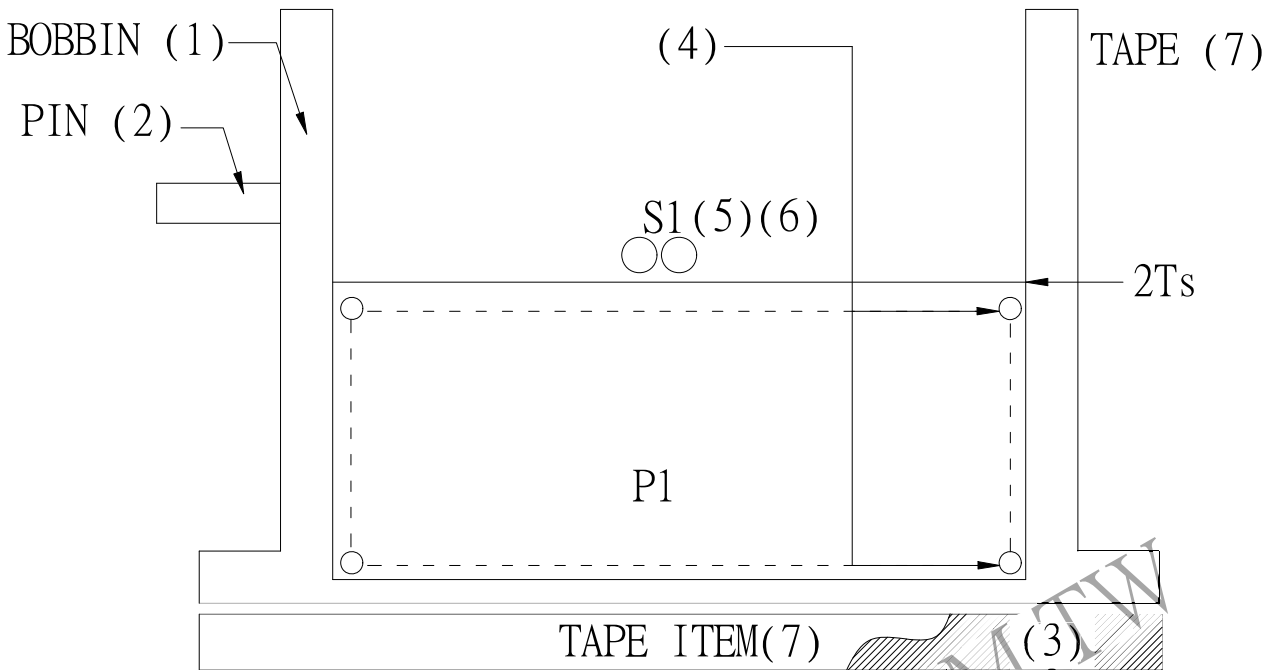
PRI TO SEC 1500 VAC
 PRI TO CORE 1500 VAC
 SEC TO CORE 1500 VAC

INSULATION TEST : (AT DC500V)

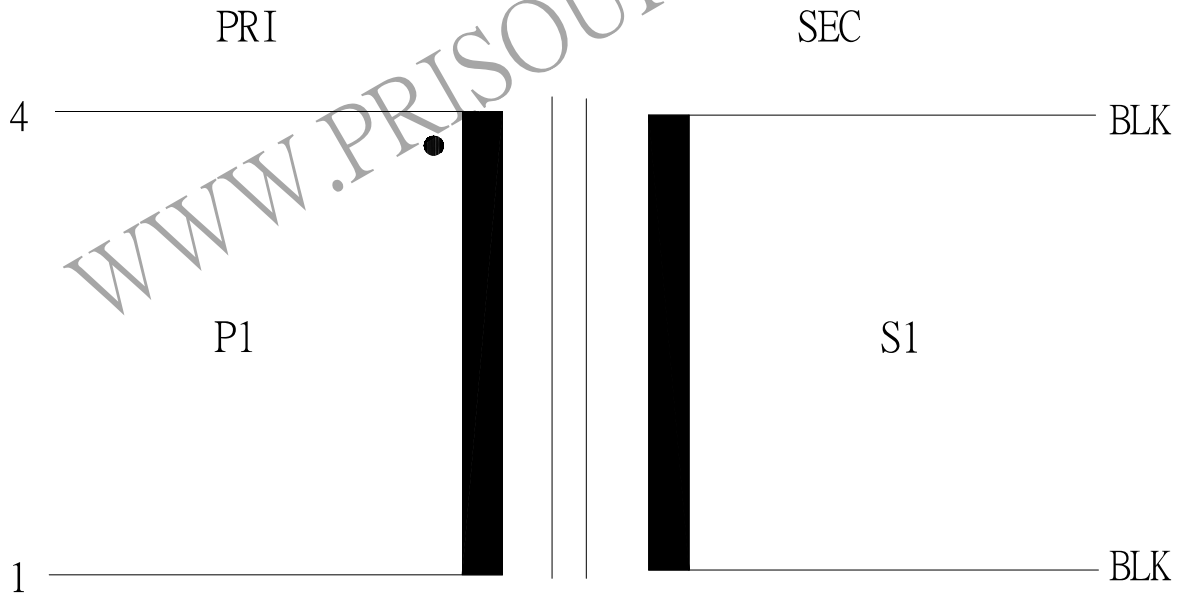
PRI TO SEC 100 MΩ MIN.
 PRI TO CORE 100 MΩ MIN.
 SEC TO CORE 100 MΩ MIN.

REPORT BY	CHECK BY	APPROVED BY	CUSTOMER :	DATE
			PART NO : 65P-16002	REV NO.
			ISSUE NO :	PAGE
				4 - 2

4. WINDING SEQUENCE:



5. SCHEMATIC:



REPORT BY	CHECK BY	APPROVED BY	CUSTOMER :	DATE	
			PART NO : 65P-16002	REV NO.	
			ISSUE NO :	PAGE	4 - 3