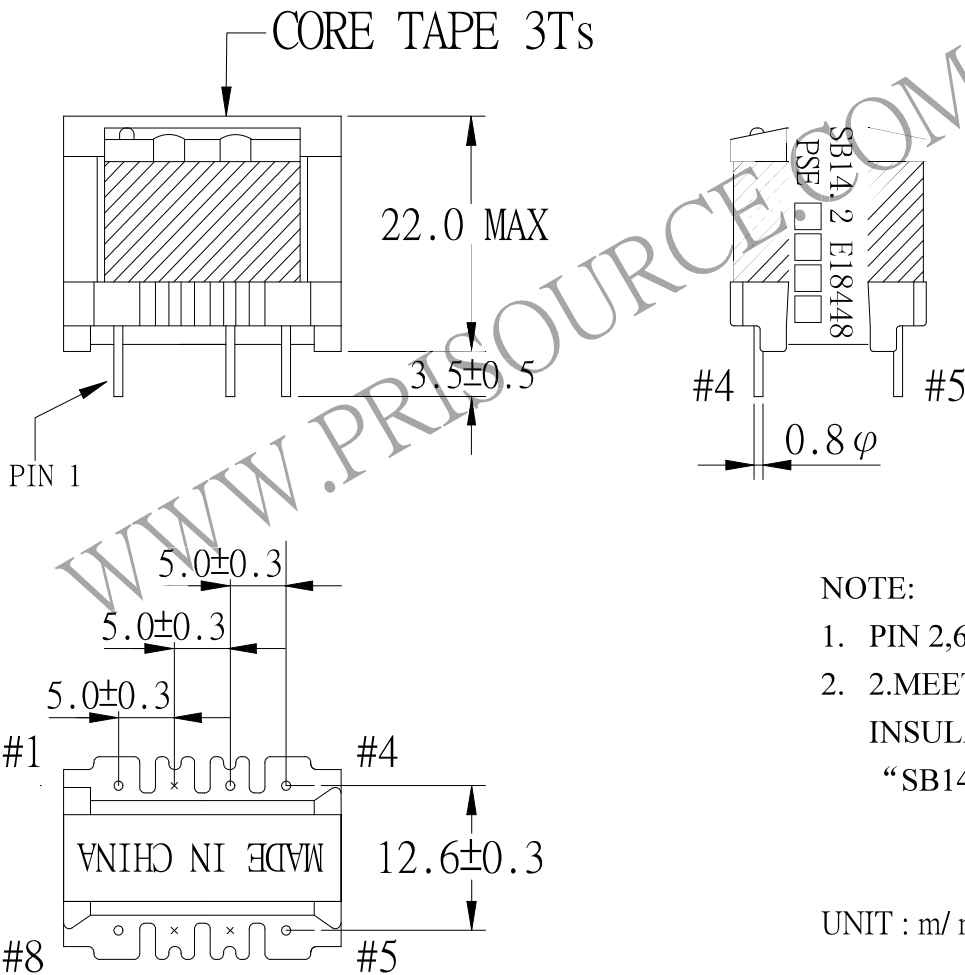
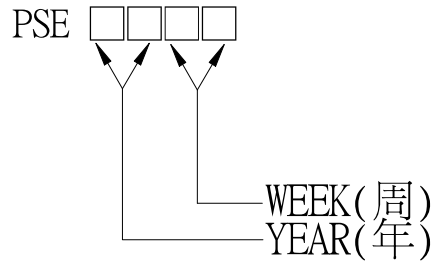
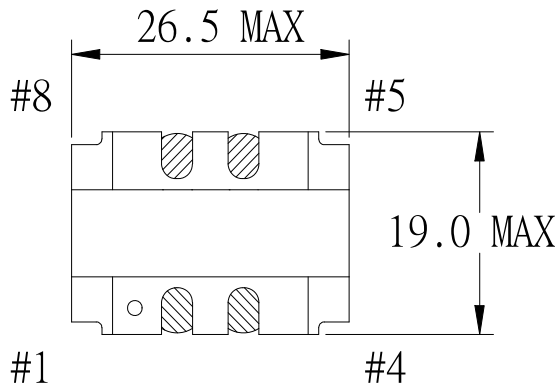


1. MECHANICAL & ASSEMBLY :



NOTE:

1. PIN 2,6,7 NO.
2. 2.MEET CLASS B INSULATION SYSREM "SB14.2"E18448

UNIT : m/ m

REPORT BY	CHECK BY	APPROVED BY	CUSTOMER :	DATE
			PART NO : 65P-16001	REV NO.
			ISSUE NO :	PAGE
				4 - 1

## 2. WINDING CONFIGURATION :

STEP	WINDING	MARGIN TAPE	START-FINISH	COPPER WIRE	TURNS	LAYER TAPE	METHOD
1	P1		1 - 4	0.05 $\phi$	7500	2Ts	CLOSE
2	S2		5 - 8	0.10 $\phi$	905	2Ts	CLOSE

NOTE:

## 3. ELECTRICAL CHARACTERISTICS :

PIN NO	DCR(MAX) AT 25°C	LOAD CURRENT 60Hz, 120Vrms	LOAD VOLTAGE	LOAD VOLTAGE AC 12mA
INPUT 1-4	3.50 k $\Omega$	4.5mA MAX	120V, 60Hz	120V, 60Hz
OUTPUT 5-8	135.0 $\Omega$		14.06V $\pm$ 5.0%	12.0V $\pm$ 5.0%

HI-POT TEST : (AT 1 mA, 2 SEC.)

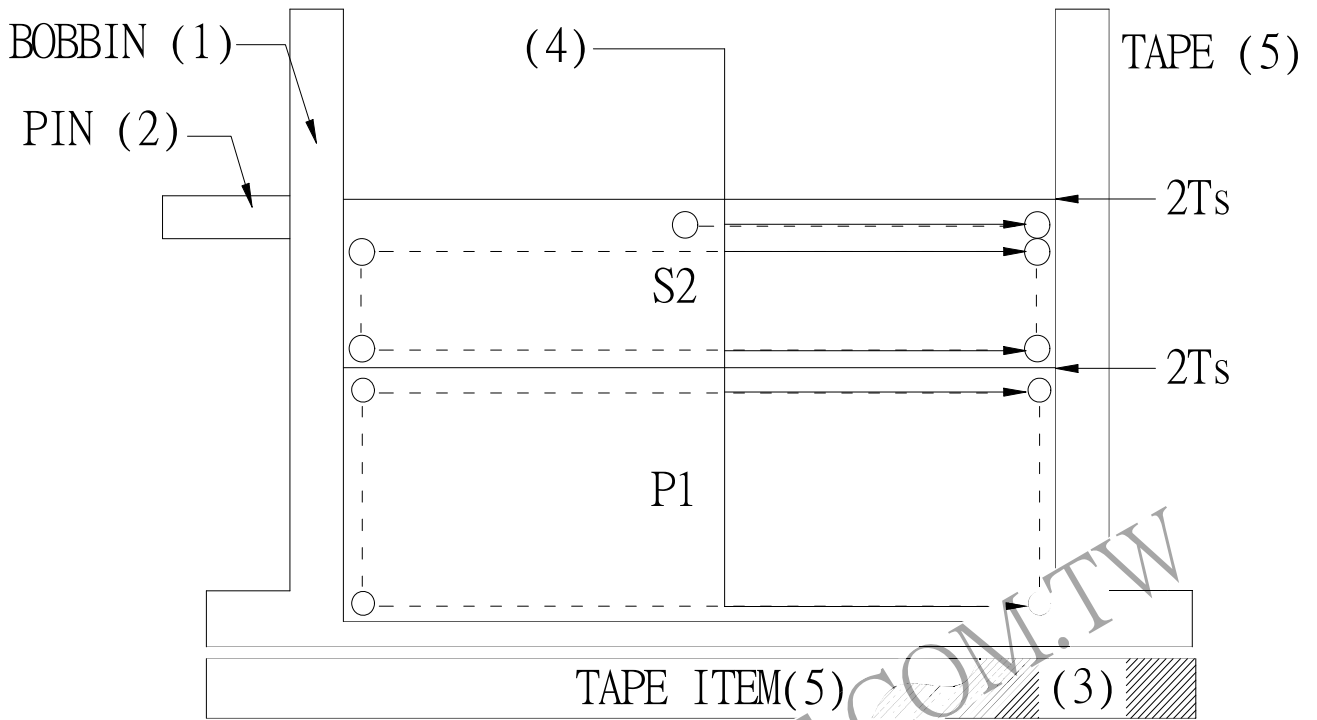
PRI TO SEC 1800 VAC  
 PRI TO CORE 1800 VAC  
 SEC TO CORE 600 VAC

INSULATION TEST : (AT DC500V)

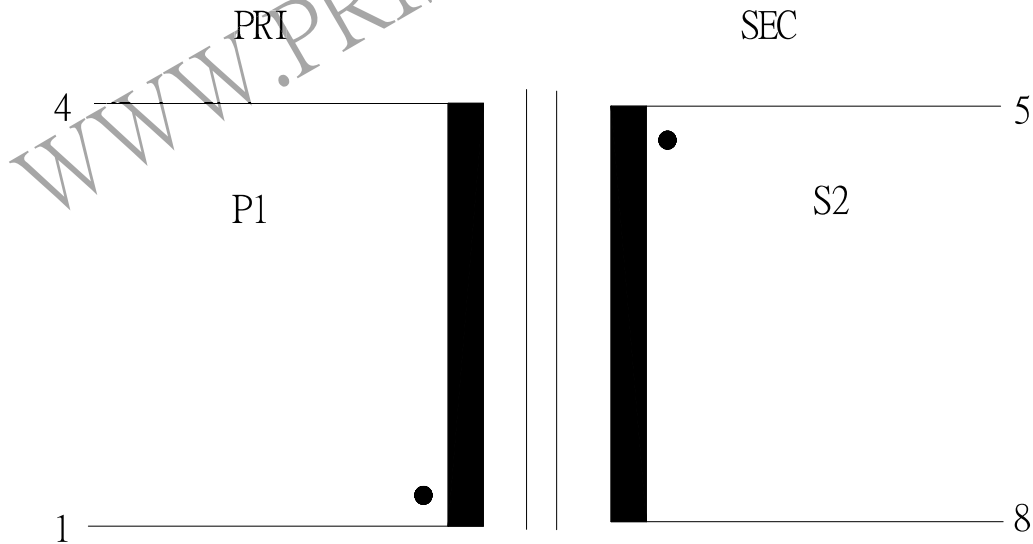
PRI TO SEC 100 M $\Omega$  MIN.  
 PRI TO CORE 100 M $\Omega$  MIN.  
 SEC TO CORE 100 M $\Omega$  MIN.

REPORT BY	CHECK BY	APPROVED BY	CUSTOMER :	DATE
			PART NO : 65P-16001	REV NO.
			ISSUE NO :	PAGE 4 - 2

4. WINDING SEQUENCE:



5. SCHEMATIC:



REPORT BY	CHECK BY	APPROVED BY	CUSTOMER :	DATE	
			PART NO : 65P-16001	REV NO.	
			ISSUE NO :	PAGE	4 - 3