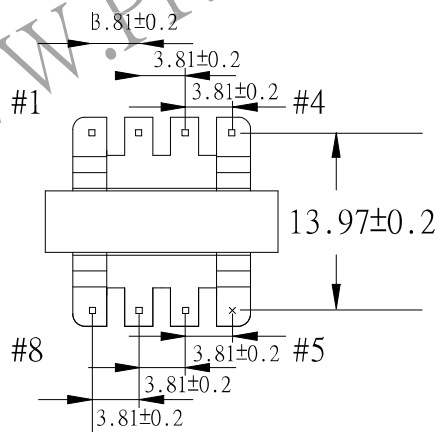
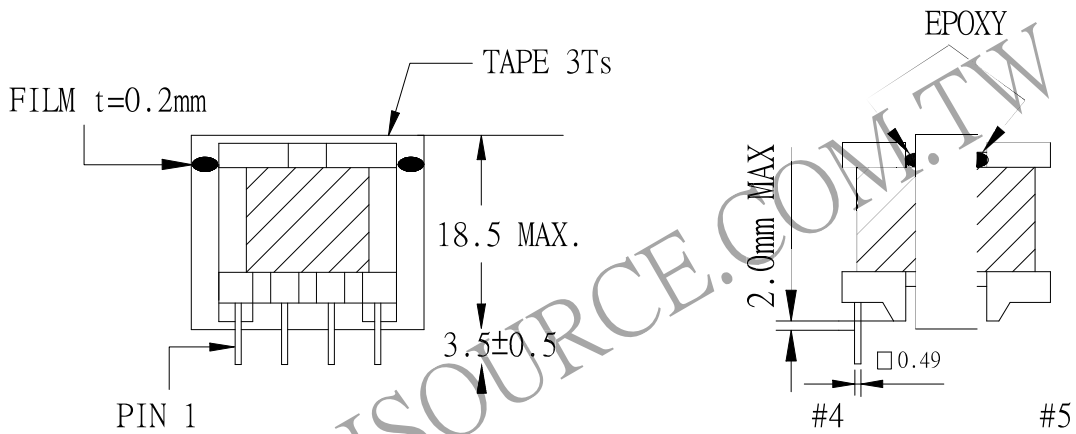
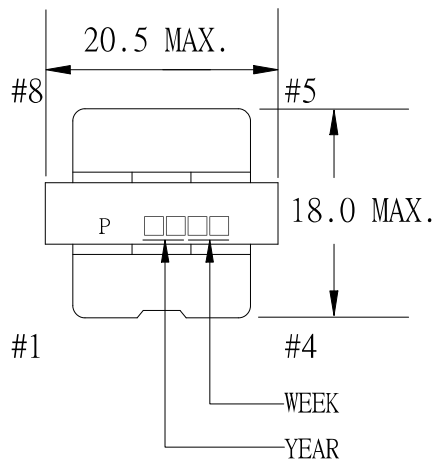


1. MECHANICAL & ASSEMBLY:



NOTE:

1. EPOXY FIXED BETWEEN CORE & CORE (TTL:4 POINTS)
2. EPOXY FIXED BETWEEN BOBBIN & CORE (ONE POINT)
3. PIN 5 NO.
4. SOLDER POINT CAN BE OVER STAND OFF 2.0 mm MAX

UNIT : m/ m

REPORT BY	CHECK BY	APPROVED BY	CUSTOMER :	DATE
			PART NO : 54P-14138	REV NO.
			ISSUE NO :	PAGE
				4 - 1

2. WINDING CONFIGURATION:

STEP	WINDING	MARGIN TAPE	START-FINISH	COPPER WIRE	TURNS	LAYER TAPE	METHOD
1	A1		2 - A	0.18 ϕ	80	1T	CLOSE
2	A3		4 - 3	0.18 ϕ ×2	17	3Ts	CLOSE
3	B1		7 - 8	TEX-E0.37 ϕ ×2	7	3Ts	CLOSE
4	A2		A' - 1	0.18 ϕ	80	2Ts	CLOSE
5			A,A'互絞			2Ts	

NOTE:

3. ELECTRICAL CHARACTERISTICS:

PIN NO.	INDUCTANCE 1.0 KHz, 1.0Vrms	LEAKAGE INDUCTANCE mVrms	KHz,	VOLTAGE RATIO(V) f= 20KHz	DCR MAX AT 25°C
2 - 1	1.651mH MIN			INPVT 1Vrms	4.4 Ω
4 - 3				0.1070Vrms±4%	220.0 m Ω
7 - 8				0.0434Vrms±7%	25.0 m Ω

HI-POT TEST : (AT 0.5 mA, 2 SEC.)

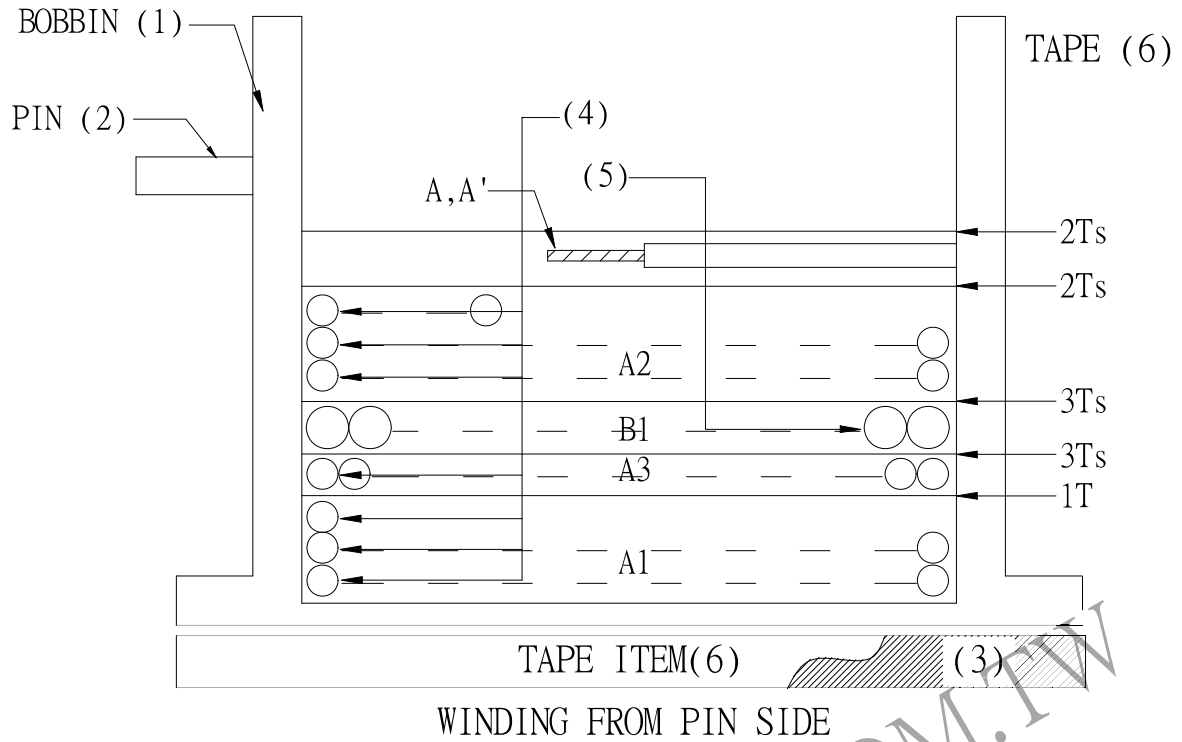
PRI TO SEC 3000VAC

INSULATION RESISTANCE: (AT DC 500V)

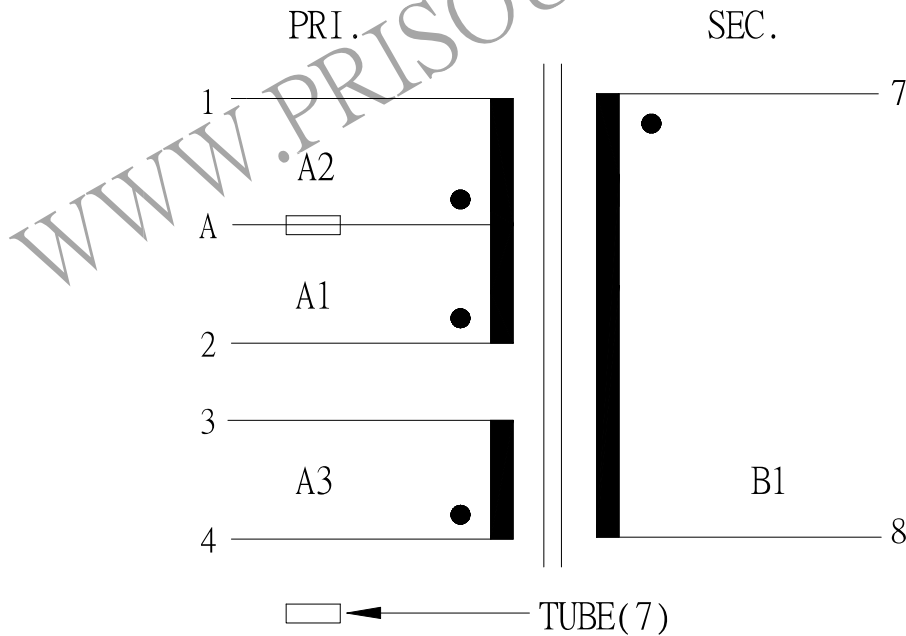
PRI TO SEC 100 M Ω MIN.

REPORT BY	CHECK BY	APPROVED BY	CUSTOMER :	DATE	
			PART NO : 54P-14138	REV NO. NO.	
			ISSUE NO :	PAGE	4 - 2

4. WINDING SEQUENCE:



5. SCHEMATIC:



REPORT BY	CHECK BY	APPROVED BY	CUSTOMER :	DATE
			PART NO : 54P-14138	REV NO. NO.
			ISSUE NO :	PAGE
				4 - 3