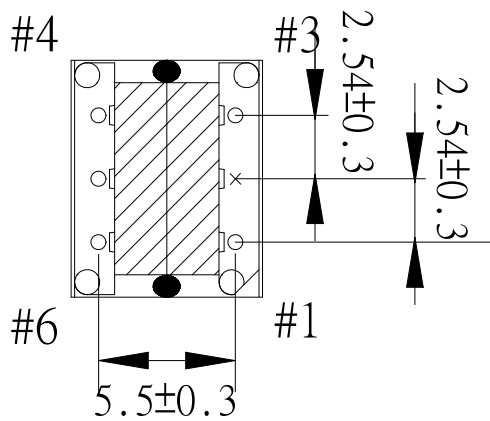
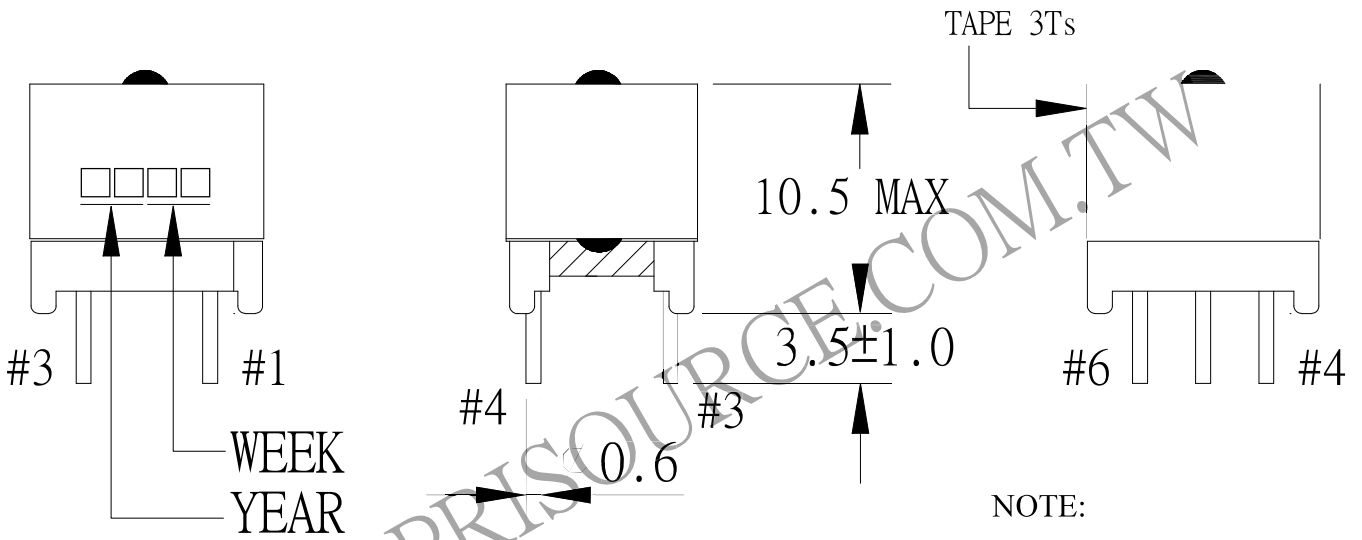
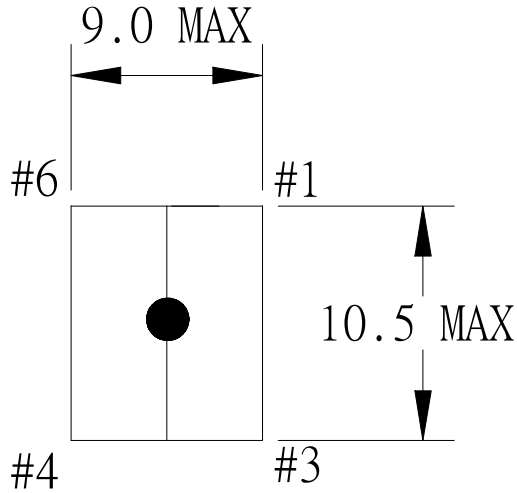


1. MECHANICAL & ASSEMBLY :



NOTE:

1. PIN 2 NO
2. EPOXY FIXED BETWEEN CORE & CORE (TTL:3 POINTS)
3. ADHESIVE EP-138 FIXED BETWEEN CORE & CORE (TTL:2 POINTS)

UNIT : m/m

REPORT BY	CHECK BY	APPROVED BY	CUSTOMER :	DATE	
			PART NO : 54P-13110	REV NO.	
			ISSUE NO :	PAGE	4 - 1

## 2. WINDING CONFIGURATION:

STEP	WINDING	MARGIN TAPE	START-FINISH	COPPER WIRE	TURNS	LAYER TAPE	METHOD
1	N1		3 - 1	0.13φ	60	2Ts	CLOSE
2	N2		4 - 5	0.08φ	100	2Ts	BIFILAR, CLOSE
6	N3		5 - 6	0.08φ	100		

NOTE:

## 3. ELECTRICAL CHARACTERISTICS:

PIN NO.	INDUCTANCE 1.0KHz, 1.0Vrms	LEAKAGE INDUCTANCE KHz, Vrms	VOLTAGE RATIO(V) F= 20 KHz	DCR MAX. AT 25°C
3 - 1	3.86mH ~ 7.59mH		INPUT 1 Vrms	2.0 Ω
5 - 6			1.658 Vrms±3.0%	10.0 Ω
4 - 5			1.658 Vrms±3.0%	10.0 Ω

HI-POT TEST :( AT 0.5 mA, 2 SEC. )

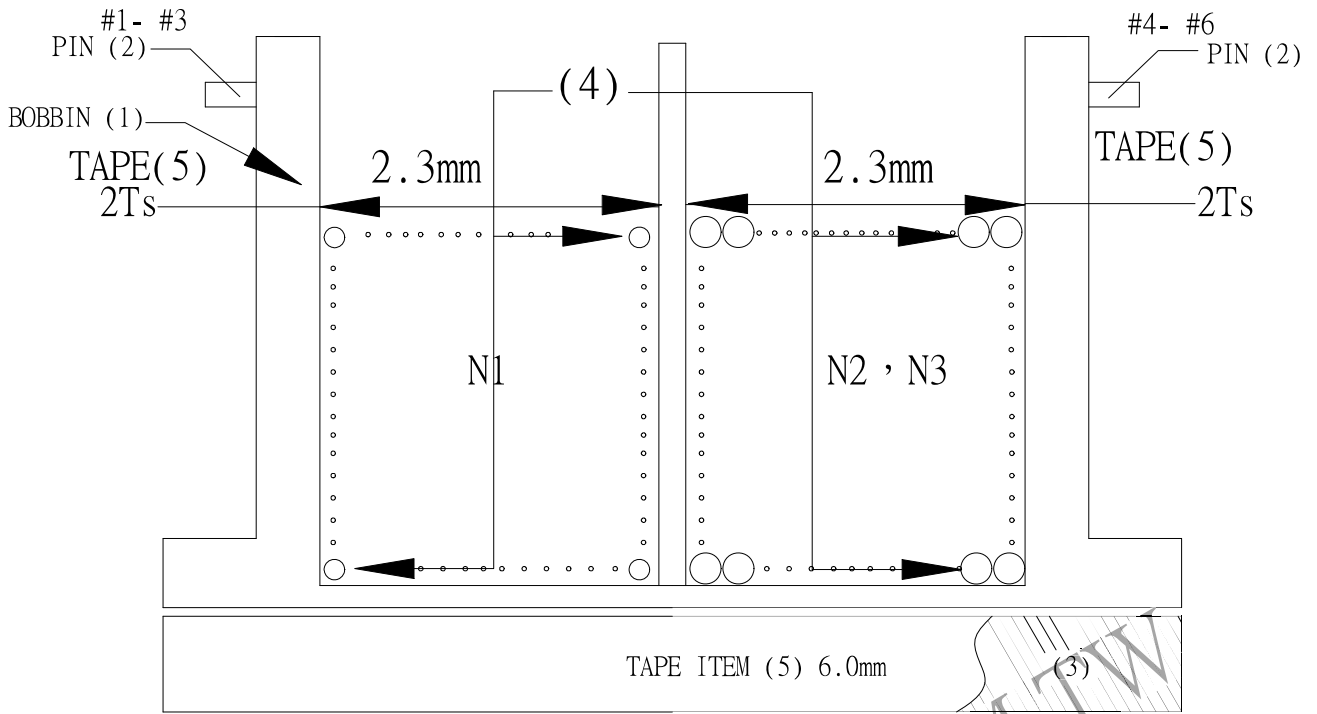
PRI. TO SEC. 2400 VAC

INSULATION RESISTANCE:(AT DC 500V)

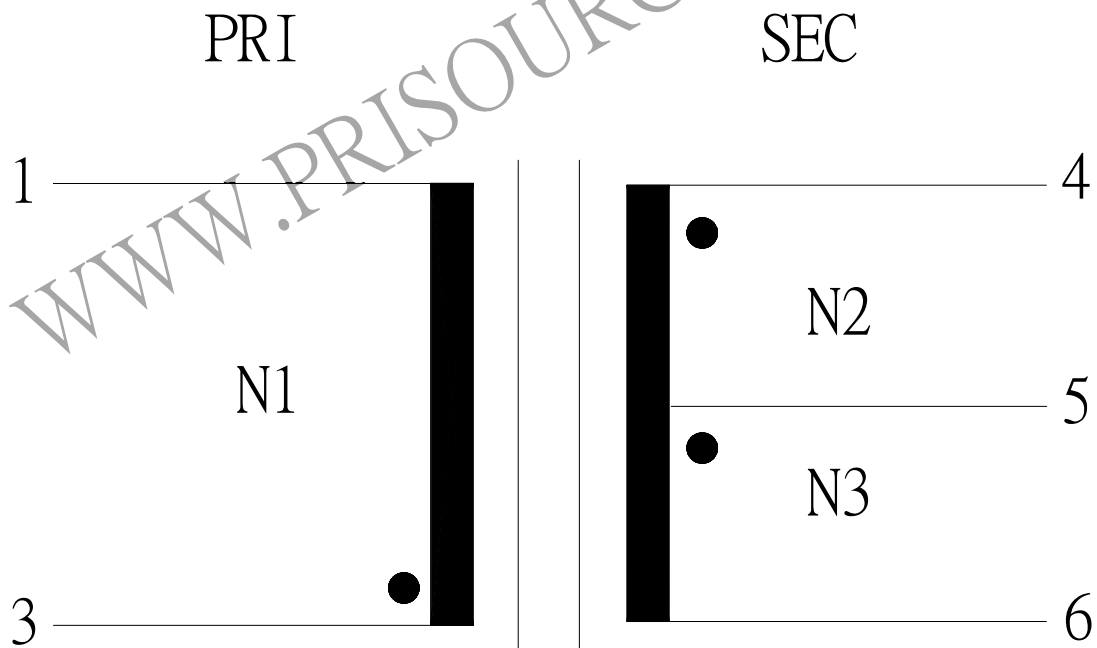
PRI. TO SEC. 100 MΩ MIN.

REPORT BY	CHECK BY	APPROVED BY	CUSTOMER :	DATE
			PART NO : 54P-13110	REV NO.
			ISSUE NO :	PAGE 4 - 2

#### 4. WINDING SEQUENCE:



#### 5. SCHEMATIC:



REPORT	BY	CHECK	BY	APPROVED	BY	CUSTOMER :	DATE	
						PART NO : 54P-13110	REV NO.	
						ISSUE NO :	PAGE	4 - 3