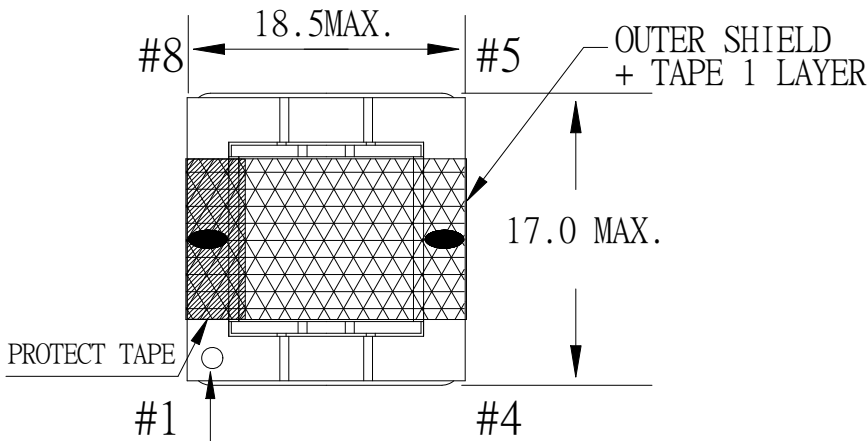
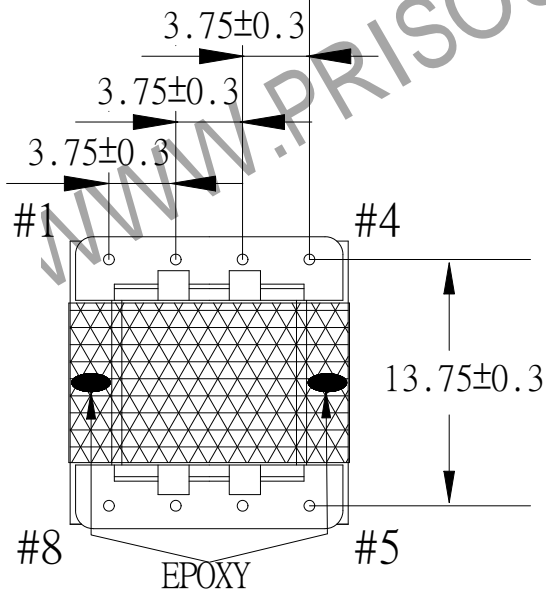
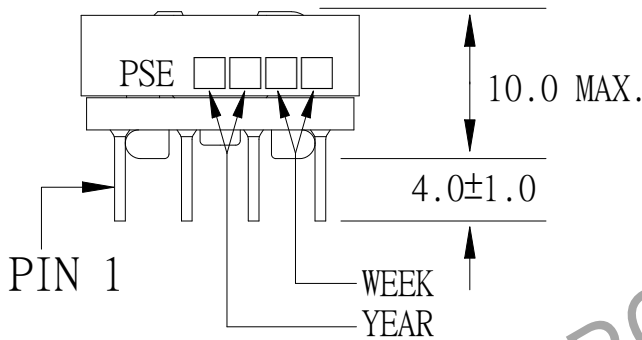


1. MECHANICAL & ASSEMBLY :



PIN 1
WITH WHITE DOT



NOTE:

1. EPOXY FIXED BETWEEN CORE & CORE (TTL:4 POINTS).
2. WRAP OUTER SHIELD(t0.05x7mm) 1T ,THEN,COVERD WITH ONE LAYER TAPE
3. OUTER SHIELD INSULATED BY ONE LAYERS TAPE AT BOTTOM OF BOBBIN
4. OUTER SHIELD CONNECTED TO PIN 3 WITH 0.13mm WIRE
5. PIN 1 WITH WHITE DOT.

UNIT : m / m

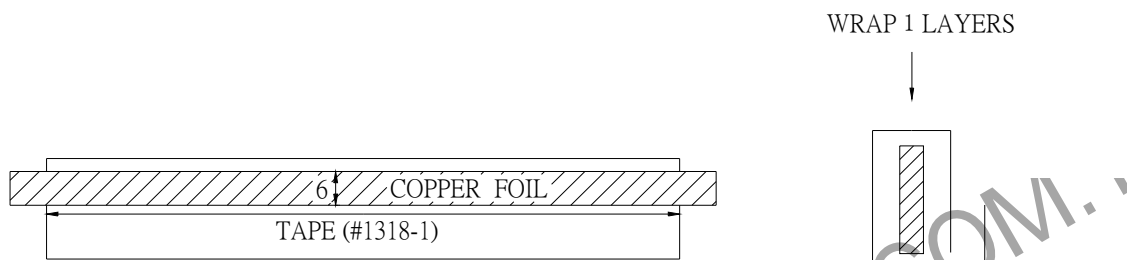
REPORT BY	CHECK BY	APPROVED BY	CUSTOMER :	DATE	
			PART NO : 84P-12003	REV NO.	
			ISSUE NO :	PAGE	4 - 1

2. WINDING CONFIGURATION :

STEP	WINDING	MARGIN TAPE	START-FINISH	COPPER WIRE	TURNS	LAYER	TUBE	METHOD
1	N1		2 - 1	0.13 ϕ	150	1T		CLOSE
2	N2		8 - 7	TEX-E0.20 ϕ	22	1T		BIFILAR ,CLOSE
3	N3		6 - 5	TEX-E0.20 ϕ	16			
4	N4		4 - 3	0.13 ϕ	21	2Ts		CLOSE
5	SHIELD		3-COPPER FOIL	t0.05 x7	1	1T		

NOTE:

0.13mm WIRE PIN 3 OUTER SHIELD INSULATED BY ONE LAYERS TAPE AT BOTTOM OF BOBBIN



3. ELECTRICAL CHARACTERISTICS:

PIN NO.	INDUCTANCE 50 KHz, 0.1Vrms	LEAKAGE INDUCTANCE 50 KHz, 0.1Vrms	VOLTAGE RATIO(V) F= 20KHz	DCR MAX. AT 25°C
2 - 1	1.9mH \pm 20%	65.0uH MAX	INPUT 1 Vrms	5.0 Ω MAX.
8 - 7		SHORT	0.1466Vrms \pm 4.0%	0.4 Ω MAX.
6 - 5		SHORT	0.1070Vrms \pm 4.0%	0.3 Ω MAX.
4 - 3			0.1421Vrms \pm 4.0%	1.0 Ω MAX.

HI-POT TEST :(AT 1 mA , 2SEC.)

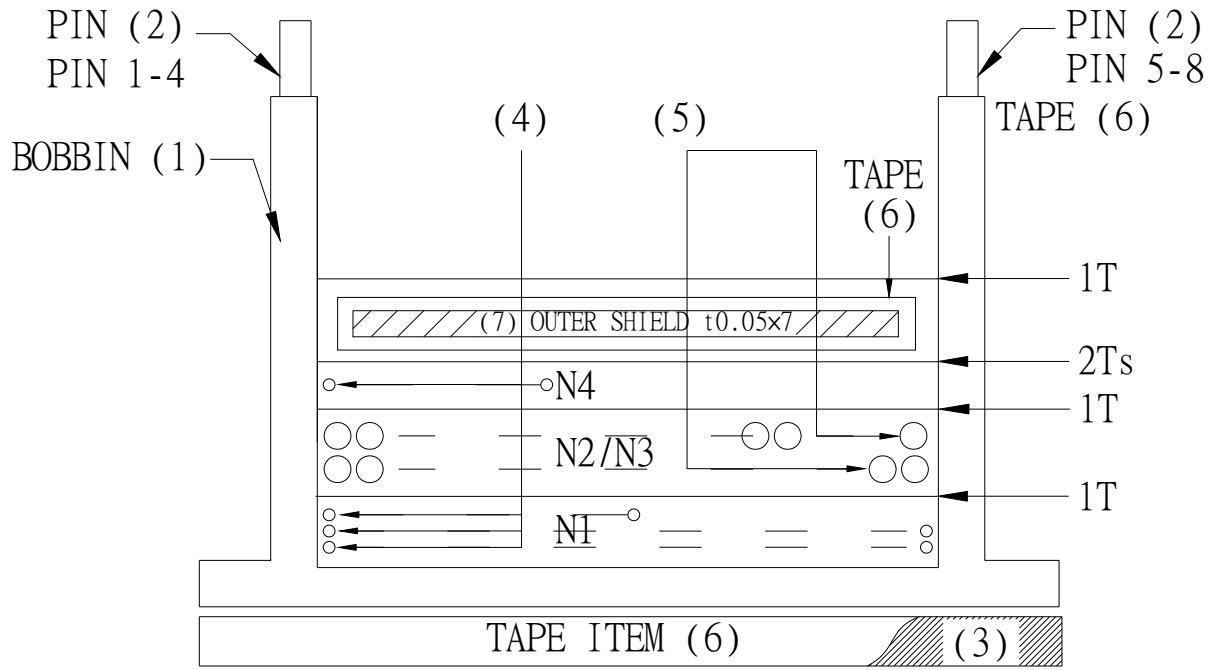
PRI.	TO	SEC.	2500 VAC
PRI.	TO	CORE	500 VAC
SEC.	TO	CORE	500 VAC

INSULATION RESISTANCE:(AT DC 500V)

PRI.	TO	SEC.	100 M Ω MIN.
PRI.	TO	CORE.	100 M Ω MIN.
SEC.	TO	CORE.	100 M Ω MIN.

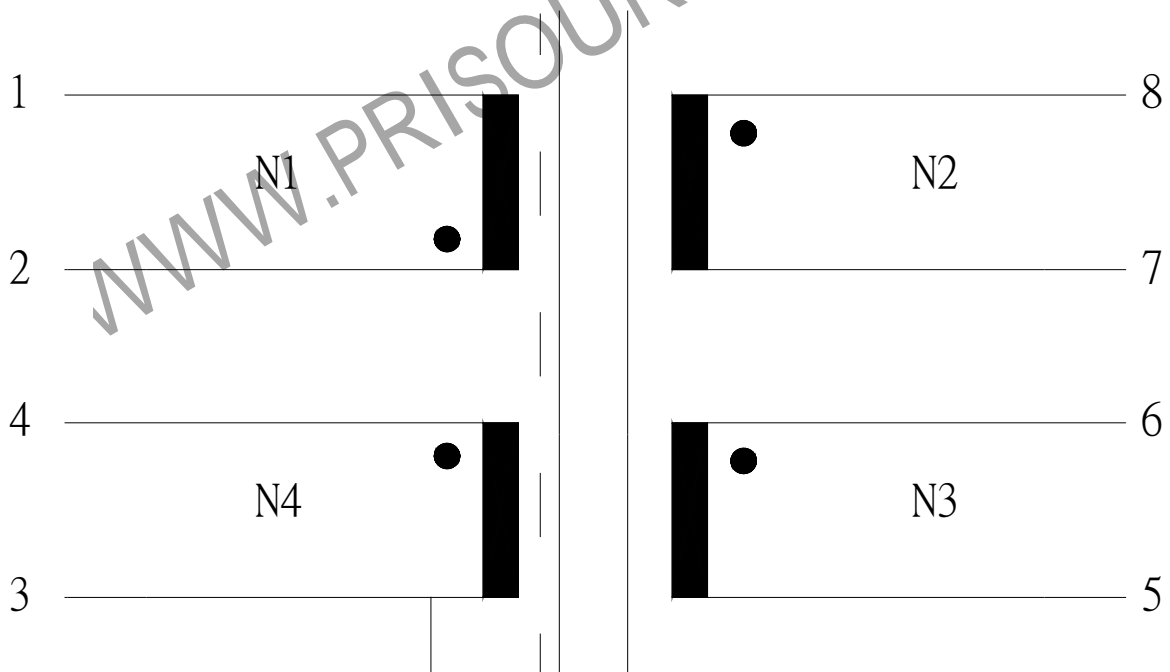
REPORT BY	CHECK BY	APPROVED BY	CUSTOMER :	DATE	
			PART NO : 84P-12003	REV NO.	
			ISSUE NO :	PAGE	4 - 2

4. WINDING SEQUENCE:



N1, N4 WINDING FROM PIN1-4 SIDE
 N2, N3 WINDING FROM PIN5-8 SIDE

5. SCHEMATIC:



REPORT BY	CHECK BY	APPROVED BY	CUSTOMER :	DATE	
			PART NO : 84P-12003	REV NO.	
			ISSUE NO :	PAGE	4 - 3

6. MATERIAL LIST :

NO.	DESCRIPTION	ITEM	MATERIAL	LIST OF SAMPLE	UL NO.	MANUFACTURER
1	BOBBIN	(1)	PHENOLIC (PM-9630) Thickness:0.65mm normal.	✓	E41429	SUMITOMO
2	PIN	(2)	TINNED C.P WIRE Φ 0.6mm	✓		WELL FORE
3	CORE	(3)	FERRITE CORE EFD15 TP4	✓		TDG
4	COPPER WIRE	(4)	POLYURETHANE(2UEW) TYPU-130 MW75-C	✓	E197768	HENG YA
5	TRIPLE WIRE	(5)	TEX-E	✓	E206440	FURUKAWA
6	MYLAR TAPE	(6)	POLYESTER FILM #1318-1 (Y)	✓	E17385	3M
7	SHIELD	(7)	COPPER FOIL t0.05x7mm	✓		TORAY
8	PROTECT TAPE		COMPOSITE FILM #44-A	✓	E17385	3M
9	EPOXY		6020H	✓	E229633	WELLS
10	VARNISH		WP-2952F-2G		E72979	HITACHI

REPORT BY	CHECK BY	APPROVED BY	CUSTOMER :	DATE
			PART NO : 84P-12003	REV NO.
			ISSUE NO :	PAGE 4 - 4