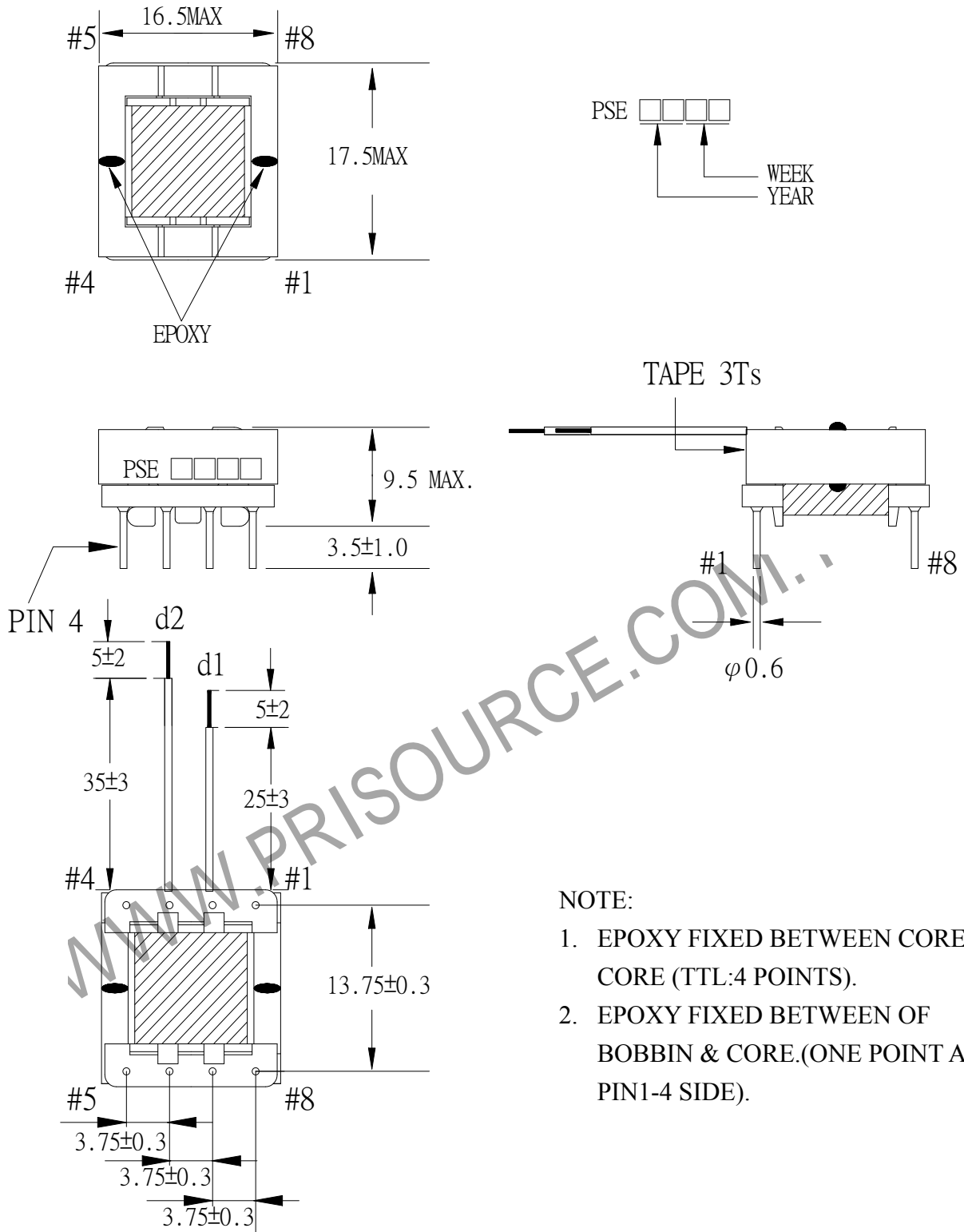


# 1. MECHANICAL & ASSEMBLY :



**NOTE:**

1. EPOXY FIXED BETWEEN CORE & CORE (TTL:4 POINTS).
2. EPOXY FIXED BETWEEN OF BOBBIN & CORE.(ONE POINT AT PIN1-4 SIDE).

UNIT :mm

REPORT BY	CHECK BY	APPROVED BY	CUSTOMER :	DATE	
			PART NO : 83P-17006	REV NO.	
			ISSUE NO :	PAGE	4 - 1

## 2. WINDING CONFIGURATION :

STEP	WINDING	MARGIN TAPE	START-FINISH	COPPER WIRE	TURNS	LAYER TAPE	TUBE	METHOD
1	L1		5 - 8	0.23 $\phi$ ×2	34	2Ts		CLOSE
2	L2		d1 - d2	TEX-E 0.3 $\phi$	34	2Ts		CLOSE

NOTE:

## 3. ELECTRICAL CHARACTERISTICS :

PIN NO.	INDUCTANCE 1 KHz, 0.3 Vrms	LEAKAGE INDUCTANCE 50 KHz, 0.1Vrms	VOLTAGE RATIO(V) F= 20KHz INPUT 1 Vrms	DCR MAX. AT 25°C
5 - 8	185.0uH±10%		0.9903 Vrms±3%	187.5m $\Omega$
d1 - d2				0.35 $\Omega$

HI-POT TEST :( AT 1 mA , 1SEC. )

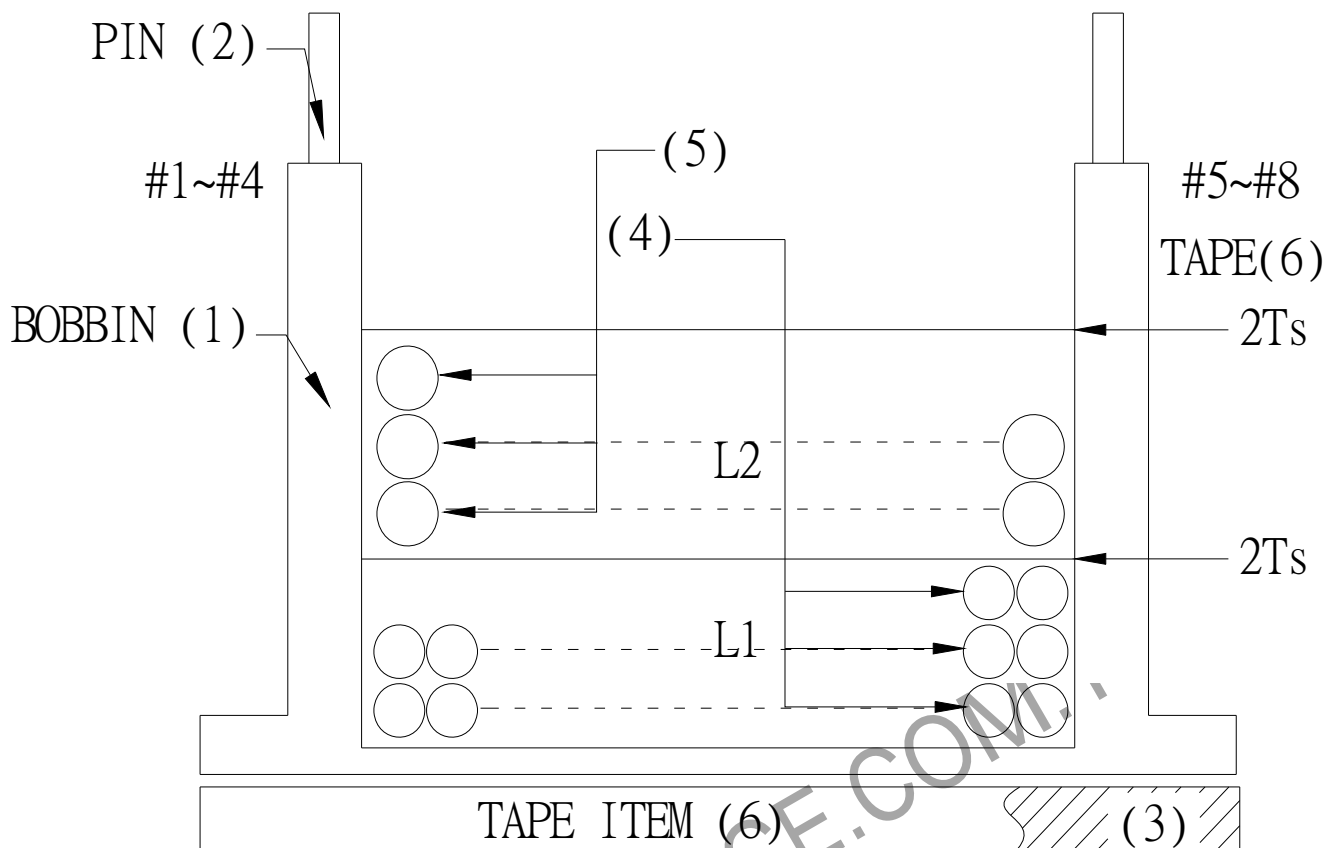
N1. TO N2 3600 VAC

INSULATION RESISTANCE:(AT DC 500V)

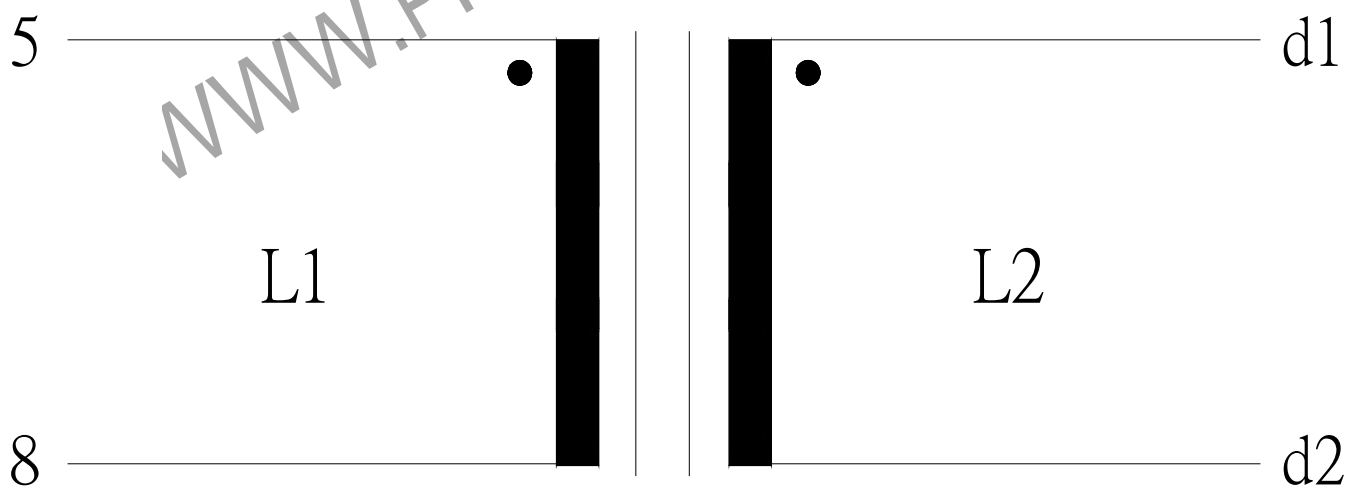
N1. TO N2 . 100 M $\Omega$  MIN.

REPORT BY	CHECK BY	APPROVED BY	CUSTOMER :	DATE
			PART NO : 83P-17006	REV NO.
			ISSUE NO :	PAGE 4 - 2

4. WINDING SEQUENCE:



5. SCHEMATIC:



REPORT BY	CHECK BY	APPROVED BY	CUSTOMER :	DATE	
			PART NO : 83P-17006	REV NO.	
			ISSUE NO :	PAGE	4 - 3

6. MATERIAL LIST :

NO.	DESCRIPTION	ITEM	MATERIAL	LIST OF SAMPLE	UL NO.	MANUFACTURER
1	BOBBIN	(1)	PHENOLIC (PM9630) Thickness:0.50mm Min.	✓	E41429	SUMITOMO
2	PIN	(2)	TINNED C.P WIRE Φ0.6mm	✓		WELL FORE
3	CORE	(3)	FERRITE CORE EFD15 TP4	✓		TDG
4	COPPER WIRE	(4)	POLYURETHANE(1UEWF) MW79C TYA1-U155	✓	E197768	HENG YA
5	TRIPLE WIRE	(5)	TEX-E	✓	E206440	FURUKAWA
6	MYLAR TAPE	(6)	POLYESTER FILM #1318Y-1	✓	E17385	3M
7	EPOXY		6020H	✓	E229633	WELLS
8	VARNISH		TVB2180T		E83702	KYOCERA

REPORT BY	CHECK BY	APPROVED BY	CUSTOMER :	DATE
			PART NO : 83P-17006	REV NO.
			ISSUE NO :	PAGE 4 - 4