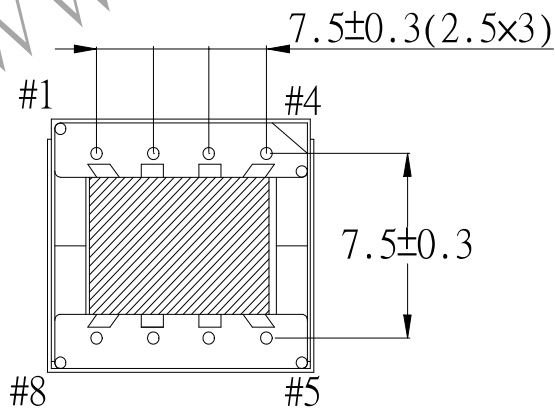
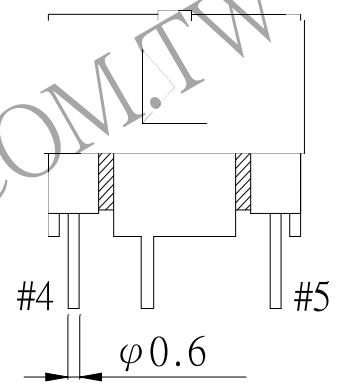
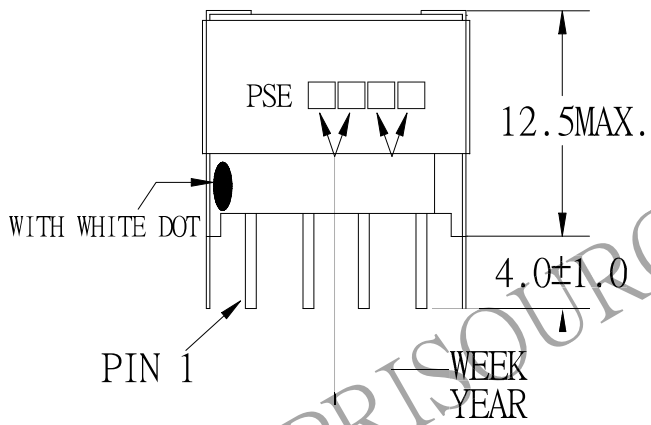
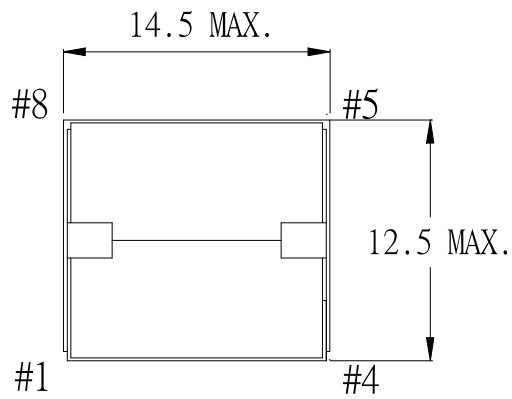


1. MECHANICAL & ASSEMBLY :



NOTE:
PIN 1 WITH WHITE DOT

UNIT:m/m

REPORT BY	CHECK BY	APPROVED BY	CUSTOMER :	DATE	
			PART NO : 83P-16008	REV NO.	
			ISSUE NO :	PAGE	4 - 1

2. WINDING CONFIGURATION :

STEP	WINDING	MARGIN TAPE	START-FINISH	COPPER WIRE	TURNS	LAYER TAPE	TUBE	METHOD
1	P1		1 - 2	φ0.18	56	2Ts		CLOSE
2	S1		8 - 7	φ0.18	19	2Ts		CLOSE
3	S2		6 - 5	φ0.18	19	2Ts		CLOSE

NOTE:

3. ELECTRICAL CHARACTERISTICS :

PIN NO.	INDUCTANCE 1.0KHz, 1.0Vrms	LEAKAGE INDUCTANCE KHz, Vrms	VOLTAGE RATIO(V) F= 20KHz	DCR MAX. AT 25°C
1 - 2	200.0uH ±15%		INPUT 1Vrms	0.80 Ω
8 - 7			0.3403 Vrms±4.0%	0.35 Ω
6 - 5			0.3406 Vrms±4.0%	0.35 Ω

HI-POT TEST :(AT 5mA , 2 SEC.)

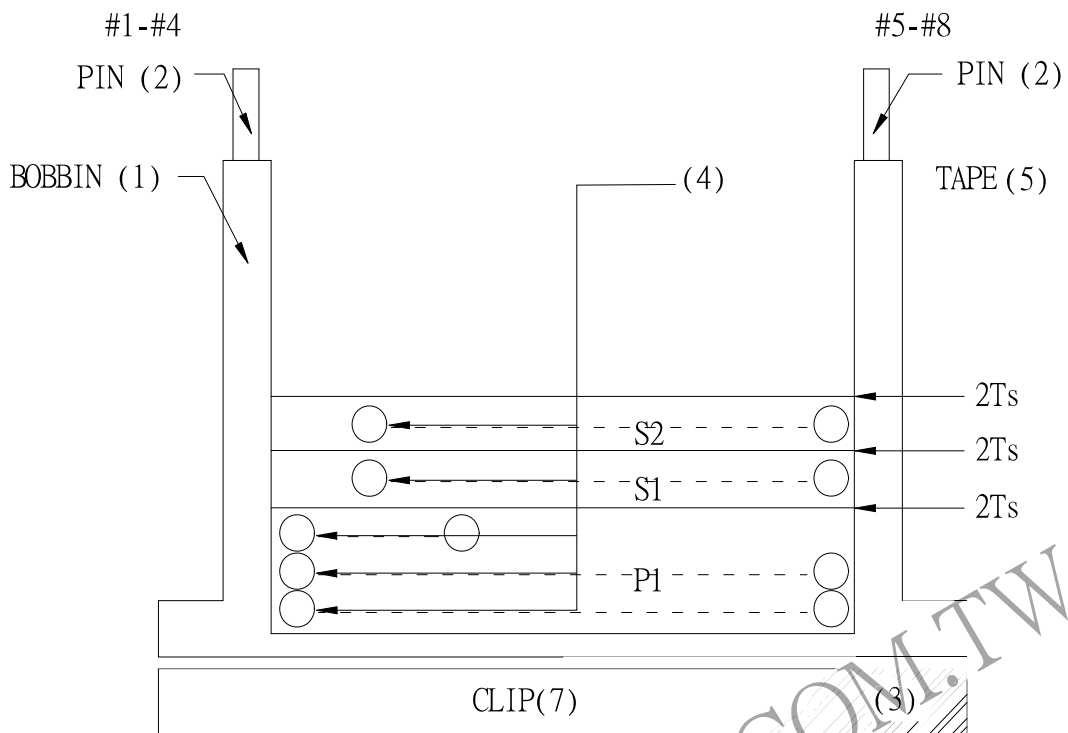
PRI. TO SEC. 1200 VAC
 PRI. TO CORE. 1200 VAC
 SEC. TO CORE. 1200 VAC

INSULATION RESISTANCE:(AT DC 500V)

PRI. TO SEC. 100 MΩ MIN.
 PRI. TO CORE. 100 MΩ MIN.
 SEC. TO CORE. 100 MΩ MIN.

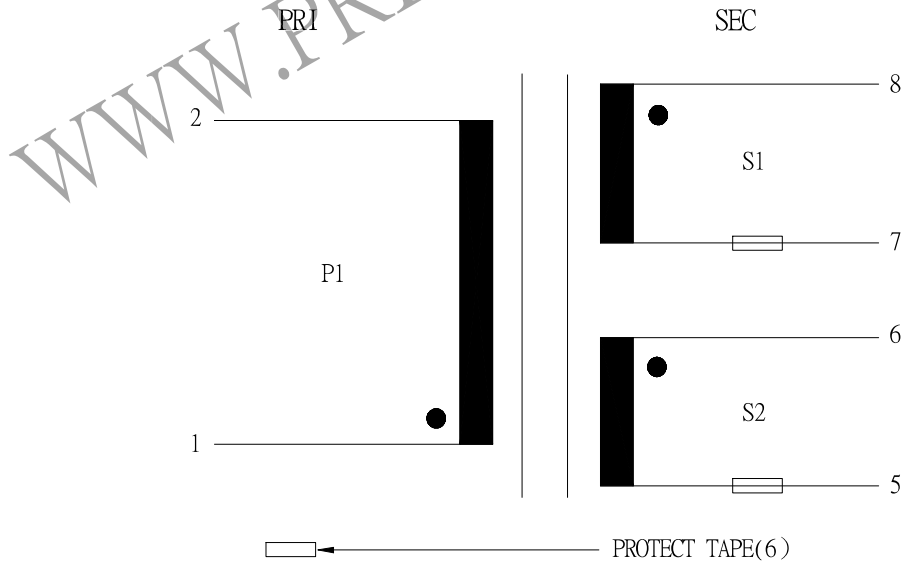
REPORT BY	CHECK BY	APPROVED BY	CUSTOMER :	DATE	
			PART NO : 83P-16008	REV NO.	
			ISSUE NO :	PAGE	4 - 2

4. WINDING SEQUENCE :



P1 WINDING FROM PIN 1-4 SIDE
 S1, S2 WINDING FROM PIN 5-8 SIDE

5. SCHEMATIC :



REPORT BY	CHECK BY	APPROVED BY	CUSTOMER :	DATE	
			PART NO : 83P-16008	REV NO.	
			ISSUE NO :	PAGE	4 - 3