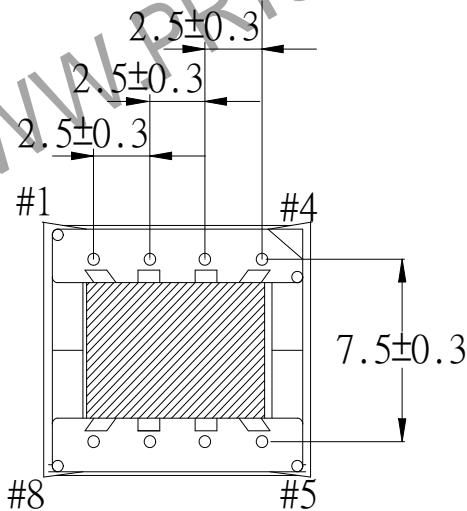
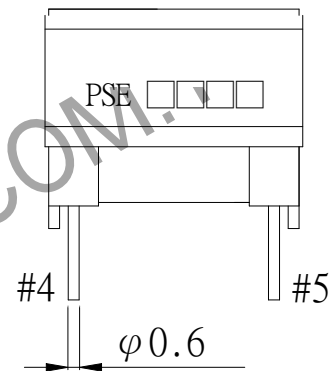
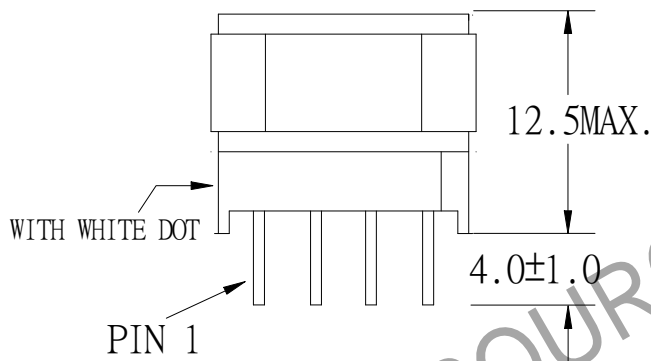
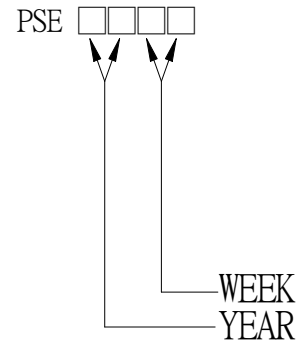
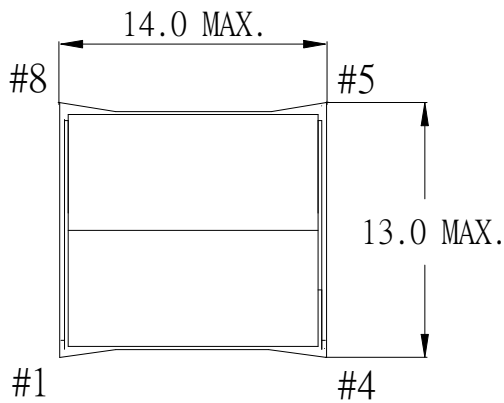


1. MECHANICAL & ASSEMBLY :



NOTE:  
PIN 1 WITH WHITE DOT

UNIT:m/m

REPORT BY	CHECK BY	APPROVED BY	CUSTOMER :	DATE	
			PART NO : 83P-16001	REV NO.	
			ISSUE NO :	PAGE	4 - 1

## 2. WINDING CONFIGURATION :

STEP	WINDING	MARGIN TAPE	START-FINISH	COPPER WIRE	TURNS	LAYER TAPE	TUBE	METHOD
1	W1		6 - 8	φ0.25	36	2Ts		CLOSE SPACE
2	W2		4 - 2	φ0.25	36	2Ts		CLOSE SPACE

NOTE:

## 3. ELECTRICAL CHARACTERISTICS :

PIN NO.	INDUCTANCE 1.0KHz, 1.0Vrms	LEAKAGE INDUCTANCE KHz, Vrms	VOLTAGE RATIO(V) F= 20KHz	DCR MAX. AT 25°C
6 - 8	100.0uH ±20%		INPUT 1Vrms	260.0 mΩ
4 - 2			1.003 Vrms±3.0%	320.0 mΩ

HI-POT TEST :( AT 1mA , 2 SEC. )

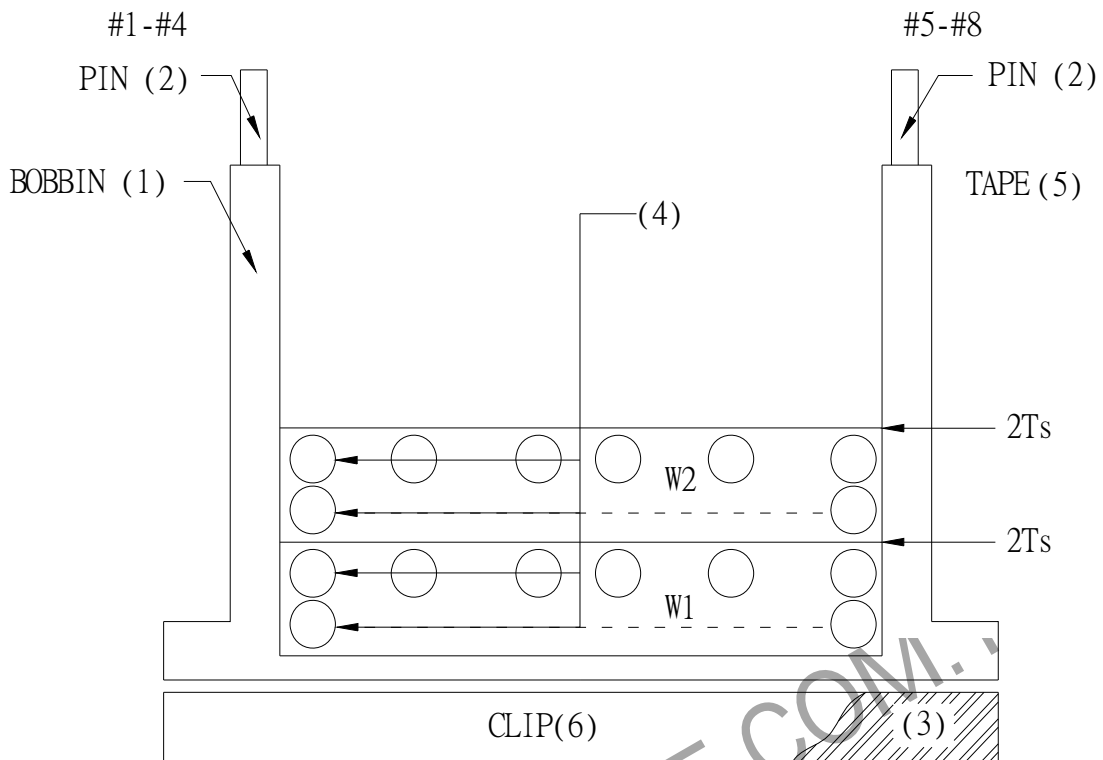
PRI. TO SEC. 600 VAC  
 PRI. TO CORE. 600 VAC  
 SEC. TO CORE. 600 VAC

INSULATION RESISTANCE:(AT DC 500V)

PRI. TO SEC. 100 MΩ MIN.  
 PRI. TO CORE. 100 MΩ MIN.  
 SEC. TO CORE. 100 MΩ MIN.

REPORT BY	CHECK BY	APPROVED BY	CUSTOMER :	DATE
			PART NO : 83P-16001	REV NO.
			ISSUE NO :	PAGE 4 - 2

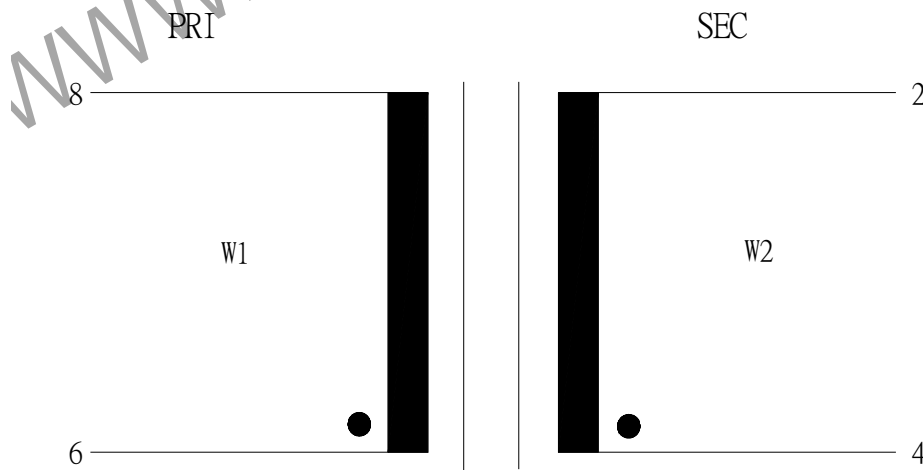
#### 4. WINDING SEQUENCE :



W2 WINDING FROM PIN 1-4 SIDE

W1 WINDING FROM PIN 5-8 SIDE

#### 5. SCHEMATIC :



REPORT BY	CHECK BY	APPROVED BY	CUSTOMER :	DATE	
			PART NO : 83P-16001	REV NO.	
			ISSUE NO :	PAGE	4 - 3

6 . MATERIAL LIST :

NO	DESCRIPTION	ITEM	MATERIAL	LIST OF SAMPLE	UL NO.	MANUFACTURE
1	BOBBIN	(1)	PHENOLIC (PM9630) Thickness:0.50 mm Min.	√	E41429	SUMITOMO
2	PIN	(2)	TINNED COPPER WIRE $\phi$ 0.60	√		WELL FORE
3	CORE	(3)	FERRITE CORE EP10 TP4A	√		TDG
4	COPPER WIRE	(4)	POLYURETHANE (2UEW) TYPYU-130 MW75-C	√	E197768	HENG YA
5	MYLAR TAPE	(5)	POLYESTER FILM #1318-1 Y	√	E17385	3M
6	CLIP	(6)	EP10-5	√		JIN SHENG
7	VARNISH		TVB2180T	√	E83702	KYOCERA

REPORT BY	CHECK BY	APPROVED BY	CUSTOMER :	DATE	
			PART NO : 83P-16001	REV NO.	
			ISSUE NO :	PAGE	4 - 4