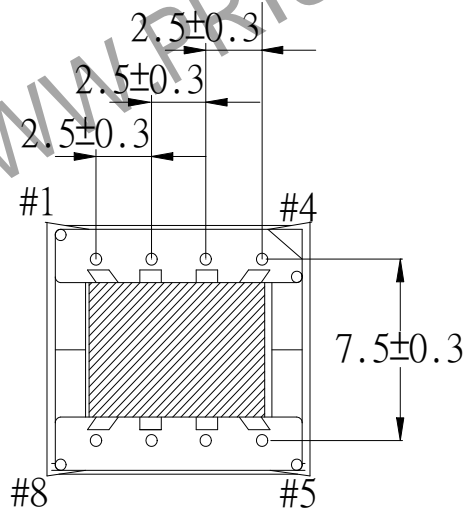
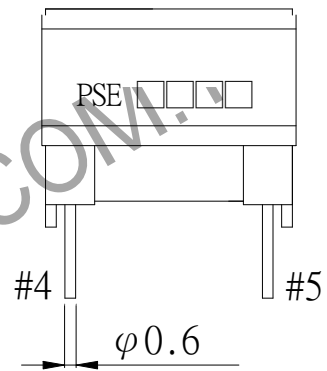
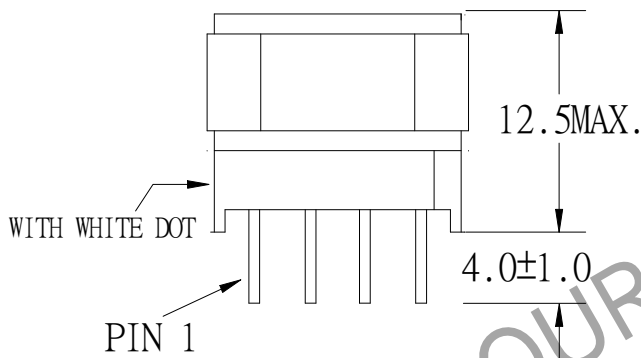
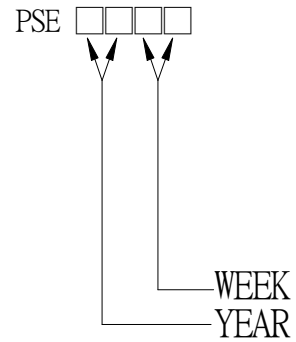
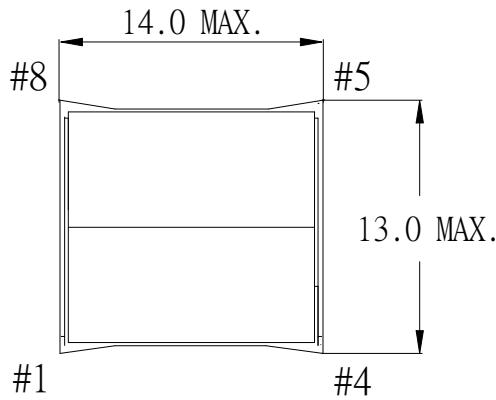


1. MECHANICAL & ASSEMBLY :



UNIT : mm

REPORT BY	CHECK BY	APPROVED BY	CUSTOMER :	DATE	
			PART NO : 83P-15019	REV NO.	
			ISSUE NO:	PAGE	4 - 1

2. WINDING CONFIGURATION:

STEP	WINDING	MARGIN TAPE	START-FINISH	COPPER WIRE	TURNS	LAYER TAPE	METHOD
1	W1		1 - 2	0.18 ϕ	56	1T	CLOSE
2	W2		8 - 7	0.18 ϕ	12	1T	SPACE
3	W3		7 - 6	0.18 ϕ	15	2T	SPACE

NOTE:

3. ELECTRICAL CHARACTERISTICS:

PIN NO.	INDUCTANCE 1.0 KHz, 1.0Vrms	LEAKAGE INDUCTANCE KHz, Vrms	VOLTAGE RATIO(V) f= 20KHz	DCR MAX AT 25°C
1 - 2	260.0uH \pm 10%		INPUT 1-Vrms	0.75 Ω
8 - 7	13.0uH \pm 20%		0.2138 Vrms \pm 4%	200.0m Ω
7 - 6	20.0uH \pm 20%		0.2677 Vrms \pm 4%	0.27 Ω

HI-POT TEST : (AT 1 mA, 2 SEC)

PRI TO PRI 600 VAC

PRI TO CORE 600 VAC

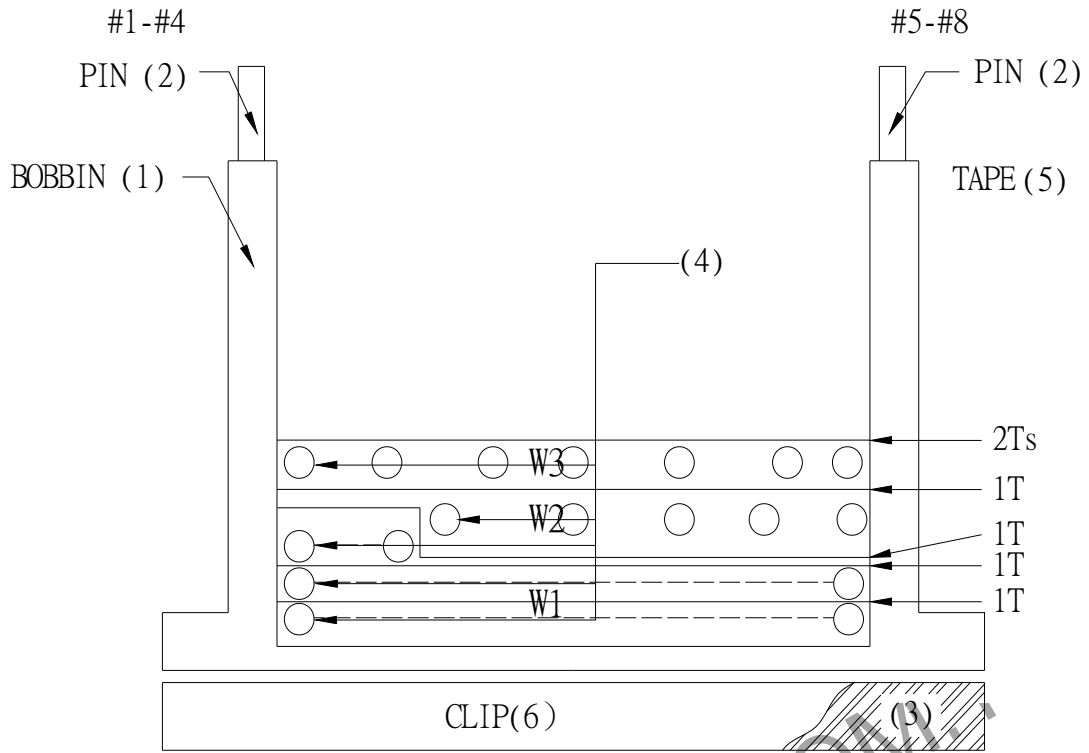
INSULATION RESISTANCE: (AT DC 500V)

PRI TO PRI 100 M Ω MIN.

PRI TO CORE 100 M Ω MIN.

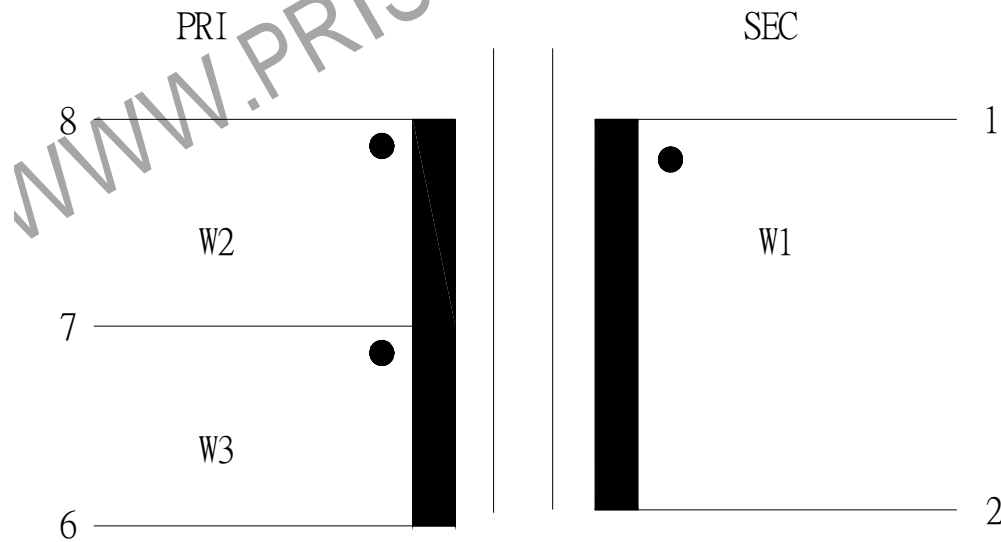
REPORT BY	CHECK BY	APPROVED BY	CUSTOMER :	DATE	
			PART NO : 83P-15019	REV NO.	
			ISSUE NO:	PAGE	4 - 2

4. WINDING SEQUENCE:



W1 WINDING FROM PIN 1-4 SIDE
 W2,W3 WINDING FROM PIN 5-8 SIDE

5. SCHEMATIC:



REPORT BY	CHECK BY	APPROVED BY	CUSTOMER :	DATE	
			PART NO : 83P-15019	REV NO.	
			ISSUE NO:	PAGE	4 - 3

6. MATERIAL LIST :

NO.	DESCRIPTION	ITEM	MATERIAL	LIST OF SAMPLE	UL NO.	MANUFACTURER
1	BOBBIN	(1)	PHENOLIC (PM9630) Thickness:0.30mm Min.	✓	E41429	SUMITOMO
2	PIN	(2)	TINNED COPPER WIRE φ 0.6	✓		WELL FORE
3	CORE	(3)	FERRITE CORE EP10 TP4	✓		TDG
4	COPPER WIRE	(4)	POLYURETHANE (2UEW) MW75-C TYPU-130	✓	E197768	HENG YA
5	MYLAR TAPE	(5)	POLYESTER FILM #1318-1 (Y)	✓	E17385	3M
6	CLIP	(6)	EP10-5	✓		JIN SHENG
7	VARNISH		TVB2180T	✓	E83702	KYOCERA

REPORT BY	CHECK BY	APPROVED BY	CUSTOMER :	DATE
			PART NO : 83P-15019	REV NO.
			ISSUE NO:	PAGE
				4 - 4