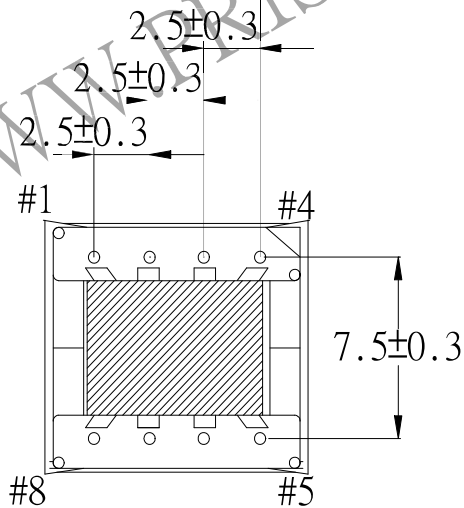
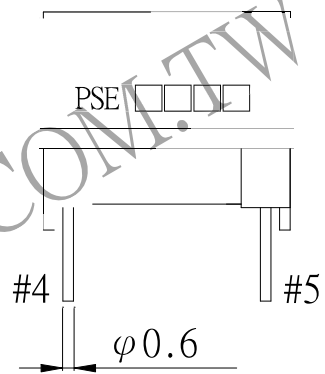
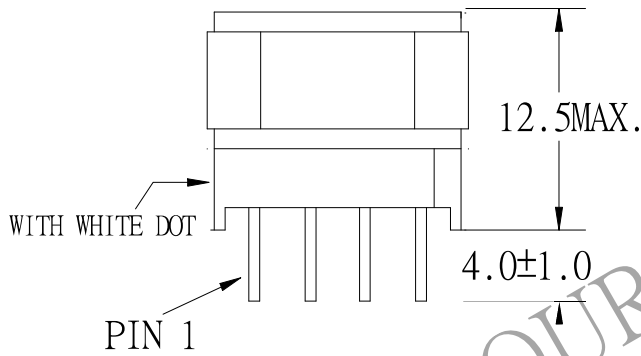
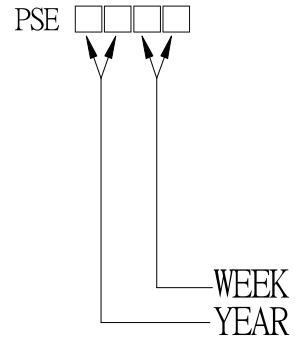
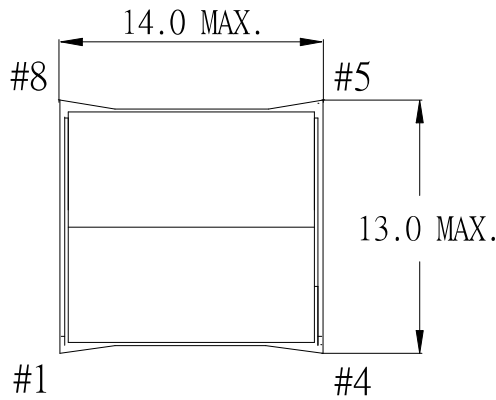


1. MECHANICAL & ASSEMBLY :



UNIT : mm

REPORT BY	CHECK BY	APPROVED BY	CUSTOMER :	DATE
			PART NO : 83P-15019	REV NO.
			ISSUE NO:	PAGE
				4 - 1

2. WINDING CONFIGURATION:

STEP	WINDING	MARGIN TAPE	START-FINISH	COPPER WIRE	TURNS	LAYER TAPE	METHOD
1	W1		1 - 2	0.18φ	56	1T	CLOSE
2	W2		8 - 7	0.18φ	12	1T	SPACE
3	W3		7 - 6	0.18φ	15	2T	SPACE

NOTE:

3. ELECTRICAL CHARACTERISTICS:

PIN NO.	INDUCTANCE 1.0 KHz, 1.0Vrms	LEAKAGE INDUCTANCE KHz, Vrms	VOLTAGE RATIO(V) f= 20KHz	DCR MAX AT 25°C
1 - 2	260.0uH±10%		INPUT 1 Vrms	0.75 Ω
8 - 7	13.0uH±20%		0.2138 Vrms±4%	200.0mΩ
7 - 6	20.0uH±20%		0.2677 Vrms±4%	0.27 Ω

HI-POT TEST : (AT 1 mA, 2 SEC)

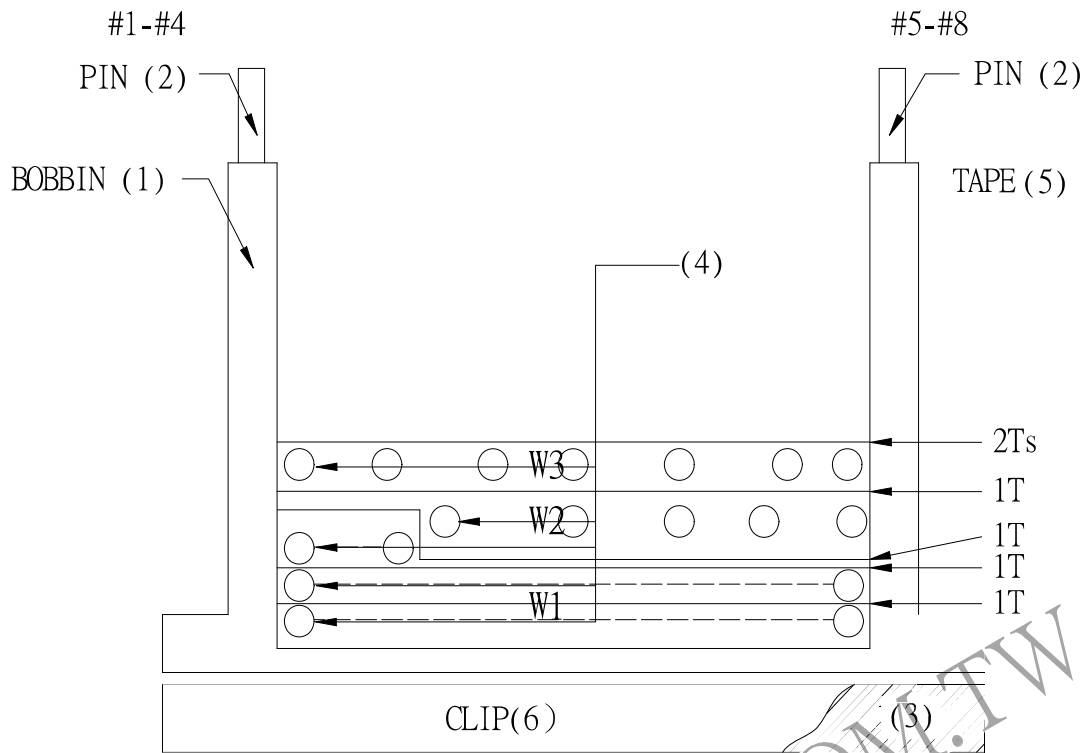
PRI TO PRI 600 VAC
 PRI TO CORE 600 VAC

INSULATION RESISTANCE: (AT DC 500V)

PRI TO PRI 100 MΩ MIN.
 PRI TO CORE 100 MΩ MIN.

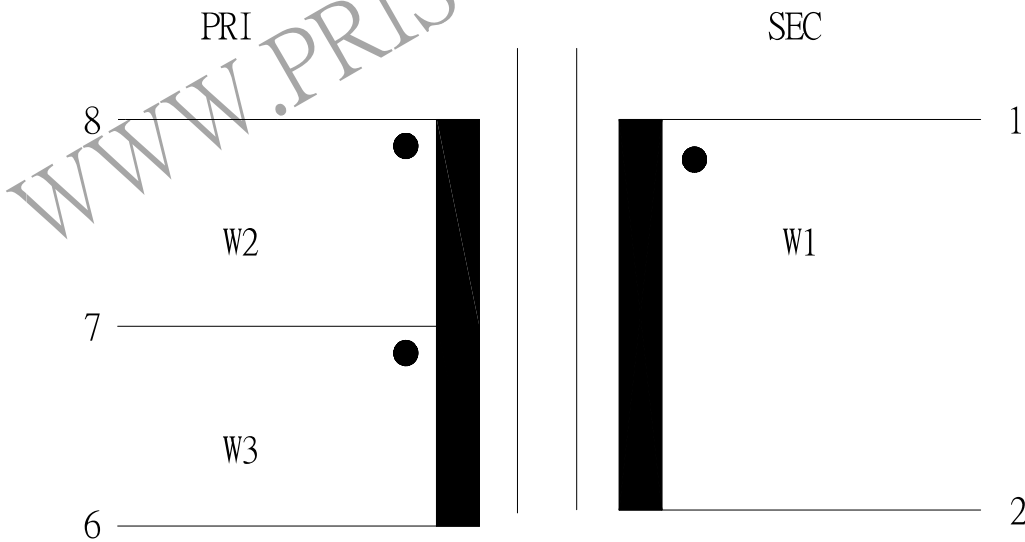
REPORT BY	CHECK BY	APPROVED BY	CUSTOMER :	DATE	
			PART NO : 83P-15019	REV NO.	
			ISSUE NO:	PAGE	4 - 2

4. WINDING SEQUENCE:



W1 WINDING FROM PIN 1-4 SIDE
 W2,W3 WINDING FROM PIN 5-8 SIDE

5. SCHEMATIC:



REPORT BY	CHECK BY	APPROVED BY	CUSTOMER :	DATE	
			PART NO : 83P-15019	REV NO.	
			ISSUE NO:	PAGE	4 - 3