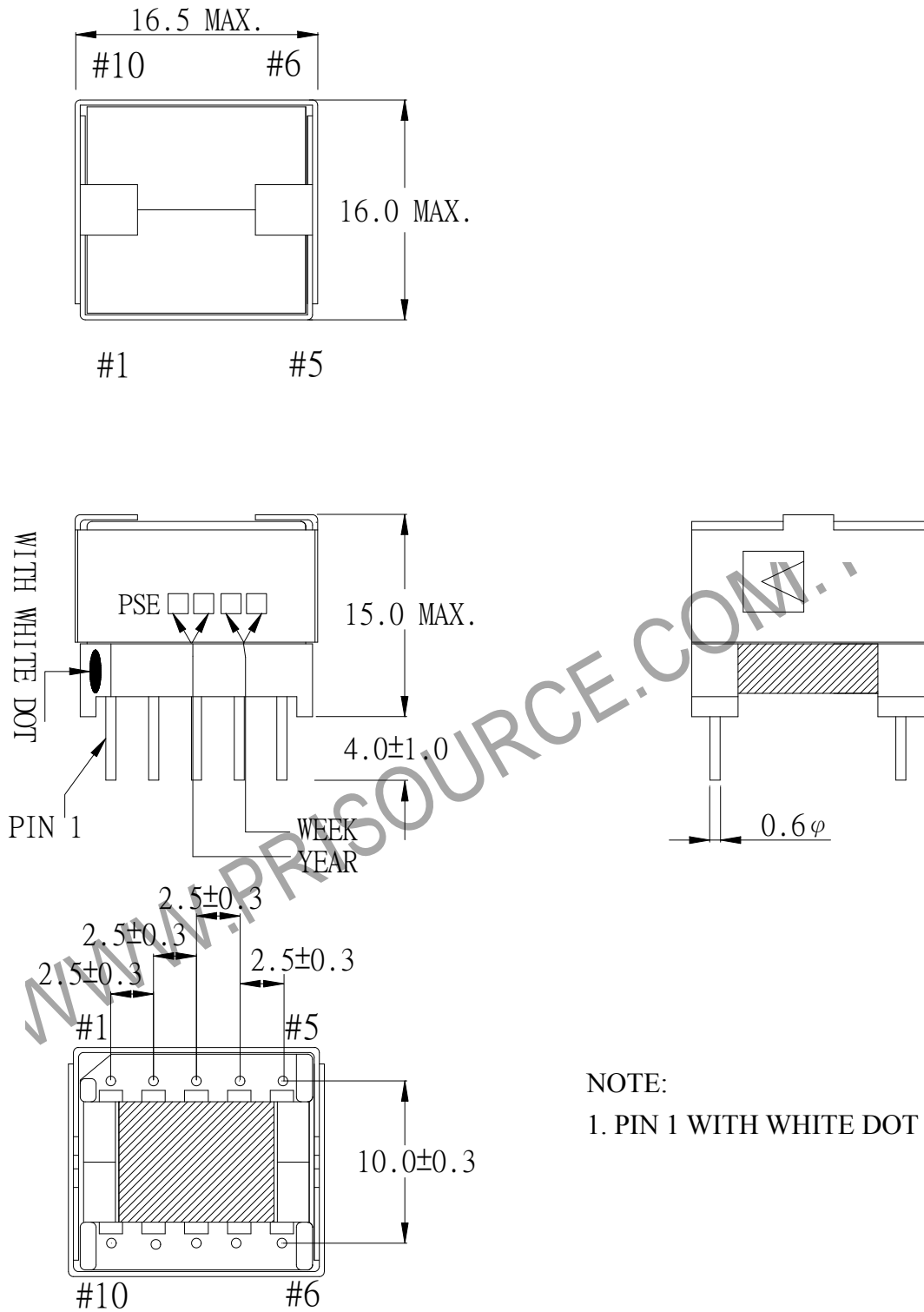


1. MECHANICAL & ASSEMBLY :



UNIT : mm

REPORT BY	CHECK BY	APPROVED BY	CUSTOMER :	DATE
			PART NO : 83P-15015	REV NO.
			ISSUE NO :	PAGE
				4 - 1

## 2. WINDING CONFIGURATION :

STEP	WINDING	MARGIN TAPE	START-FINISH	COPPER WIRE	TURNS	LAYER TAPE	METHOD
1	W1		1 - 2	0.25 $\phi$	52	1T/3Ts	CLOSE
2	W2a		10 - 9	0.25 $\phi$	25	1T	CLOSE
3	W2b		9 - 8	0.25 $\phi$	25	2Ts	CLOSE
4	W3		7 - 6	0.25 $\phi$	12	2Ts	CLOSE

NOTE:

## 3. ELECTRICAL CHARACTERISTICS :

PIN NO.	INDUCTANCE 1.0 KHz, 0.3Vrms	LEAKAGE INDUCTANCE KHz, Vrms	VOLTAGE RATIO(V) f= 20KHz	DCR MAX AT 25°C
1 - 2	310.0uH $\pm$ 20%		INPUT 1 Vrms	0.45 $\Omega$ MAX.
10 - 9			0.4817Vrms $\pm$ 4.0%	0.25 $\Omega$ MAX.
9 - 8			0.4817Vrms $\pm$ 4.0%	0.28 $\Omega$ MAX.
7 - 6			0.2323Vrms $\pm$ 4.0%	150.0m $\Omega$ MAX.

HI-POT TEST : (AT 1 mA, 2 SEC)

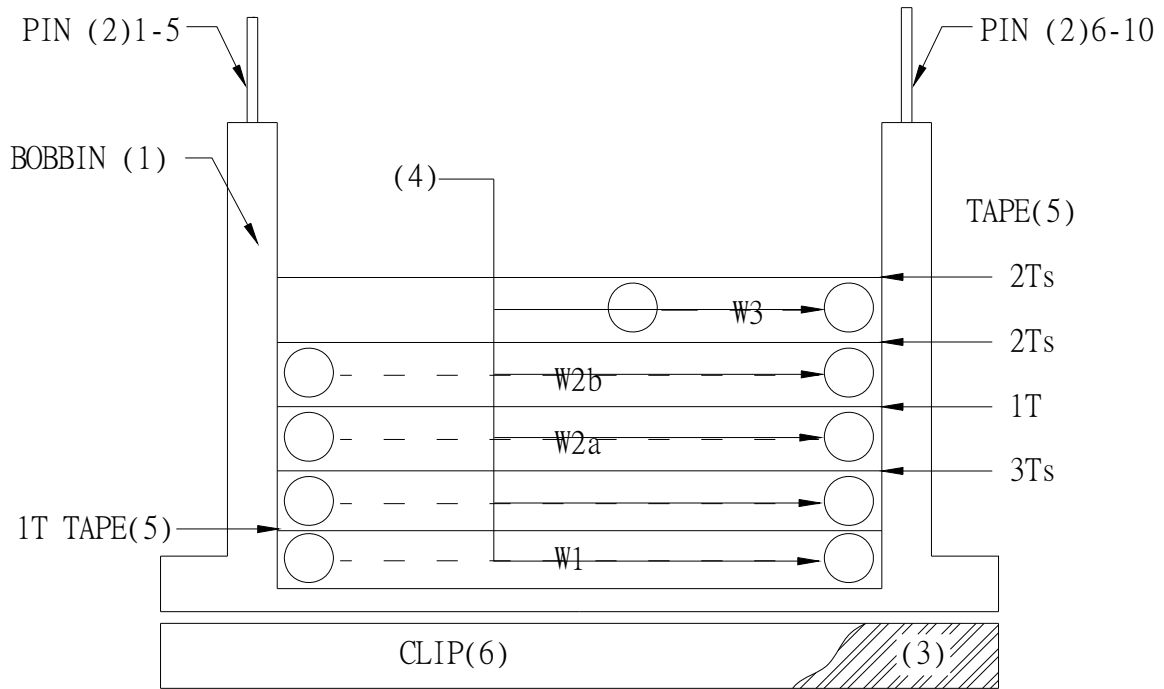
PRI TO SEC 600 VAC  
PRI, SEC TO CORE 600 VAC

INSULATION RESISTANCE: (AT DC 500V)

PRI TO SEC 100 M $\Omega$  MIN.  
PRI, SEC TO CORE 100 M $\Omega$  MIN.

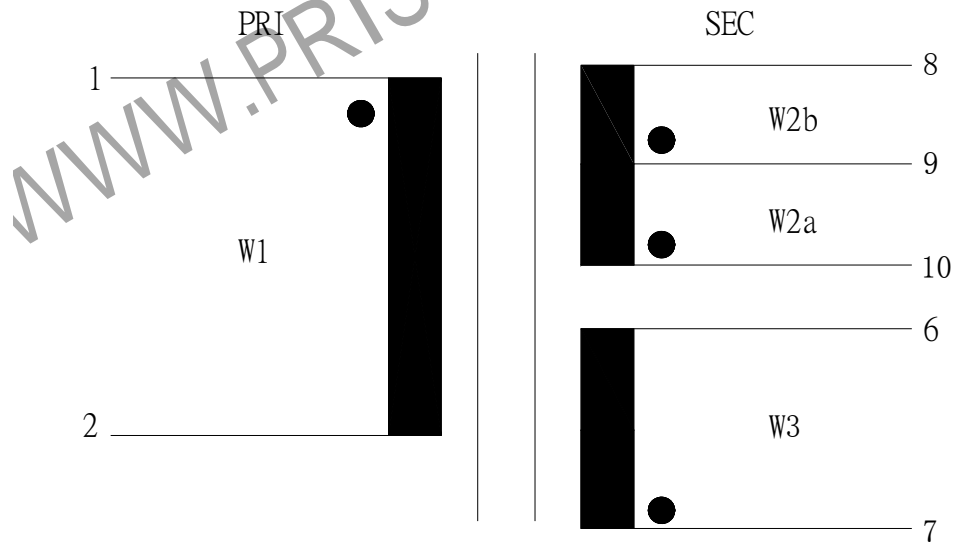
REPORT BY	CHECK BY	APPROVED BY	CUSTOMER :	DATE
			PART NO : 83P-15015	REV NO.
			ISSUE NO :	PAGE 4 - 2

#### 4. WINDING SEQUENCE:



W1 WINDING FROM PIN 1-5 SIDE  
 W2a, W2b, W3 WINDING FROM PIN 6-10 SIDE

#### 5. SCHEMATIC:



REPORT BY	CHECK BY	APPROVED BY	CUSTOMER :	DATE	
			PART NO : 83P-15015	REV NO.	
			ISSUE NO :	PAGE	4 - 3

6. MATERIAL LIST :

NO.	DESCRIPTION	ITEM	MATERIAL	LIST OF SAMPLE	UL NO.	MANUFACTURER
1	BOBBIN	(1)	PHENOLIC (PM9820) Thickness:0.30mm Min.	✓	E41429	SUMITOMO
2	PIN	(2)	TINNED COPPER WIRE φ 0.6	✓		WELL FORE
3	CORE	(3)	FERRITE CORE EP13 DMR44	✓		DMEGC
4	COPPER WIRE	(4)	POLYURETHANE (1UEW) MW75-C TYPU-130	✓	E197768	HENG YA
5	MYLAR TAPE	(5)	POLYESTER FILM #1318-1 (Y)	✓	E17385	3M
6	CLIP	(6)	PC-051-1	✓		PIN SHINE
7	VARNISH		TVB2180T	✓	E83702	KYOCERA

REPORT BY	CHECK BY	APPROVED BY	CUSTOMER :	DATE	
			PART NO : 83P-15015	REV NO.	
			ISSUE NO :	PAGE	4 - 4