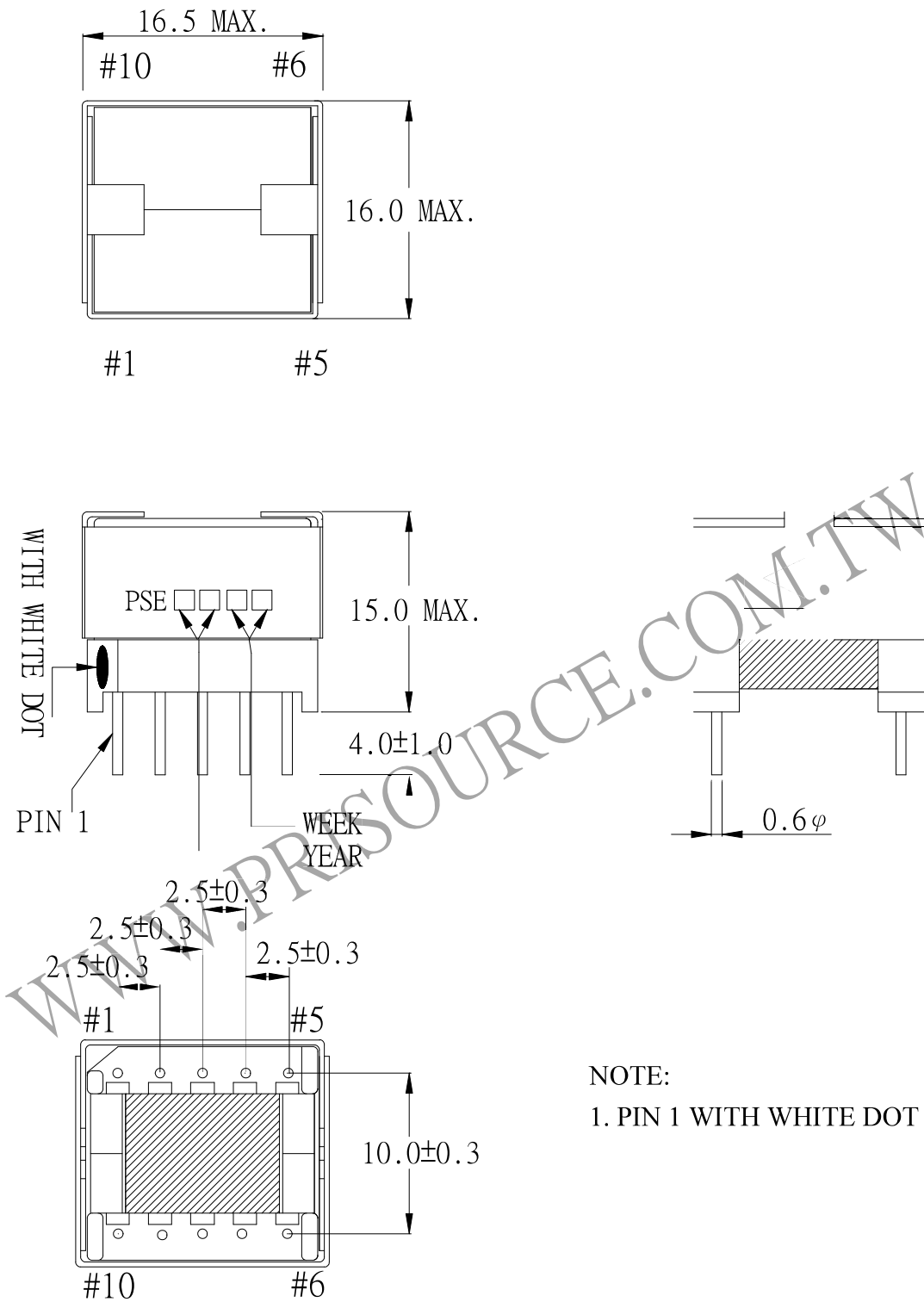


1. MECHANICAL & ASSEMBLY :



NOTE:
1. PIN 1 WITH WHITE DOT

UNIT : mm

REPORT BY	CHECK BY	APPROVED BY	CUSTOMER :	DATE
			PART NO : 83P-15015	REV NO.
			ISSUE NO :	PAGE
				4 - 1

2. WINDING CONFIGURATION :

STEP	WINDING	MARGIN TAPE	START-FINISH	COPPER WIRE	TURNS	LAYER TAPE	METHOD
1	W1		1 - 2	0.25 ϕ	52	1T/3Ts	CLOSE
2	W2a		10 - 9	0.25 ϕ	25	1T	CLOSE
3	W2b		9 - 8	0.25 ϕ	25	2Ts	CLOSE
4	W3		7 - 6	0.25 ϕ	12	2Ts	CLOSE

NOTE:

3. ELECTRICAL CHARACTERISTICS :

PIN NO.	INDUCTANCE 1.0 KHz, 0.3Vrms	LEAKAGE INDUCTANCE KHz, Vrms	VOLTAGE RATIO(V) f= 20KHz	DCR MAX AT 25°C
1 - 2	310.0uH \pm 20%		INPUT 1 Vrms	0.45 Ω MAX.
10 - 9			0.4817Vrms \pm 4.0%	0.25 Ω MAX.
9 - 8			0.4817Vrms \pm 4.0%	0.28 Ω MAX.
7 - 6			0.2323Vrms \pm 4.0%	150.0m Ω MAX.

HI-POT TEST : (AT 1 mA, 2 SEC)

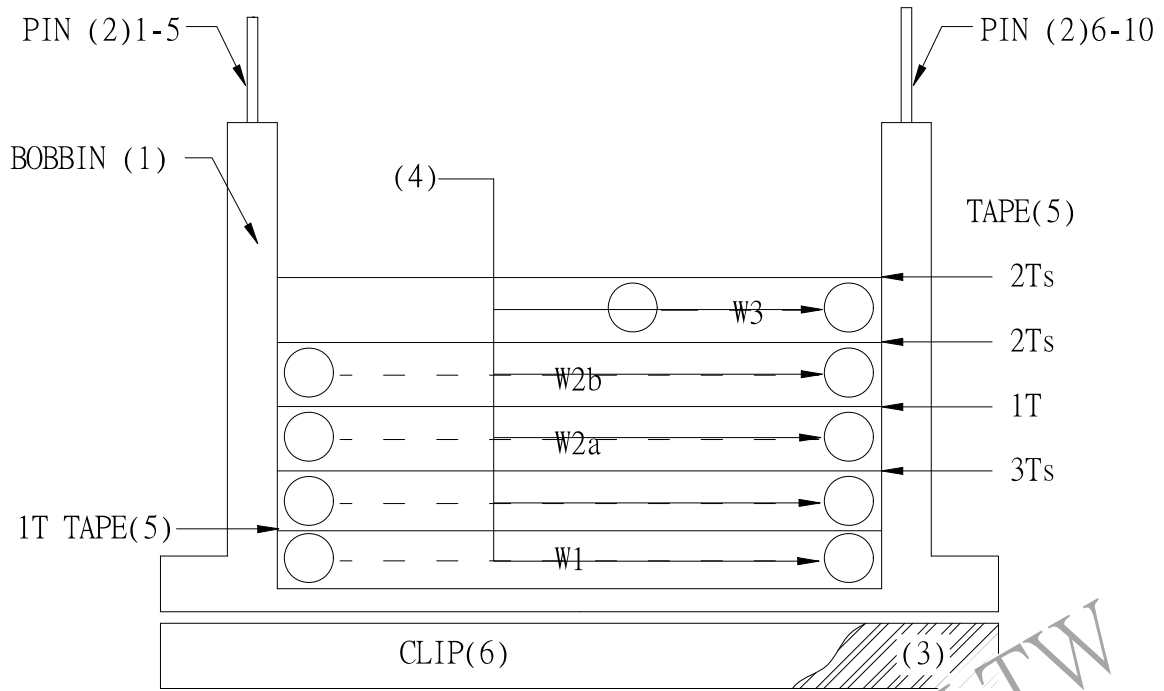
PRI TO SEC 600 VAC
PRI, SEC TO CORE 600 VAC

INSULATION RESISTANCE: (AT DC 500V)

PRI TO SEC 100 M Ω MIN.
PRI, SEC TO CORE 100 M Ω MIN.

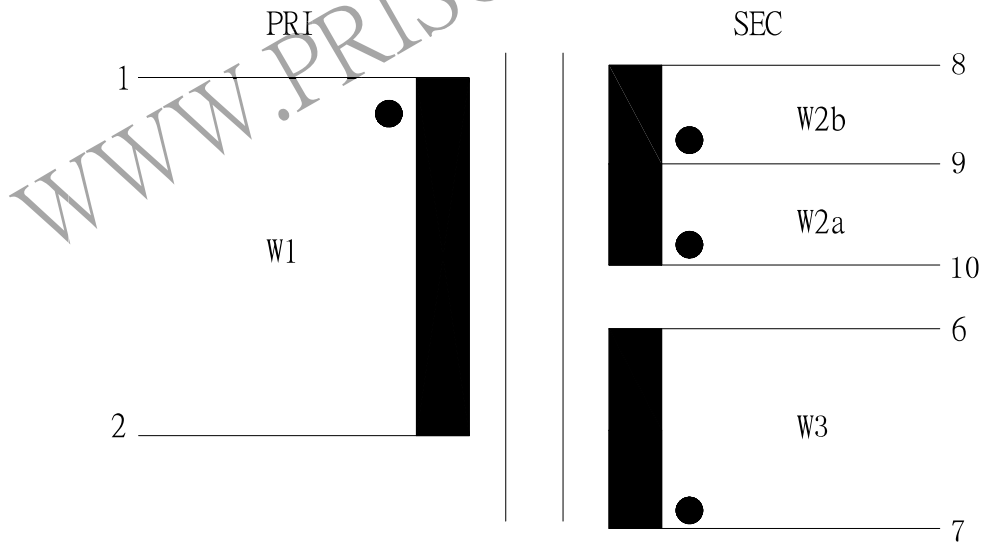
REPORT BY	CHECK BY	APPROVED BY	CUSTOMER :	DATE
			PART NO : 83P-15015	REV NO.
			ISSUE NO :	PAGE 4 - 2

4. WINDING SEQUENCE:



W1 WINDING FROM PIN 1-5 SIDE
 W2a, W2b, W3 WINDING FROM PIN 6-10 SIDE

5. SCHEMATIC:



REPORT BY	CHECK BY	APPROVED BY	CUSTOMER :	DATE	
			PART NO : 83P-15015	REV NO.	
			ISSUE NO :	PAGE	4 - 3