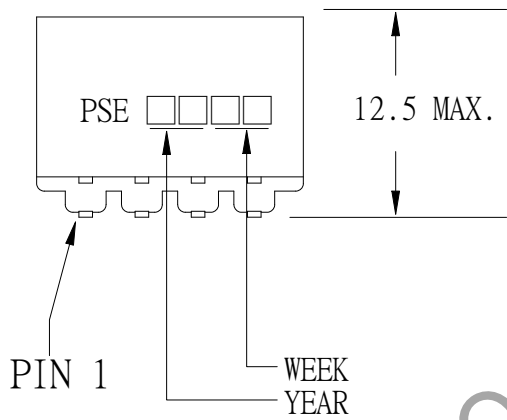
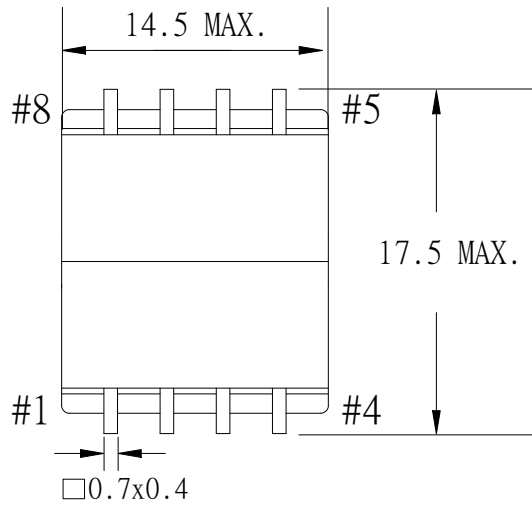
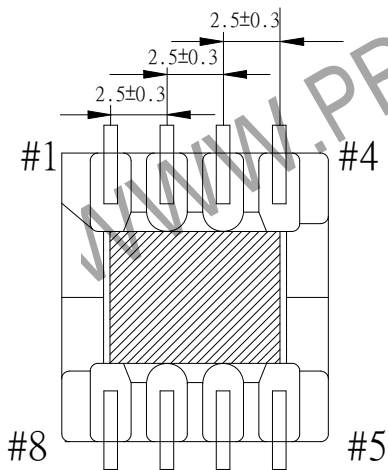
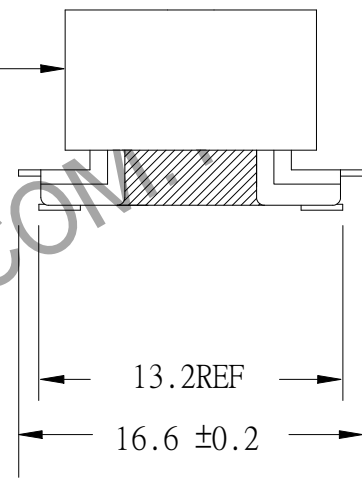


# 1. MECHANICAL & ASSEMBLY :



CORE TAPE 3Ts



UNIT:mm

REPORT BY	CHECK BY	APPROVED BY	CUSTOMER :	DATE	
			PART NO : 83P-15001	REV NO.	
			ISSUE NO :	PAGE	4 - 1

## 2. WINDING CONFIGURATION :

STEP	WINDING	MARGIN TAPE	START-FINISH	COPPER WIRE	TURNS	LAYER TAPE	METHOD
1	W1		6 - 5	0.16φ	55	2Ts	CLOSE
2	W2		1 - 2	0.25φ	38	2Ts	CLOSE
3	W3		8 - 7	0.16φ	55	2Ts	CLOSE
4	W4		3 - 4	0.16φ	31	2Ts	SPACER

NOTE:

## 3. ELECTRICAL CHARACTERISTICS :

PIN NO.	INDUCTANCE 1.0 KHz, 1.0Vrms	LEAKAGE INDUCTANCE KHz, Vrms	VOLTAGE RATIO(V) F= 20KHz	DCR MAX. AT 25°C
6 - 5	114.0uH±10%		INPUT 1 Vrms	0.96 Ω
1 - 2			0.6950Vrms±3.0%	0.33 Ω
8 - 7			1.0050Vrms±3.0%	1.45 Ω
3 - 4			0.5680Vrms±3.0%	0.90 Ω

HI-POT TEST :( AT 5 mA , 2SEC.)

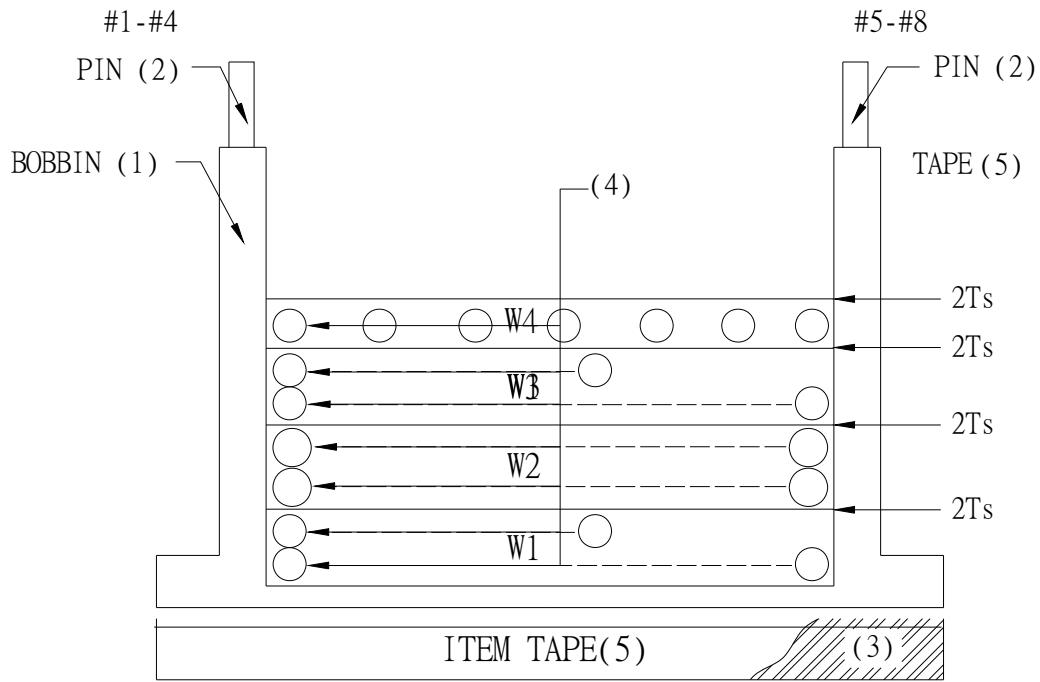
PRI	TO	SEC.	1200 VAC
PRI	TO	CORE.	1200 VAC
SEC	TO	CORE.	1200 VAC

INSULATION RESISTANCE:(AT DC 500V)

PRI	TO	SEC	100 MΩ MIN.
PRI	TO	CORE	100 MΩ MIN.
SEC	TO	CORE	100 MΩ MIN.

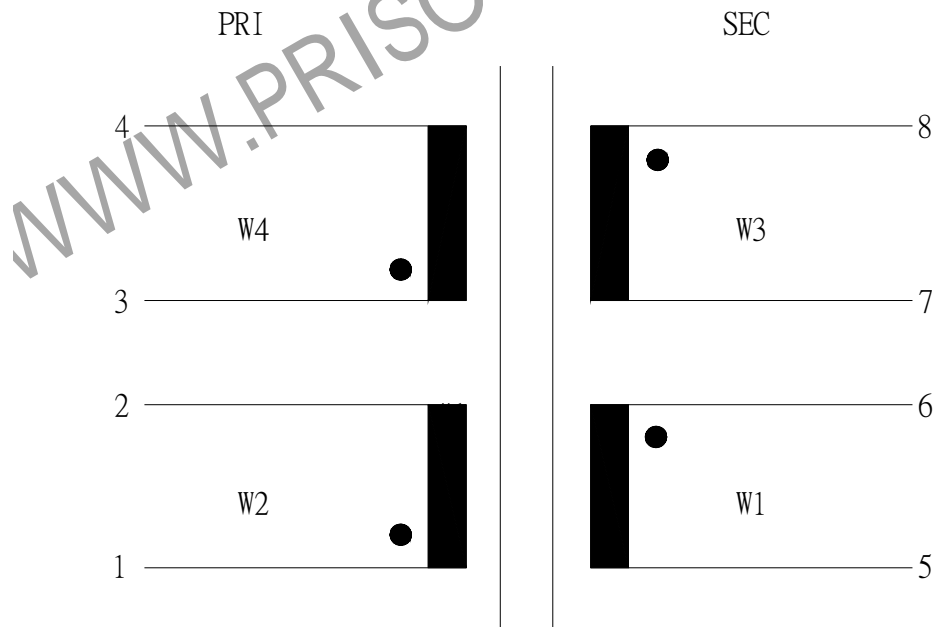
REPORT BY	CHECK BY	APPROVED BY	CUSTOMER :	DATE
			PART NO : 83P-15001	REV NO.
			ISSUE NO :	PAGE 4 - 2

#### 4. WINDING SEQUENCE:



W1, W3 WINDING FROM PIN 5-8 SIDE  
 W2, W4 WINDING FROM PIN 1-4 SIDE

#### 5. SCHEMATIC:



REPORT BY	CHECK BY	APPROVED BY	CUSTOMER :	DATE	
			PART NO : 83P-15001	REV NO.	
			ISSUE NO :	PAGE	4 - 3

6. MATERIAL LIST :

NO.	DESCRIPTION	ITEM	MATERIAL	LIST OF SAMPLE	UL NO.	MANUFACTURER
1	BOBBIN	(1)	PHENOLIC (PM9630) Thickness:0.50mm Min.	✓	E41429	SUMITOMO
2	PIN	(2)	TINNED C.P WIRE □0.7×0.4	✓		WELL FORE
3	CORE	(3)	FERRITE CORE  EP10 TP4A AL=37.7nH (WITH CENTER CORE GAP)	✓		TDG
4	COPPER WIRE	(4)	POLYURETHANE(2UEW) TYPU-130 MW75-C	✓	E197768	HENG YA
5	MYLAR TAPE	(5)	POLYESTER FILM #1318-1(Y)	✓	E17385	3M
6	VARNISH		TVB2180T	✓	E83702	KYOCERA

REPORT BY	CHECK BY	APPROVED BY	CUSTOMER :	DATE	
			PART NO : 83P-15001	REV NO.	
			ISSUE NO :	PAGE	4 - 4