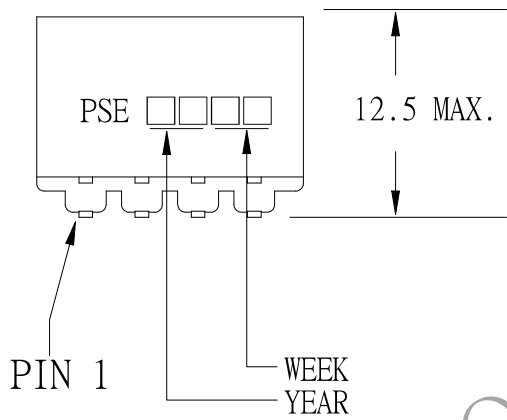
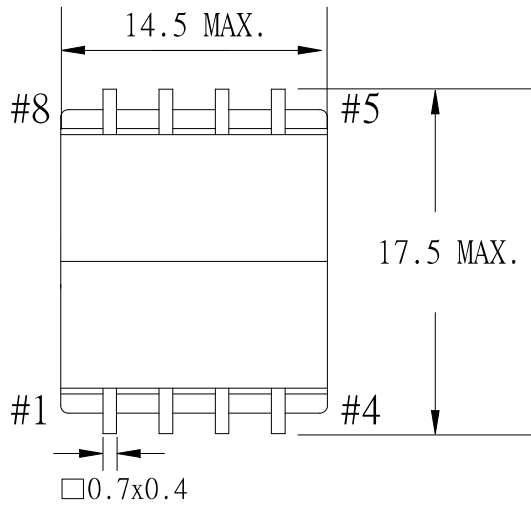
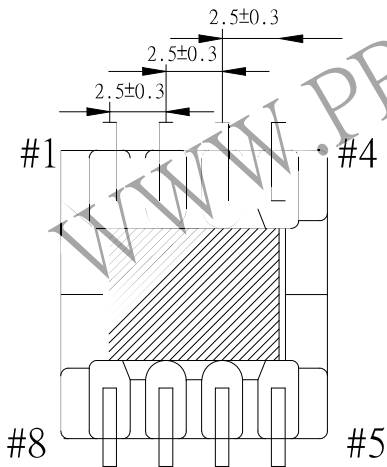
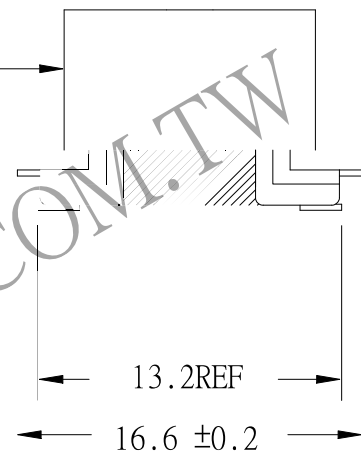


1. MECHANICAL & ASSEMBLY :



CORE TAPE 3Ts



UNIT:mm

REPORT	BY	CHECK	BY	APPROVED	BY	CUSTOMER :	DATE	
						PART NO : 83P-15001	REV NO.	
						ISSUE NO :	PAGE	4 - 1

2. WINDING CONFIGURATION :

STEP	WINDING	MARGIN TAPE	START-FINISH	COPPER WIRE	TURNS	LAYER TAPE	METHOD
1	W1		6 - 5	0.16 ϕ	55	2Ts	CLOSE
2	W2		1 - 2	0.25 ϕ	38	2Ts	CLOSE
3	W3		8 - 7	0.16 ϕ	55	2Ts	CLOSE
4	W4		3 - 4	0.16 ϕ	31	2Ts	SPACER

NOTE:

3. ELECTRICAL CHARACTERISTICS :

PIN NO.	INDUCTANCE 1.0 KHz, 1.0Vrms	LEAKAGE INDUCTANCE KHz, Vrms	VOLTAGE RATIO(V) F= 20KHz INPUT 1 Vrms	DCR MAX. AT 25°C
6 - 5	114.0uH \pm 10%			0.96 Ω
1 - 2			0.6950Vrms \pm 3.0%	0.33 Ω
8 - 7			1.0050Vrms \pm 3.0%	1.45 Ω
3 - 4			0.5680Vrms \pm 3.0%	0.90 Ω

HI-POT TEST :(AT 5 mA , 2SEC.)

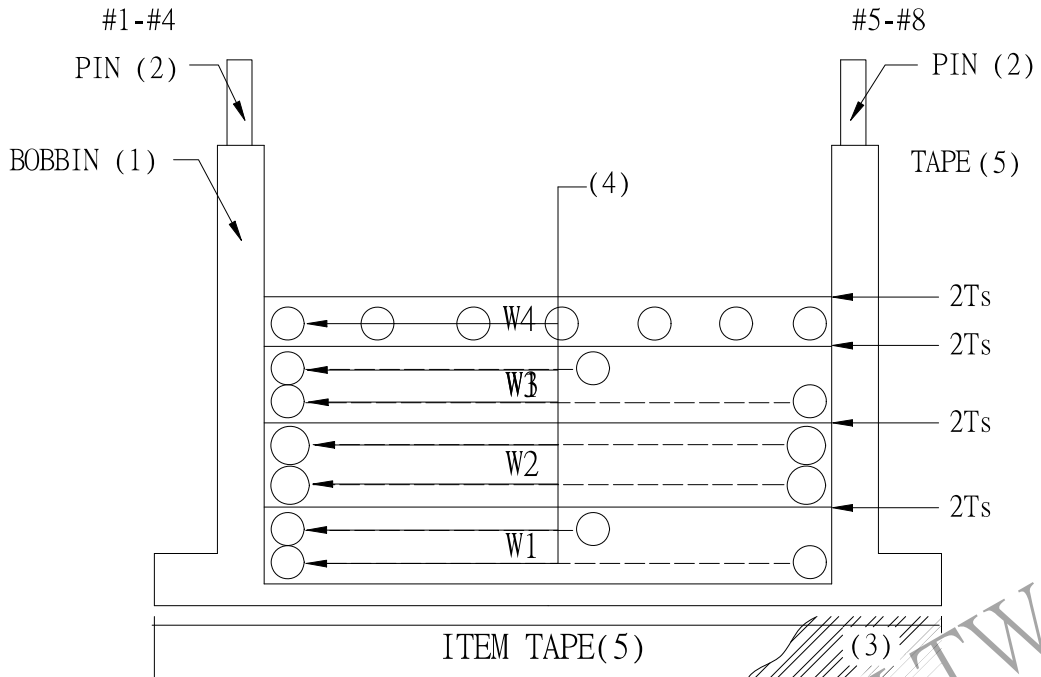
PRI	TO	SEC.	1200 VAC
PRI	TO	CORE.	1200 VAC
SEC	TO	CORE.	1200 VAC

INSULATION RESISTANCE:(AT DC 500V)

PRI	TO	SEC	100 M Ω MIN.
PRI	TO	CORE	100 M Ω MIN.
SEC	TO	CORE	100 M Ω MIN.

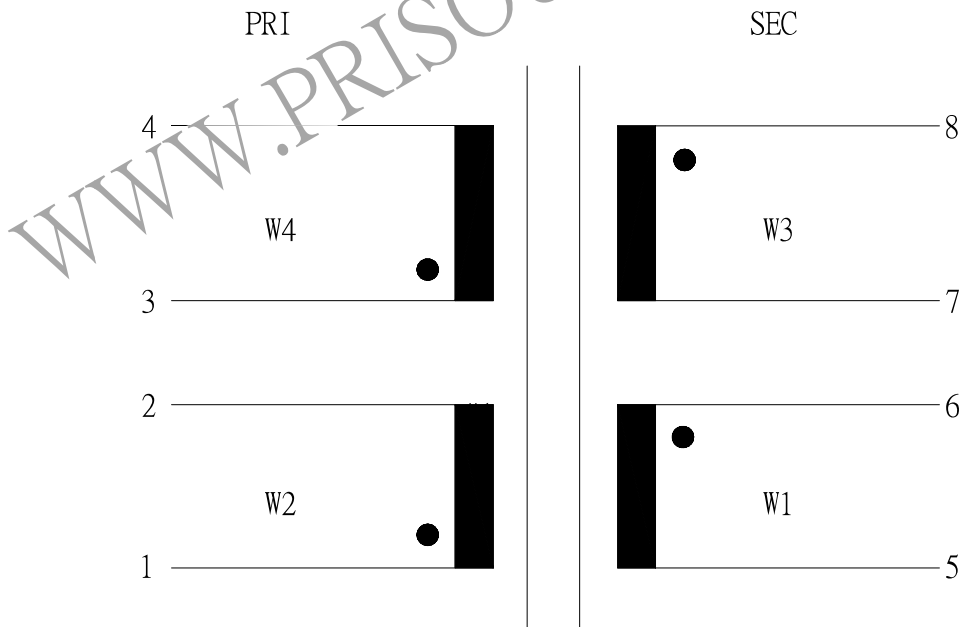
REPORT BY	CHECK BY	APPROVED BY	CUSTOMER :	DATE	
			PART NO : 83P-15001	REV NO.	
			ISSUE NO :	PAGE	4 - 2

4. WINDING SEQUENCE:



W1, W3 WINDING FROM PIN 5-8 SIDE
 W2, W4 WINDING FROM PIN 1-4 SIDE

5. SCHEMATIC:



REPORT BY	CHECK BY	APPROVED BY	CUSTOMER :	DATE	
			PART NO : 83P-15001	REV NO.	
			ISSUE NO :	PAGE	4 - 3