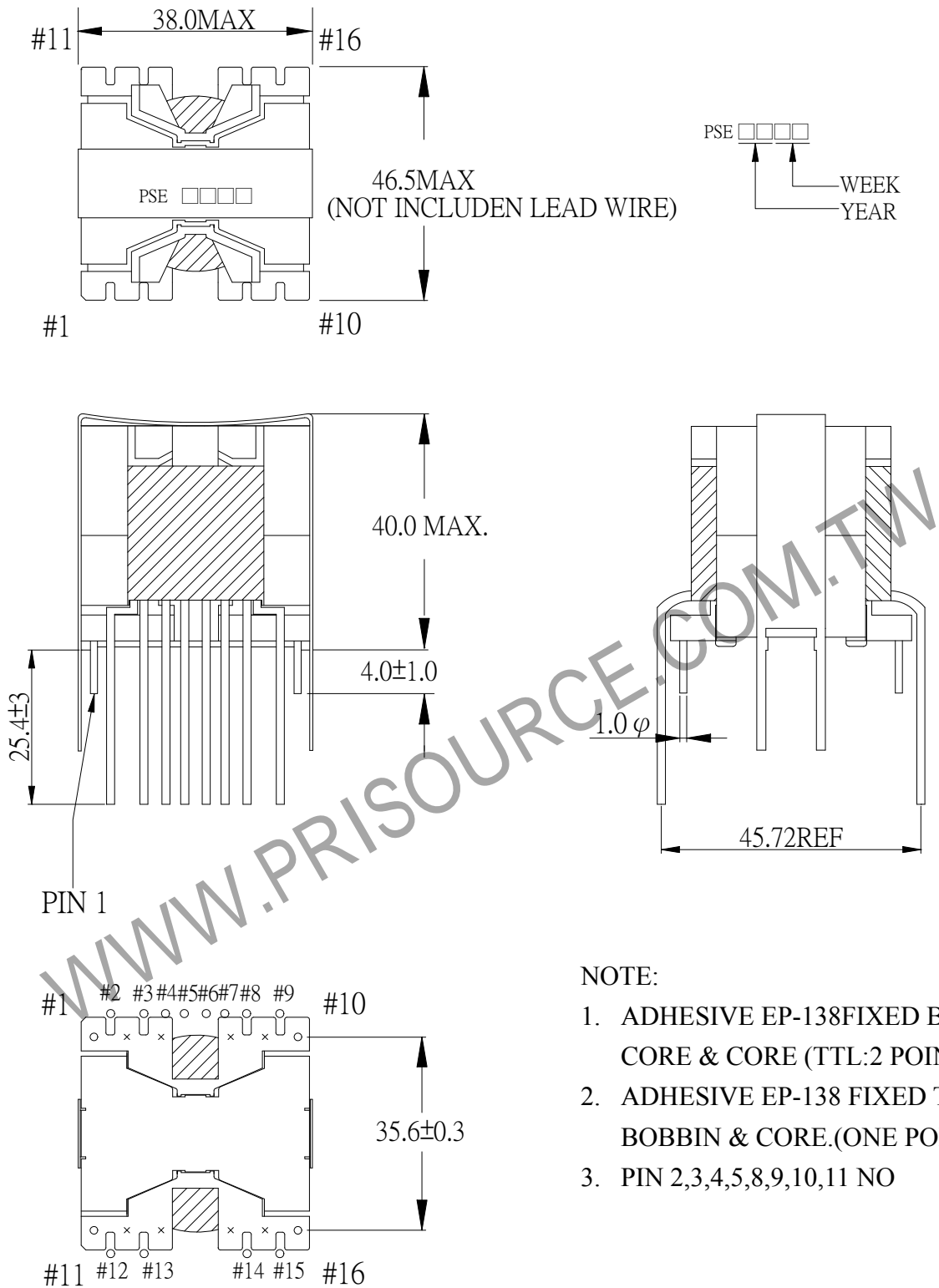


1. MECHANICAL & ASSEMBLY :



NOTE:

1. ADHESIVE EP-138 FIXED BETWEEN CORE & CORE (TTL:2 POINTS)
2. ADHESIVE EP-138 FIXED TOP OF BOBBIN & CORE.(ONE POINT)
3. PIN 2,3,4,5,8,9,10,11 NO

UNIT : m/ m

REPORT BY	CHECK BY	APPROVED BY	CUSTOMER :	DATE	
			PART NO : 83P-13014	REV NO.	
			ISSUE NO :	PAGE	4 - 1

## 2. WINDING CONFIGURATION :

STEP	WINDING	START-FINISH	COPPER WIRE	TURNS	LAYER	TUBE	METHOD
1	W1	2,3 - 4,5	0.40 $\phi$ /8C $\times$ 4	3	2Ts	#11	CLOSE
2	W3	12 - 13	0.32 $\phi$ /16C	10	2Ts	#11	CLOSE
3	W4	14 - 15	0.32 $\phi$ /16C	10	2Ts	#11	CLOSE
4	W2	6,7 - 8,9	0.40 $\phi$ /8C $\times$ 4	3	2Ts	#11	CLOSE

NOTE:

## 3. ELECTRICAL CHARACTERISTICS :

PIN NO.	INDUCTANCE 1.0 KHz, 0.3Vrms	LEAKAGE INDUCTANCE KHz, Vrms	VOLTAGE RATIO(V) f= 20KHz	DCR MAX AT 25°C
2,3 - 4,5	40.0uH $\pm$ 20%		0.3000Vrms $\pm$ 4%	1.50m $\Omega$
6,7 - 8,9	40.0uH $\pm$ 20%		0.3000Vrms $\pm$ 4%	2.00m $\Omega$
12 - 13	486.0uH $\pm$ 30%		INPUT 1 Vrms	13.5m $\Omega$
14 - 15	486.0uH $\pm$ 30%		1.0000Vrms $\pm$ 3%	15.0m $\Omega$

HI-POT TEST : (AT 5 mA, 2 SEC)

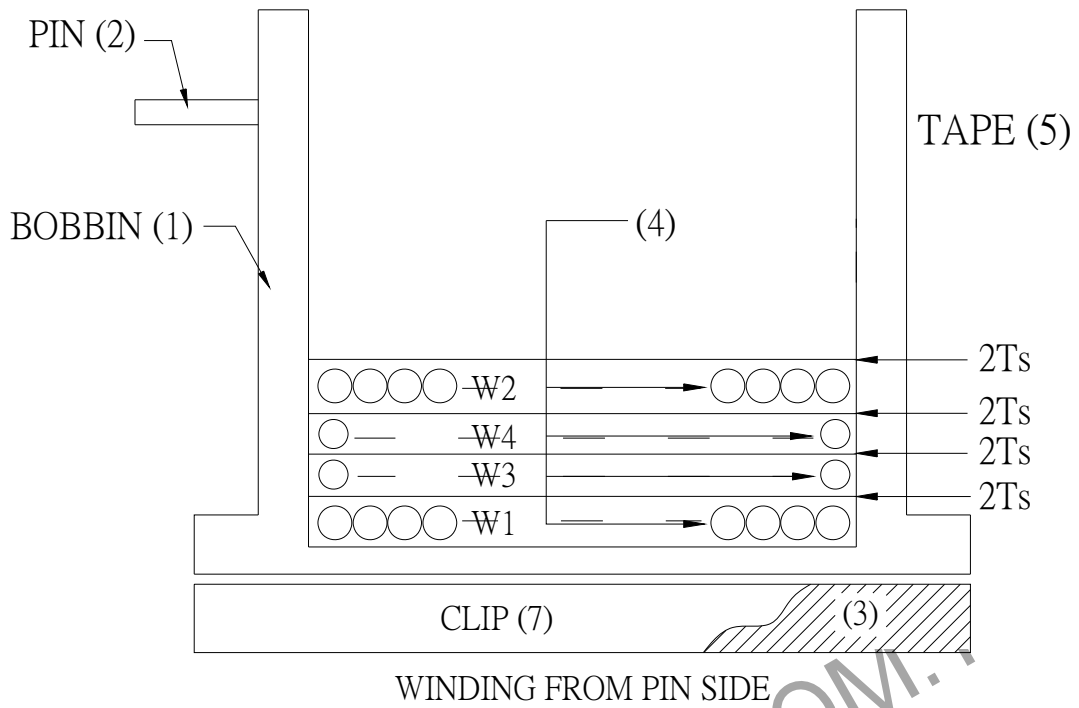
PRI TO SEC 500 VAC

INSULATION RESISTANCE: (AT DC 500V)

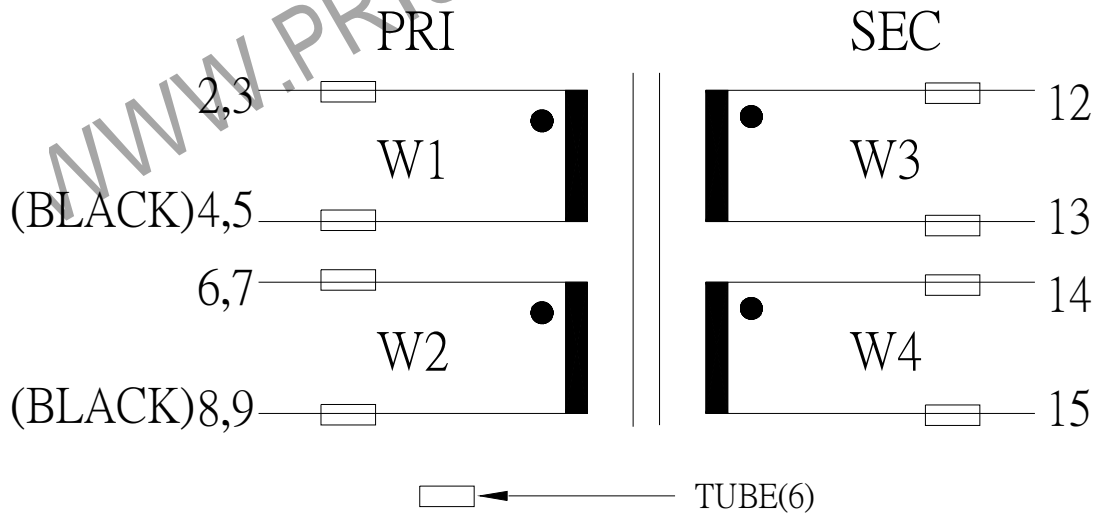
PRI TO SEC 100 M $\Omega$  MIN.

REPORT BY	CHECK BY	APPROVED BY	CUSTOMER :	DATE
			PART NO : 83P-13014	REV NO.
			ISSUE NO :	PAGE 4 - 2

#### 4. WINDING SEQUENCE:



#### 5. SCHEMATIC:



REPORT BY	CHECK BY	APPROVED BY	CUSTOMER :	DATE	
			PART NO : 83P-13014	REV NO.	
			ISSUE NO :	PAGE	4 - 3

6. MATERIAL LIST :

NO.	DESCRIPTION	ITEM	MATERIAL	LIST OF SAMPLE	UL NO.	MANUFACTURER
1	BOBBIN	(1)	PHENOLIC (T375J) Thickness:0.80mm Min.	✓	E59481	CHANG CHUN
2	PIN	(2)	TINNED C.P WIRE φ 1.0	✓		
3	CORE	(3)	FERRITE CORE PQ3535 TP4A	✓		TDG
4	COPPER WIRE	(4)	POLYURETHANE (2UEWF) MW79 TY1700-U155	✓	E197768	HENG YA
5	MYLAR TAPE	(5)	POLYESTER FILM #1318-1 (Y)	✓	E17385	3M
6	TUBE	(6)	TEFLON TUBE TFL	✓	E156256	GREAT HOLDING
7	CLIP	(7)	PQ3535	✓		JIN SHENG
8	ADHESIVE		EP-138	✓		CEMEDINE
9	VARNISH		WP-2952F-2G	✓	E72979	HITACHI

REPORT BY	CHECK BY	APPROVED BY	CUSTOMER :	DATE
			PART NO : 83P-13014	REV NO.
			ISSUE NO :	PAGE 4 - 4