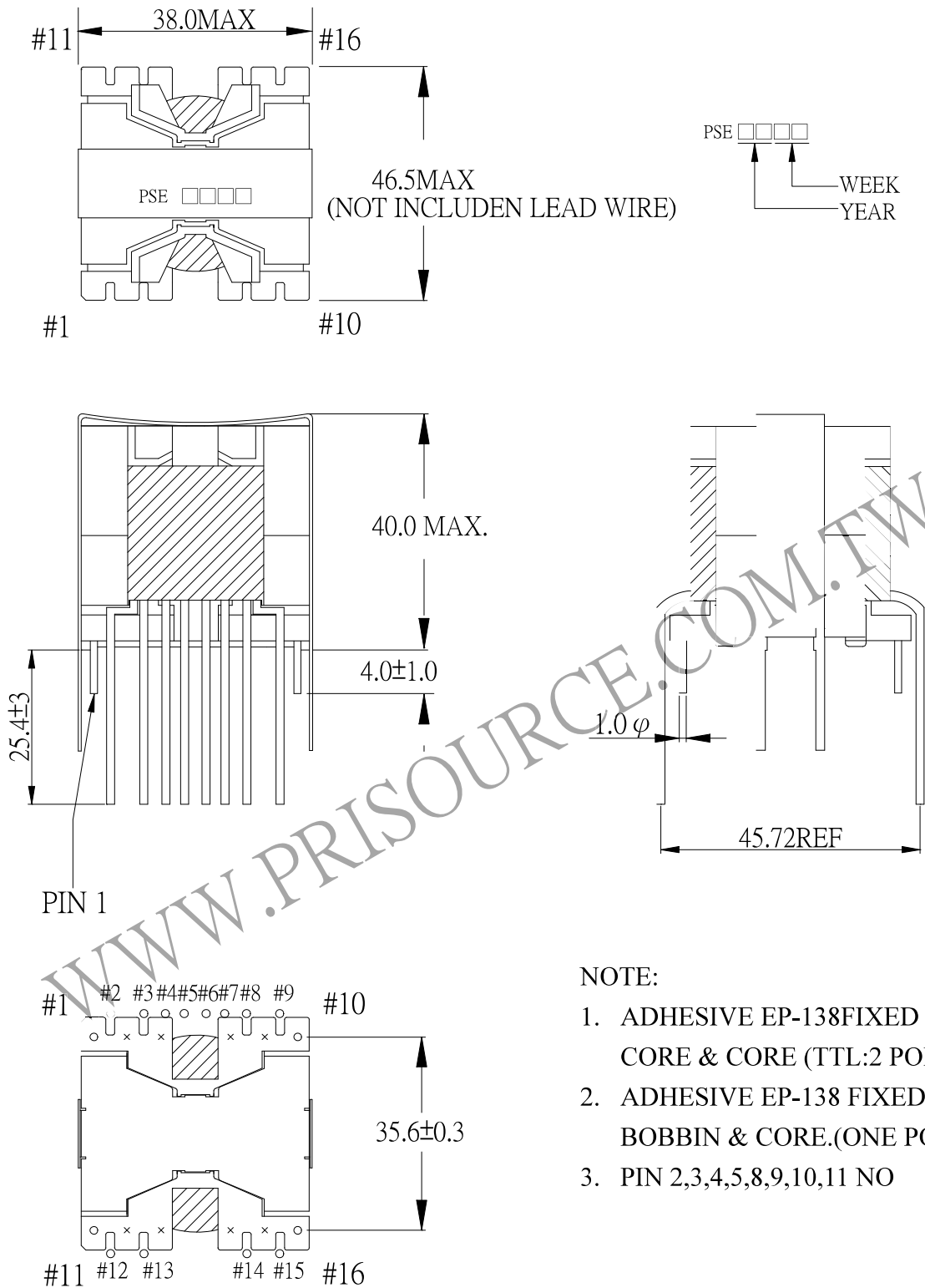


1. MECHANICAL & ASSEMBLY :



NOTE:

1. ADHESIVE EP-138FIXED BETWEEN CORE & CORE (TTL:2 POINTS)
2. ADHESIVE EP-138 FIXED TOP OF BOBBIN & CORE.(ONE POINT)
3. PIN 2,3,4,5,8,9,10,11 NO

UNIT : m/ m

REPORT	BY	CHECK	BY	APPROVED	BY	CUSTOMER :	DATE	
						PART NO : 83P-13014	REV NO.	
						ISSUE NO :	PAGE	4 - 1

2. WINDING CONFIGURATION :

STEP	WINDING	START-FINISH	COPPER WIRE	TURNS	LAYER	TUBE	METHOD
1	W1	2,3 - 4,5	0.40 ϕ /8C \times 4	3	2Ts	#11	CLOSE
2	W3	12 - 13	0.32 ϕ /16C	10	2Ts	#11	CLOSE
3	W4	14 - 15	0.32 ϕ /16C	10	2Ts	#11	CLOSE
4	W2	6,7 - 8,9	0.40 ϕ /8C \times 4	3	2Ts	#11	CLOSE

NOTE:

3. ELECTRICAL CHARACTERISTICS :

PIN NO.	INDUCTANCE 1.0 KHz, 0.3Vrms	LEAKAGE INDUCTANCE KHz, Vrms	VOLTAGE RATIO(V) f= 20KHz	DCR MAX AT 25°C
2,3 - 4,5	40.0uH \pm 20%		0.3000Vrms \pm 4%	1.50m Ω
6,7 - 8,9	40.0uH \pm 20%		0.3000Vrms \pm 4%	2.00m Ω
12 - 13	486.0uH \pm 30%		INPUT 1 Vrms	13.5m Ω
14 - 15	486.0uH \pm 30%		1.0000Vrms \pm 3%	15.0m Ω

HI-POT TEST : (AT 5 mA, 2 SEC)

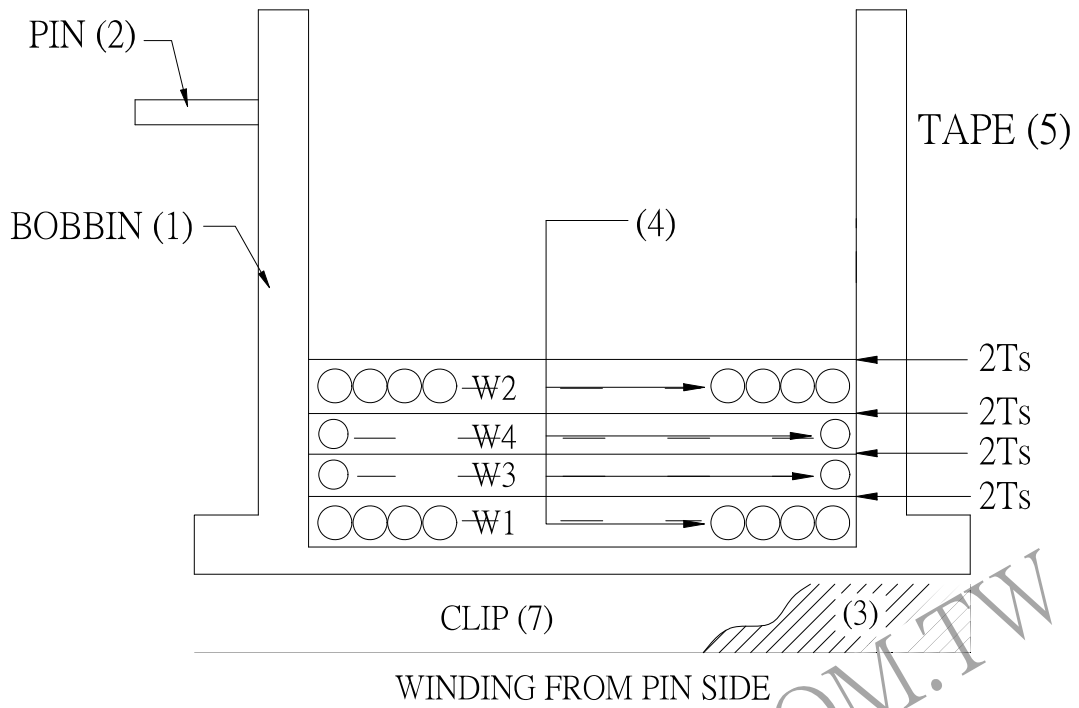
PRI TO SEC 500 VAC

INSULATION RESISTANCE: (AT DC 500V)

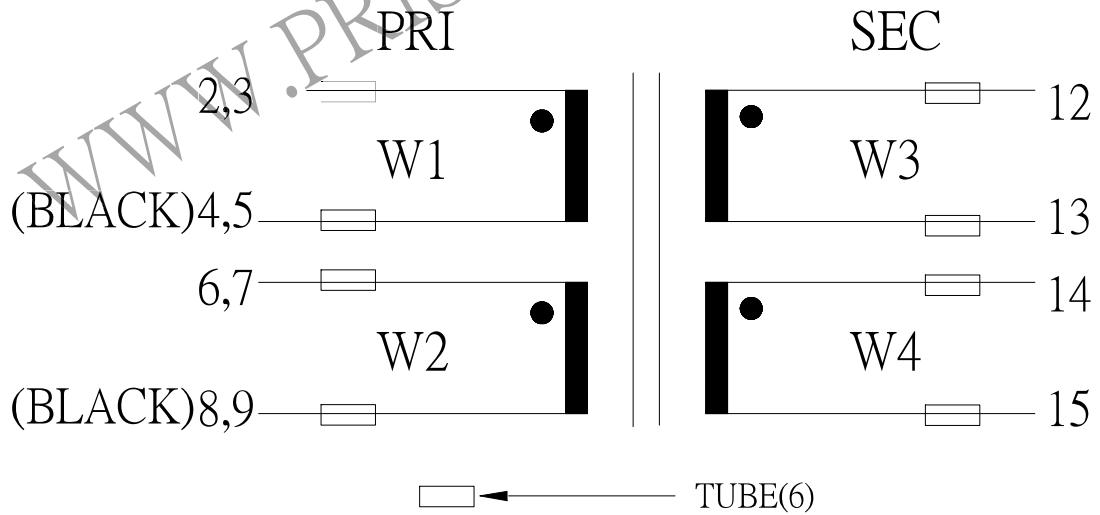
PRI TO SEC 100 M Ω MIN.

REPORT BY	CHECK BY	APPROVED BY	CUSTOMER :	DATE
			PART NO : 83P-13014	REV NO.
			ISSUE NO :	PAGE 4 - 2

4. WINDING SEQUENCE:



5. SCHEMATIC:



REPORT BY	CHECK BY	APPROVED BY	CUSTOMER :	DATE	
			PART NO : 83P-13014	REV NO.	
			ISSUE NO :	PAGE	4 - 3