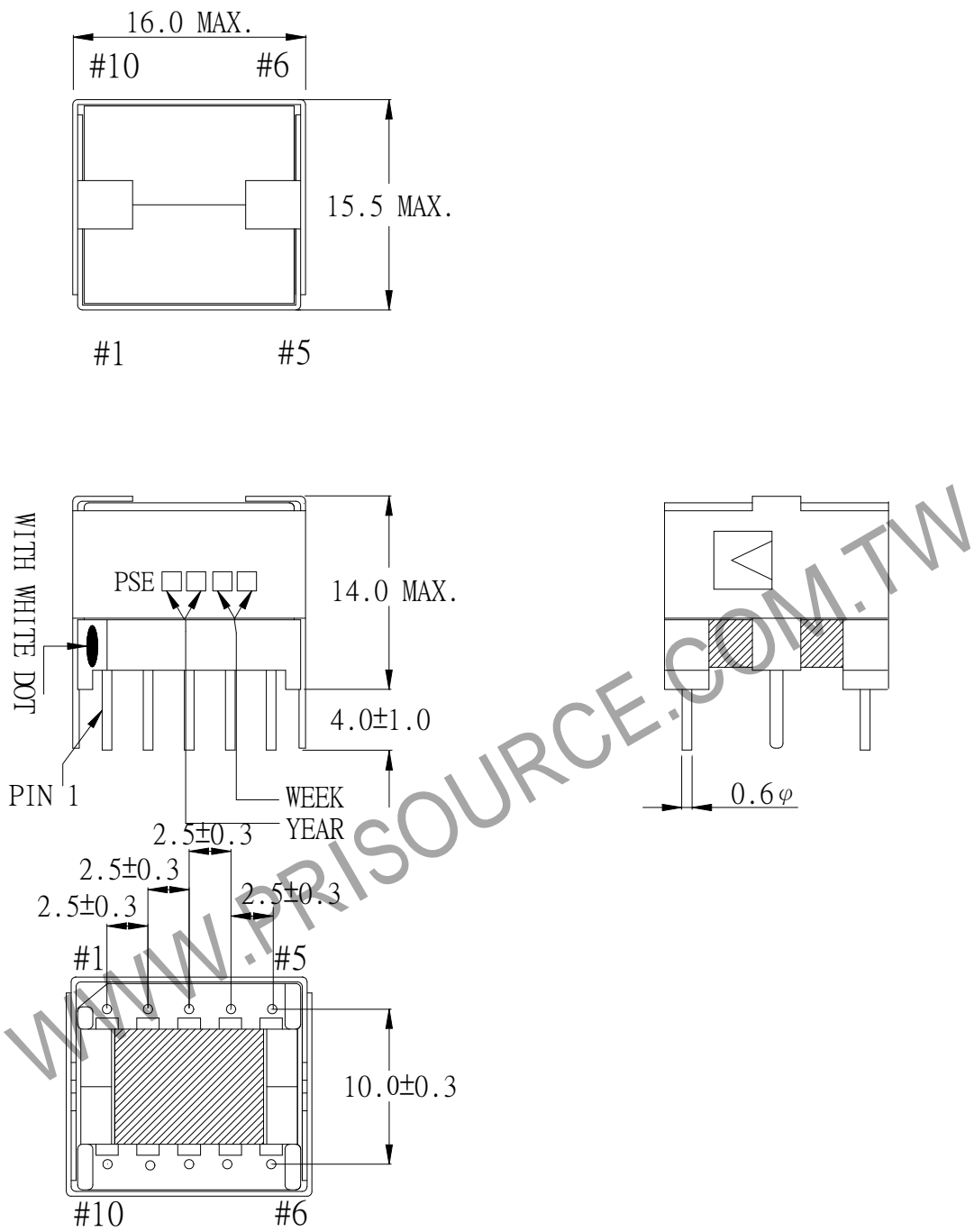


1. MECHANICAL & ASSEMBLY :



UNIT : m/ m

REPORT BY	CHECK BY	APPROVED BY	CUSTOMER :	DATE	
			PART NO : 83P-12010	REV NO.	
			ISSUE NO :	PAGE	4 - 1

2. WINDING CONFIGURATION :

STEP	WINDING	MARGIN TAPE	START-FINISH	COPPER WIRE	TURNS	LAYER TAPE	METHOD
1	W1		1 - 2	0.18 ϕ	55	1T	CLOSE/SPACE
2	W2A		5 - 4	0.18 ϕ	20	1T	SPACE
3	W2B		4 - 3	0.18 ϕ	55	1T	CLOSE/SPACE
4	W3		7 - 6	0.18 ϕ	55	1T	CLOSE/SPACE
5	W4		10 - 9	0.18 ϕ	55	2Ts	CLOSE/SPACE

NOTE:

3. ELECTRICAL CHARACTERISTICS :

PIN NO.	INDUCTANCE 1.0 KHz, 0.3Vrms	LEAKAGE INDUCTANCE KHz, Vrms	VOLTAGE RATIO(V) f= 20KHz	DCR MAX AT 25°C
1 - 2	220.0uH \pm 20%		0.7143Vrms \pm 4%	0.90 Ω
5 - 4	30.0uH \pm 20%		0.2646Vrms \pm 4%	0.40 Ω
4 - 3	220.0uH \pm 20%		0.7352Vrms \pm 3%	1.20 Ω
7 - 6	220.0uH \pm 20%		0.7355Vrms \pm 3%	1.50 Ω
10 - 9	220.0uH \pm 20%		0.7345Vrms \pm 3%	1.40 Ω
5 - 3			INPUT 1 Vrms	

HI-POT TEST : (AT 5 mA, 2 SEC)

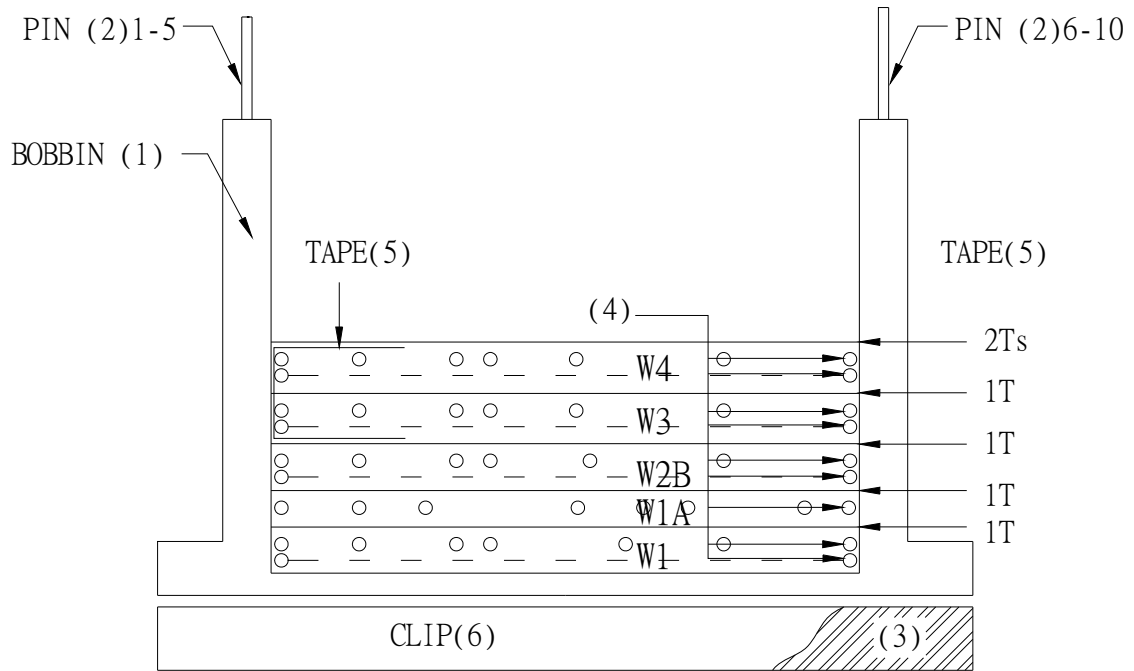
PRI	TO	SEC	1700 VAC
PRI	TO	CORE	600 VAC
SEC	TO	CORE	600 VAC

INSULATION RESISTANCE: (AT DC 500V)

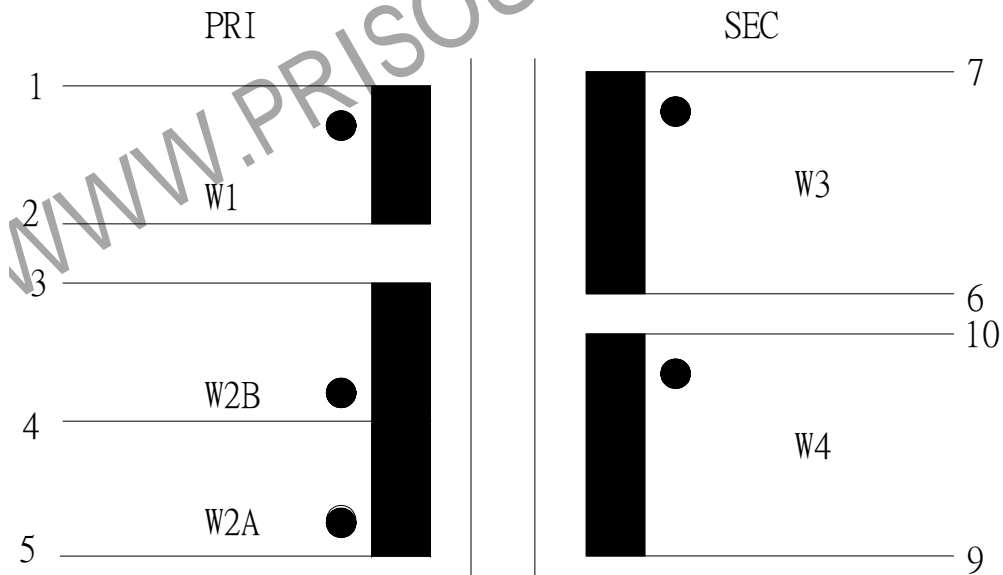
PRI	TO	SEC	100 M Ω MIN.
PRI	TO	CORE	100 M Ω MIN.
SEC	TO	CORE	100 M Ω MIN.

REPORT	BY	CHECK	BY	APPROVED	BY	CUSTOMER :	DATE
						PART NO : 83P-12010	REV NO.
						ISSUE NO :	PAGE 4 - 2

4. WINDING SEQUENCE:



5. SCHEMATIC:



REPORT BY	CHECK BY	APPROVED BY	CUSTOMER :	DATE
			PART NO : 83P-12010	REV NO.
			ISSUE NO :	PAGE
				4 - 3

6. MATERIAL LIST :

NO.	DESCRIPTION	ITEM	MATERIAL	LIST OF SAMPLE	UL NO.	MANUFACTURER
1	BOBBIN	(1)	PHENOLIC (PM9820) Thickness:0.30mm Min.	✓	E41429	SUMITOMO
2	PIN	(2)	TINNED COPPER WIRE φ 0.6	✓		
3	CORE	(3)	FERRITE CORE EP13 TP4	✓		TDG
4	COPPER WIRE	(4)	POLYURETHANE (2UEWF) MW79 TY1700-U155	✓	E197768	HENG YA
5	MYLAR TAPE	(5)	POLYESTER FILM #1318-1 (Y)	✓	E17385	3M
6	CLIP	(6)	C-051	✓		PIN SHINE
7	VARNISH		WP-2952F-2G	✓	E72979	HITACHI

REPORT BY	CHECK BY	APPROVED BY	CUSTOMER :	DATE
			PART NO : 83P-12010	REV NO.
			ISSUE NO :	PAGE 4 - 4