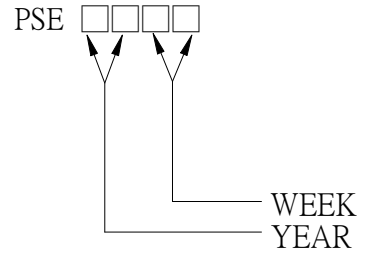
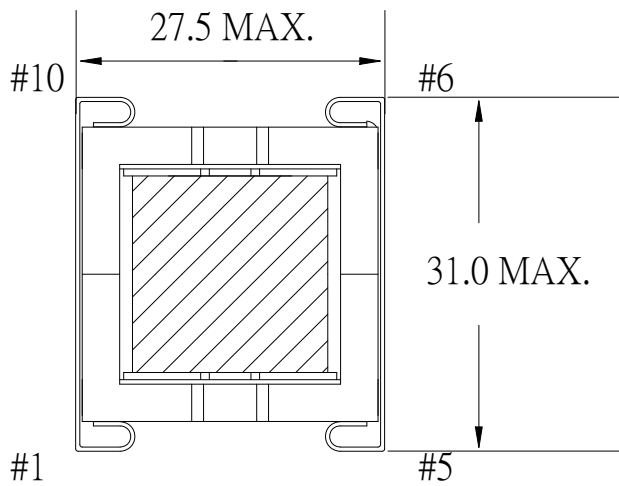
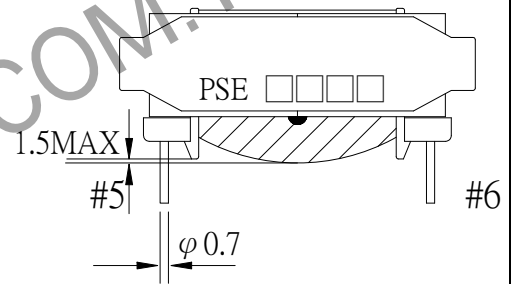
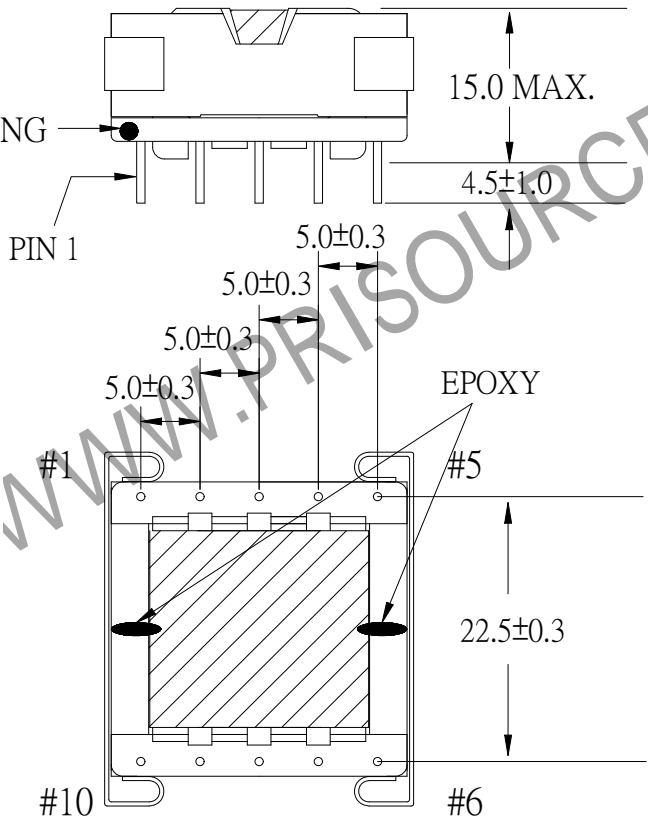


1. MECHANICAL & ASSEMBLY :



PIN 1 MARKING
WHITE DOT



NOTE:

1. EPOXY FIXED BETWEEN
BOTTOM OF CORE
& COIL (TTL: 2 POINTS)
2. COIL CAN BE OVER STAND
OFF 1.5 MAX

UNIT:mm

REPORT BY	CHECK BY	APPROVED BY	CUSTOMER :	DATE	
			PART NO : 83P-11030	REV NO.	
			ISSUE NO :	PAGE	4 - 1

2. WINDING CONFIGURATION :

STEP	WINDING	MARGIN TAPE	START-FINISH	COPPER WIRE	TURNS	LAYER TAPE	TUBE	METHOD
1	W2		4 - 5	φ0.32	45	2Ts		CLOSE
2	W1		1 - 2	φ0.50	30	2Ts		CLOSE
3	W3		7 - 6	φ0.50	10	2Ts		SPACE
4	W4a		10 - 9	φ0.32	28	1T		SPACE
5	W4b		9 - 8	φ0.32	28	2Ts		SPACE

NOTE:

3. ELECTRICAL CHARACTERISTICS :

PIN NO.	INDUCTANCE 1.0KHz, 1.0Vrms	LEAKAGE INDUCTANCE KHz, Vrms	VOLTAGE RATIO(V) F= 20KHz	DCR MAX. AT 25°C
4 - 5	227.0uH ±20%		INPUT 1Vrms	0.45Ω
1 - 2			0.6645 Vrms±3.0%	138.0mΩ
7 - 6			0.2187 Vrms±3.0%	53.0mΩ
10 - 9			0.6121 Vrms±3.0%	0.36Ω
9 - 8			0.6093 Vrms±3.0%	0.38Ω

HI-POT TEST :(AT 5mA , 2 SEC.)

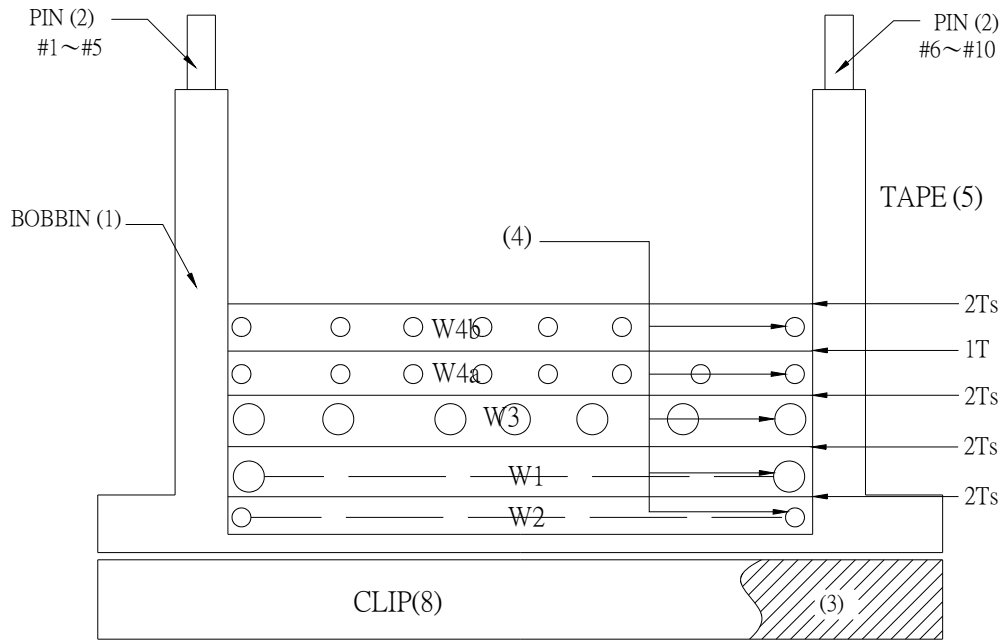
PRI. TO SEC. 1500 VAC
 PRI. TO CORE. 1500 VAC
 SEC. TO CORE. 1500 VAC

INSULATION RESISTANCE:(AT DC 500V)

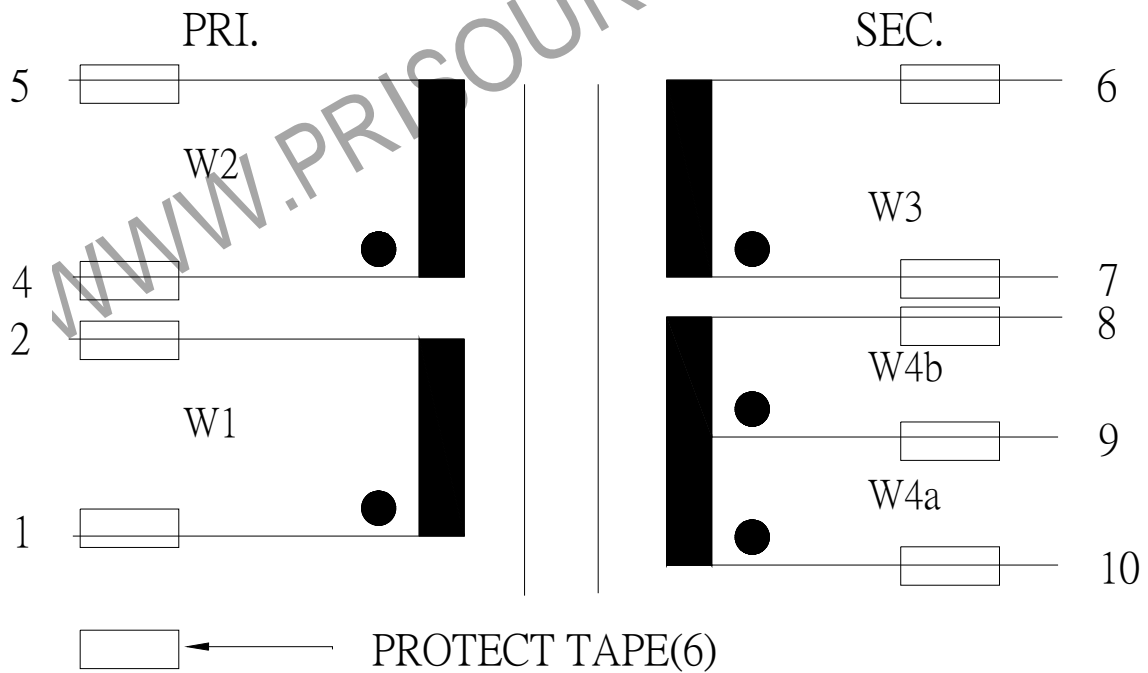
PRI. TO SEC. 100 MΩ MIN.
 PRI. TO CORE. 100 MΩ MIN.
 SEC. TO CORE. 100 MΩ MIN.

REPORT BY	CHECK BY	APPROVED BY	CUSTOMER :	DATE
			PART NO : 83P-11030	REV NO.
			ISSUE NO :	PAGE 4 - 2

4. WINDING SEQUENCE:



5. SCHEMATIC:



REPORT BY	CHECK BY	APPROVED BY	CUSTOMER :	DATE	
			PART NO : 83P-11030	REV NO.	
			ISSUE NO :	PAGE	4 - 3

6 . MATERIAL LIST :

NO	DESCRIPTION	ITEM	MATERIAL	LIST OF SAMPLE	UL NO.	MANUFACTURE
1	BOBBIN	(1)	PHENOLIC (PM9820) Thickness:0.30 mm Min.	√	E41429	SUMITOMO
2	PIN	(2)	TINNED COPPER WIRE φ0.70	√		WELL FORE
3	CORE	(3)	FERRITE CORE EFD25 TP4	√		TDG
4	COPPER WIRE	(4)	POLYURETHANE (2UEW) MW75-C TYPYU-130	√	E197768	HENG YA
5	MYLAR TAPE	(5)	POLYESTER FILM #1318-1 Y	√	E17385	3M
6	PROTECT TAPE	(6)	COMPOSITE FILM #44-A	√	E17385	3M
7	FILM	(7)	MYLAR FILM t0.5×3×9	√		TORAY
8	CLIP	(8)	EFD-25	√		金聖
9	EPOXY		6020H	√	E229633	WELLS
10	VARNISH		WP-2952F-2G	√	E72979	HITACHI

REPORT BY	CHECK BY	APPROVED BY	CUSTOMER :	DATE	
			PART NO : 83P-11030	REV NO.	
			ISSUE NO :	PAGE	4 - 4