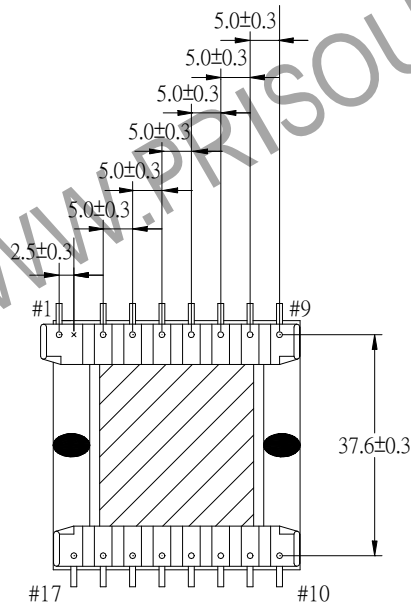
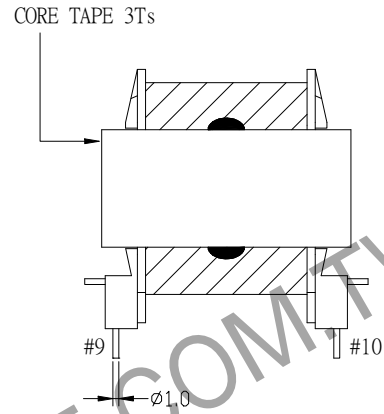
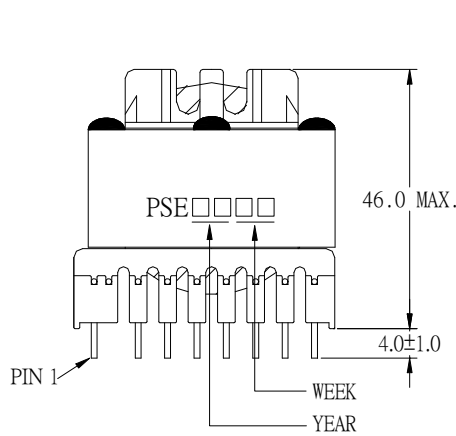
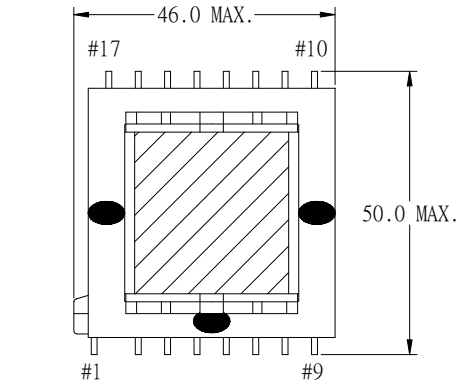


# 1. MECHANICAL & ASSEMBLY :



## NOTE:

1. EPOXY FIXED BETWEEN CORE & CORE (TTL:4 POINTS)
2. EPOXY FIXED TOP OF BOBBIN & CORE.(ONE POINT AT PIN1-9 SIDE).
3. ADHESIVE KE-45W **ON** CORE CENTER LEG(ONE POINT)
4. PIN 2 NO.

UNIT:mm

REPORT BY	CHECK BY	APPROVED BY	CUSTOMER :	DATE	
			PART NO : 82P-13031	REV NO.	
			ISSUE NO :	PAGE	4 - 1

## 2. WINDING CONFIGURATION :

STEP	WINDING	MARGIN TAPE	START-FINISH	COPPER WIRE	URNS	LAYER TAPE	TUBE	METHOD
1	P	3.0mm/3.0mm×4Ts	4 - 6	0.07φ/160	14	3Ts	#12	CLOSE
2	S1	3.0mm/~×10Ts	10 - 12	0.07φ/378	6	1T	#10	BIFILAR,
3	S2	~/3.0mm×10Ts	15 - 17	0.07φ/378	6		#10	CLOSE
4	S3	3.0mm/3.0mm×1T	14 - 16	0.20φ	3	3Ts	#24	SPACE

NOTE:

## 3. ELECTRICAL CHARACTERISTICS :

PIN NO.	INDUCTANCE 10 KHz, 1.0Vrms	LEAKAGE INDUCTANCE 100KHz, 0.1Vrms	VOLTAGE RATIO(V) f= 20KHz INPUT 1Vrms	DCR MAX. AT 25°C
4 - 6	1.02mH±20.0%	3.3uH MAX		42.0 mΩ
10 - 12		SHORT	0.4278V±4.0%	12.0 mΩ
15 - 17		SHORT	0.4278V±4.0%	12.0 mΩ
14 - 16		SHORT	0.2136V±4.0%	0.25 Ω

HI-POT TEST :(AT 2 mA, 1SEC.)

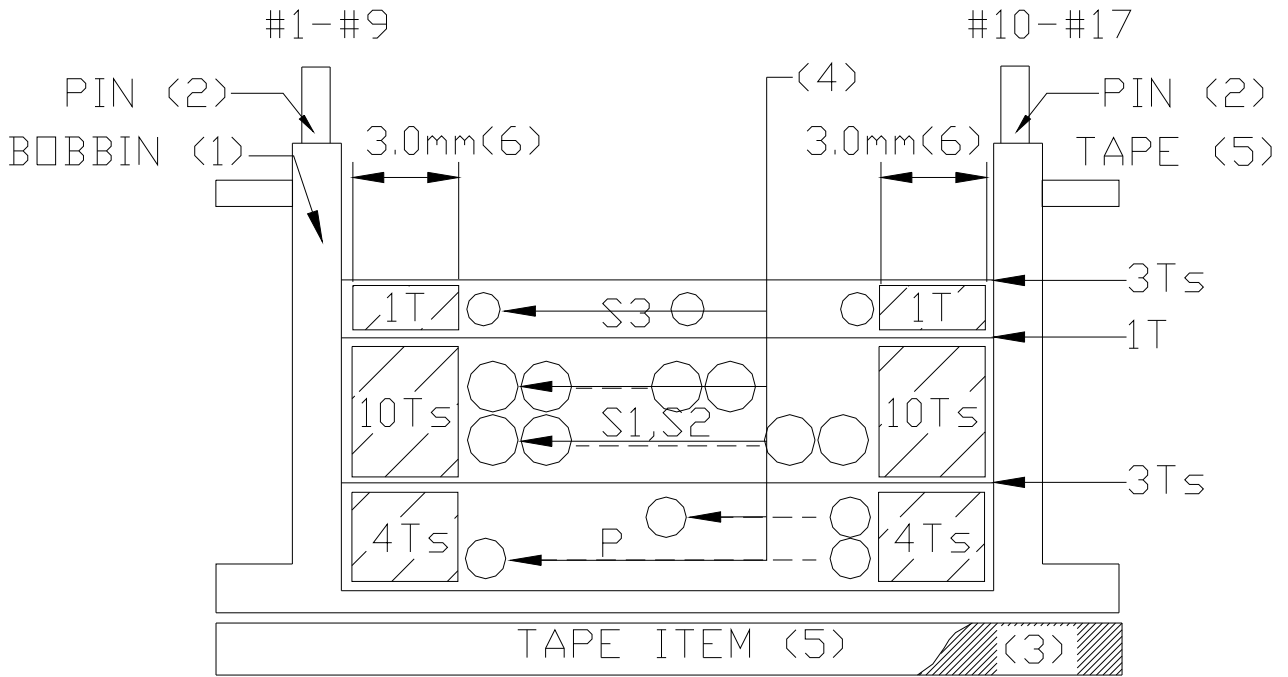
PRI. TO SEC. 4000 VAC  
 SEC TO CORE. 4000 VAC  
 PRI TO SEC. 350 VAC

INSULATION RESISTANCE:(AT DC 500V)

PRI. TO SEC. 100 MΩ MIN.  
 SEC TO CORE. 100 MΩ MIN.

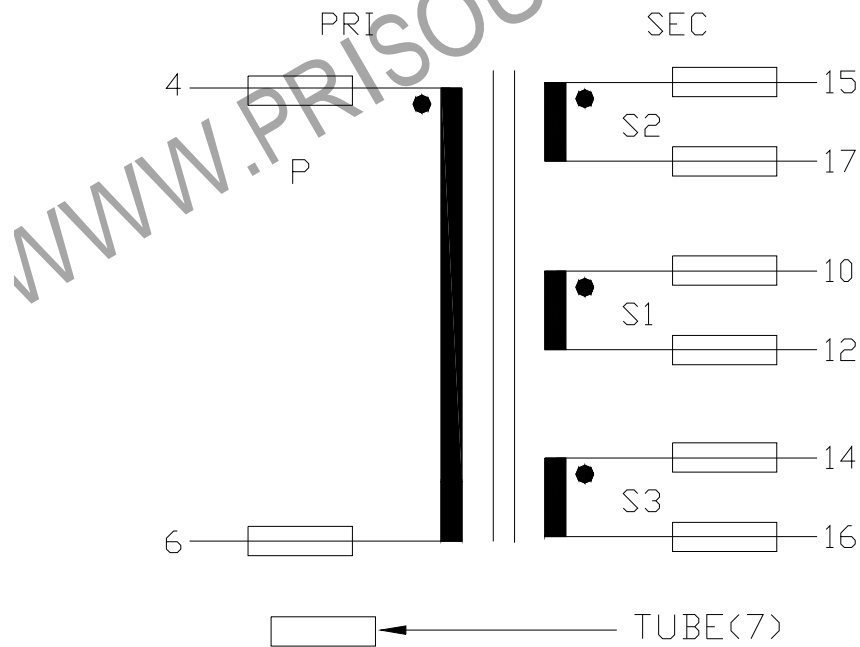
REPORT BY	CHECK BY	APPROVED BY	CUSTOMER :	DATE	
			PART NO : 82P-13031	REV NO.	
			ISSUE NO :	PAGE	4 - 2

#### 4. WINDING SEQUENCE:



P WINDING FROM PIN 1-9 SIDE  
 S1,S2,S3 WINDING FROM PIN 10-17SIDE

#### 5. SCHEMATIC:



REPORT BY	CHECK BY	APPROVED BY	CUSTOMER :	DATE	
			PART NO : 82P-13031	REV NO.	
			ISSUE NO :	PAGE	4 - 3

6. MATERIAL LIST :

NO.	DESCRIPTION	ITEM	MATERIAL	LIST OF SAMPLE	UL NO.	MANUFACTURER
1	BOBBIN	(1)	PET FR530 Thickness:0.40mm Min.	✓	E41938	E I DUPONT
2	PIN	(2)	TINNED C.P WIRE Φ1.0	✓		WELL FORE
3	CORE	(3)	FERRITE CORE EE42/20 TP4A	✓		TDG
4	COPPER WIRE	(4)	POLYURETHANE(1UEWF) MW79 TY1700-U155	✓	E197768	HENG YA
5	MYLAR TAPE	(5)	POLYIMIDE FILM #1318-1 (Y)	✓	E17385	3M
6	MARGIN TAPE	(6)	COMPOSITE FILM #44T-A	✓	E17385	3M
7	TUBE	(7)	TEFLON TUBE TFL	✓	E156256	GREAT HOLDING
8	EPOXY		6020H KE-45W	✓ ✓	E229633 E48923	WELLS SHIN ETSU
9	VARNISH		WP-2952F-2G	✓	E72979	HITACHI

REPORT BY	CHECK BY	APPROVED BY	CUSTOMER :	DATE	
			PART NO : 82P-13031	REV NO.	
			ISSUE NO :	PAGE	4 - 4