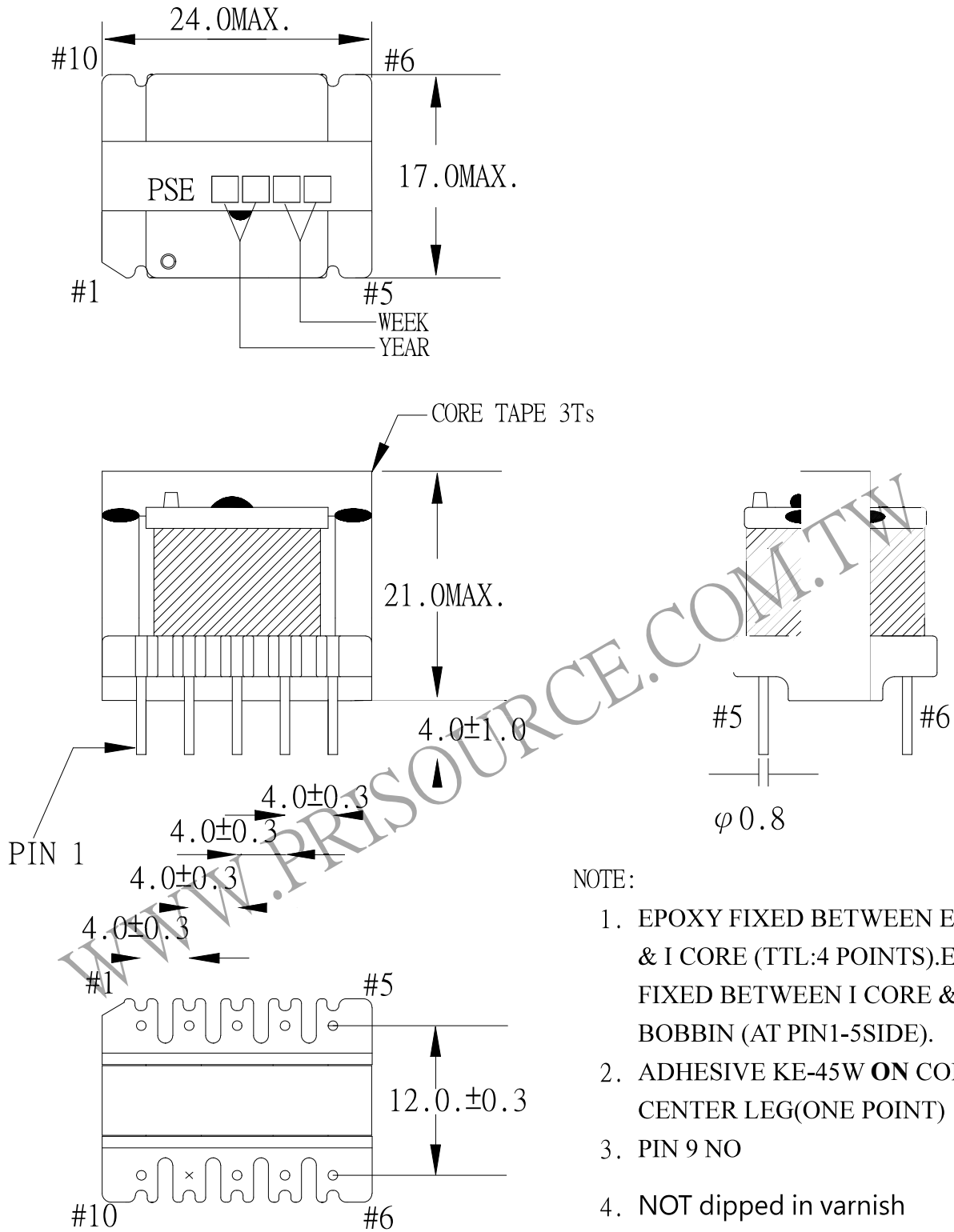


1. MECHANICAL & ASSEMBLY :



UNIT:m/m

REPORT BY	CHECK BY	APPROVED BY	CUSTOMER :	DATE	
			PART NO : 82P-13018	REV NO.	
			ISSUE NO :	PAGE	4 - 1

2. WINDING CONFIGURATION:

STEP	WINDING	MARGIN TAPE	START-FINIS	COPPER WIRE	TURNS	LAYER TAPE	TUBE	METHOD
1	P1		2 - 1	0.13φ	90	1T	#26	CLOSE
2	P2		3 - 4	0.13φ	21	1T		SPACE
3	P3		4 - 5	0.13φ	15	2Ts		SPACE
4	S1		10 - 8	TEX-E 0.20φ	17	1T		SPACE
5	S2		8 - 7	TEX-E 0.20φ	18	1T		SPACE
6	S3		7 - 6	TEX-E 0.20φ	18	2Ts		SPACE

NOTE:

3. ELECTRICAL CHARACTERISTICS:

PIN NO.	INDUCTANCE 10KHz, 1.0Vrms	LEAKAGE INDUCTANCE 100KHz, 0.1Vrms	VOLTAGE RATIO(V) F= 20KHz	DCR MAX. AT 25°C
2 - 1	2.1mH ±20.0%	48.0uH ±25.0%	INPUT 1Vrms	4.70 Ω
3 - 4			0.2339 Vrms±4.0%	1.22 Ω
4 - 5			0.1665 Vrms±4.0%	0.87 Ω
7 - 6		SHORT	0.2002 Vrms±4.0%	0.52 Ω
8 - 7		SHORT	0.2005 Vrms±4.0%	0.48 Ω
10 - 8		SHORT	0.1898 Vrms±4.0%	0.43 Ω

HI-POT TEST :(AT 1mA, 1 SEC.)

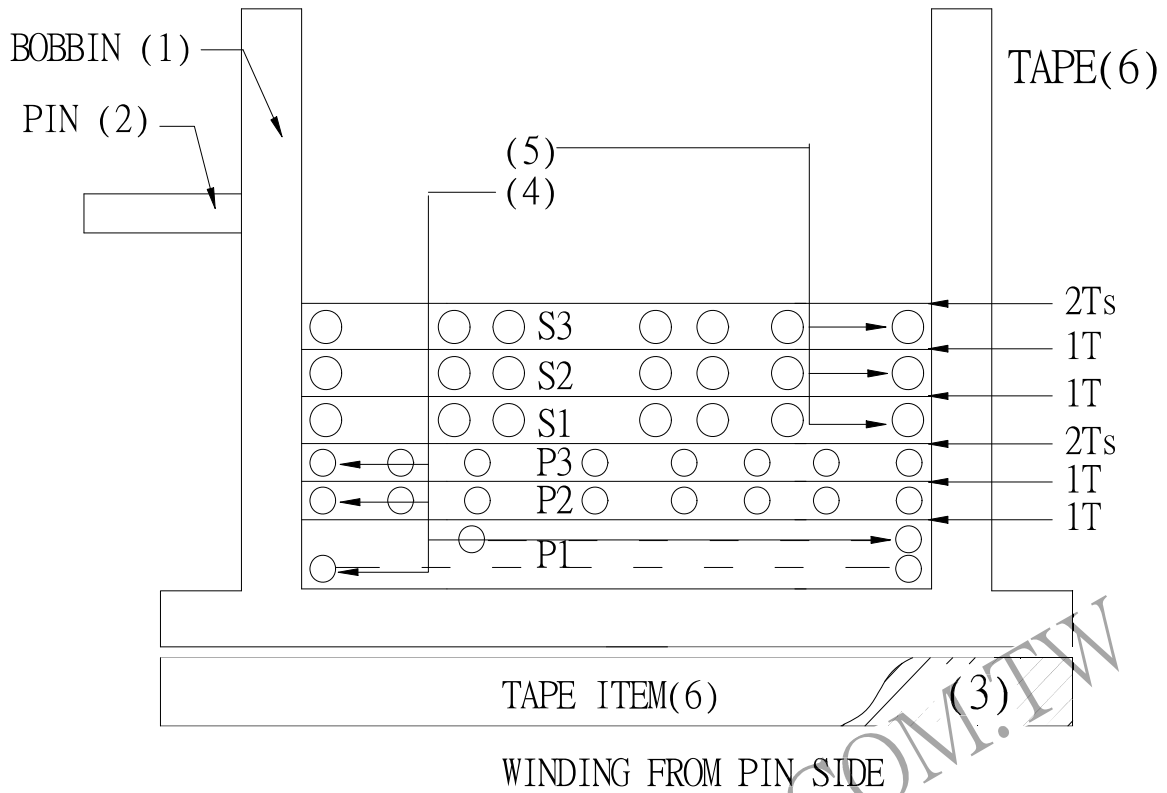
PRI. TO SEC. 3000 VAC
 PRI TO PRI 350 VAC
 SEC TO CORE 2400 VAC

INSULATION RESISTANCE:(AT DC 500V)

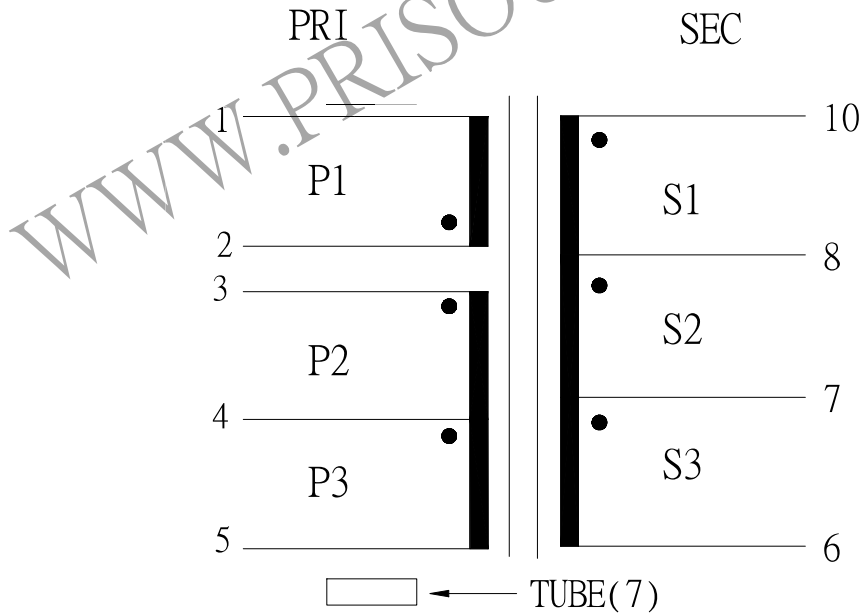
PRI. TO SEC. 100 MΩ MIN.
 SEC. TO CORE 100 MΩ MIN.

REPORT BY	CHECK BY	APPROVED BY	CUSTOMER :	DATE
			PART NO : 82P-13018	REV NO.
			ISSUE NO :	PAGE 4 - 2

4. WINDING SEQUENCE:



5. SCHEMATIC:



REPORT BY	CHECK BY	APPROVED BY	CUSTOMER :	DATE	
			PART NO : 82P-13018	REV NO.	
			ISSUE NO :	PAGE	4 - 3