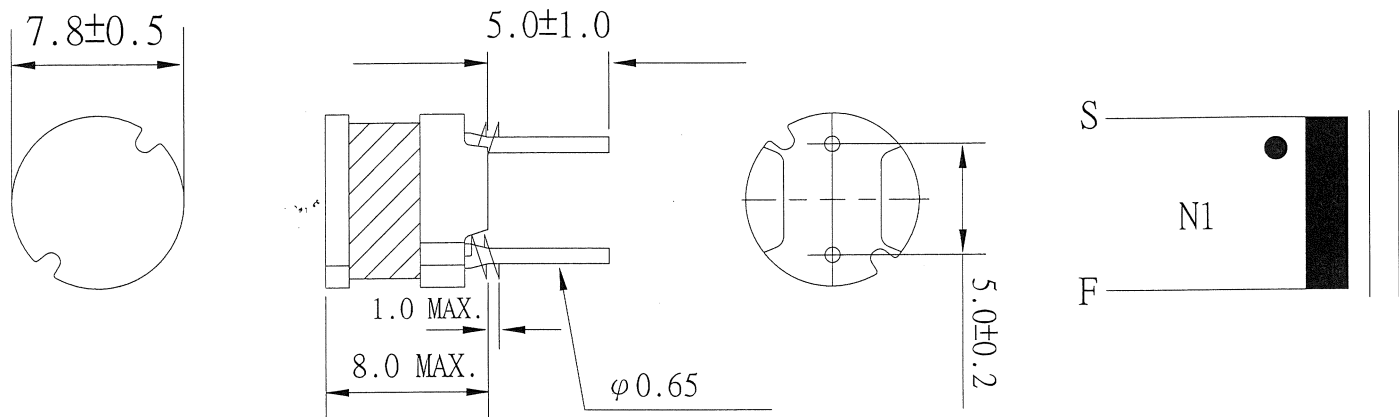


1. MECHANICAL & ASSEMBLY :



UNIT: mm

2. WINDING CONFIGURATION:

STEP	WINDING	MARGIN TAPE	START-FINISH	COPPER WIRE	TURN	LAYER TAPE	METHOD
1	N1	~	S - F	0.40 ϕ	23.5Ts REF	2Ts	CLOSE

NOTE:

3. ELECTRICAL CHARACTERISTICS :

PIN NO.	INDUCTANCE 10 KHz, 0.3 V	DC SATURATION 10KHz, 0.3Vrms+DC 2.0A	VOLTAGE RATIO(V) f= KHz	DCR(MAX.) AT 25°C
S - F	22.0uH \pm 10%	22.0uH \pm 10%		60.0 m Ω