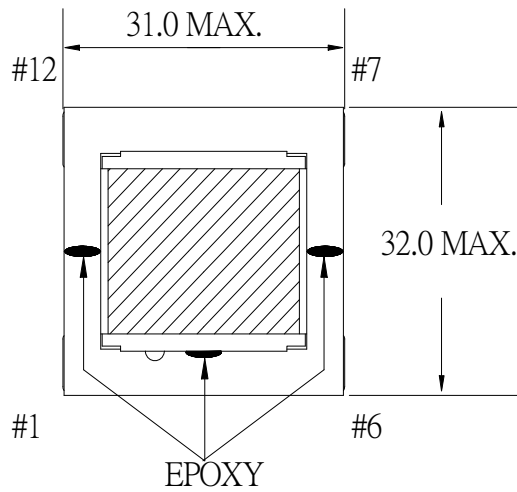
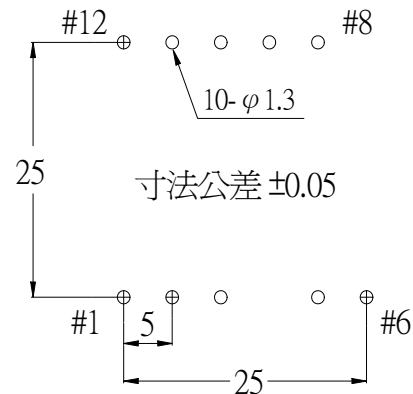
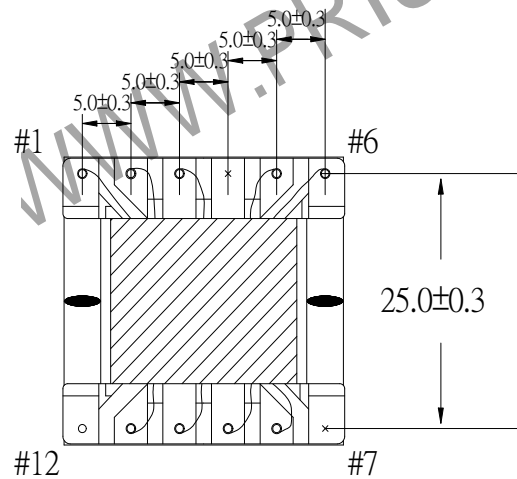
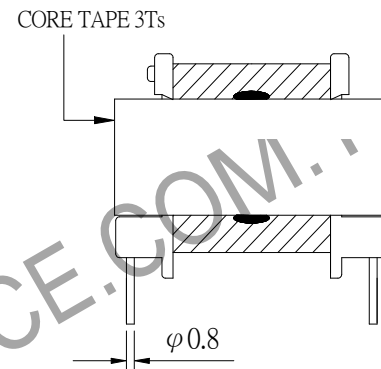
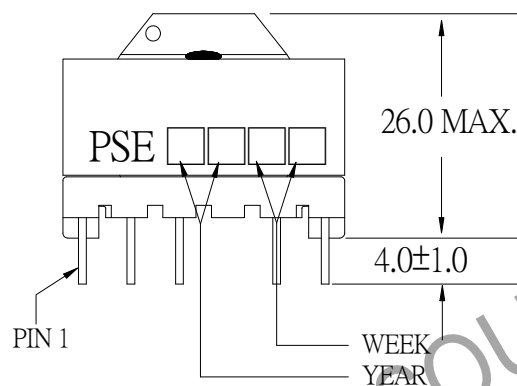


1. MECHANICAL & ASSEMBLY :



NOTE:

1. EPOXY FIXED BETWEEN CORE & CORE (TTL:4 POINTS). EPOXY FIXED TOP OF BOBBIN & CORE.(ONE POINT AT PIN1-6 SIDE)
2. PIN 4,7 NO



UNIT : m/ m

REPORT BY	CHECK BY	APPROVED BY	CUSTOMER :	DAE	
			PART NO : 81P-16018	REV NO.	
			ISSUE NO :	PAGE	4 - 1

2. WINDING CONFIGURATION :

STEP	WINDING	MARGIN TAPE	START-FINISH	COPPER WIRE	TURNS	LAYER TAPE	TUBE	METHOD
1	P1	1.5mm/1.5mm×2Ts	1 - 2	TEX-E0.20φ	60	1T/3Ts		CLOSE
2	S1	1.5mm/1.5mm×2Ts	9 - 8	0.45φ×2	25	1T/1T	φ1.0	CLOSE
3	S2	1.5mm/1.5mm×1T	11 - 10	0.45φ	25	3Ts	φ0.8	CLOSE
4	P2	1.5mm/1.5mm×1T	5 - 6	TEX-E0.20φ	6	2Ts		SPACE
5	P1'	1.5mm/1.5mm×2Ts	2 - 3	TEX-E0.20φ	60	1T/1T/3Ts	φ0.8	CLOSE

NOTE:

3. ELECTRICAL CHARACTERISTICS :

PIN NO.	INDUCTANCE 1.0 KHz, 1.0Vrms	LEAKAGE INDUCTANCE KHz, mVrms	VOLTAGE RATIO(V) f= 20KHz INPUT 1V	DCR MAX AT 25°C
1 - 3	5.0mH ±7%			5.0 Ω
9 - 8			0.2069 Vrms±4.0%	85.0 mΩ
11 - 10			0.2081 Vrms±4.0%	180.0 mΩ
5 - 6			0.0501 Vrms±5.0%	245.0 mΩ
2 - 3			0.5048 Vrms±3.0%	2.5 Ω

HI -POT TEST : (AT 1 mA, 2 SEC.)

PRI	TO	SEC	4000VAC
PRI	TO	CORE	4000VAC

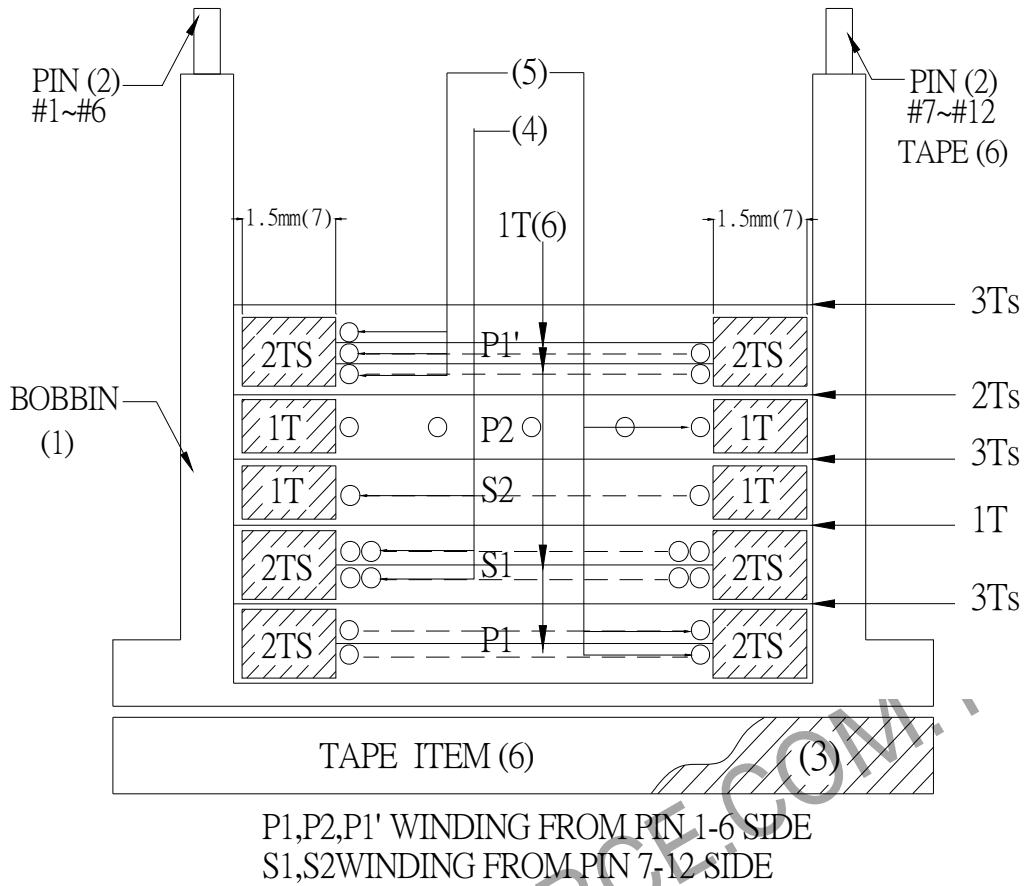
INSULATION RESISTANCE: (AT DC 500V)

PRI	TO	SEC	100 MΩ MIN.
PRI	TO	CORE	100 MΩ MIN.

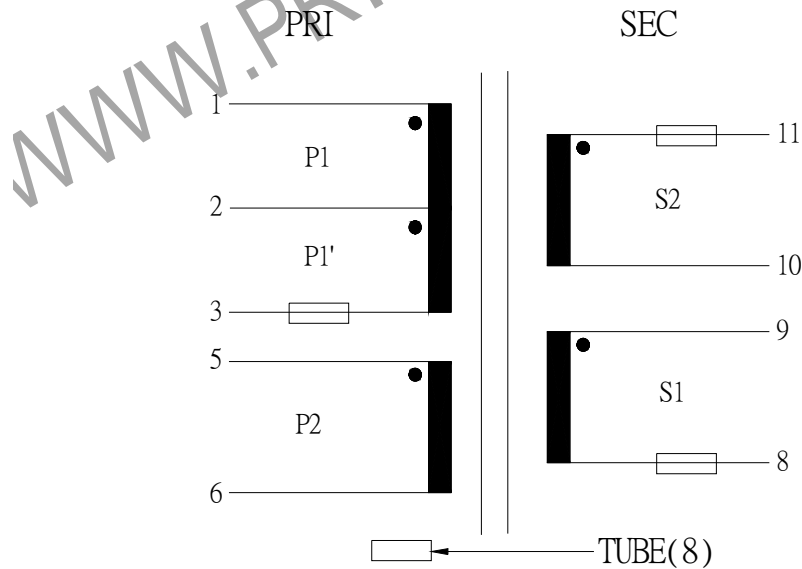
LY(1 - 3) 1200Vo

REPORT BY	CHECK BY	APPROVED BY	CUSTOMER :	DAE
			PART NO : 81P-16018	REV NO. NO.
			ISSUE NO :	PAGE
				4 - 2

4. WINDING SEQUENCE:



5. SCHEMATIC:



REPORT BY	CHECK BY	APPROVED BY	CUSTOMER :	DAE
			PART NO : 81P-16018	REV NO. NO.
			ISSUE NO :	PAGE
				4 - 3

6 . MATERIALS LIST :

NO	DESCRIPTION	ITEM	MATERIAL	LIST OF SAMPLE	UL NO.	MANUFACTURE
1	BOBBIN	(1)	PHENOLIC (PM9820) Thickness:0.71 mm Min.	√	E41429	SUMITOMO
2	PIN	(2)	TINNED C.P WIRE 0.8 φ	√		WELL FORE
3	CORE	(3)	FERRITE CORE EER28A TP4	√		TDG
4	COPPER WIRE	(4)	POLYURETHANE (1UEW) TYPU-130 MW75-C	√	E197768	HENG YA
5	TRIPLE WIRE	(5)	TEX-E	√	E206440	FURUKAWA
6	MYLAR TAPE	(6)	POLYESTER FILM #1318-1(Y)	√	E17385	3M
7	MARGIN TAPE	(7)	COMPOSITE FIM #44T-A	√	E17385	3M
8	TUBE	(8)	SILICON TUBE RSU-1	√	E67922	NISSEI
9	EPOXY		6020H	√	E229633	WELLS
10	VARNISH		TVB2180T	√	E83702	KYOCERA

REPORT BY	CHECK BY	APPROVED BY	CUSTOMER :	DAE	
			PART NO : 81P-16018	REV NO.	
			ISSUE NO :	PAGE	4 - 4