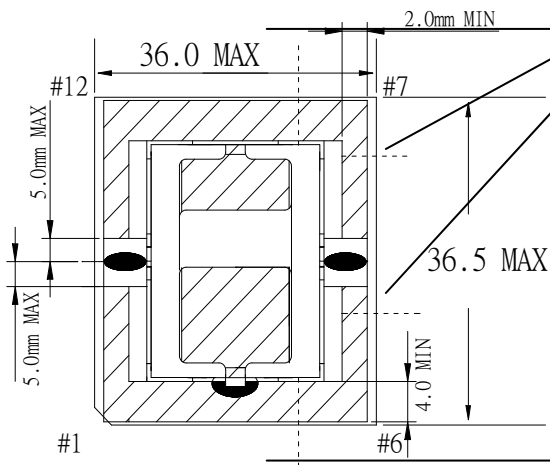
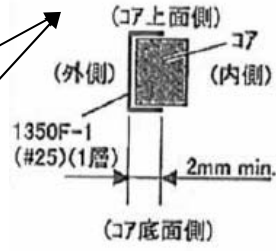


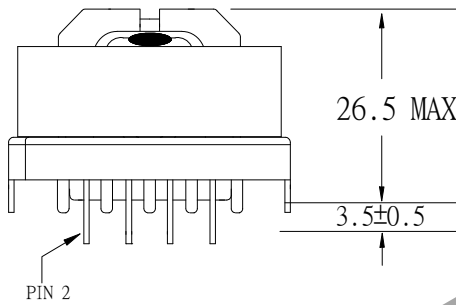
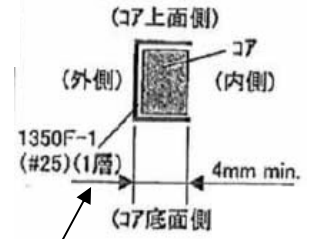
1. MECHANICAL & ASSEMBLY :



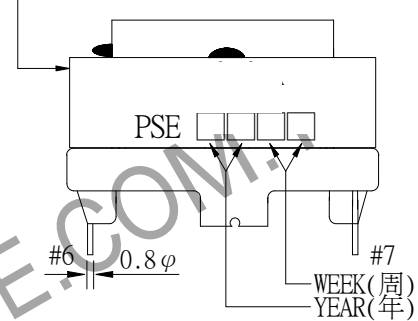
<断面図>



<断面図>



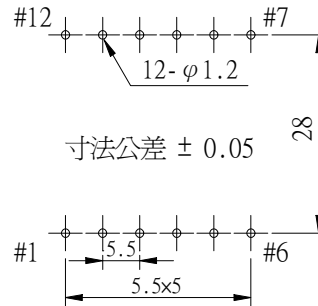
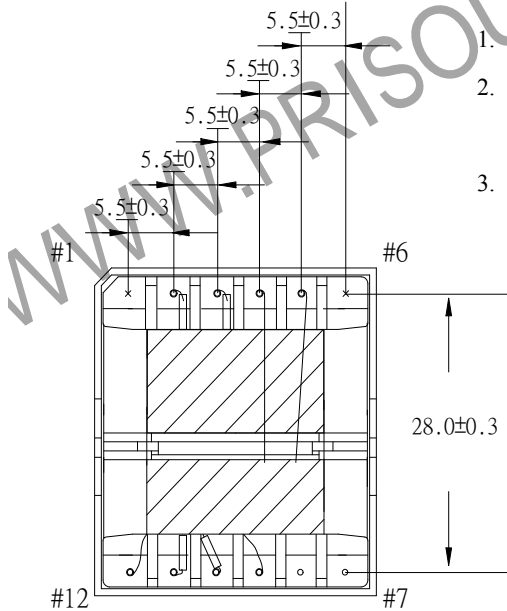
CORE TAPE 3Ts



NOTE:

1. EPOXY FIXED BETWEEN CORE & CORE (TTL:2 POINTS)
2. EPOXY FIXED TOP OF BOBBIN & CORE & CASE.(ONE POINT AT PIN1-6 SIDE).
3. PIN 1,6 NO.

「この治具に容易に挿入出来る事」



寸法公差 ± 0.05

UNIT: m/ m

REPORT BY	CHECK BY	APPROVED BY	CUSTOMER :	DATE
			PART NO : 81P-16009	REV NO.
			ISSUE NO :	PAGE 4 - 1

2. WINDING CONFIGURATION:

STEP	WINDING	MARGIN TAPE	START-FINISH	COPPER WIRE	TURNS	LAYER TAPE	TUBE	METHOD
1	P1		2 - 3	0.10 ϕ /27C	35	2Ts	#18/#18	CLOSE
2	S1		10 - 12	0.10 ϕ /50C	8	1T	#16/~	BIFILAR,
3	S2		11 - 9	0.10 ϕ /50C	8		#16/~	CLOSE
4	P2		5 - 4	TEX-E 0.3 ϕ	3	3Ts		CLOSE

NOTE:1.S1,S2:0.10 ϕ /50C(45Ts/m 以上)

3. ELECTRICAL CHARACTERISTICS:

PIN NO.	INDUCTANCE 1.0KHz, 1.0Vrms	LEAKAGE INDUCTANCE 1KHZ, 1V	VOLTAGE RATIO(V) f= 20KHz	DCR (MAX) AT 25°C
2 - 3	590.0uH+10%-15%	80.0uH \pm 10.0%	INPUT 1Vrms	180.0m Ω
10 - 12		SHORT	0.2165V \pm 4.0%	24.0 m Ω
11 - 9		SHORT	0.2165V \pm 4.0%	23.0 m Ω
5 - 4			0.0811V \pm 5.0%	70.0 m Ω

HI-POT TEST : (AT 1 mA, 2 SEC)

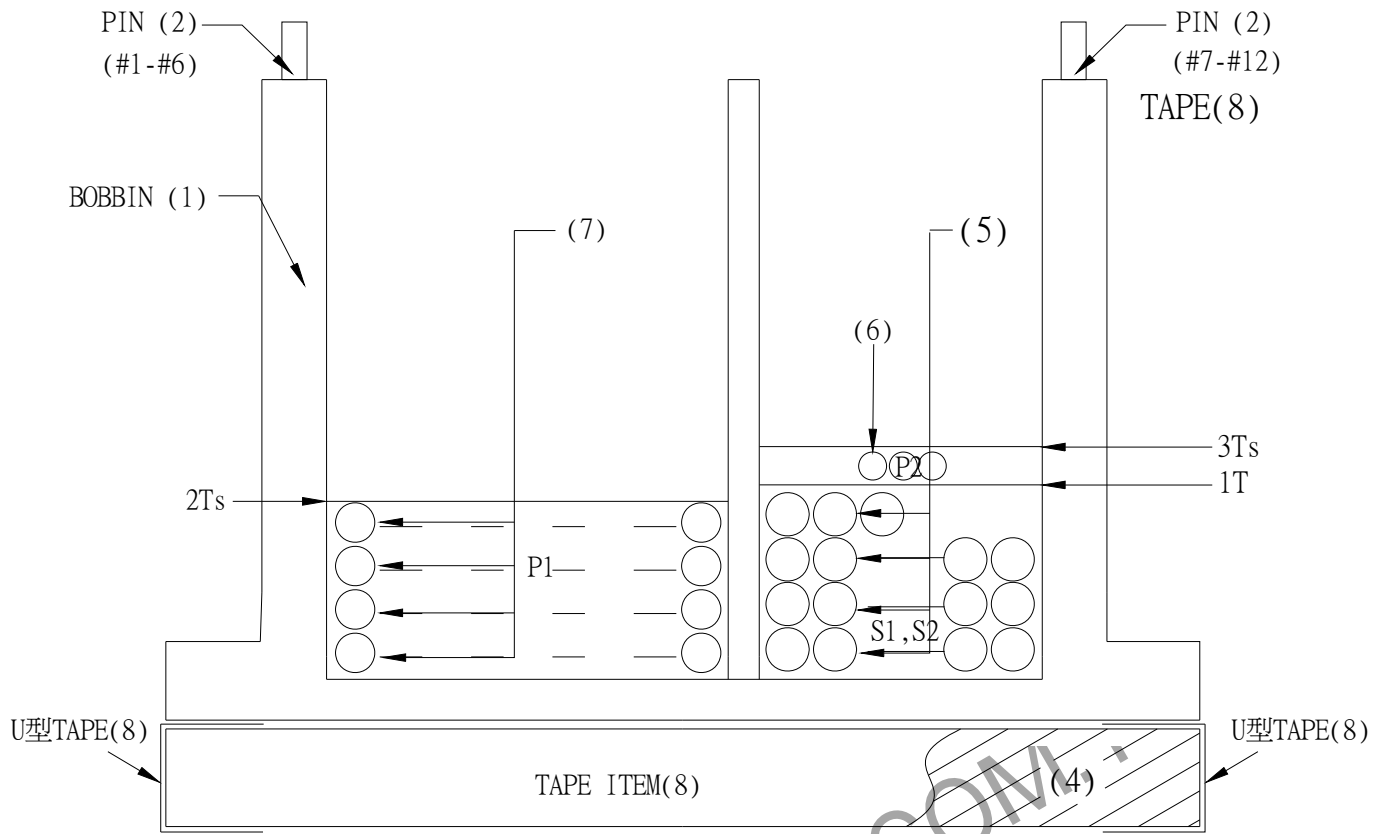
PRI. TO SEC. 4800 VAC
 PRI. TO CORE. 4800 VAC
 SEC. TO CORE. 720 VAC

INSULATION RESISTANCE: (AT DC500V)

PRI. TO SEC. 100 M Ω MIN.
 PRI. TO CORE. 100 M Ω MIN.
 SEC. TO CORE. 100 M Ω MIN.

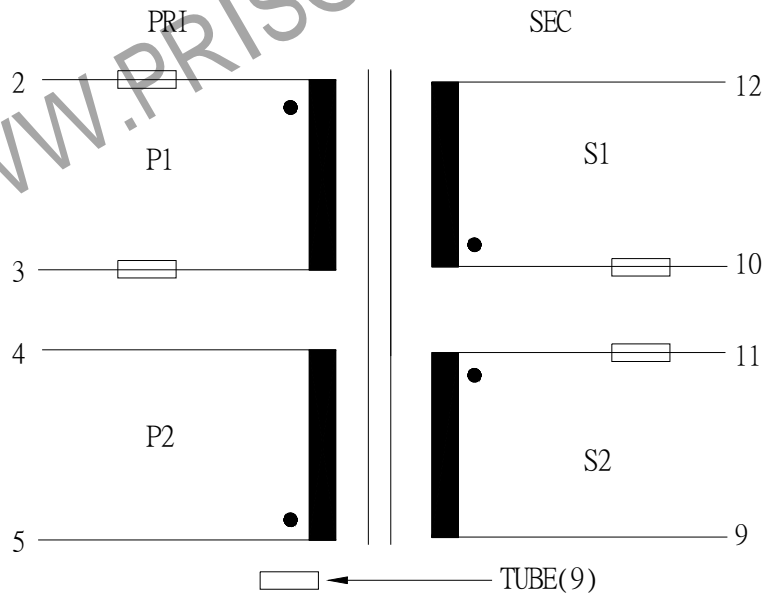
REPORT BY	CHECK BY	APPROVED BY	CUSTOMER :	DATE	
			PART NO : 81P-16009	REV NO.	
			ISSUE NO :	PAGE	4 - 2

4. WINDING SEQUENCE:



P1 WINDING FROM PIN1-6 SIDE
 S1,S2,P2 WINDING FROM PIN7-12 SIDE
 S1&S2 is bifilar winding with 3 layer 8 Turns

5. SCHEMATIC:



REPORT BY	CHECK BY	APPROVED BY	CUSTOMER :	DATE	
			PART NO : 81P-16009	REV NO.	
			ISSUE NO :	PAGE	4 - 3

6. MATERIAL LIST :

NO.	DESCRIPTION	ITEM	MATERIAL	LIST OF SAMPLE	UL NO.	MANUFACTURER
1	BOBBIN	(1)	PHENOLIC(PM9820) Thickness:0.71mm Min.	✓	E41429	SUMITOMO
2	CASE	(2)	PET FR530 Thickness:0.75mm Min.	✓	E41938	E I DUPONT
3	PIN	(3)	TINNED C.P WIRE φ 0.8	✓		WELL FORE
4	CORE	(4)	FERRITE CORE ETD34 TP4A	✓		TDG
5	COPPER WIRE	(5)	POLYURETHANE(1UEW) TYPU-130 MW75C	✓	E197768	HENG YA
6	TRIPLE WIRE	(6)	TEX-E	✓	E206440	FURUKAWA
		(7)	TIW-2LZ	✓	E166483	TOTOKU
7	MYLAR TAPE	(8)	POLYESTER FILM #1350F-1 Y	✓	E17385	3M
8	PROTECT TAPE		COMPOSITE FILM #44	✓	E17385	3M
	TUBE	(9)	TEFLON TUBE TFL	✓	E156256	GREAT HOLDING
9	EPOXY		6020H	✓	E229633	WELLS
10	VARNISH		TVB2180T	✓	E83702	KYOCERA

REPORT BY	CHECK BY	APPROVED BY	CUSTOMER :	DATE	
			PART NO : 81P-16009	REV NO.	
			ISSUE NO :	PAGE	4 - 4