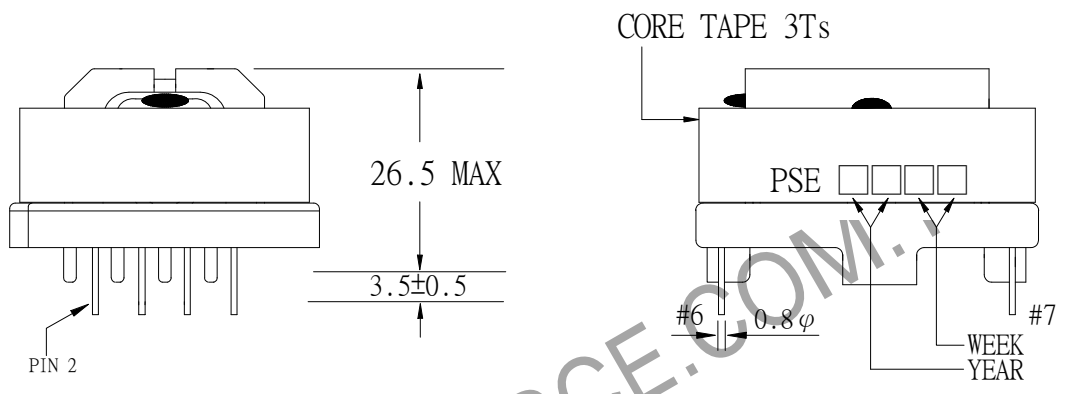
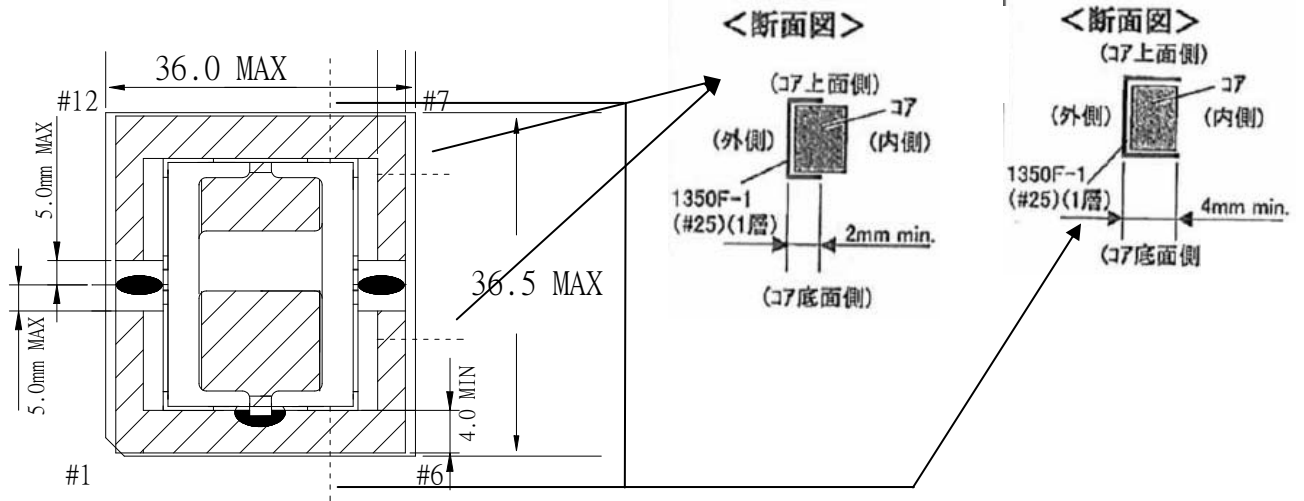


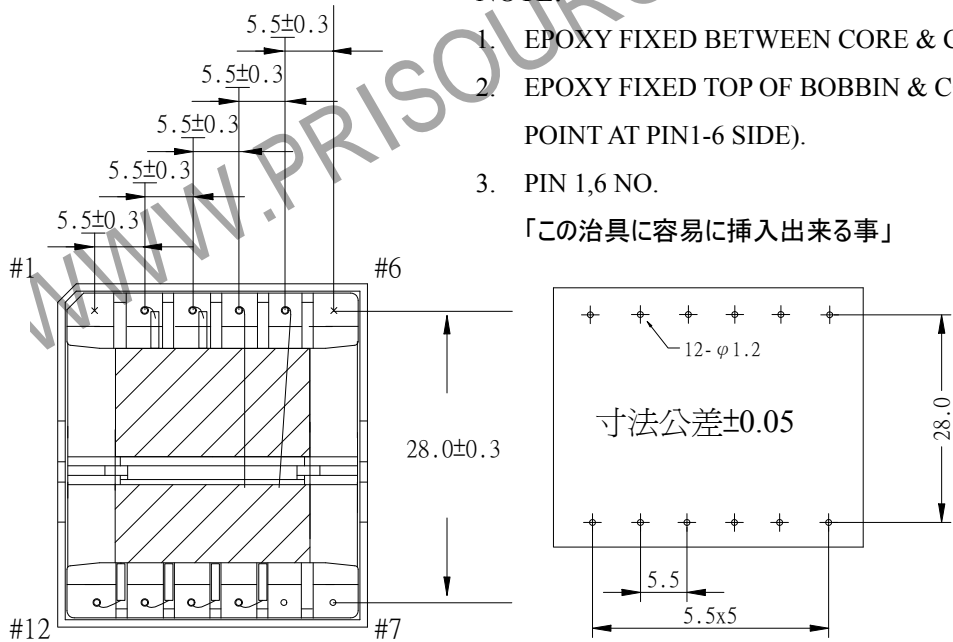
# 1. MECHANICAL & ASSEMBLY :



## NOTE:

1. EPOXY FIXED BETWEEN CORE & CORE (TTL:2 POINTS)
2. EPOXY FIXED TOP OF BOBBIN & CORE & CASE.(ONE POINT AT PIN1-6 SIDE).
3. PIN 1,6 NO.

「この治具に容易に挿入出来る事」



UNIT:m/m

REPORT BY	CHECK BY	APPROVED BY	CUSTOMER :	DATE
			PART NO : 81P-16001	REV NO.
			ISSUE NO :	PAGE 4 - 1

## 2. WINDING CONFIGURATION :

STEP	WINDING	MARGIN TAPE	START-FINISH	COPPER WIRE	TURNS	LAYER TAPE	TUBE	METHOD
1	P1		2 - 3	TIW-2LZ 0.10φ/17C	43	2Ts	#18	CLOSE
2	S1		10 - 12	0.10φ/150C	3	1Ts	#10	BIFILAR, CLOSE
3	S2		11 - 9	0.10φ/150C			#10	
4	P2		5 - 4	TEX-E 0.3φ	3	3Ts		CLOSE

### NOTE:

S1,S2 WIRE 1UEW φ 0.1/150C : 1st(0.1\*50C)14 絞以上/呎

2nd(1st\*3C)11 絞以上/呎

## 3. ELECTRICAL CHARACTERISTICS :

PIN NO.	INDUCTANCE 1.0KHz, 1.0Vrms	LEAKAGE INDUCTANCE 1KHZ, 1V	VOLTAGE RATIO(V) f= 20KHz	DCR (MAX) AT 25°C
2 - 3	600uH±10%	120uH±15%	INPUT 1 Vrms	0.35 Ω
10 - 12		SHORT	0.0648V±5%	4.5 mΩ
11 - 9		SHORT	0.0648V±5%	4.0 mΩ
5 - 4			0.0650V±5%	80.0 mΩ

HI-POT TEST : (AT 1 mA, 2 SEC)

PRI. TO SEC. 4800 VAC

PRI. TO CORE. 4800 VAC

SEC. TO CORE. 720 VAC

INSULATION RESISTANCE: (AT DC500V)

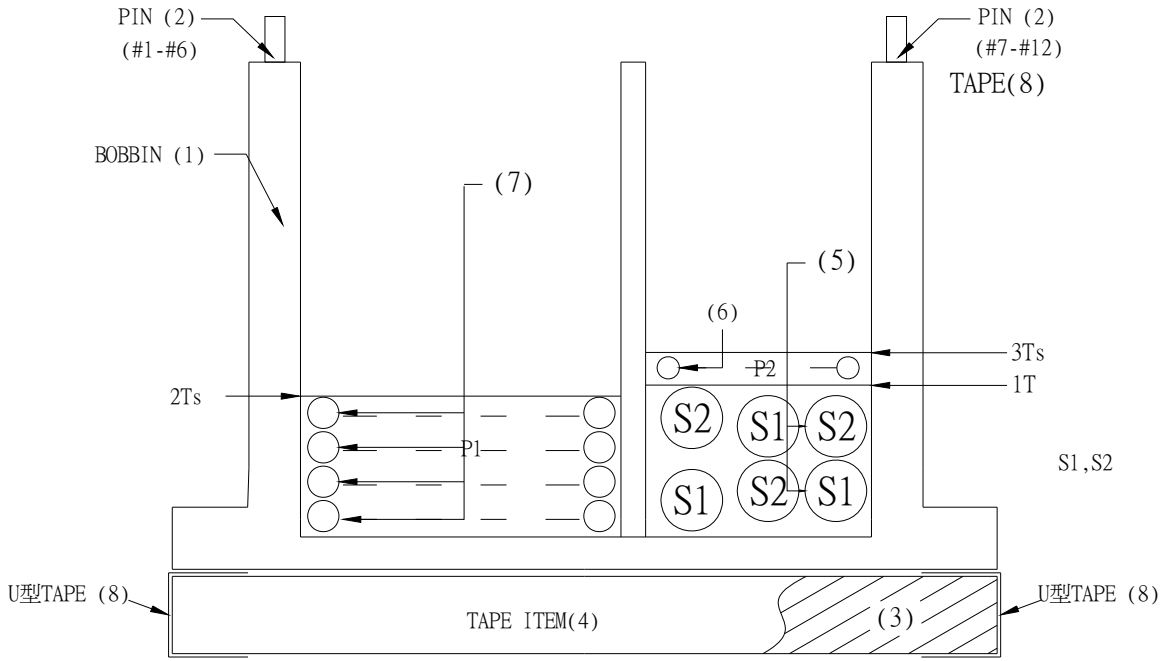
PRI. TO SEC. 100 MΩ MIN.

PRI. TO CORE. 100 MΩ MIN.

SEC. TO CORE. 100 MΩ MIN.

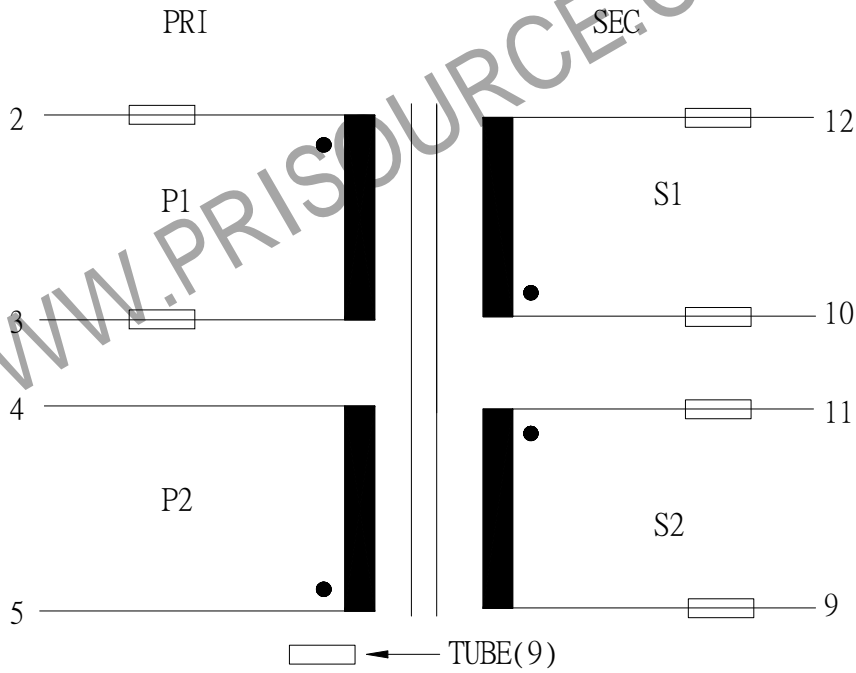
REPORT BY	CHECK BY	APPROVED BY	CUSTOMER :	DATE
			PART NO : 81P-16001	REV NO.
			ISSUE NO :	PAGE 4 - 2

#### 4. WINDING SEQUENCE:



P2 WINDING FROM PIN7-12 SIDE

#### 5. SCHEMATIC:



REPORT BY	CHECK BY	APPROVED BY	CUSTOMER :	DATE	
			PART NO : 81P-16001	REV NO.	
			ISSUE NO :	PAGE	4 - 3

6. MATERIAL LIST :

NO.	DESCRIPTION	ITEM	MATERIAL	LIST OF SAMPLE	UL NO.	MANUFACTURER
1	BOBBIN	(1)	PHENOLIC(PM9820) Thickness:0.71mm Min.	✓	E41429	SUMITOMO
2	CASE	(2)	PET FR530 Thickness:0.75mm Min.	✓	E41938	EIDUPONT
3	PIN	(3)	TINNED C.P WIRE φ 0.8	✓		WELL FORE
4	CORE	(4)	FERRITE CORE ETD34 TP4A	✓		TDG
5	COPPER WIRE	(5)	POLYURETHANE(1UEW) TYPYU-130 MW75C	✓	E197768	HENG YA
6	TRIPLE WIRE	(6)	TEX-E	✓	E206440	FURUKAWA
		(7)	TIW-2LZ	✓	E166483	TOTOKU
7	MYLAR TAPE	(8)	POLYESTER FILM #1350F-1	✓	E17385	3M
8	TUBE	(9)	TEFLON TUBE TFL	✓	E156256	GREAT HOLDING
9	EPOXY		6020H	✓	E229633	WELLS
10	VARNISH		TVB2180T	✓	E83702	KYOCERA

REPORT BY	CHECK BY	APPROVED BY	CUSTOMER :	DATE	
			PART NO : 81P-16001	REV NO.	
			ISSUE NO :	PAGE	4 - 4