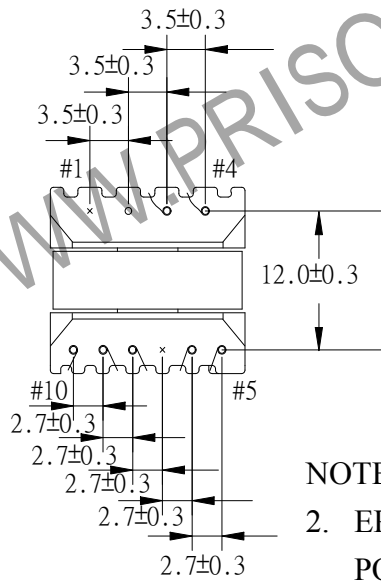
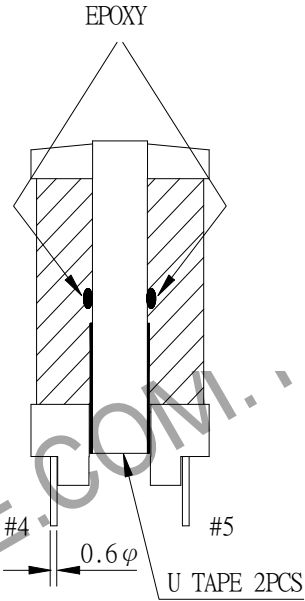
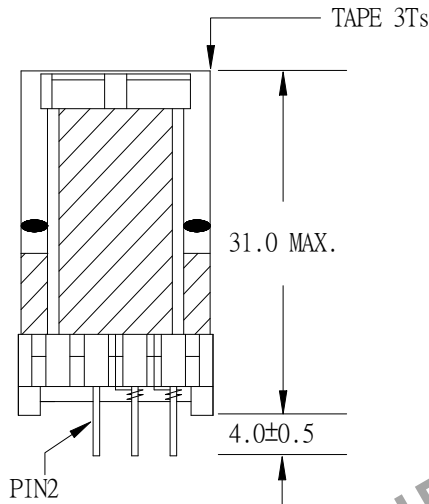
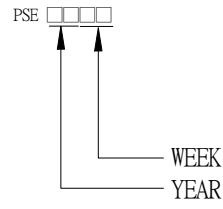
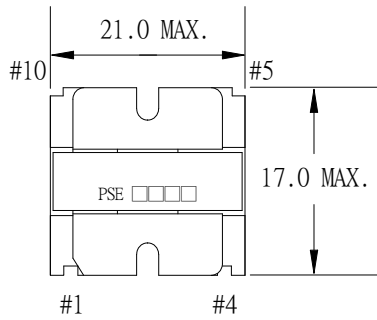
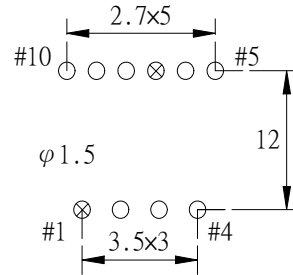


1. MECHANICAL & ASSEMBLY :



以下の治具に容易に挿入できること。



NOTE:

2. EPOXY FIXED BETWEEN CORE & CORE (TTL:4 POINTS). EPOXY FIXED TOP OF BOBBIN & CORE.(ONE POINT)
3. PIN 1,7 NO

UNIT:mm

REPORT BY	CHECK BY	APPROVED BY	CUSTOMER :	DATE
			PART NO : 81P-15014	REV NO.
			ISSUE NO :	PAGE
				4 - 1

2. WINDING CONFIGURATION :

STEP	WINDING	MARGIN TAPE	START-FINISH	COPPER WIRE	TURNS	LAYER TAPE	TUBE	METHOD
1	P1	~/2.0mm×1T	8 - 9	TEX-E 0.20φ	41	1T		CLOSE
2	S1	2.0mm/2.0mm×1T	4 - 3	TEX-E 0.20φ×2	14	1T		SPACE
3	P2	2.0mm/2.0mm×1T	5 - 6	TEX-E 0.20φ	21	2Ts		SPACE
4	P1'	~/2.0mm×1T	9 - 10	TEX-E 0.20φ	49	3Ts		CLOSE, SPACE

NOTE:

3. ELECTRICAL CHARACTERISTICS :

PIN NO.	INDUCTANCE 100 KHz, 0.1Vrms	LEAKAGE INDUCTANCE KHz, Vrms	VOLTAGE RATIO(V) F= 20KHz INPUT 1Vrms	DCR MAX. AT 25°C
8 - 10	970uH±10%			
8 - 9			0.4511Vrms±4.0%	0.9 Ω
4 - 3			0.1536Vrms±4.0%	172.0mΩ
5 - 6			0.2310Vrms±4.0%	0.6 Ω
9 - 10			0.5488Vrms±3.0%	1.3 Ω

HI-POT TEST :(AT 1 mA , 2SEC.)

PRI. TO SEC. 4400 VAC
PRI. TO CORE 4400 VAC

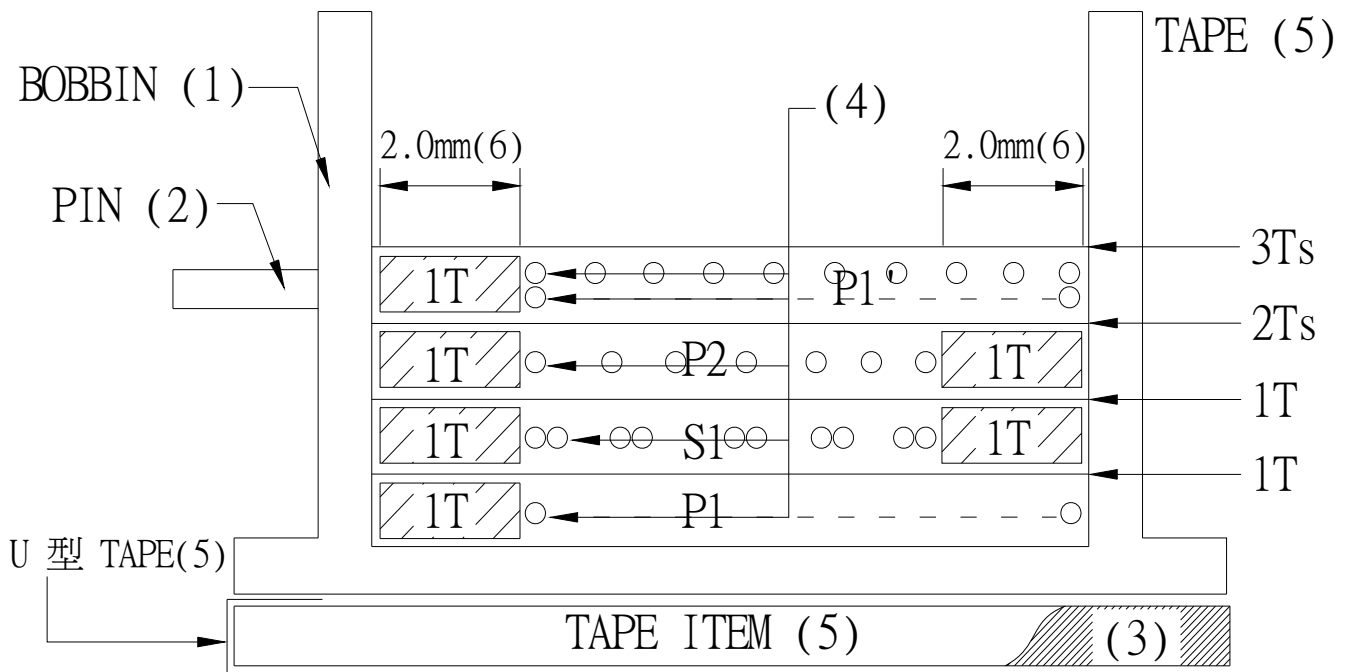
INSULATION RESISTANCE:(AT DC 500V)

PRI. TO SEC. 100 MΩ MIN.
PRI. TO CORE. 100 MΩ MIN.

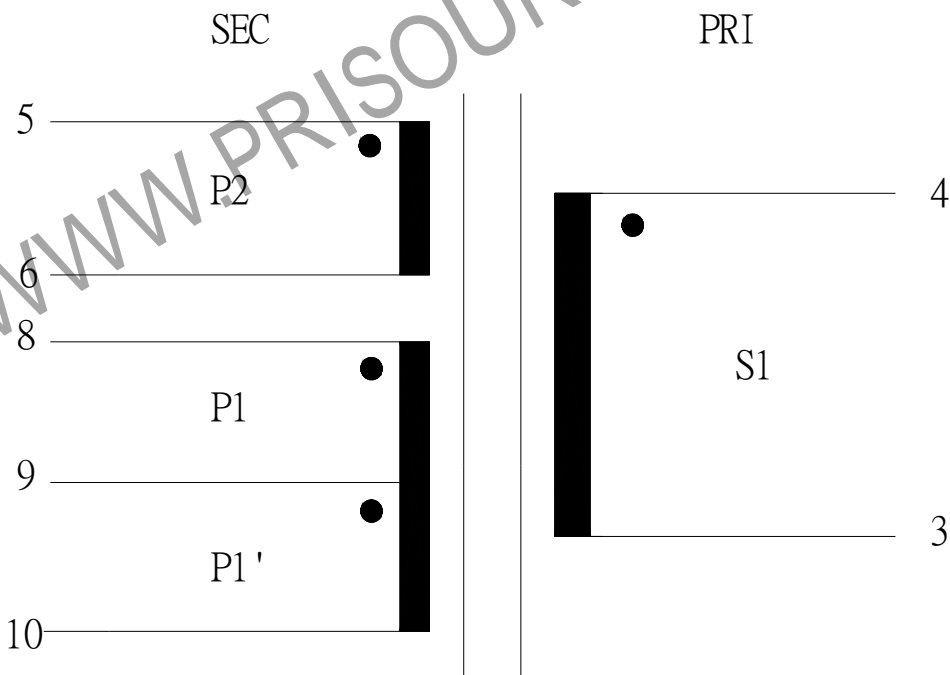
INPULSE TEST :1200V -P(8 - 10)

REPORT BY	CHECK BY	APPROVED BY	CUSTOMER :	DATE
			PART NO : 81P-15014	REV NO.
			ISSUE NO :	PAGE 4 - 2

4. WINDING SEQUENCE:



5. SCHEMATIC:



REPORT BY	CHECK BY	APPROVED BY	CUSTOMER :	DATE	
			PART NO : 81P-15014	REV NO.	
			ISSUE NO :	PAGE	4 - 3

6. MATERIAL LIST :

NO.	DESCRIPTION	ITEM	MATERIAL	LIST OF SAMPLE	UL NO.	MANUFACTURER
1	BOBBIN	(1)	PHENOLIC (PM9820) Thickness:0.71mm Min. P-1915-1	✓	E41429	SUMITOMO
2	PIN	(2)	TINNED C.P WIRE Φ 0.6	✓		WELL FORE
3	CORE	(3)	FERRITE CORE EE19B TP4	✓		TDG
4	TRIPLE WIRE	(4)	TEX-E	✓	E206440	FURUKAWA
5	MYLAR TAPE	(5)	POLYESTER FILM #1318-1 (Y)	✓	E17385	3M
6	MARGIN TAPE	(6)	COMPOSITE FILM #44T-A	✓	E17385	3M
7	EPOXY		6020H	✓	E229633	WELLS
8	VARNISH		TVB2180T	✓	E83702	KYOCERA

REPORT BY	CHECK BY	APPROVED BY	CUSTOMER :	DATE	
			PART NO : 81P-15014	REV NO.	
			ISSUE NO :	PAGE	4 - 1