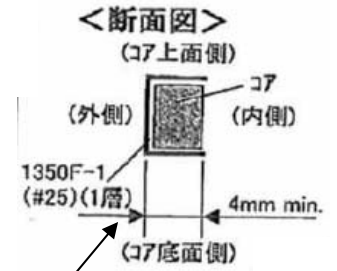
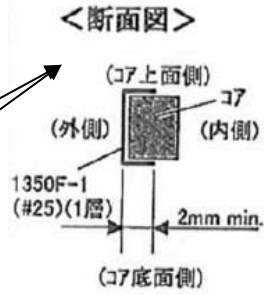
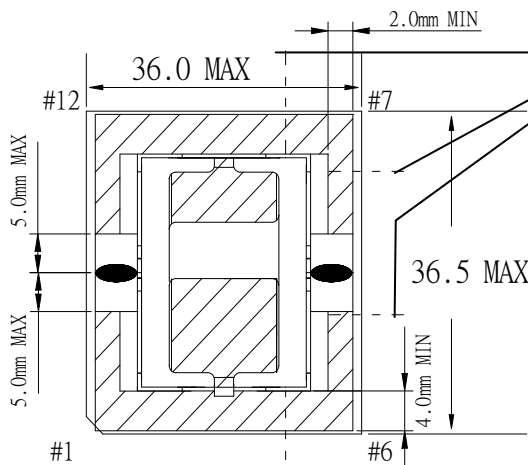
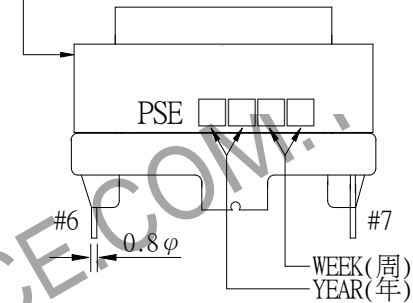
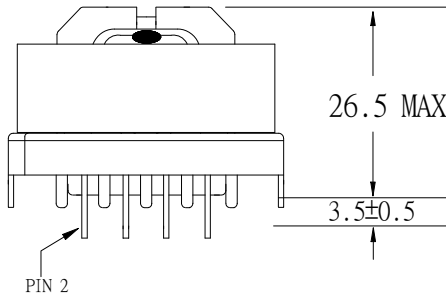


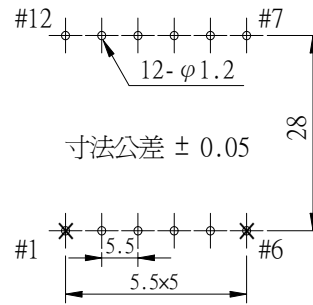
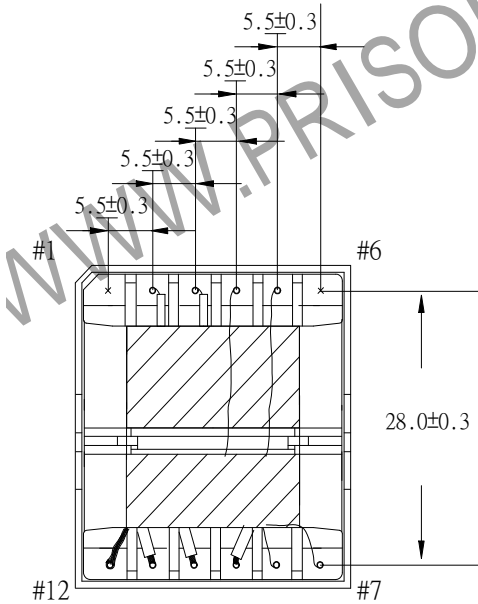
# 1. MECHANICAL & ASSEMBLY :



CORE TAPE 3Ts



以下の治具に容易に挿入できること。



NOTE:

1. EPOXY FIXED BETWEEN CORE & CORE (TTL:2 POINTS)
2. EPOXY FIXED TOP OF BOBBIN & CORE.(ONE POINT AT PIN1-6 SIDE).
3. PIN 1,6 NO.

REPORT BY	CHECK BY	APPROVED BY	CUSTOMER :	DATE
			PART NO : 81P-13011	REV NO.
			ISSUE NO :	PAGE 4 - 1

## 2. WINDING CONFIGURATION :

STEP	WINDING	MARGIN TAPE	START-FINISH	COPPER WIRE	TURNS	LAYER TAPE	TUBE	METHOD
1	P1		2 - 3	0.10φ/40C 50Ts/m 以上	35	1T/1T/1T/3Ts	#16/#16	CLOSE
2	S1		10 - 12	0.10φ/100C 45Ts/m 以上	4	1T	#12	BIFILAR, CLOSE
3	S2		11 - 9	0.10φ/100C 45Ts/m 以上	4		#12/#12	
4	S3		8 - 7	TEX-E 0.30φ	2	1T		SPACE
5	P2		5 - 4	TEX-E 0.30φ	3	3Ts		CLOSE Center

- NOTE: 1. **P2** 卷組 從中央開始朝⑦~⑫PIN 側繞  
 2. **S1,S2**: 並繞 (繞線 4Ts,共 2 層,每層 2Ts)

## 3. ELECTRICAL CHARACTERISTICS :

PIN NO.	INDUCTANCE 1.0KHz, 1.0Vrms	LEAKAGE INDUCTANCE 1KHZ, 1V	VOLTAGE RATIO(V) f= 20KHz	DCR (MAX) AT 25°C
2 - 3	592.0uH ± 10.0%	79.5uH ± 10.0%	INPUT 1Vrms	135.0mΩ
10 - 12		SHORT	0.1081V ± 4.0%	7.0mΩ
11 - 9		SHORT	0.1081V ± 4.0%	7.0mΩ
8 - 7		SHORT	0.0542V ± 5.0%	45.0mΩ
5 - 4			0.0815V ± 5.0%	70.0mΩ

HI-POT TEST : (AT 1 mA, 2 SEC)

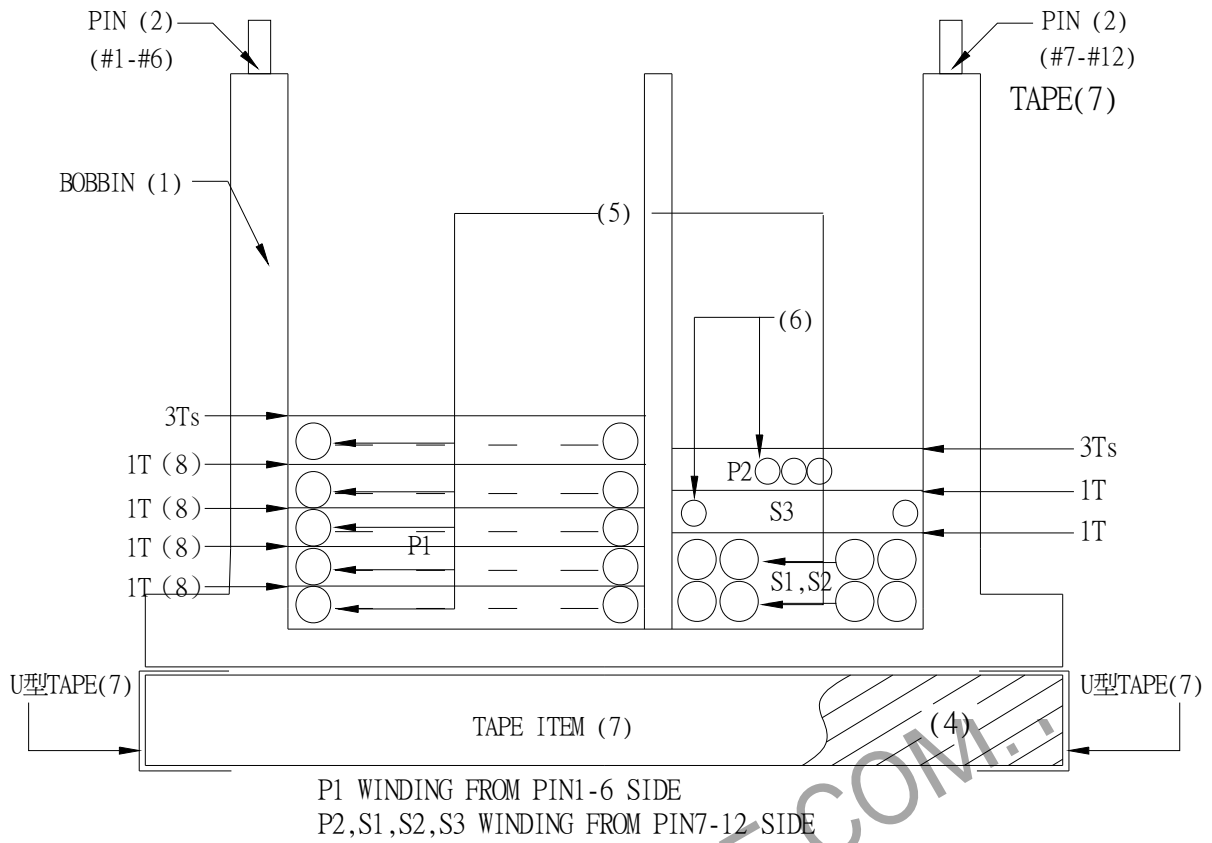
PRI.	TO	SEC.	4800 VAC
PRI.	TO	CORE.	4800 VAC
SEC.	TO	CORE.	720 VAC

INSULATION RESISTANCE: (AT DC500V)

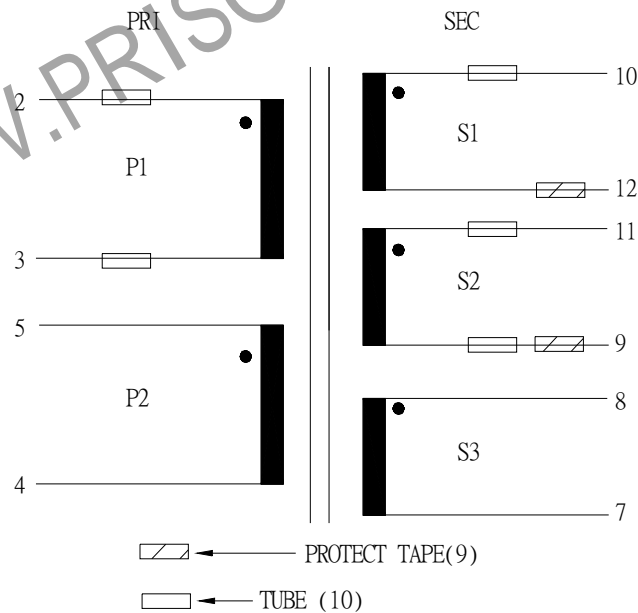
PRI.	TO	SEC.	100 MΩ MIN.
PRI.	TO	CORE.	100 MΩ MIN.
SEC.	TO	CORE.	100 MΩ MIN.

REPORT BY	CHECK BY	APPROVED	CUSTOMER :	DATE	
			PART NO : 81P-13011	REV NO.	
			ISSUE NO :	PAGE	4 - 2

#### 4. WINDING SEQUENCE:



#### 5. SCHEMATIC:



REPORT	BY	CHECK	APPROVED	CUSTOMER :	DATE	
				PART NO : 81P-13011	REV NO.	
				ISSUE NO :	PAGE	4 - 3

6. MATERIAL LIST :

NO.	DESCRIPTION	ITEM	MATERIAL	LIST OF SAMPLE	UL NO.	MANUFACTURER
1	BOBBIN	(1)	PHENOLIC(PM9820) Thickness:0.71mm Min.	✓	E41429	SUMITOMO
2	CASE	(2)	PET FR530 Thickness:0.75mm Min.	✓	E41938	E I DUPONT
3	PIN	(3)	TINNED C.P WIRE φ 0.8	✓		WELL FORE
4	CORE	(4)	FERRITE CORE ETD34 TP4A	✓		TDG
5	COPPER WIRE	(5)	POLYURETHANE(1UEW) TYPU-130 MW75C	✓	E197768	HENG YA
6	TRIPLE WIRE	(6)	TEX-E	✓	E206440	FURUKAWA
7	MYLAR TAPE	(7)	POLYESTER FILM #1350F-1	✓	E17385	3M
		(8)	POLYESTER FILM #1350F-2			
8	PROTECT TAPE	(9)	COMPOSITE FILM #44	✓	E17385	3M
9	TUBE	(10)	TEFLON TUBE(TFL)	✓	E156256	GREAT HOLDING
10	EPOXY		6020H	✓	E229633	WELLS
11	VARNISH		WP-2952F-2G	✓	E72979	HITACHI

REPORT BY	CHECK BY	APPROVED BY	CUSTOMER :	DATE	
			PART NO : 81P-13011	REV NO.	
			ISSUE NO :	PAGE	4 - 4