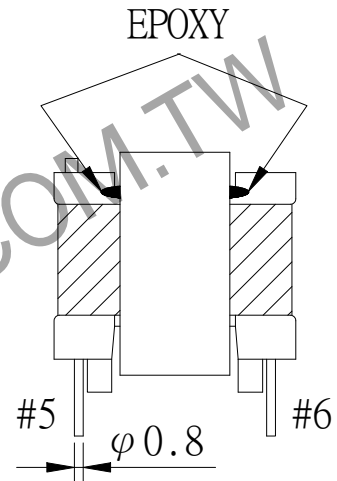
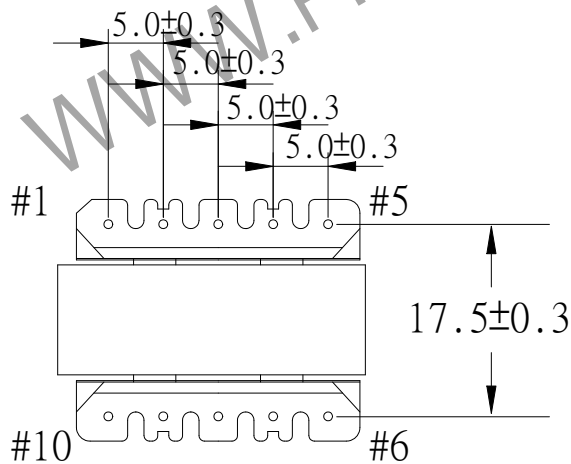
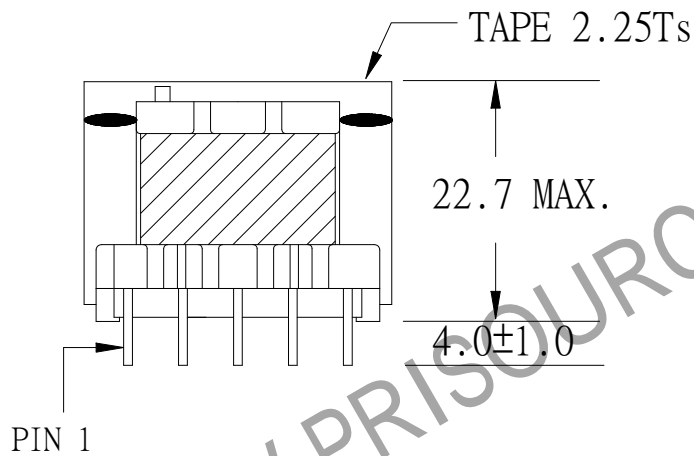
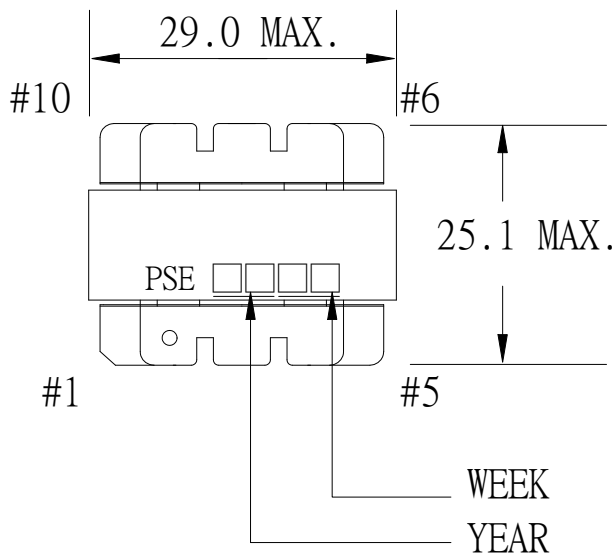


1. MECHANICAL & ASSEMBLY :



NOTE:

1. EPOXY FIXED BETWEEN CORE & CORE (TTL:4 POINTS).
2. MEET CLASS B INSULATION SYSTEM " SBI4.2 " E181448

UNIT : m/ m

REPORT BY	CHECK BY	APPROVED BY	CUSTOMER:	DATE	
			PART NO : 76P-15001	REV NO.	
			ISSUE NO :	PAGE	4- 1

2. WINDING CONFIGURATION :

STEP	WINDING	MARGIN TAPE	START-FINIS	COPPER WIRE	TURNS	LAYER TAPE	METHOD	TUBE
1						1.25Ts		
2	P1	2.0mm/~×3Ts	5 - X	0.4.φ	34	1.25Ts	CLOSE	0.8φ
3	S1		6 - 9	TEX-E 0.40φ	15	1.25Ts	CLOSE	
4	P1'	2.0mm/~×3Ts	X - 1	0.40φ	34	1.25Ts	CLOSE	0.8φ
5	S2		7 - 10	TEX-E 0.40φ	15	1.25Ts	CLOSE	
6	P2	2.0mm/~×1T	3 - 4	0.23φ	6	2.25Ts	SPACE	
7			X 抽頭反折			4.25Ts		

NOTE:

3. ELECTRICAL CHARACTERISTICS :

PIN NO.	INDUCTANCE 1.0KHz, 1.0Vrms	LEAKAGE INDUCTANCE KHz, Vrms	VOLTAGE RATIO(V) f= 20KHz	DCR MAX. AT 25°C
5 - 1	1075uH±10%		INPUT 1Vrms	0.62 Ω
6 - 9			0.2210Vrms±4.0%	135.0mΩ
7 - 10			0.2204Vrms±4.0%	165.0mΩ
3 - 4			0.0878Vrms±4.0%	210.0mΩ

NOTE:

- 保管条件: -20 °C ~ +60 °C, 70% RH MAX.
- 使用期限: 1 YEAR (NEED CHECKED SOLDERABILITY OF PINS AFTER 6 MONTH)

HI-POT TEST : (AT 1 mA, 2 SEC)

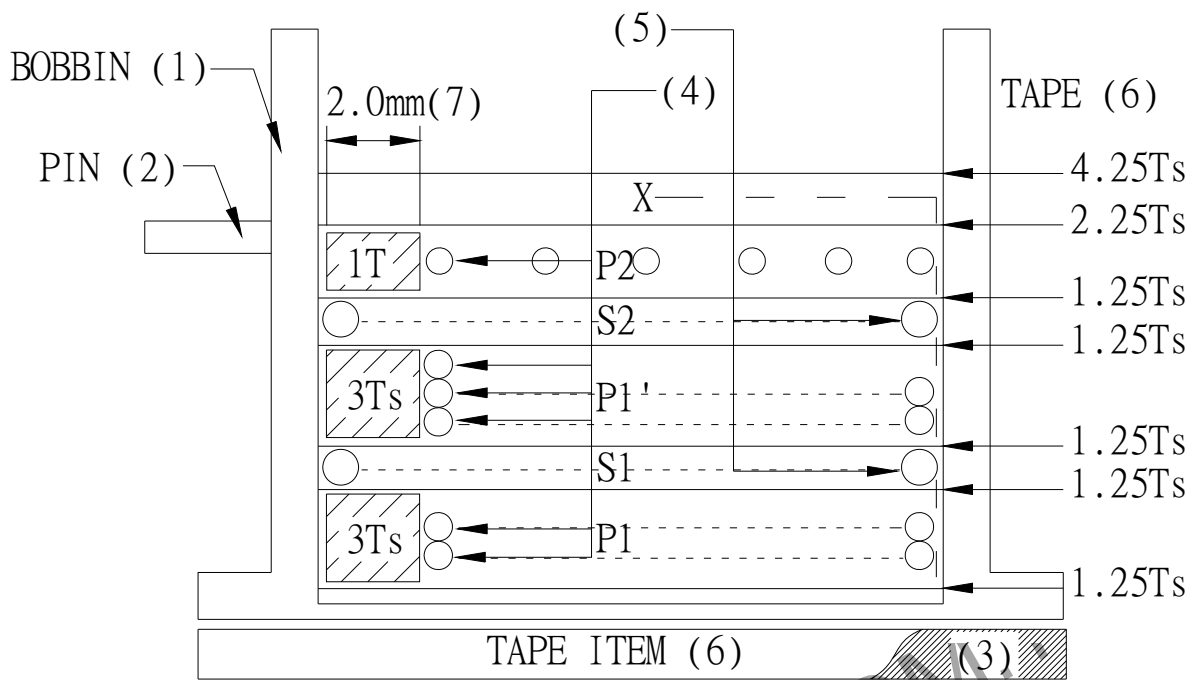
PRI	TO	SEC	2400 VAC
PRI	TO	CORE	2400 VAC
SEC	TO	CORE	2400 VAC

INSULATION RESISTANCE: (AT DC 500V)

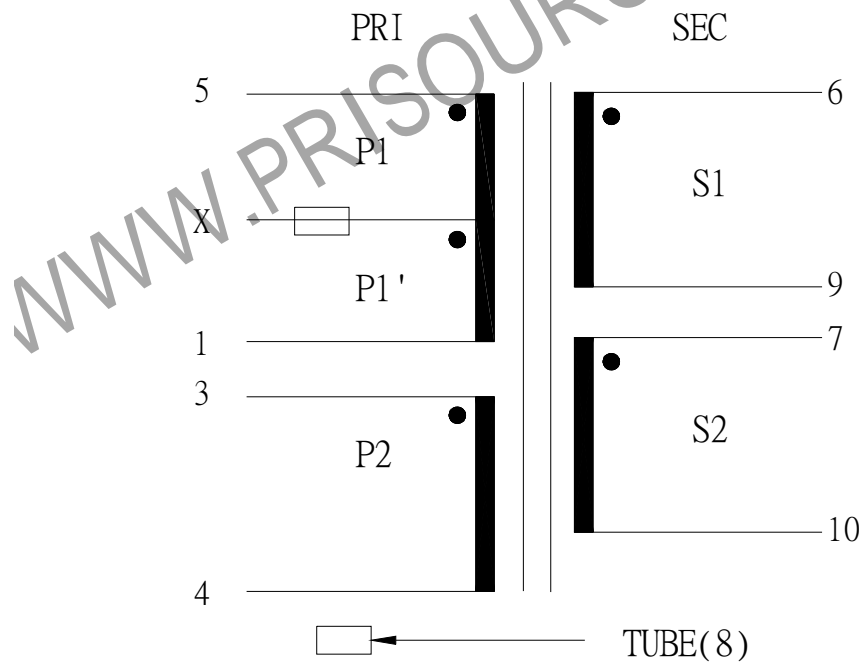
PRI	TO	SEC	100 MΩ MIN.
PRI	TO	CORE	100 MΩ MIN.
SEC	TO	CORE	100 MΩ MIN.

REPORT	BY	CHECK	BY	APPROVED BY	CUSTOMER:	DATE	
					PART NO : 76P-15001	REV NO.	
					ISSUE NO :	PAGE	4- 2

4. WINDING SEQUENCE :



5. SCHEMATIC :



REPORT BY	CHECK BY	APPROVED BY	CUSTOMER:	DATE
			PART NO : 76P-15001	REV NO.
			ISSUE NO :	PAGE 4- 3

6 . MATERIALS LIST :

NO	DESCRIPTION	ITEM	MATERIAL	LIST OF SAMPLE	UL NO.	MANUFACTURE	
1	BOBBIN	(1)	PHENOLIC (PM9820) Thickness:0.30mm Min.	√	E41429	SUMITOMO	
2	PIN	(2)	TINNED C.P WIRE φ0.8	√			
3	CORE	(3)	FERRITE CORE EI28B TP4	√		TDG	
4	COPPER WIRE	(4)	POLYURETHANE (2UEWN) TYPU-130 MW75-C	√	E197768	HENG YA	
5	TRIPLE WIRE	(5)	TEX-E	√	E206440	FURUKAWA	
6	MYLAR TAPE	(6)	POLYESTER FILM 1350F-1 Y	√	E17385	3M	
7	MARGIN TAPE	(7)	COMPOSITE FILM #44T-A	√	E17385	3M	
8	TUBE	(8)	SILICON TUBE RSU-1	√	E67922	NISSEI	
9	MYLAR FILM		t0.30mm	√		TORAY	
10	EPOXY		6020H	√	E229633	WELLS	
11	VARNISH		TVB2180T	√	E83702	KYOCERA	
REPORT	BY	CHECK	BY	APPROVED	CUSTOMER :		DATE
					PART NO : 76P-15001		REV NO.
					ISSUE NO :		PAGE 4- 4