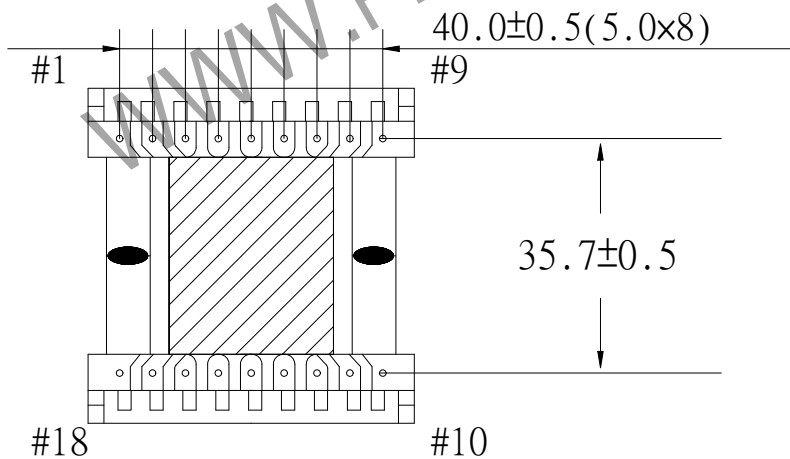
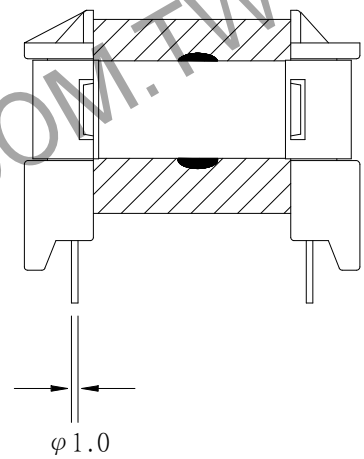
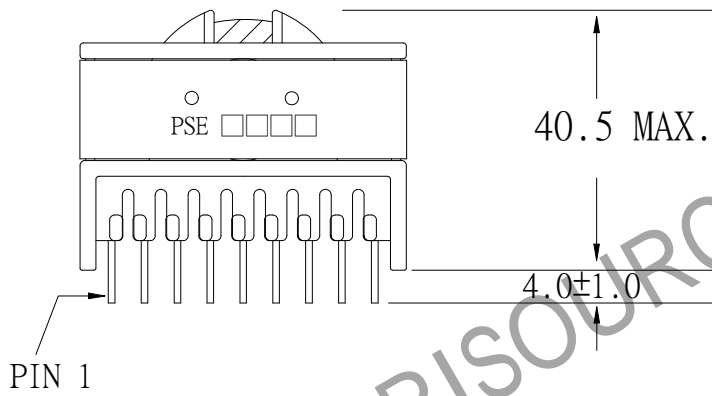
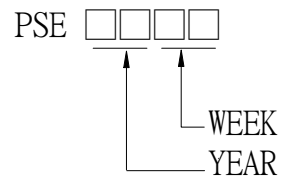
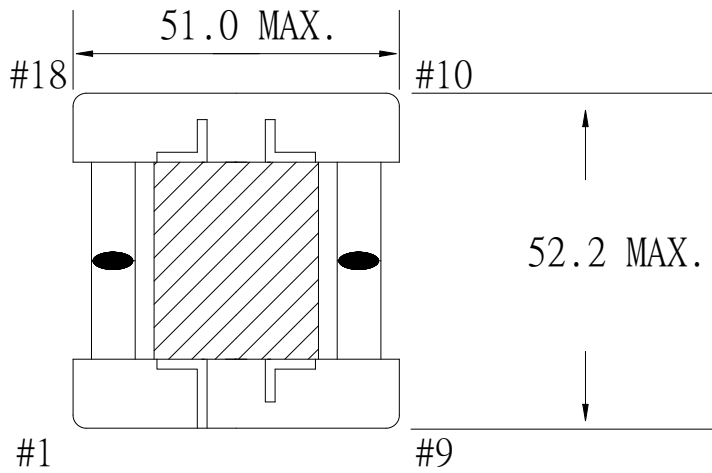


1. MECHANICAL & ASSEMBLY :



NOTE:

1. EPOXY FIXED BETWEEN CORE & CORE (TTL:4 POINTS).

UNIT : m/m

REPORT BY	CHECK BY	APPROVED BY	CUSTOMER :	DATE	
			PART NO : 66P-14001	REV NO.	
			ISSUE NO :	PAGE	4 - 1

2. WINDING CONFIGURATION :

STEP	WINDING	MARGIN TAPE	START-FINISH	COPPER WIRE	TURNS	TUBE	LAYER TAPE	METHOD
1	P1	-	2 - 3	0.45 φ ×3	14	#17	1T	SPACE
2	SL1	3.0mm/3.0mm ×1T	1 -	t0.05×22mm	1	#24	3Ts	CLOSE
3	S1	3.0mm/3.0mm×2Ts	15 - 13	0.45 φ ×6	7	#12	3Ts	CLOCE
4	P2	3.0mm/3.0mm ×1T	8 - 7	0.20 φ	9	#24	3Ts	SPACE
5	S2	3.0mm/3.0mm×2Ts	16 - 14	0.45 φ ×6	7	#12	3Ts	CLOCE
6	SL2	3.0mm/3.0mm ×1T	1 -	t0.05×22mm	1	#24	1T	CLOSE
7	P3	3.0mm/3.0mm×2Ts	4 - 5	0.45 φ ×3	14	#17	3Ts	CLOSE

NOTE:

3. ELECTRICAL CHARACTERISTICS :

PIN NO.	INDUCTANCE 1.0 KHz, 0.3Vrms	LEAKAGE INDUCTANCE KHz, Vrms	VOLTAGE RATIO(V) F= 20KHz INPUT 0.1 Vrms	DCR MAX. AT 25°C
2 - 3	47.0 uH±10.0%			40.0 mΩ MAX.
15 - 13			0.0496Vrms±7.0%	12.0 mΩ MAX.
8 - 7			0.0634Vrms±5.0%	0.49 Ω MAX.
16 - 14			0.0494Vrms±7.0%	13.5 mΩ MAX.
4 - 5			0.0981Vrms±5.0%	58.0 mΩ MAX.

HI-POT TEST:(AT 1 mA , 2 SEC)

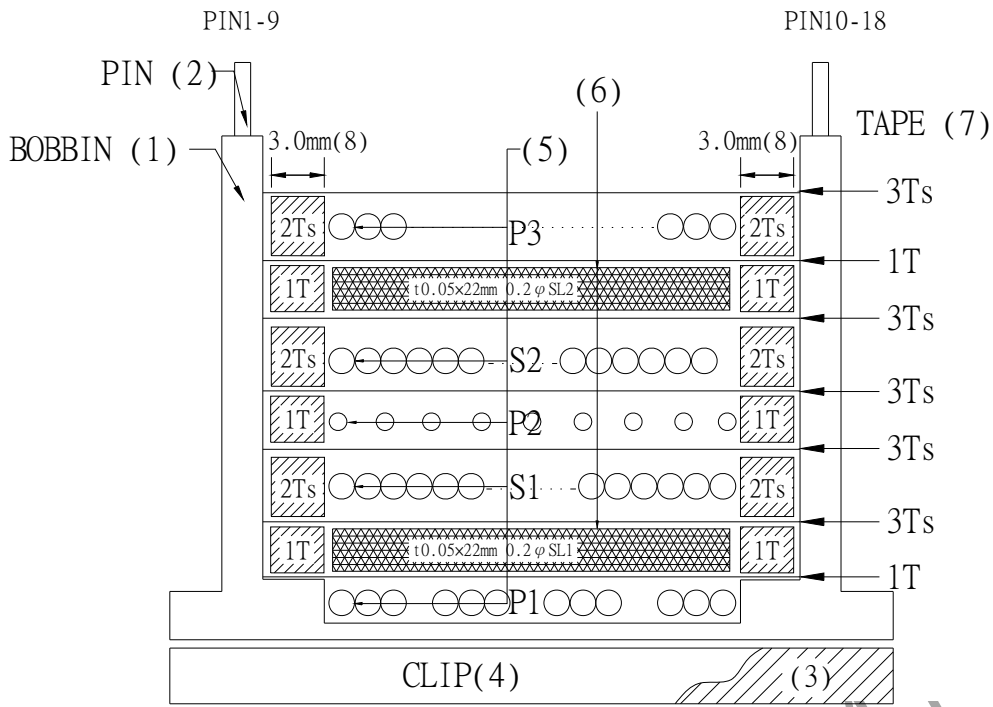
PRI.	TO	SEC.	3600 VAC
PRI.	TO	CORE	1800 VAC
SEC.	TO	CORE	1800 VAC

INSULATION RESISTANCE:(AT DC 500V)

PRI.	TO	SEC.	100 MΩ MIN.
PRI.	TO	CORE	100 MΩ MIN.
SEC.	TO	CORE	100 MΩ MIN.

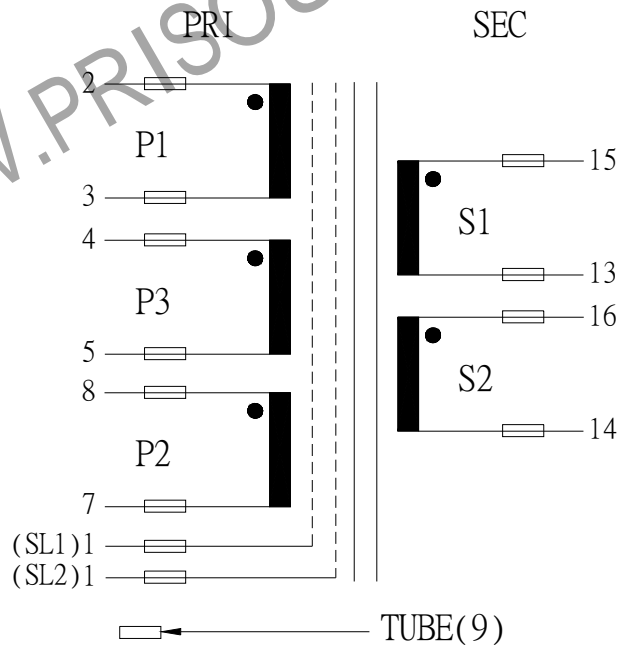
REPORT BY	CHECK BY	APPROVED BY	CUSTOMER :	DATE	
			PART NO : 66P-14001	REV NO.	
			ISSUE NO :	PAGE	4 - 2

4. WINDING SEQUENCE:



P1,,P2,P3 WINDING FROM PIN 1-9 SIDE
 S1,S2 WINDING FROM PIN 10-18 SIDE

5. SCHEMATIC:



REPORT	BY	CHECK	BY	APPROVED	BY	CUSTOMER :	DATE	
						PART NO : 66P-14001	REV NO.	
						ISSUE NO :	PAGE	4 - 3

6 . MATERIAL LIST :

NO	DESCRIPTION	ITEM	MATERIAL	LIST OF SAMPLE	UL NO.	MANUFACTURE
1	BOBBIN	(1)	PHENOLIC(T375J) Thickness : 0.8mm MIN	√	E59481	CHANG CHUN
2	PIN	(2)	TINNED C.P WIRE 1.0 φ	√		WELL FORE
3	CORE	(3)	FERRITE CORE ETD44 TP4A	√		TDG
4	CLIP	(4)	STAINLESS SUS301	√		YIH HWA
5	COPPER WIRE	(5)	POLYURETHANE (2UEW) TYPU-130 MW-75C	√	E197768	HENG YA
6	SCREEN	(6)	COPPER FOIL t0.05×22mm	√		TORAY
7	MYLAR TAPE	(7)	POLYIMIDE FILM 180°C #1218-1	√	E17385	3M
8	MARGIN TAPE	(8)	COMPOSITE FILM #44D-A	√	E17385	3M
9	TUBE	(9)	TEFLON TUBE PTFE TFL	√	E156256	GREAT HOLDING
10	EPOXY		6020H	√	E229633	WELLS
11	VARNISH		TVB2180T	√	E83702	KYOCERA

REPORT BY	CHECK BY	APPROVED BY	CUSTOMER :	DATE	
			PART NO : 66P-14001	REV NO.	
			ISSUE NO :	PAGE	4 - 4