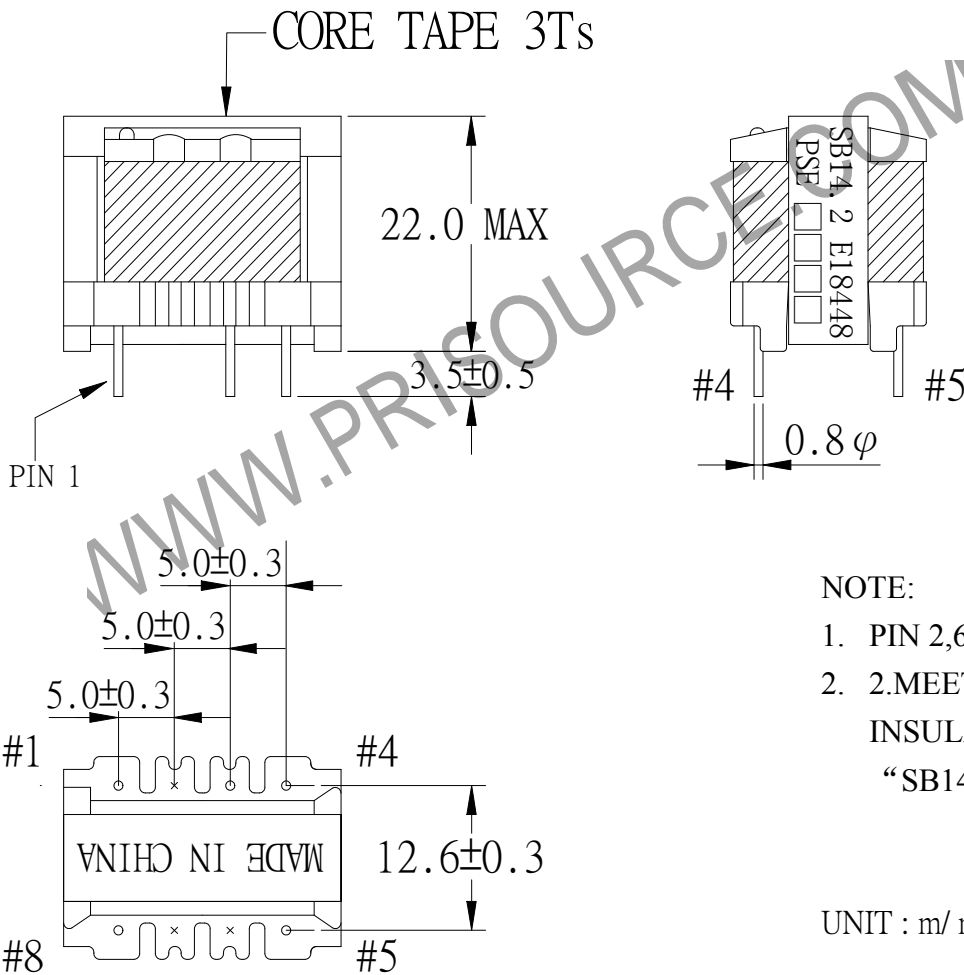
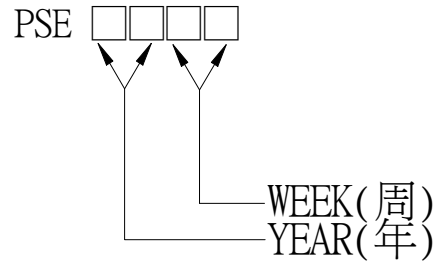
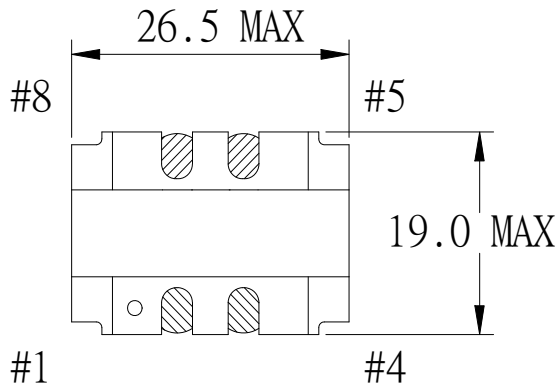


1. MECHANICAL & ASSEMBLY :



REPORT BY	CHECK BY	APPROVED BY	CUSTOMER :	DATE
			PART NO : 65P-16001	REV NO.
			ISSUE NO :	PAGE
				4 - 1

2. WINDING CONFIGURATION :

STEP	WINDING	MARGIN TAPE	START-FINISH	COPPER WIRE	TURNS	LAYER TAPE	METHOD
1	P1		1 - 4	0.05 ϕ	7500	2Ts	CLOSE
2	S2		5 - 8	0.10 ϕ	905	2Ts	CLOSE

NOTE:

3. ELECTRICAL CHARACTERISTICS :

PIN NO	DCR(MAX) AT 25°C	LOAD CURRENT 60Hz, 120Vrms	LOAD VOLTAGE	LOAD VOLTAGE AC 12mA
INPUT 1-4	3.50 k Ω	4.5mA MAX	120V, 60Hz	120V, 60Hz
OUTPUT 5-8	135.0 Ω		14.06V \pm 5.0%	12.0V \pm 5.0%

HI-POT TEST : (AT 1 mA, 2 SEC.)

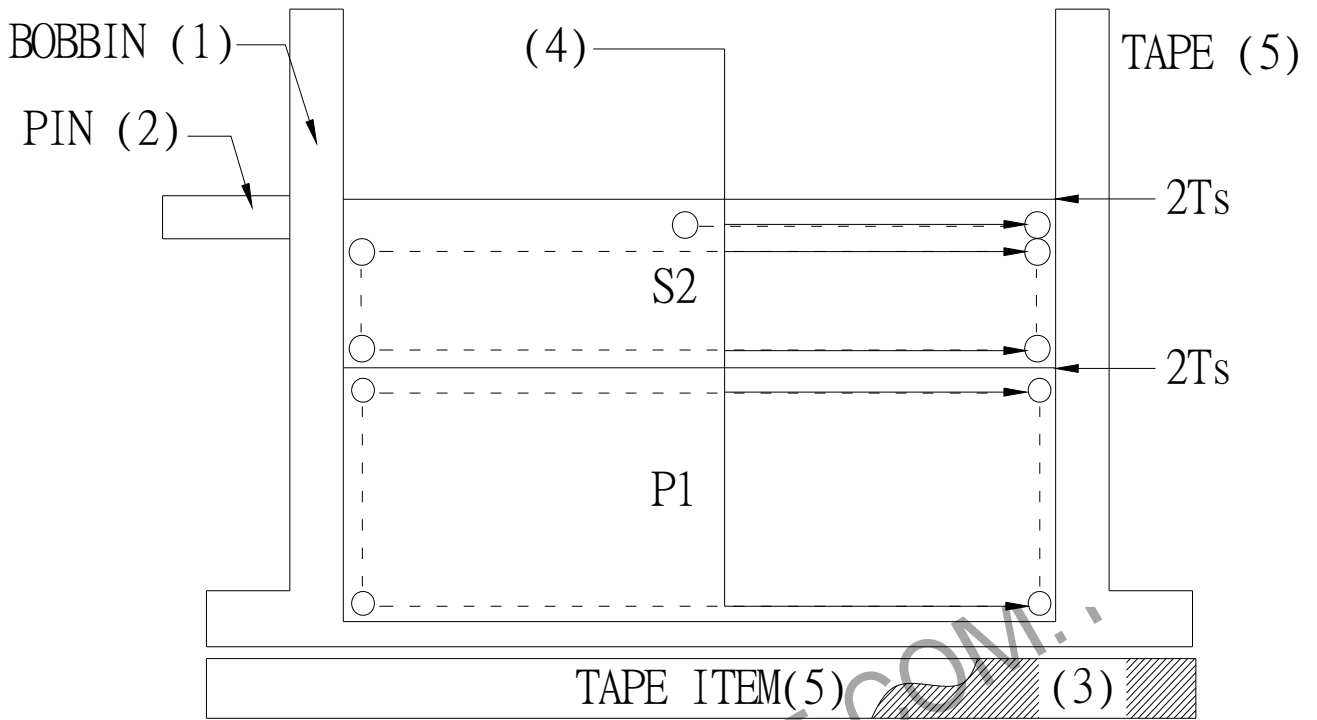
PRI TO SEC 1800 VAC
 PRI TO CORE 1800 VAC
 SEC TO CORE 600 VAC

INSULATION TEST : (AT DC500V)

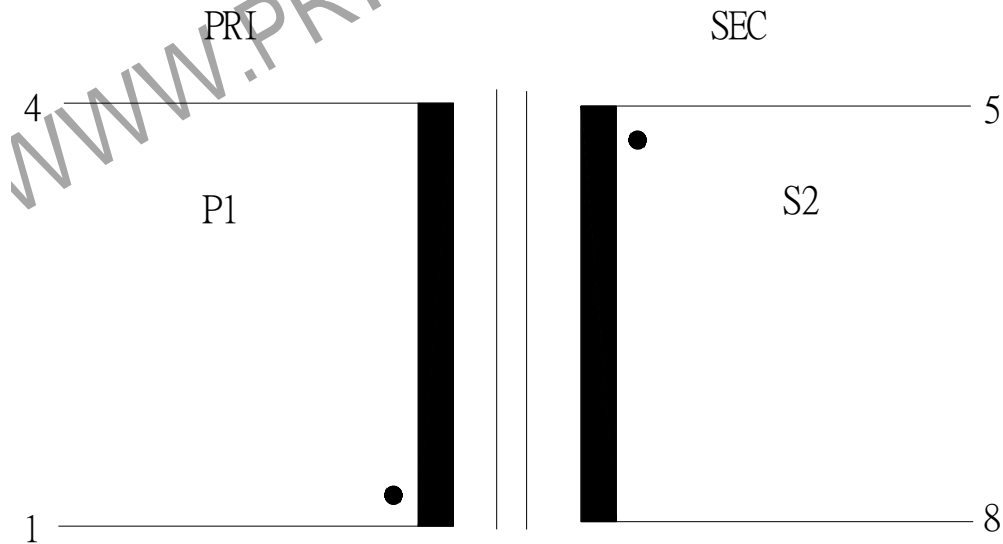
PRI TO SEC 100 M Ω MIN.
 PRI TO CORE 100 M Ω MIN.
 SEC TO CORE 100 M Ω MIN.

REPORT BY	CHECK BY	APPROVED BY	CUSTOMER :	DATE
			PART NO : 65P-16001	REV NO.
			ISSUE NO :	PAGE 4 - 2

4. WINDING SEQUENCE:



5. SCHEMATIC:



REPORT BY	CHECK BY	APPROVED BY	CUSTOMER :	DATE	
			PART NO : 65P-16001	REV NO.	
			ISSUE NO :	PAGE	4 - 3

6. MATERIAL LIST :

NO.	DESCRIPTION	ITEM	MATERIAL	LIST OF SAMPLE	UL NO.	MANUFACTURER
1	BOBBIN	(1)	PHENOLIC(PM9820) Thickness:0.80mm Min.	✓	E59481	CHANG CHUN
2	PIN	(2)	TINNED C.P WIRE φ 0.8	✓		WELL FORE
3	CORE	(3)	FERRITE CORE EI-25.4 Z11 t=0.3mm	✓		MING KEN
4	COPPER WIRE	(4)	POLYURETHANE (2UEW) TYPYU-130 MW75-C	✓	E197768	HENG YA
5	MYLAR TAPE	(5)	POLYESTER FILM #1318-1 Y	✓	E17385	3M
6	VARNISH		TVB2180T	✓	E83702	KYOCERA

REPORT BY	CHECK BY	APPROVED BY	CUSTOMER :	DATE	
			PART NO : 65P-16001	REV NO.	
			ISSUE NO :	PAGE	4 - 4