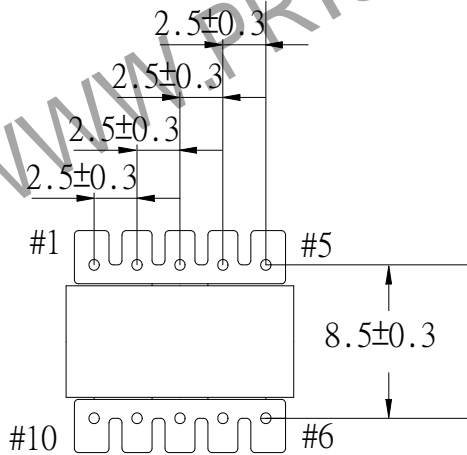
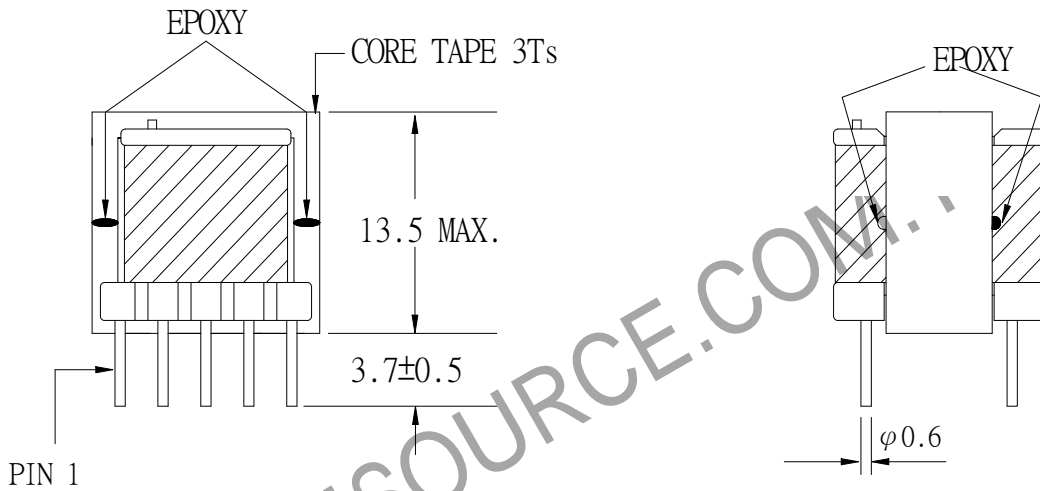
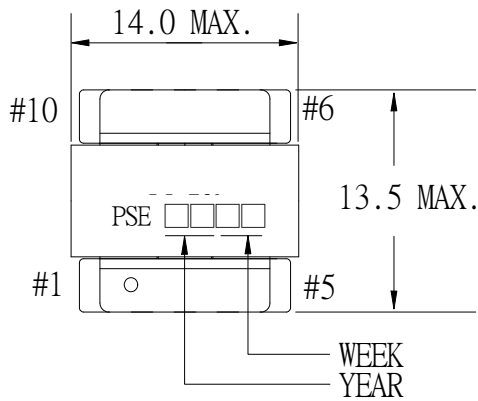


1. MECHANICAL & ASSEMBLY :



NOTE:

1. BETWEEN CORE & CORE (TTL:4 POINTS)
2. ADD ONE DROPS OF GLUE INSIDE OF THE CORE TOP.

UNIT : mm

REPORT BY	CHECK BY	APPROVED BY	CUSTOMER :	DATE	
			PART NO : 54P-17041	REV NO.	
			ISSUE NO :	PAGE	4 - 1

## 2. WINDING CONFIGURATION :

STEP	WINDING	MARGIN TAPE	START-FINISH	COPPER WIRE	TURNS	LAYER TAPE	TUBE	METHOD
1	S		8 - 7	0.1 $\phi$	115	2Ts		CLOSE
2	P		4 - 3	0.35 $\phi$	40	2Ts		CLOSE
3	H2		9 - 10	0.35 $\phi$	7	2Ts	#28	SPACE
4	H1		2 - 1	0.35 $\phi$	7	2Ts	#28	SPACE
5	F		5 - 6	0.1 $\phi$	6.5	3Ts		SPACE

NOTE:

## 3. ELECTRICAL CHARACTERISTICS :

PIN NO.	INDUCTANCE 1.0 KHz, 1.0Vrms	LEAKAGE INDUCTANCE KHz, Vrms	VOLTAGE RATIO(V) f= 20KHz INPUT 1Vrms	DCR MAX AT 25°C
4 - 3	90.0 $\mu$ H $\pm$ 10%			245.5 m $\Omega$
8 - 7			2.7560 Vrms $\pm$ 3.0%	7.0 $\Omega$
2 - 1			0.1762 Vrms $\pm$ 4.0%	59.0 m $\Omega$
9 - 10			0.1766 Vrms $\pm$ 4.0%	55.5 m $\Omega$
5 - 6			0.1637 Vrms $\pm$ 4.0%	0.65 $\Omega$

HI-POT TEST : (AT 1 mA, 2 SEC)

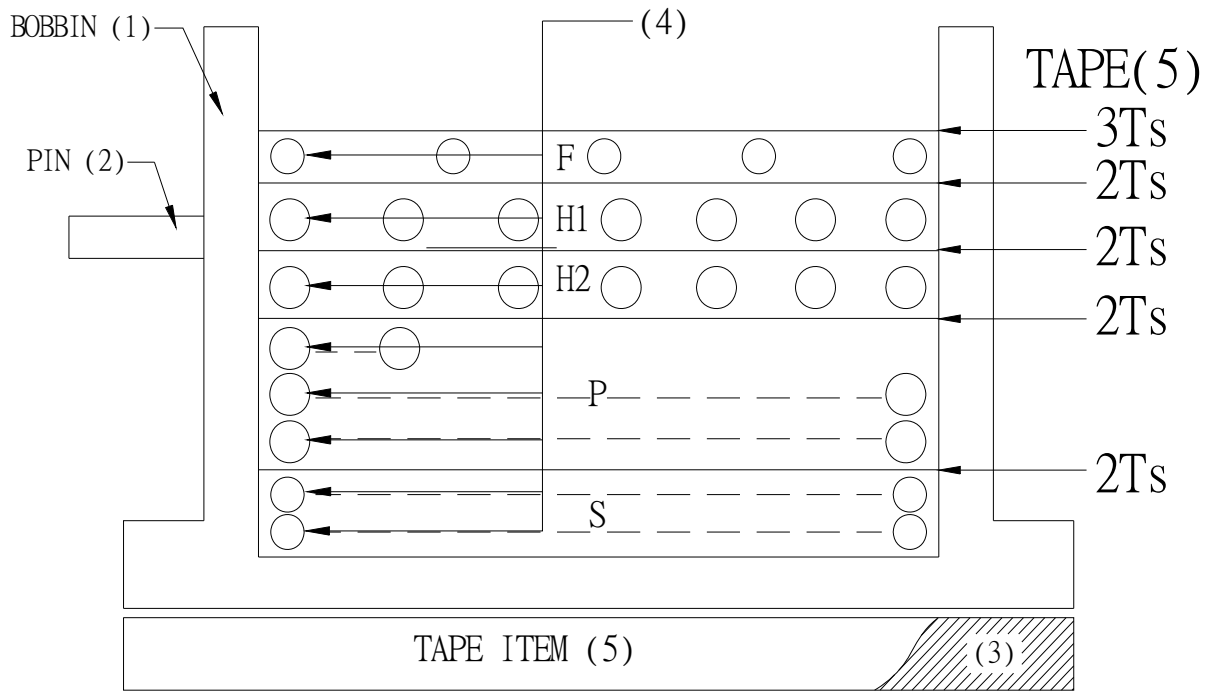
PRI, SEC TO CORE. 600 VAC  
 PRI TO SEC. 600 VAC

INSULATION RESISTANCE: (AT DC 500V)

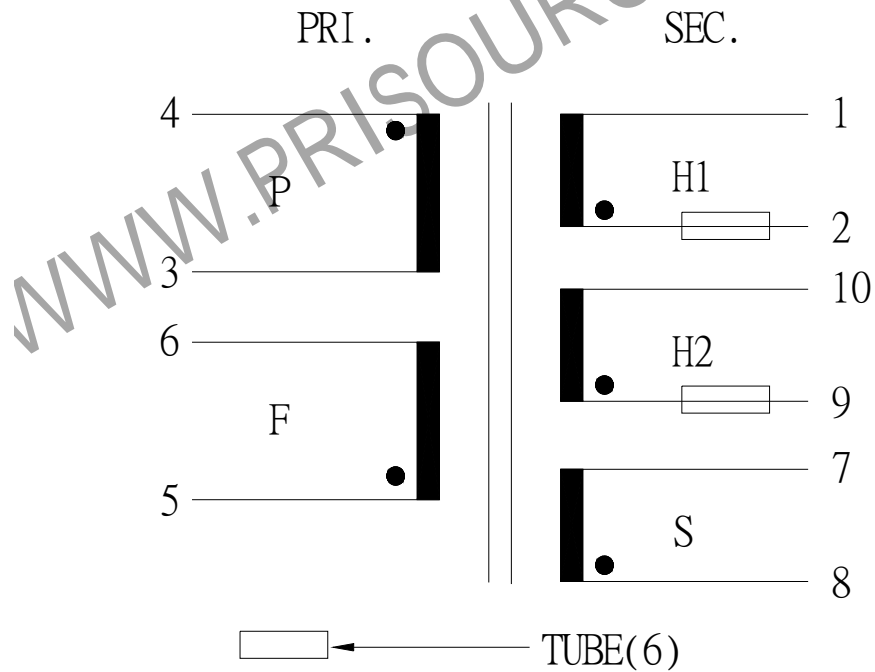
PRI, SEC TO CORE. 100 M $\Omega$  MIN.  
 PRI TO SEC. 100 M $\Omega$  MIN.

REPORT BY	CHECK BY	APPROVED BY	CUSTOMER :	DATE
			PART NO : 54P-17041	REV NO.
			ISSUE NO :	PAGE 4 - 2

#### 4. WINDING SEQUENCE:



#### 5. SCHEMATIC:



REPORT BY	CHECK BY	APPROVED BY	CUSTOMER :	DATE
			PART NO : 54P-17041	REV NO.
			ISSUE NO :	PAGE
				4 - 3

## 6. MATERIAL LIST :

NO.	DESCRIPTION	ITEM	MATERIAL	LIST OF SAMPLE	UL NO.	MANUFACTURER
1	BOBBIN	(1)	PHENOLIC (PM9820) Thickness:0.6 mm Min. P-1302	✓	E41429	SUMITOMO
2	PIN	(2)	TINNED COPPER WIRE $\phi$ 0.6	✓		PIN SHINE WELL FORE
3	CORE	(3)	FERRITE CORE EE13 TP4 CORE GAP : 0.41mm	✓		TDG
4	COPPER WIRE	(4)	POLYURETHANE (2UEW) MW75-C TYPYU-130	✓	E197768	HENG YA
5	MYLAR TAPE	(5)	POLYESTER FILM #1318Y-1	✓	E17385	3M
6	TUBE	(6)	TEFLON TUBE TFL	✓	E156256	GREAT HOLDING
7	EPOXY		EP-138	✓		CEMEDINE
8	VARNISH		TVB2180T	✓	E83702	KYOCERA

REPORT BY	CHECK BY	APPROVED BY	CUSTOMER :	DATE
			PART NO : 54P-17041	REV NO.
			ISSUE NO :	PAGE
				4 - 4