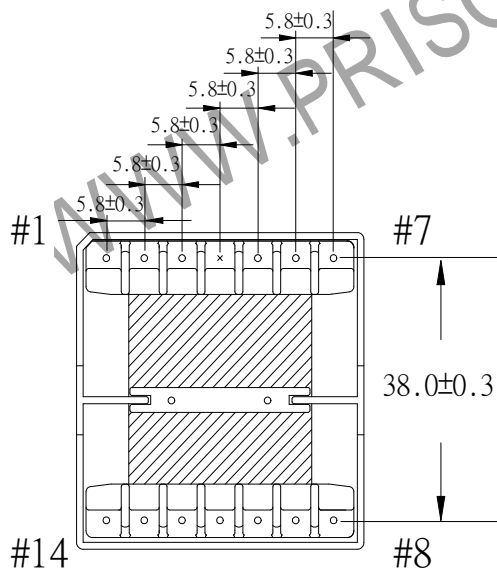
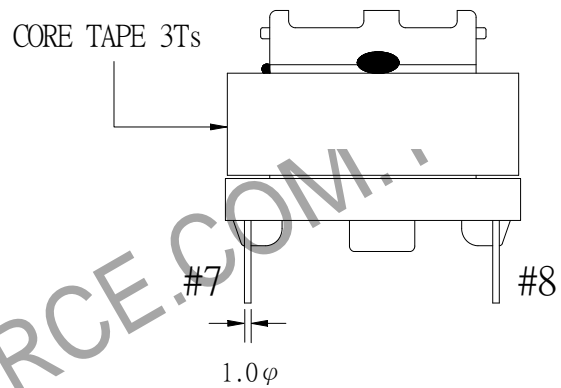
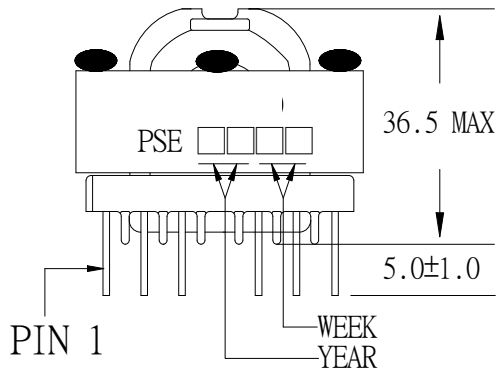
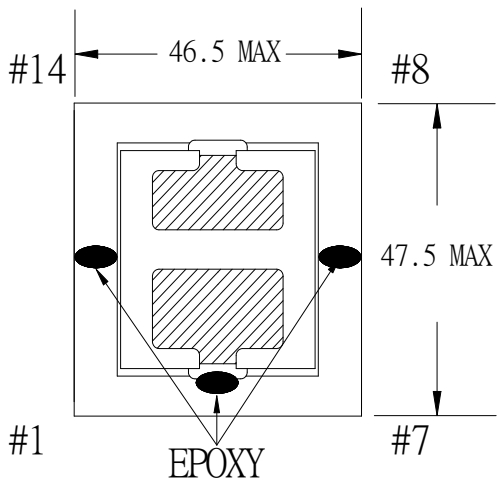


1. MECHANICAL & ASSEMBLY :



NOTE:

1. EPOXY FIXED BETWEEN CORE & CORE (TTL:2 POINTS)
2. EPOXY FIXED TOP OF BOBBIN & CORE.(ONE POINT AT PIN1-7 SIDE).
3. PIN 4 NO.

UNIT : m/ m

REPORT BY	CHECK BY	APPROVED BY	CUSTOMER :	DATE	
			PART NO : 54P-17008	REV NO.	
			ISSUE NO :	PAGE	4 - 1

2. WINDING CONFIGURATION :

STEP	WINDING	MARGIN TAPE	START-FINISH	COPPER WIRE	TURNS	LAYER TAPE	METHOD
1	P1		5 - 3	0.12 ϕ /70C	30	2Ts	CLOSE
2	P2		2 - 1	0.35 ϕ	2	1T	CLOSE
3	P3		7 - 6	0.35 ϕ	2	3Ts	CLOSE , AFTER P2
4	S1-1		10,11 - 8,9	0.12 ϕ /100C x2	2	2Ts	BIFILAR, CLOSE
5	S1-2		13,14 - 10,11	0.12 ϕ /100C x2	2		
6	S1-1'		11,12 - 8,9	0.12 ϕ /100C x2	2	3Ts	BIFILAR, CLOSE
7	S1-2'		13,14 - 12,10	0.12 ϕ /100C x2	2		

3. ELECTRICAL CHARACTERISTICS :

PIN NO.	INDUCTANCE 100 KHz, 1.0Vrms	LEAKAGE INDUCTANCE 100 KHz, 1.0Vrms	VOLTAGE RATIO(V) f= 20KHz INPUT 1 Vrms	DCR MAX. AT 25°C
5 - 3	475.0 uH \pm 10%	72.0 uH \pm 10%		56.0 m Ω
2 - 1			0.0681Vrms \pm 5.0%	40.5 m Ω
7 - 6			0.0680Vrms \pm 5.0%	42.0 m Ω
10,11-8,9		SHORT	0.0616Vrms \pm 5.0%	2.8 m Ω
13,14-10,11		SHORT	0.0617Vrms \pm 5.0%	2.7 m Ω
11,12-8,9		SHORT	0.0616Vrms \pm 5.0%	2.7 m Ω
13,14-12,10		SHORT	0.0616Vrms \pm 5.0%	2.8 m Ω

HI -POT TEST : (AT 1 mA, 1 SEC)

PRI	TO	SEC	3600 VAC
PRI	TO	CORE	1800 VAC
SEC	TO	CORE	1800 VAC

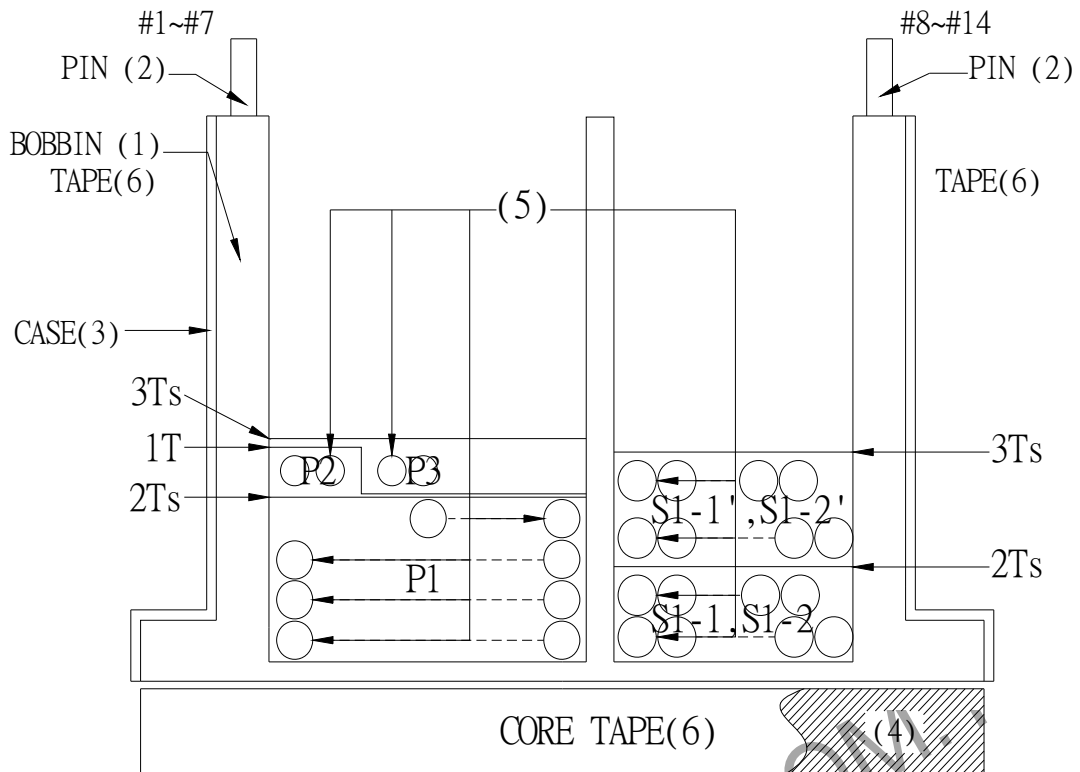
INSULATION RESISTANCE: (AT DC 500V)

PRI	TO	SEC	100 M Ω MIN.
PRI	TO	CORE	100 M Ω MIN.
SEC	TO	CORE	100 M Ω MIN.

IMPULSE TEST: 1200Vo-P(5-3)

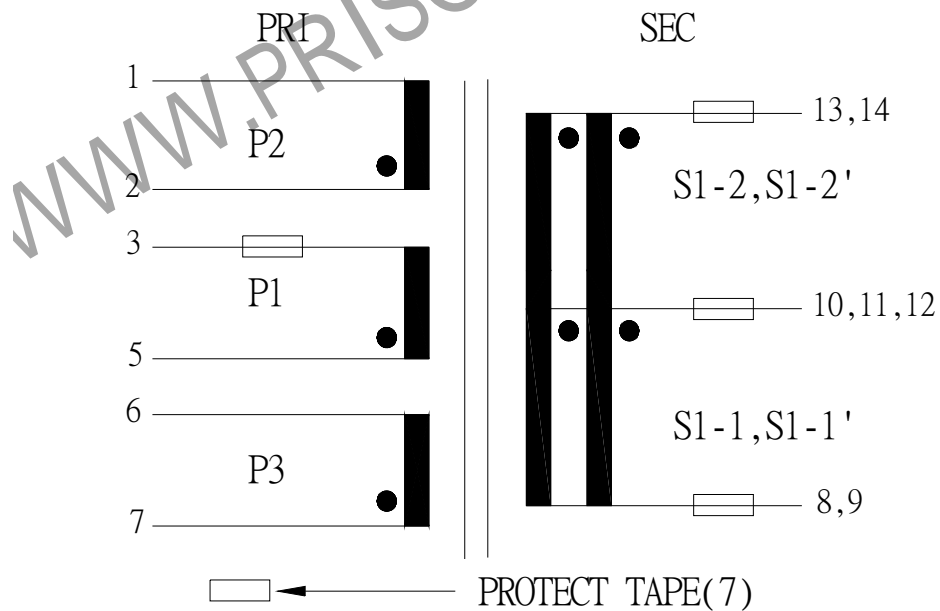
REPORT BY	CHECK BY	APPROVED BY	CUSTOMER :	DATE
			PART NO : 54P-17008	REV NO.
			ISSUE NO :	PAGE
				4 - 2

4. WINDING SEQUENCE:



P1, P2, P3 WINDING FROM PIN 1-7 SIDE
 S1-1 , S1-2, S1-1', S1-2' WINDING FROM PIN 8-14 SIDE

5. SCHEMATIC:



REPORT BY	CHECK BY	APPROVED	CUSTOMER :	DATE
			PART NO : 54P-17008	REV NO.
			ISSUE NO :	PAGE 4 - 3

6 . MATERIALS LIST :

NO	DESCRIPTION	ITEM	MATERIAL	LIST OF SAMPLE	UL NO.	MANUFACTURE
1	BOBBIN	(1)	PHENOLIC (PM9820) Thickness:0.30mm Min.	√	E41429	SUMITOMO
2	PIN	(2)	TINNED C.P WIRE φ1.0	√		WELL FORE
3	CASE	(3)	PET FR530 Thickness:0.40mm Min.	√	E41938	E I DUPONT
4	CORE	(4)	FERRITE CORE ETD44/45/15 TP4D CORE GAP : 0.56mm	√		TDG
5	COPPER WIRE	(5)	POLYURETHANE (2UEW) TYPYU-130 MW75-C	√	E197768	HENG YA
6	MYLAR TAPE	(6)	POLYESTER FILM #1318Y-1	√	E17385	3M
7	PROTECT TAPE	(7)	COMPOSITE FILM #44-A	√	E17385	3M
8	EPOXY		6020H	√	E229633	WELLS
9	VARNISH		TVB2180T	√	E83702	KYOCERA

REPORT BY	CHECK BY	APPROVED BY	CUSTOMER :	DATE	
			PART NO : 54P-17008	REV NO.	
			ISSUE NO :	PAGE	4 - 4