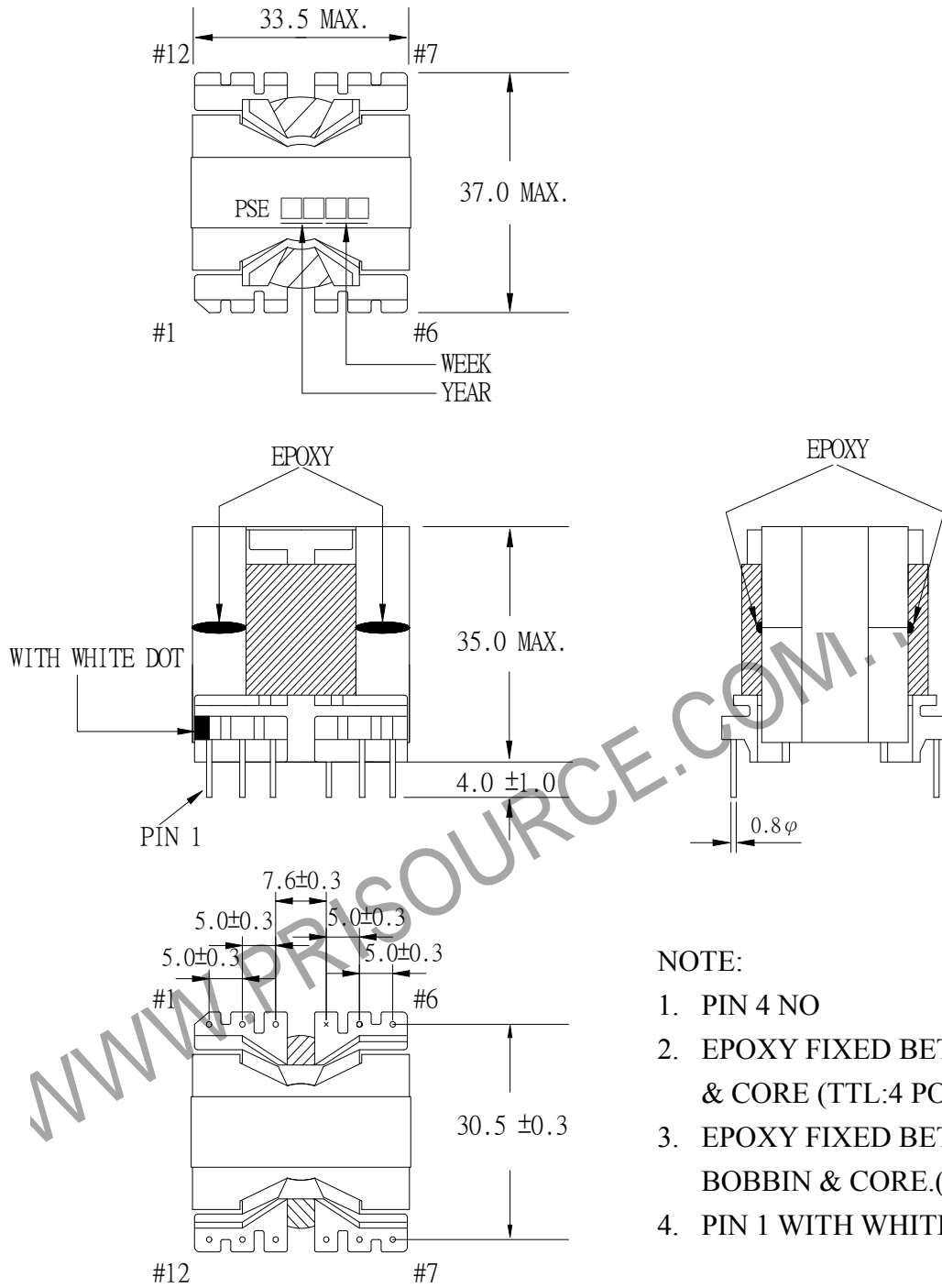


1. MECHANICAL & ASSEMBLY :



NOTE:

1. PIN 4 NO
2. EPOXY FIXED BETWEEN CORE & CORE (TTL:4 POINTS).
3. EPOXY FIXED BETWEEN BOBBIN & CORE.(ONE POINT).
4. PIN 1 WITH WHITE DOT

UNIT:m/m

PREPORT	BY	CHECK	BY	APPROVED	BY	CUSTOMER :	DATE	
						PART NO : 54P-16001	REV NO.	
						ISSUE NO :	PAGE	4 - 1

2. WINDING CONFIGURATION :

STEP	WINDING	MARGIN TAPE	START-FINISH	COPPER WIRE	TURNS	LAYER TUBE	METHOD
1	P1		3 - 1	φ0.12/60	9	1T	SPACE
2	P2		1 - 5	φ0.12/60	9	1T	SPACE
3	P3		6 - 2	φ0.26	4	1T	SPACE
4	S1		12 - 11	TEX-E φ0.5×2	5	1PC	SPACE
5	S2		11 - 10	TEX-E φ0.5×2	5	1T	SPACE
6	S3		9 - 8	TEX-E φ0.5	4	1PC	SPACE
7	S4		8 - 7	TEX-E φ0.5	4	2Ts	SPACE

3. ELECTRICAL CHARACTERISTICS :

PIN NO.	INDUCTANCE 1 KHz, 1 Vrms	Q 值 100KHz, 1Vrms	VOLTAGE RATIO(V) f= 20KHz	DCR (MAX) AT 25°C
3 - 5	75.0uH±10%	247 MIN	INPUT 1 Vrms	36.5 mΩ
3 - 1			0.4970Vrms±4.0%	17.5 mΩ
6 - 2			0.2245Vrms±4.0%	126.0mΩ
12 - 11			0.2743Vrms±4.0%	22.0 mΩ
11 - 10			0.2839Vrms±4.0%	22.5 mΩ
9 - 8			0.2199Vrms±4.0%	37.5 mΩ
8 - 7			0.2270Vrms±4.0%	40.5 mΩ
1 - 5			0.5033Vrms±3.0%	20.0 mΩ

HI-POT TEST : (AT 1 mA, 1 SEC)

PRI. TO SEC. 1800 VAC

PRI,SEC TO CORE 1800 VAC

SEC. TO SEC. 1800 VAC

INSULATION RESISTANCE: (AT DC 500V)

PRI. TO SEC. 100 MΩ ≧ .

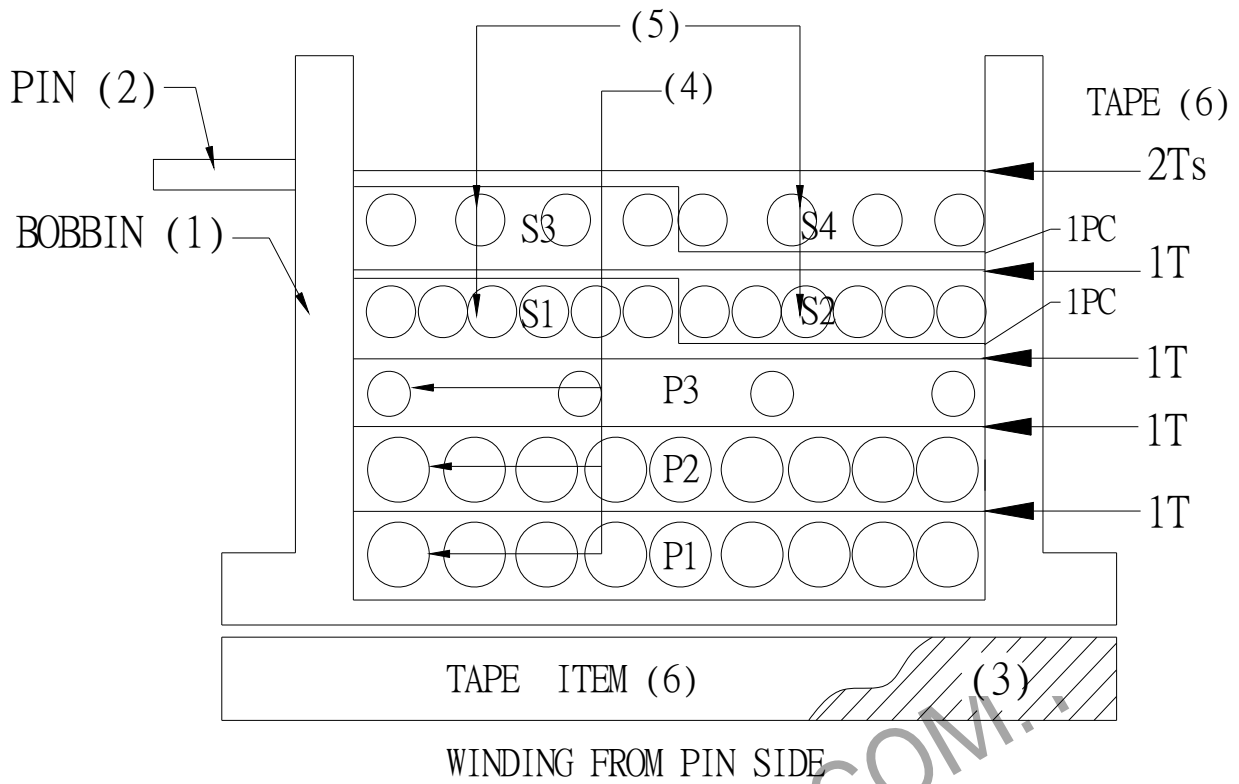
PRI,SEC TO CORE 100 MΩ ≧ .

SEC. TO SEC. 100 MΩ ≧ .

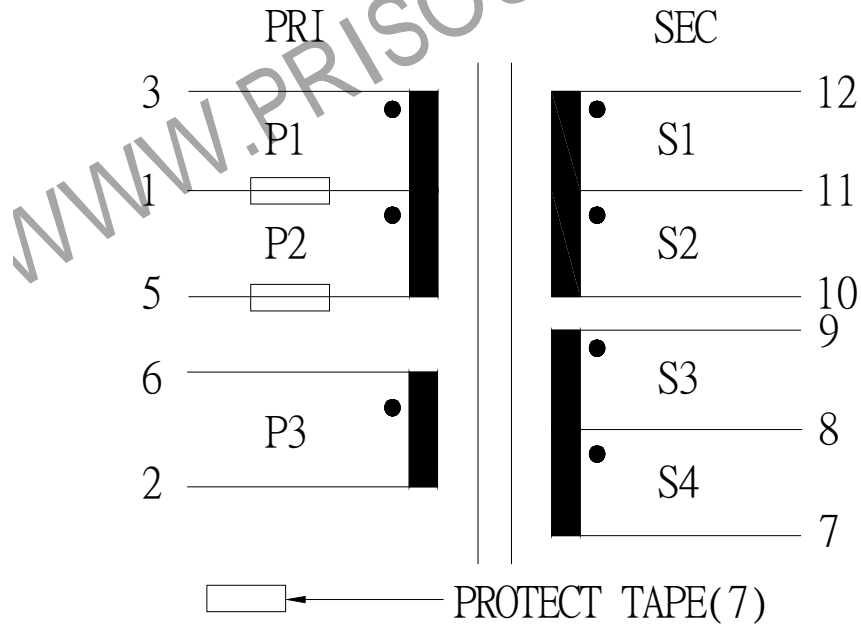
PRI. TO PRI. 100 MΩ ≧ .

REPORT BY	CHECK BY	APPROVED BY	CUSTOMER :	DATE	
			PART NO : 54P-16001	REV NO.	
			ISSUE NO :	PAGE	4 - 2

4. WINDING SEQUENCE:



5. SCHEMATIC:



REPORT BY	CHECK BY	APPROVED BY	CUSTOMER :	DATE	
			PART NO : 54P-16001	REV NO.	
			ISSUE NO :	PAGE	4 - 3

6. MATERIALS LIST :

NO	DESCRIPTION	ITEM	MATERIAL	LIST OF SAMPLE	UL NO.	MANUFACTURE
1	BOBBIN	(1)	PHENOLIC (PM9820) Thickness:0.60 mm Min. YW-865	√	E41429	SUMITOMO
2	PIN	(2)	TINNED COPPER WIRE φ 0.8	√		YIH HWA WELL FORE
3	CORE	(3)	FERRITE CORE PQ32/30 TP4A	√		TDG
4	COPPER WIRE	(4)	POLYURETHANE(1UEW) MW75-C TYPYU-130	√	E197768	HENG YA
5	COPPER WIRE	(5)	TEX-E	√	E206440	FURUKAWA
6	MYLAR TAPE	(6)	POLYESTER FILM #1351Y-1	√	E17385	3M
7	PROTECT TAPE	(7)	COMPOSITE FILM #44-A	√	E17385	3M
8	EPOXY		6020H	√	E229633	WELLS
9	VARNISH		TVB2180T	√	E83702	KYOCERA

REPORT BY	CHECK BY	APPROVED BY	CUSTOMER :	DATE	
			PART NO : 54P-16001	REV NO.	
			ISSUE NO :	PAGE	4 - 4