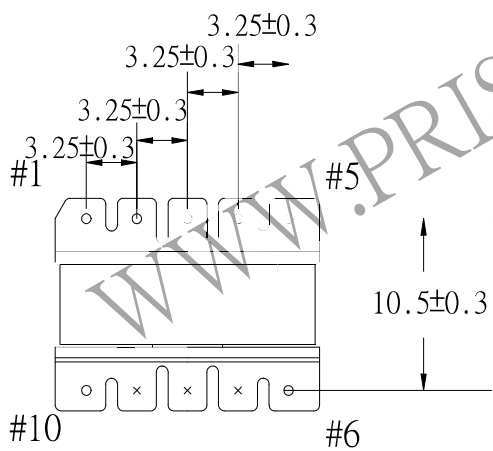
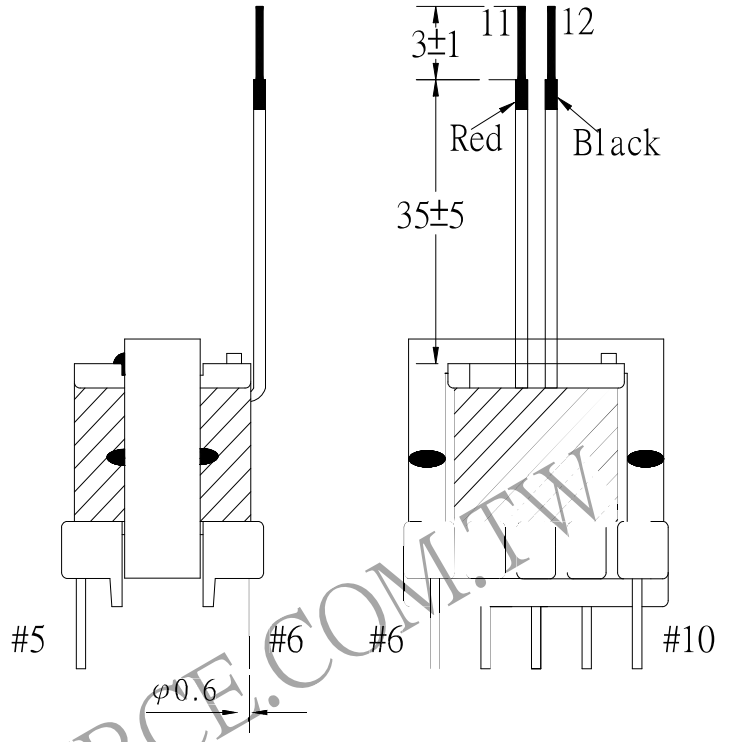
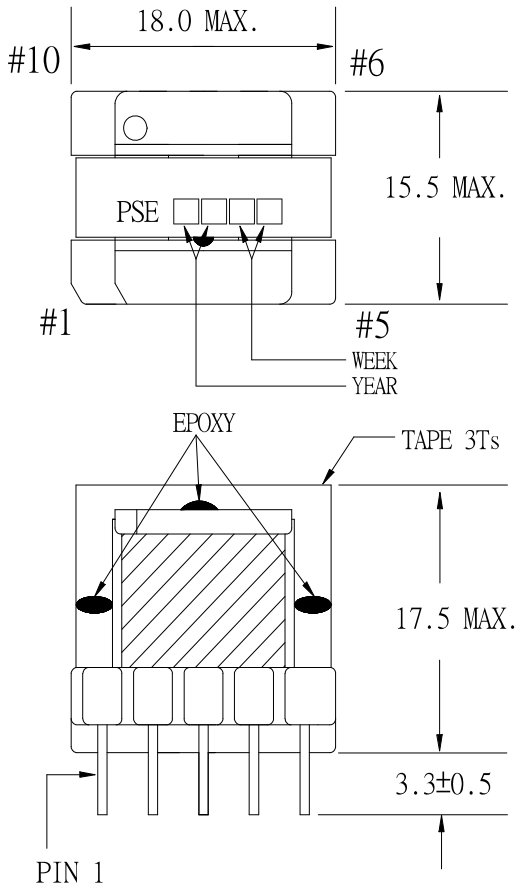


1. MECHANICAL & ASSEMBLY :



NOTE:

1. EPOXY FIXED BETWEEN E CORE & I CORE (TTL:4 POINTS).EPOXY FIXED TOP OF BOBBIN & CORE.(ONE POINT AT PIN1-5 SIDE).
2. PIN 7,8,9 NO.
3. PIN 1 ,PIN 3,PIN 4 ,PIN 5 WIRE WRAPING : 2Ts Min.

UNIT:m/m

REPORT BY	CHECK BY	APPROVED BY	CUSTOMER :	DATE	
			PART NO : 54P-15112	REV NO.	
			ISSUE NO :	PAGE	4 - 1

2. WINDING CONFIGURATION:

STEP	WINDING	MARGIN TAPE	START-FINIS	COPPER WIRE	TURNS	LAYER TAPE	TUBE	METHOD
1	NP1	1.5mm/1.5mm×2Ts	3 - 1	0.16φ	42	2Ts	#28/#28	CLOSE
2	NS1		11 - 12	TEX-E 0.50φ	20	2Ts		CLOSE
3	NB1	1.5mm/1.5mm×1T	4 - 5	0.16φ	20	2Ts	#28/#28	CLOSE

NOTE:

3. ELECTRICAL CHARACTERISTICS:

PIN NO.	INDUCTANCE 1.0KHz, 1.0Vrms	LEAKAGE INDUCTANCE KHz, Vrms	VOLTAGE RATIO(V) F= 20KHz	DCR MAX. AT 25°C
3 - 1	280.0uH ±15%		INPUT 1Vrms	1.15 Ω
4 - 5			0.4710 Vrms±3.0%	0.80 Ω
11 - 12			0.4732 Vrms±3.0%	85.0mΩ

HI-POT TEST :(AT 1mA, 3 SEC.)

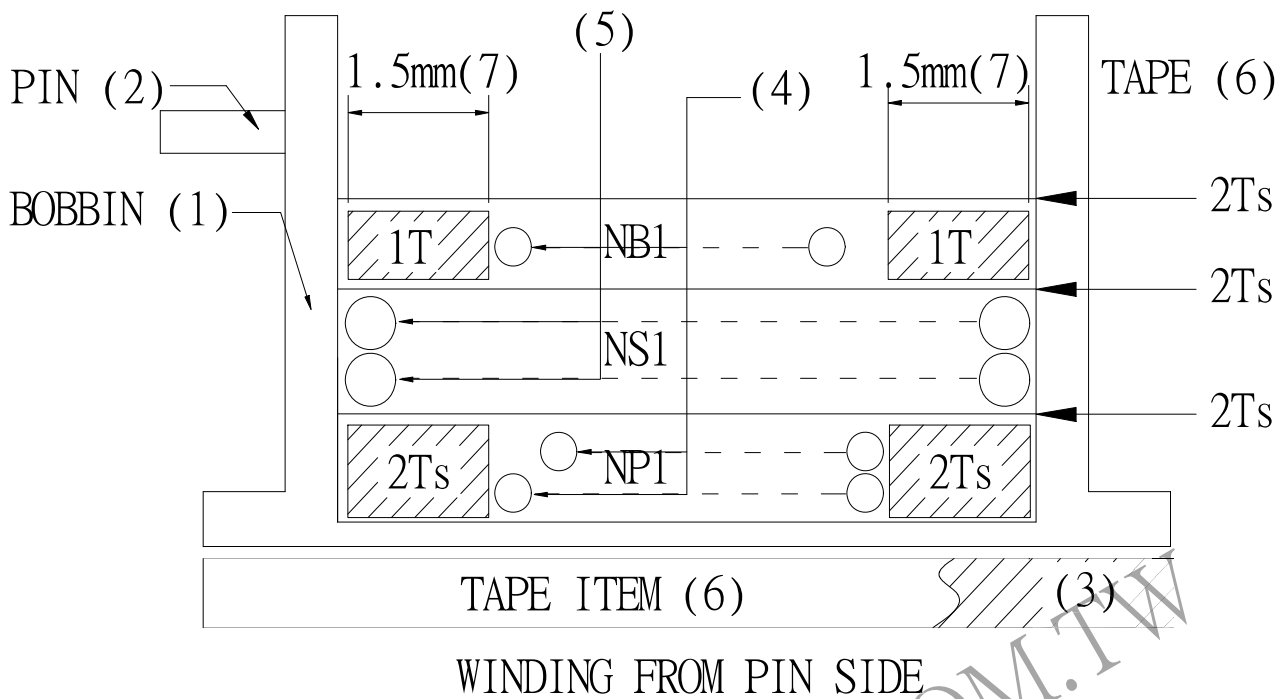
PRI. TO SEC. 3600 VAC
 SEC TO CORE 3600 VAC
 PRI TO CORE 3600 VAC

INSULATION RESISTANCE:(AT DC 500V)

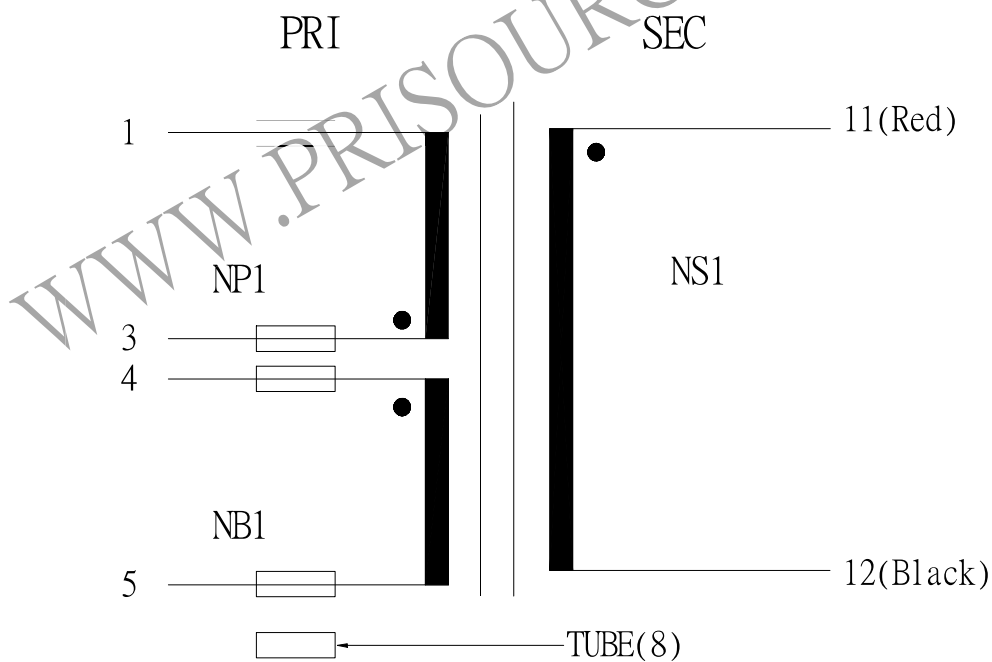
PRI. TO SEC. 50 MΩ MIN.
 SEC. TO CORE 50 MΩ MIN.
 PRI. TO CORE 50 MΩ MIN.

REPORT BY	CHECK BY	APPROVED BY	CUSTOMER :	DATE
			PART NO : 54P-15112	REV NO.
			ISSUE NO :	PAGE 4 - 2

4. WINDING SEQUENCE:



5. SCHEMATIC:



REPORT BY	CHECK BY	APPROVED BY	CUSTOMER :	DATE
			PART NO : 54P-15112	REV NO.
			ISSUE NO :	PAGE
				4 - 3