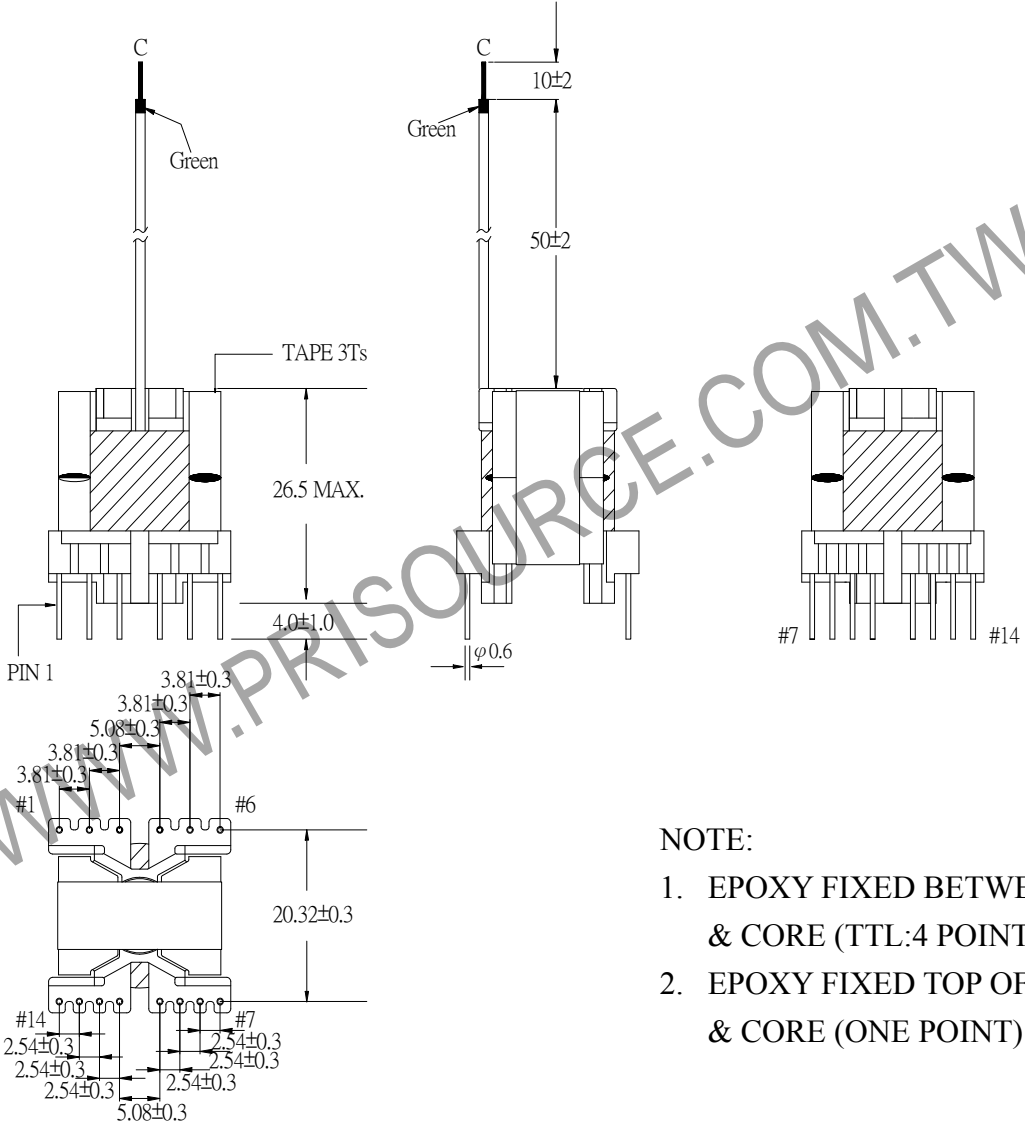
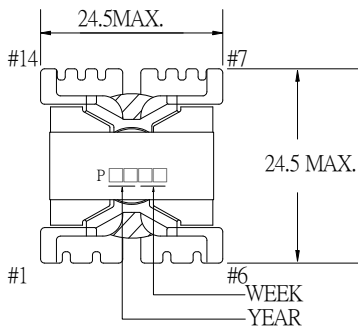


1.MECHANICAL & ASSEMBLY:



NOTE:

1. EPOXY FIXED BETWEEN CORE & CORE (TTL:4 POINTS)
2. EPOXY FIXED TOP OF BOBBIN & CORE (ONE POINT)

UNIT : mm

REPORT BY	CHECK BY	APPROVED BY	CUSTOMER :	DATE
			PART NO : 54P-15096	REV NO.
			ISSUE NO :	PAGE
				4 - 1

2. WINDING CONFIGURATION :

STEP	WINDING	MARGIN TAPE	START-FINISH	COPPER WIRE	TURNS	LAYER TAPE	TUBE	METHOD
1	A	2.0mm/2.0mm×3Ts	6 - 4	0.14φ	201	1T	0.6φ	CLOSE
2	F	2.0mm/2.0mm×2Ts	3 - 1	0.40φ	17	3Ts	0.6φ	CLOSE
3	SHIELD	2.0mm/2.0mm×1T	C -	t0.025×7	1	1T	0.6φ	Center
4	C	~2.0mm×1T	11 - 12	0.40φ	6	1T		CLOSE
5	B	2.0mm/~×1T	13 - 14	0.40φ	6	1T		CLOSE
6	E	~2.0mm×1T	7 - 8	0.40φ	7	1T		CLOSE
7	D	2.0mm/~×1T	9 - 10	0.40φ	6	2Ts		CLOSE

NOTE:

3. ELECTRICAL CHARACTERISTICS :

PIN NO.	INDUCTANCE 1.0 KHz, 1.0Vrms	LEAKAGE INDUCTANCE KHz, mVrms	VOLTAGE RATIO(V) f= 20KHz INPVT 1Vrms	DCR MAX AT 25°C
6 - 4	8.464mH ±10%			10.5 Ω
3 - 1			0.0848Vrms±5%	125.0mΩ
11 - 12			0.0296Vrms±7%	55.0mΩ
13 - 14			0.0300Vrms±7%	60.0mΩ
7 - 8			0.0345Vrms±7%	70.0mΩ
9 - 10			0.0300Vrms±7%	62.0mΩ

HI-POT TEST : (AT 1 mA, 2 SEC.)

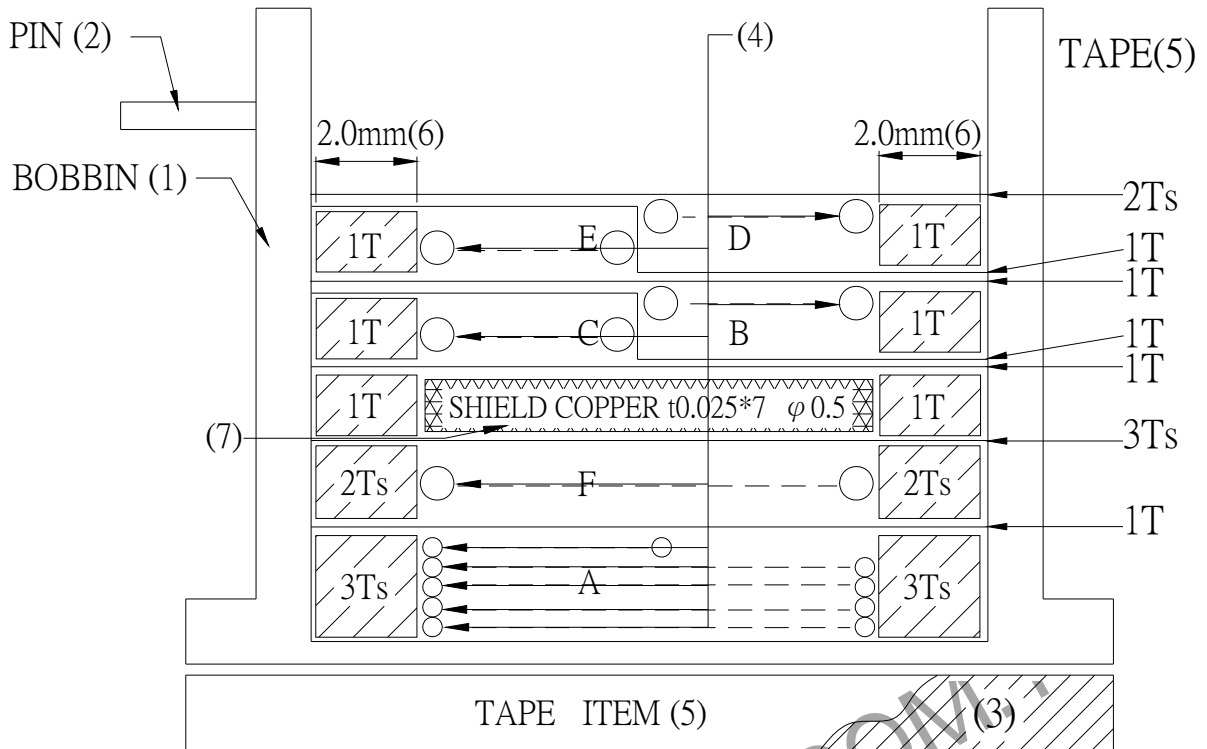
PRI TO SEC 2640VAC

INSULATION RESISTANCE: (AT DC 500V)

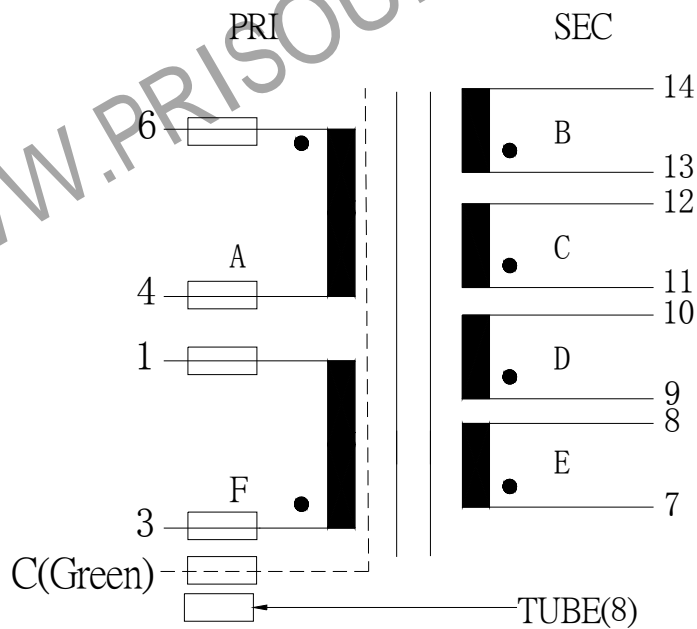
PRI TO SEC 100 MΩ MIN.

REPORT BY	CHECK BY	APPROVED BY	CUSTOMER :	DATE	
			PART NO : 54P-15096	REV NO.	
			ISSUE NO :	PAGE	4 - 2

4. WINDING SEQUENCE:



5. SCHEMATIC:



REPORT BY	CHECK BY	APPROVED BY	CUSTOMER :	DATE	
			PART NO : 54P-15096	REV NO.	
			ISSUE NO :	PAGE	4 - 3

6 . MATERIALS LIST :

NO	DESCRIPTION	ITEM	MATERIAL	LIST OF SAMPLE	UL NO.	MANUFACTURE
1	BOBBIN	(1)	PHENOLIC (T375J) Thickness:0.80 mm Min.	√	E59481	CHANG CHUN
2	PIN	(2)	TINNED C.P WIRE 0.6 φ	√		
3	CORE	(3)	FERRITE CORE PQ2020 TP4	√		TDG
4	COPPER WIRE	(4)	POLYURETHANE (2UEW) TYPU-130 MW75-C	√	E197768	HENG YA
5	MYLAR TAPE	(5)	POLYESTER FILM #1318-1(Y)	√	E17385	3M
6	MARGIN TAPE	(6)	COMPOSITE FILM #44D-A	√	E17385	3M
7	COPPER FOIL	(7)	t0.025x7	√		
8	TUBE	(8)	SILICON TUBE RSU-1	√	E67922	NISSEI
9	EPOXY		6020H	√	E229633	WELLS
10	VARNISH		TVB2180T	√	E83702	KYOCERA

REPORT BY	CHECK BY	APPROVED BY	CUSTOMER :	DATE	
			PART NO : 54P-15096	REV NO.	
			ISSUE NO :	PAGE	4 - 4