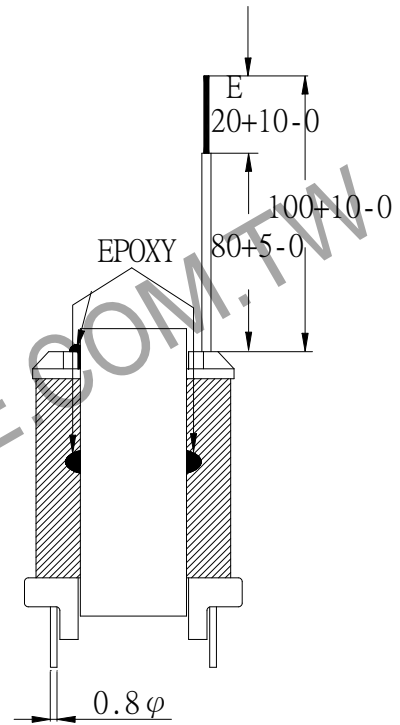
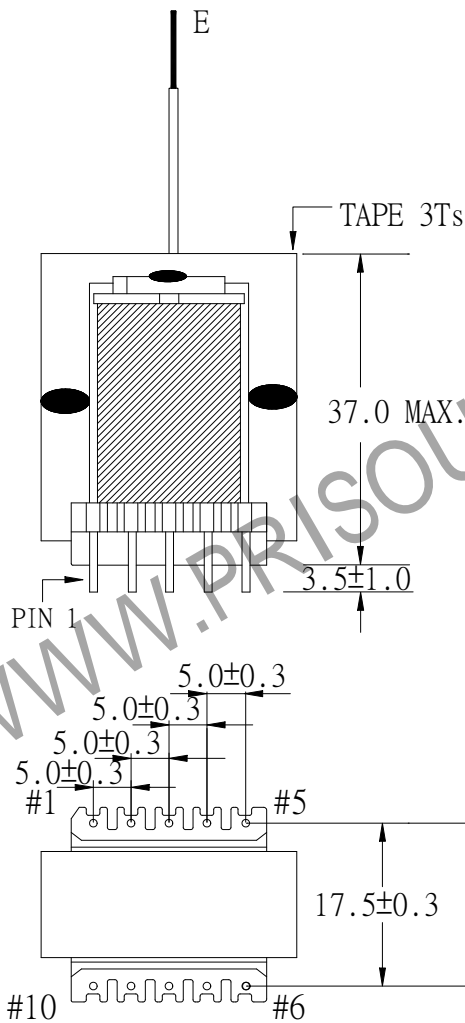
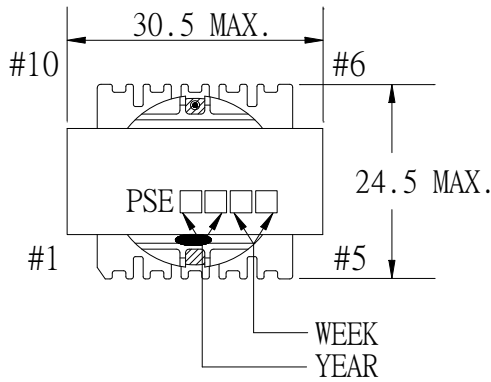


1. MECHANICAL & ASSEMBLY :



NOTE:

- CORE與CORE接合處點膠固定共四點,CORE與BOBBIN頂部(PIN1-5側)接合處點膠固定,共一點.

UNIT : m/ m

REPORT BY	CHECK BY	APPROVED BY	CUSTOMER :	DATE	
			PART NO : 54P-15059	REV NO.	
			ISSUE NO :	PAGE	4 - 1

2. WINDING CONFIGURATION :

STEP	WINDING	MARGIN TAPE	START-FINIS	COPPER WIRE	TURNS	LAYER TAPE	TUBE	METHOD
1	N1A		5 - 4	0.10 ϕ /20C	25	3Ts		CLOSE
2	N3		SHIELD - E	t0.05x20	1	3Ts		CLOSE
3	N2	2.0/2.0mmx2Ts	8 - 10	0.18 ϕ /20C	13	3Ts		CLOSE
4	N31		SHIELD - E	t0.05x20	1	3Ts		CLOSE
5	N1B		4 - 1	0.10 ϕ /20C	25	3Ts		CLOSE

NOTE:

3. ELECTRICAL CHARACTERISTICS :

PIN NO.	INDUCTANCE 1 KHz, 1Vrms	LEAKAGE INDUCTANCE KHz, Vrms	VOLTAGE RATIO(V) f= 20KHz	DCR MAX. AT 25°C
5 - 1	650.0uH \pm 10%			
5 - 4			INPUT 1Vrms	149.0m Ω
8 - 10			0.5192Vrms \pm 3.0%	31.0m Ω
4 - 1			1.0006Vrms \pm 3.0%	218.0m Ω

HI-POT TEST : (AT 1 mA, 2 SEC)

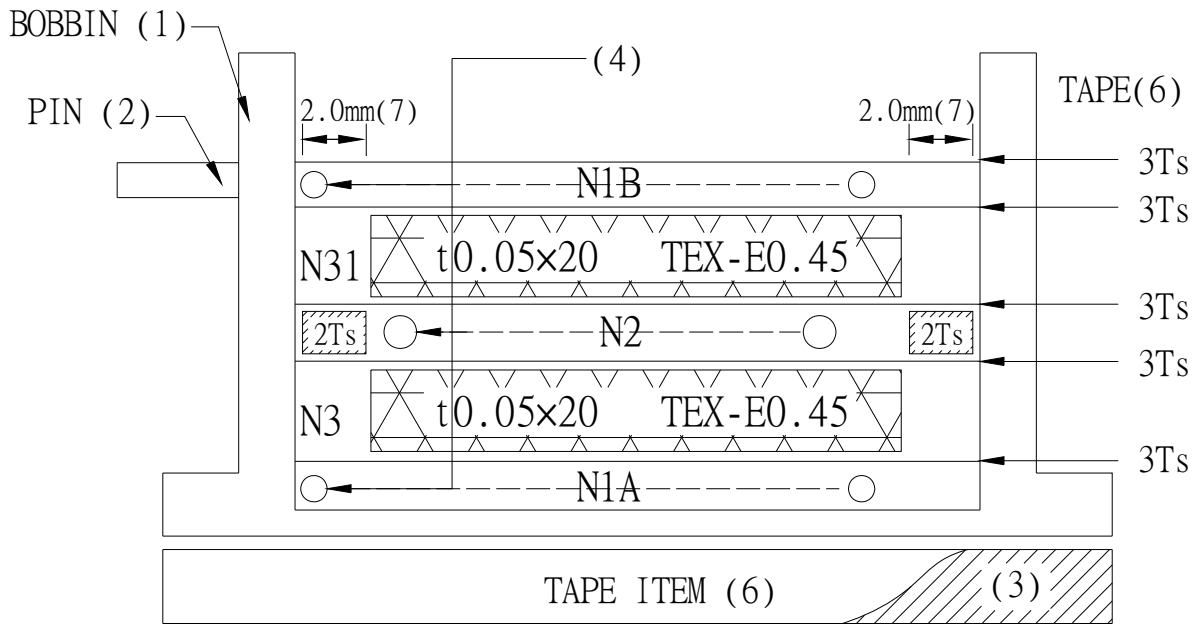
PRI TO CORE 2400 VAC
PRI TO SEC 2400 VAC

INSULATION RESISTANCE: (AT DC 500V)

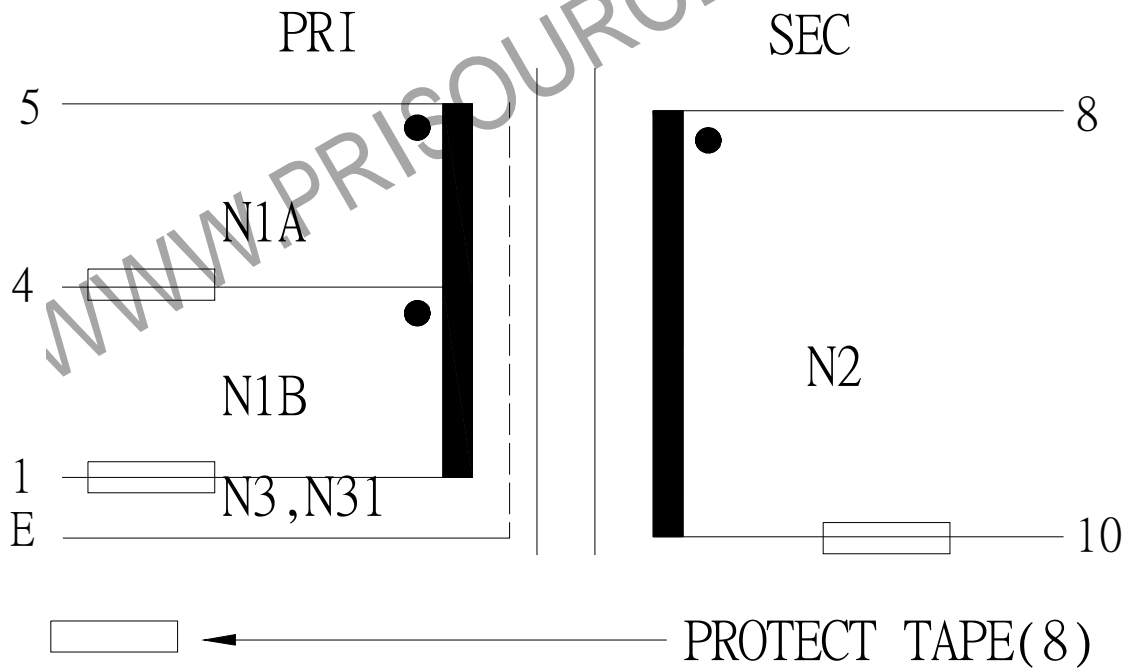
PRI TO CORE. 100 M Ω MIN
PRI TO SEC. 100 M Ω MIN

REPORT	BY	CHECK	BY	APPROVED	BY	CUSTOMER :	DATE
						PART NO : 54P-15059	REV NO.
						ISSUE NO :	PAGE 4 - 2

4. WINDING SEQUENCE:



5. SCHEMATIC:



REPORT BY	CHECK BY	APPROVED BY	CUSTOMER :	DATE
			PART NO : 54P-15059	REV NO.
			ISSUE NO :	PAGE 4 - 3

6. MATERIALS LIST :

NO	DESCRIPTION	ITEM	MATERIAL	LIST OF SAMPLE	UL NO.	MANUFACTURE
1	BOBBIN	(1)	PHENOLIC (PM9820) Thickness:0.30mm Min.	√	E41429	SUMITOMO
2	PIN	(2)	TINNED COPPER WIRE φ0.8	√		
3	CORE	(3)	FERRITE CORE	√		TDG
4	COPPER WIRE		EER28L TP4 POLYURETHANE (UEW) MW75-C TYPU-130	√	E197768	HENG YA
5	TRIPLE WIRE	(5)	TEX-E	√	E206440	FURUKAWA
6	MYLAR TAPE	(6)	POLYESTER FILM #1318-1 Y	√	E17385	3M
7	MARGIN TAPE	(7)	COMPOSITE FILM #44T-A	√	E17385	3M
8	PROTECT TAPE	(8)	COMPOSITE FILM #44-A	√	E17385	3M
9	COPPER FOIL		t0.05×20	√		TORAY
10	EPOXY		6020H	√	E229633	WELLS
11	VARNISH		WP-2952F-2G	√	E72979	HITACHI

REPORT BY	CHECK BY	APPROVED BY	CUSTOMER :	DATE
			PART NO : 54P-15059	REV NO.
			ISSUE NO :	PAGE 4 - 4