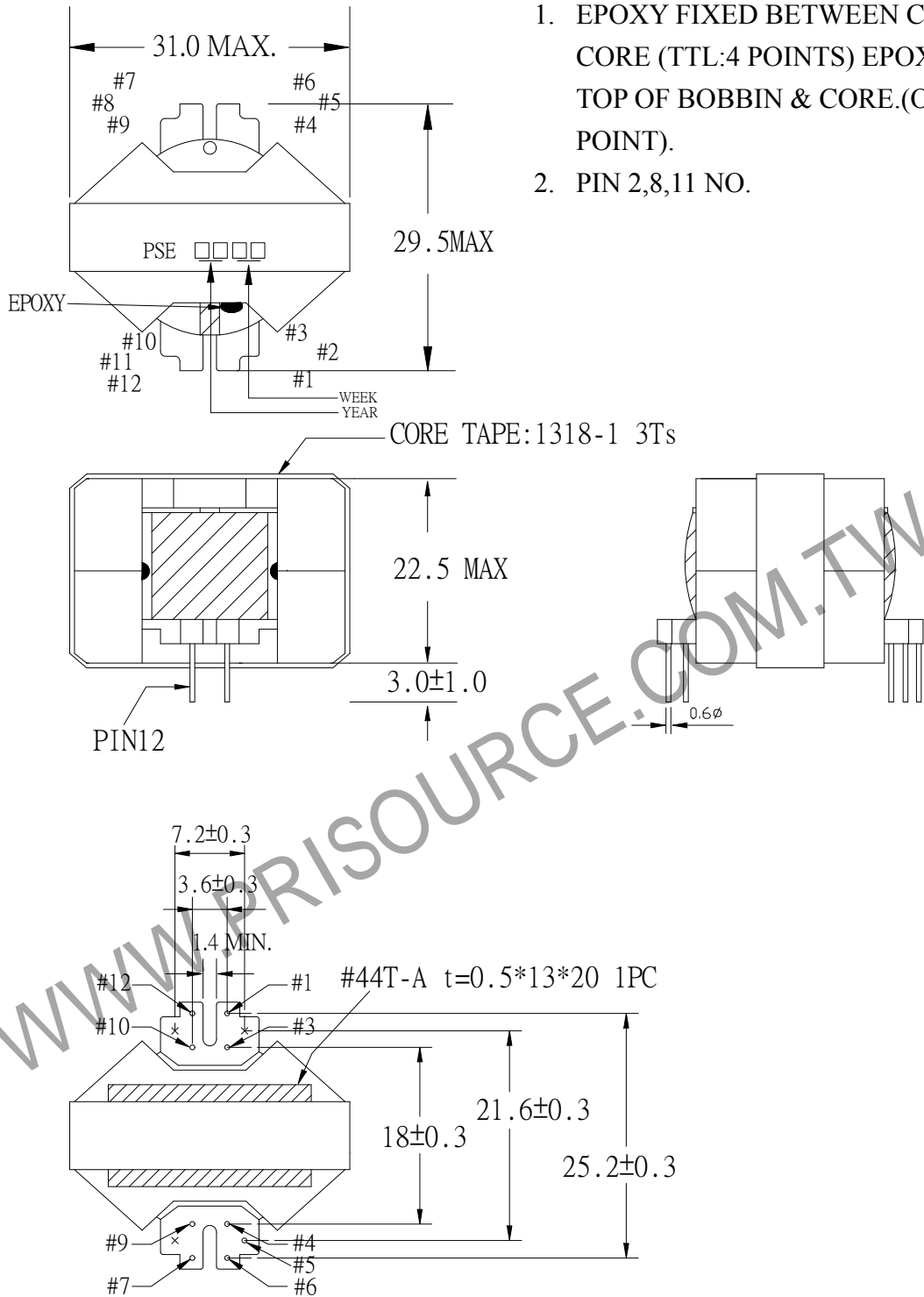


1. MECHANICAL & ASSEMBLY :

NOTE:

1. EPOXY FIXED BETWEEN CORE & CORE (TTL:4 POINTS) EPOXY FIXED TOP OF BOBBIN & CORE.(ONE POINT).
2. PIN 2,8,11 NO.



UNIT : mm

REPORT BY	CHECK BY	APPROVED BY	CUSTOMER :	DATE	
			PART NO : 54P-15049	REV NO.	
			ISSUE NO :	PAGE	4 - 1

2. WINDING CONFIGURATION :

STEP	WINDING	MARGIN TAPE	START-FINISH	COPPER WIRE	TURNS	LAYER TAPE	METHOD
1	P1		4 - 7	0.14 ϕ /22C	40	1T	CLOSE
2	S1	1.5mm/~x2Ts	12 - 1	TEX-E 0.30 ϕ	4	2Ts	CLOSE

NOTE:

3. ELECTRICAL CHARACTERISTICS :

PIN NO	INDUCTANCE 1.0 KHz, 1.0Vrms	LEAKAGE INDUCTANCE KHz, Vrms	VOLTAGE RATIO(V) f= 20KHz	DCR(MAX) AT 25°C
4 - 7	215uH \pm 10%		INPUT 1V	120.0 m Ω
12 - 1			0.0994Vrms \pm 5%	75.0 m Ω

HI-POT TEST : (AT 1 mA, 2 SEC.)

PRI TO SEC 600 VAC
PRI, SEC TO CORE 600 VAC

INSULATION TEST : (AT DC500V)

PRI TO SEC 100 M Ω MIN.
PRI, SEC TO CORE 100 M Ω MIN.

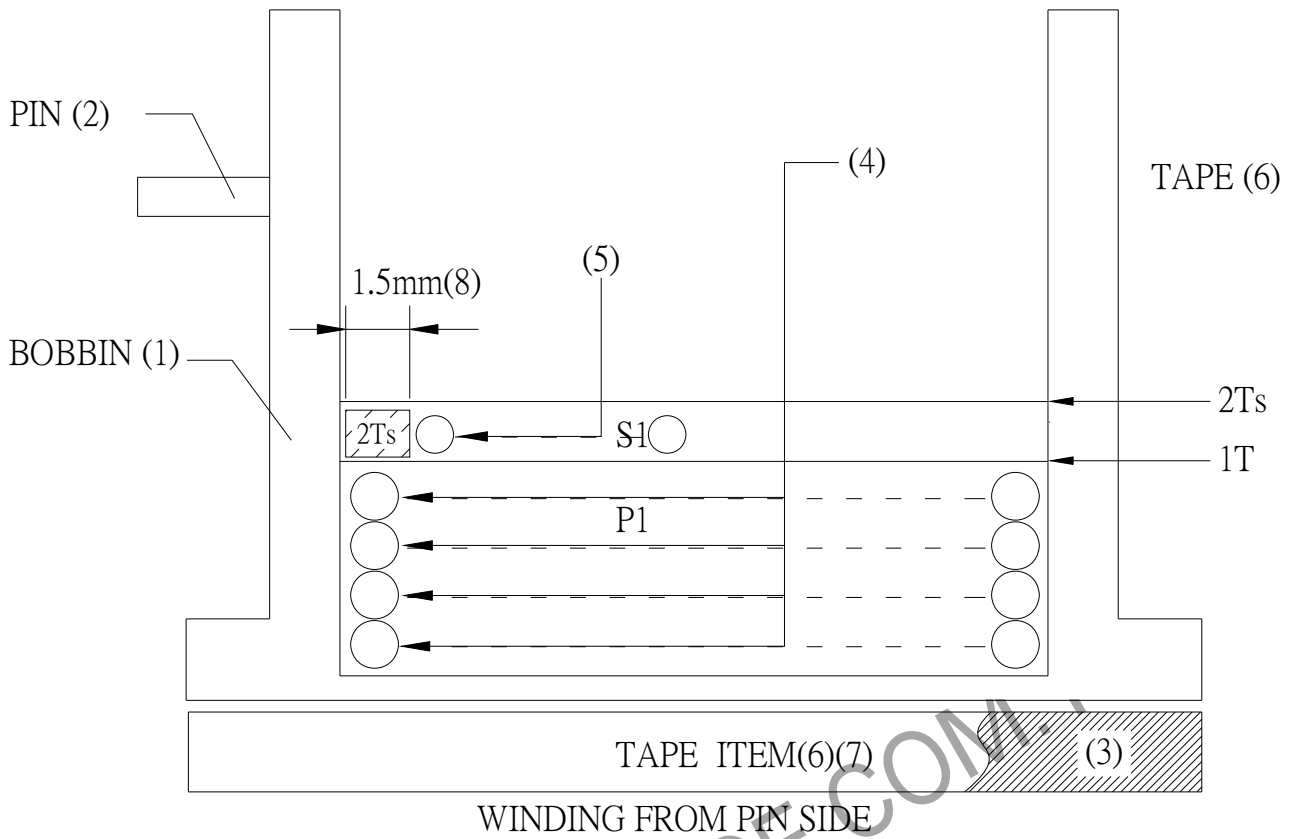
INSULATION CLASS : CLASS E

使用溫度範圍 : -25°C -120°C

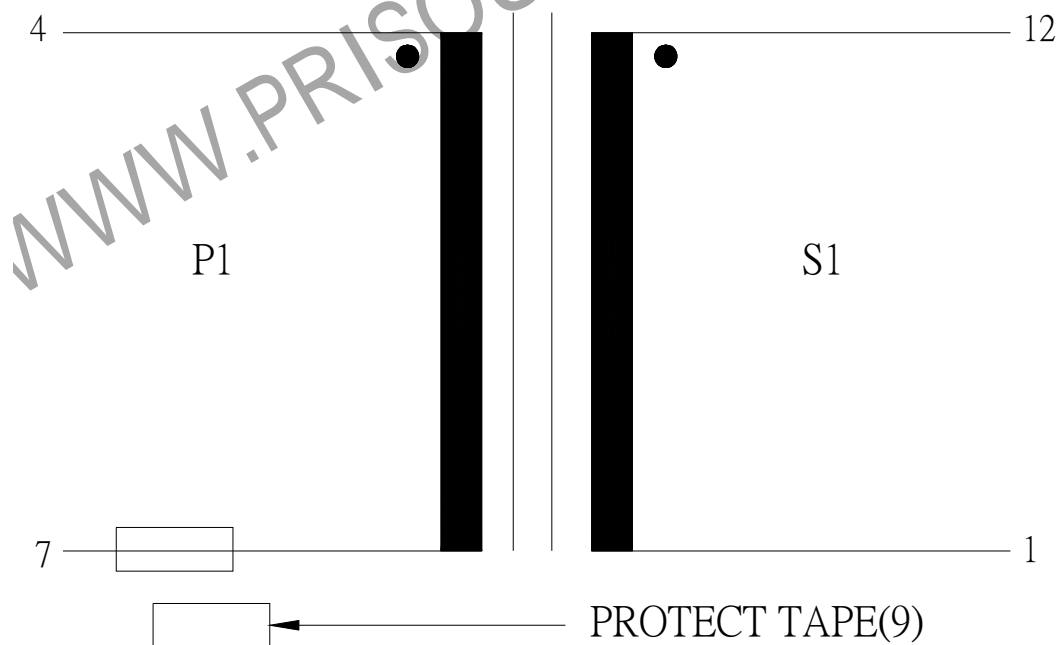
保存溫度範圍 : -40°C -85°C

REPORT BY	CHECK BY	APPROVED BY	CUSTOMER :	DATE
			PART NO : 54P-15049	REV NO.
			ISSUE NO :	PAGE 4 - 2

4. WINDING SEQUENCE:



5. SCHEMATIC:



REPORT BY	CHECK BY	APPROVED BY	CUSTOMER :	DATE	
			PART NO : 54P-15049	REV NO.	
			ISSUE NO :	PAGE	4 - 3

6. MATERIAL LIST :

NO.	DESCRIPTION	ITEM	MATERIAL	LIST OF SAMPLE	UL NO.	MANUFACTURER
1	BOBBIN	(1)	PHENOLIC(PM9630) Thickness:0.50mm Min.	✓	E41429	SUMITOMO
2	PIN	(2)	TINNED C.P WIRE ϕ 0.6	✓		WELL FORE
3	CORE	(3)	FERRITE CORE RM10 TP4	✓		TDG
4	COPPER WIRE	(4)	POLYURETHANE (2UEW) TYPY-130 MW75-C	✓	E197768	HENG YA
5	TRIPLE WIRE	(5)	TEX-E	✓	E206440	FURUKAWA
6	MYLAR TAPE	(6)	POLYESTER FILM #1318-1-Y	✓	E17385	3M
7	MARGIN TAPE	(7)	COMPOSITE FILM #44T-A	✓	E17385	3M
		(8)	COMPOSITE FILM #44D-A	✓	E17385	3M
8	PROTECT TAPE	(9)	COMPOSITE FILM #44-A	✓	E17385	3M
9	VARNISH		TVB2180T	✓	E83702	KYOCERA
10	EPOXY		6020H	✓	E229633	WELLS

REPORT BY	CHECK BY	APPROVED BY	CUSTOMER :	DATE
			PART NO : 54P-15049	REV NO.
			ISSUE NO :	PAGE
				4 - 4