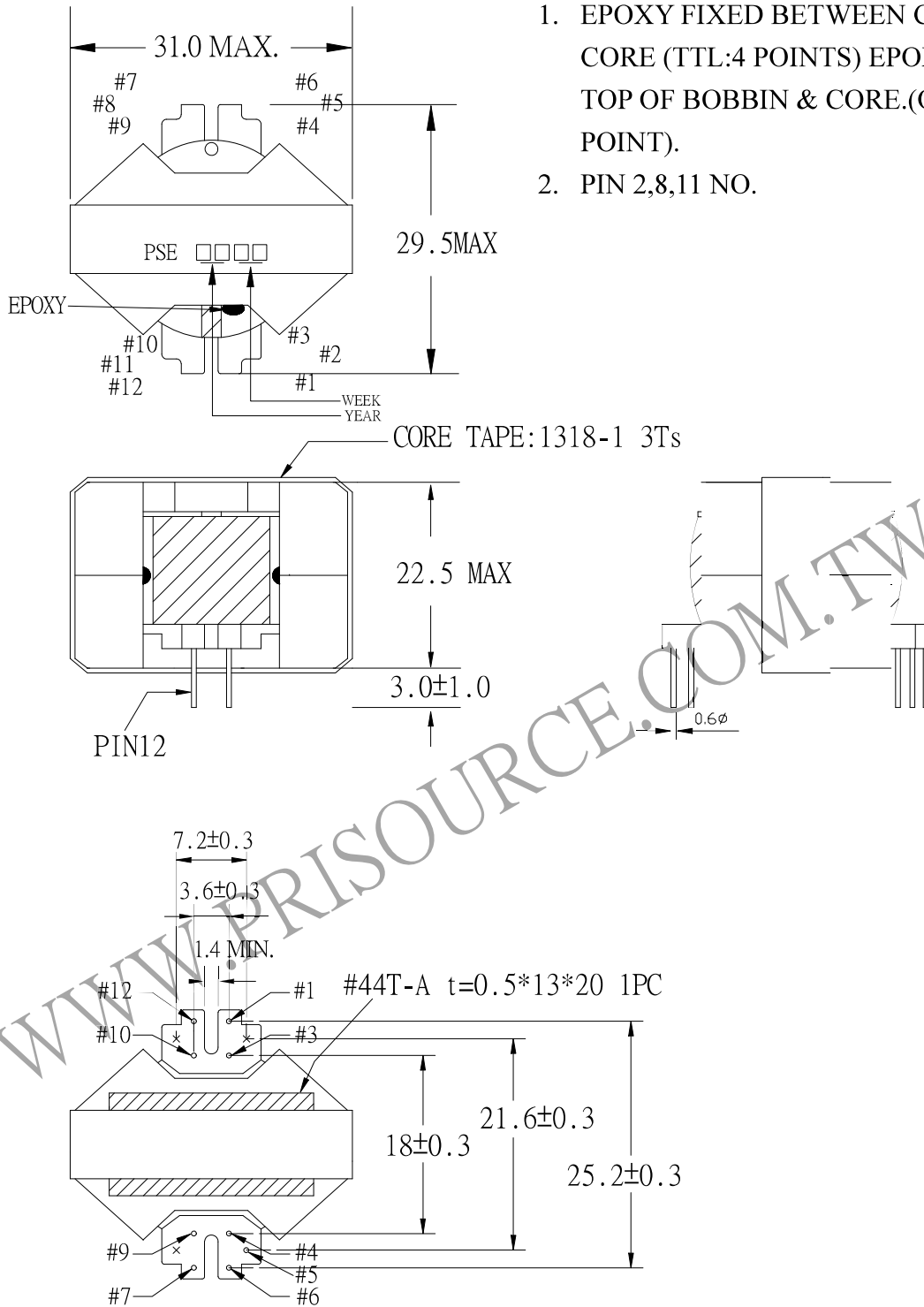


# 1. MECHANICAL & ASSEMBLY :

## NOTE:

1. EPOXY FIXED BETWEEN CORE & CORE (TTL:4 POINTS) EPOXY FIXED TOP OF BOBBIN & CORE.(ONE POINT).
2. PIN 2,8,11 NO.



UNIT : mm

REPORT BY	CHECK BY	APPROVED BY	CUSTOMER :	DATE	
			PART NO : 54P-15049	REV NO.	
			ISSUE NO :	PAGE	4 - 1

## 2. WINDING CONFIGURATION :

STEP	WINDING	MARGIN TAPE	START-FINISH	COPPER WIRE	TURNS	LAYER TAPE	METHOD
1	P1		4 - 7	0.14 $\phi$ /22C	40	1T	CLOSE
2	S1	1.5mm/~ $\times$ 2Ts	12 - 1	TEX-E 0.30 $\phi$	4	2Ts	CLOSE

NOTE:

## 3. ELECTRICAL CHARACTERISTICS :

PIN NO	INDUCTANCE 1.0 KHz, 1.0Vrms	LEAKAGE INDUCTANCE KHz, Vrms	VOLTAGE RATIO(V) f= 20KHz	DCR(MAX) AT 25°C
4 - 7	215uH $\pm$ 10%		INPUT 1V	120.0 m $\Omega$
12 - 1			0.0994Vrms $\pm$ 5%	75.0 m $\Omega$

HI-POT TEST : (AT 1 mA, 2 SEC.)

PRI TO SEC 600 VAC  
PRI, SEC TO CORE 600 VAC

INSULATION TEST : (AT DC500V)

PRI TO SEC 100 M $\Omega$  MIN.  
PRI, SEC TO CORE 100 M $\Omega$  MIN.

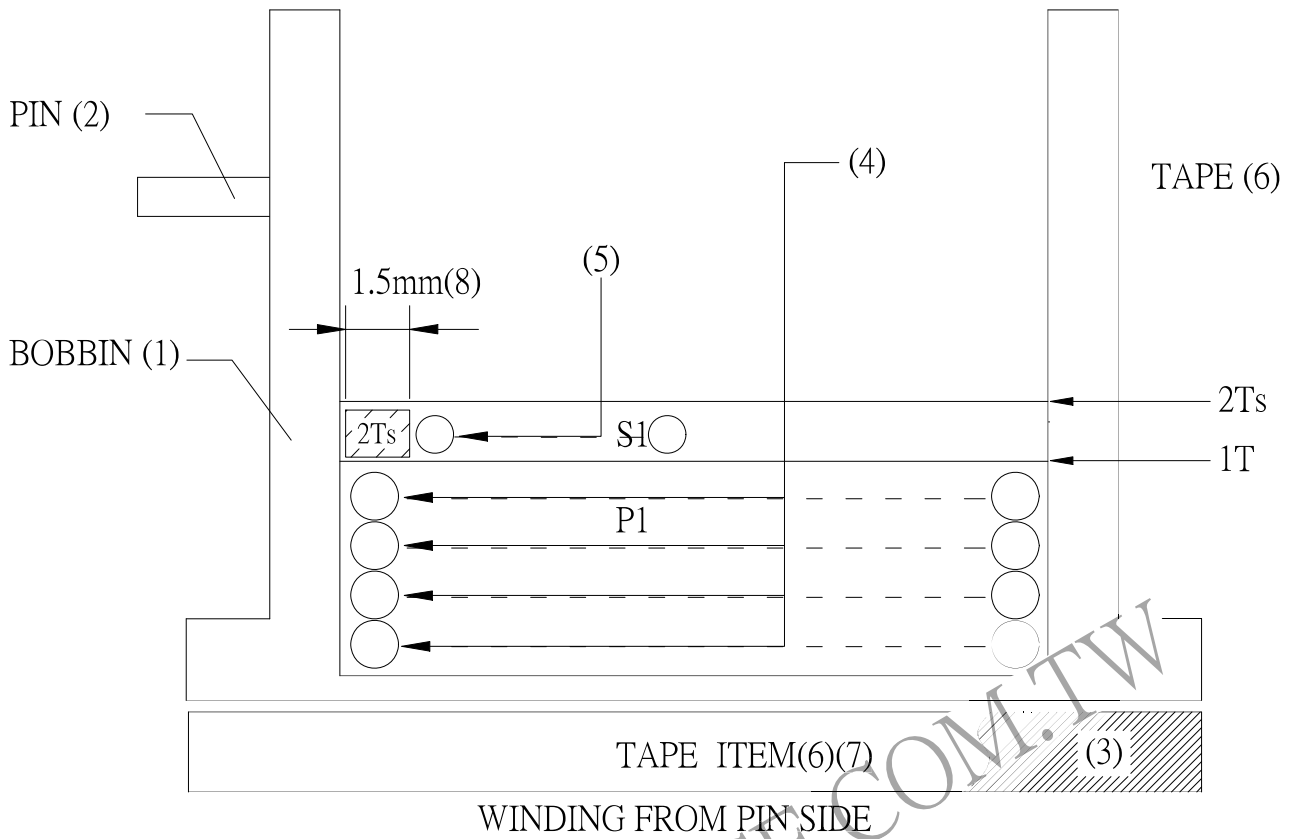
INSULATION CLASS : CLASS E

使用溫度範圍 : -25°C -120°C

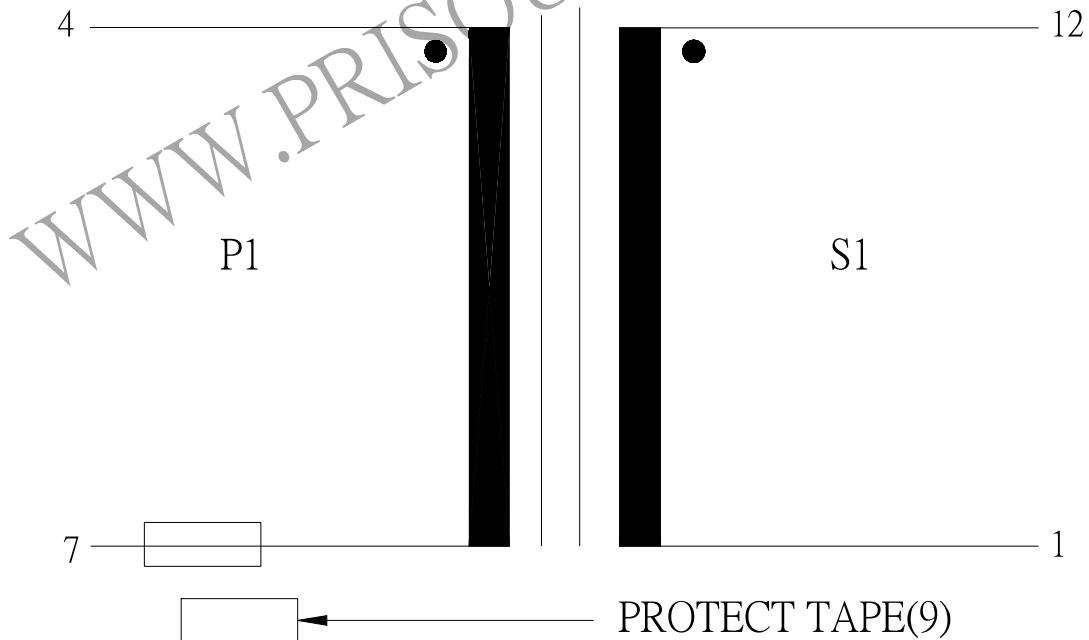
保存溫度範圍 : -40°C -85°C

REPORT BY	CHECK BY	APPROVED BY	CUSTOMER :	DATE
			PART NO : 54P-15049	REV NO.
			ISSUE NO :	PAGE 4 - 2

#### 4. WINDING SEQUENCE:



#### 5. SCHEMATIC:



REPORT BY	CHECK BY	APPROVED BY	CUSTOMER :	DATE
			PART NO : 54P-15049	REV NO.
			ISSUE NO :	PAGE
				4 - 3