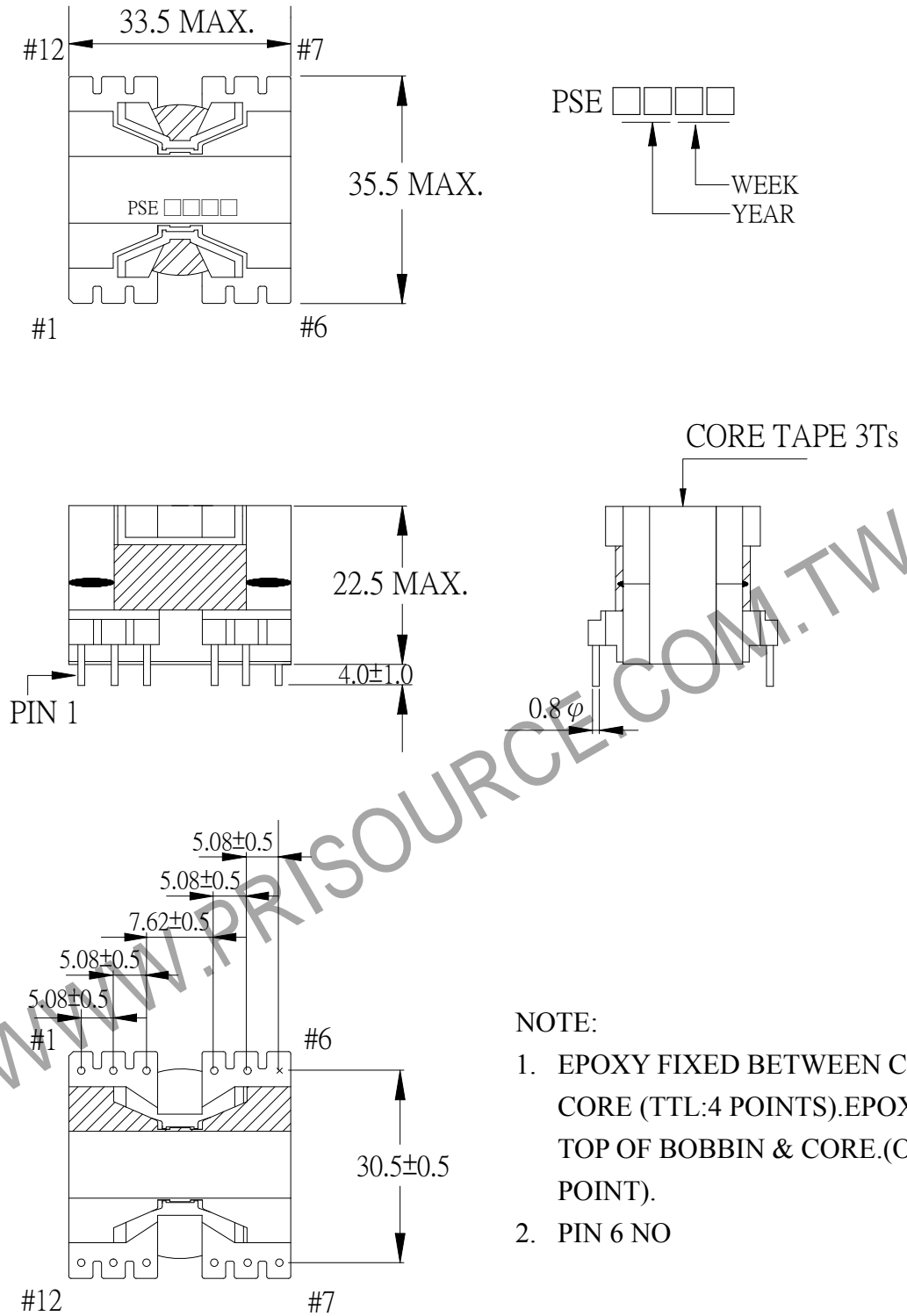


# 1. MECHANICAL & ASSEMBLY :



**NOTE:**

1. EPOXY FIXED BETWEEN CORE & CORE (TTL:4 POINTS).EPOXY FIXED TOP OF BOBBIN & CORE.(ONE POINT).
2. PIN 6 NO

UNIT:m/m

REPORT BY	CHECK BY	APPROVED BY	CUSTOMER :	DATE	
			PART NO : 54P-14093	REV NO.	
			ISSUE NO :	PAGE	4 - 1

## 2. WINDING CONFIGURATION :

STEP	WINDING	MARGIN TAPE	START-FINISH	COPPER WIRE	TURNS	LAYER TAPE	TUBE	METHOD
1	P1		2 - 5	0.08 $\phi$ /80C	32	2Ts		CLOSE
2	N1		8 - 11	0.23 $\phi$	3	3Ts		SPACE

NOTE:

## 3. ELECTRICAL CHARACTERISTICS :

PIN NO.	INDUCTANCE 100.0 KHz, 0.3Vrms	LEAKAGE INDUCTANCE 100.0KHz, 1.0Vrms	VOLTAGE RATIO(V) F= 20KHz	DCR MAX. AT 25°C
2 - 5	165.0uH $\pm$ 10.0%		INPUT 1Vrms	105.0 m $\Omega$
8 - 11			0.0961Vrms $\pm$ 4.0%	125.0 m $\Omega$

HI-POT TEST :( AT 1 mA, 3SEC. )

PRI. SEC TO CORE. 1800 VAC

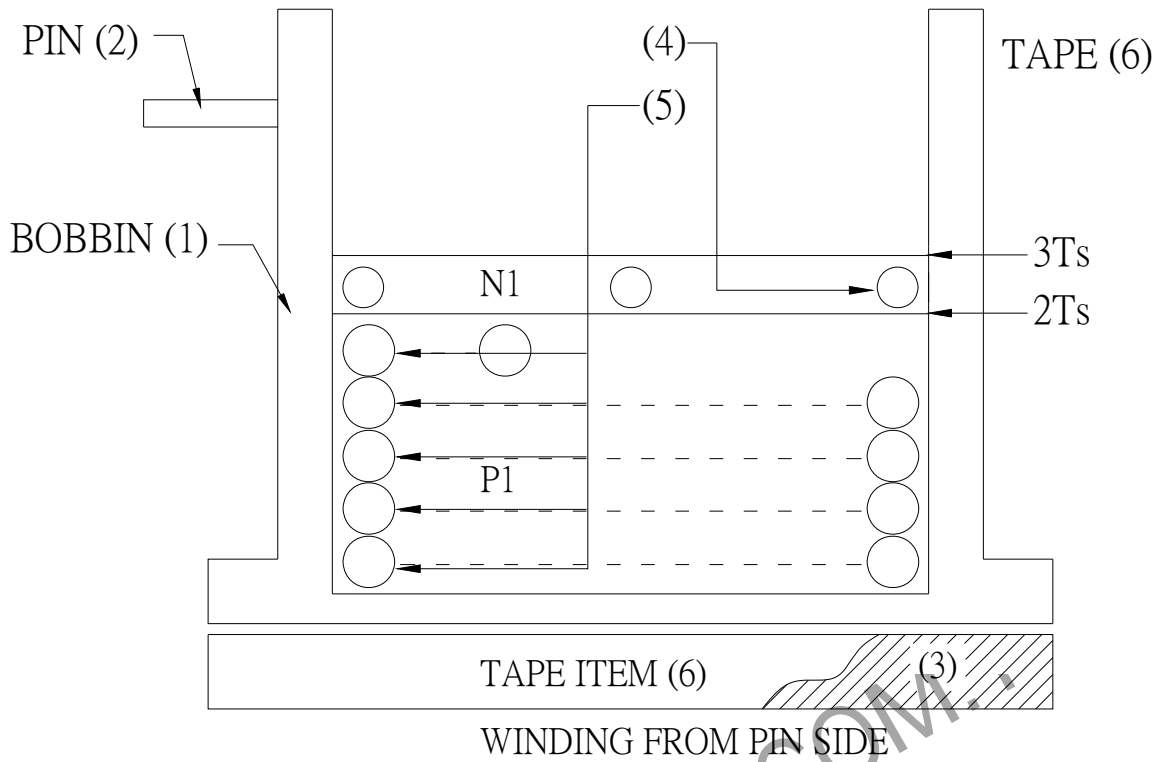
PRI. TO SEC. 1800 VAC

INSULATION RESISTANCE:(AT DC 500V)

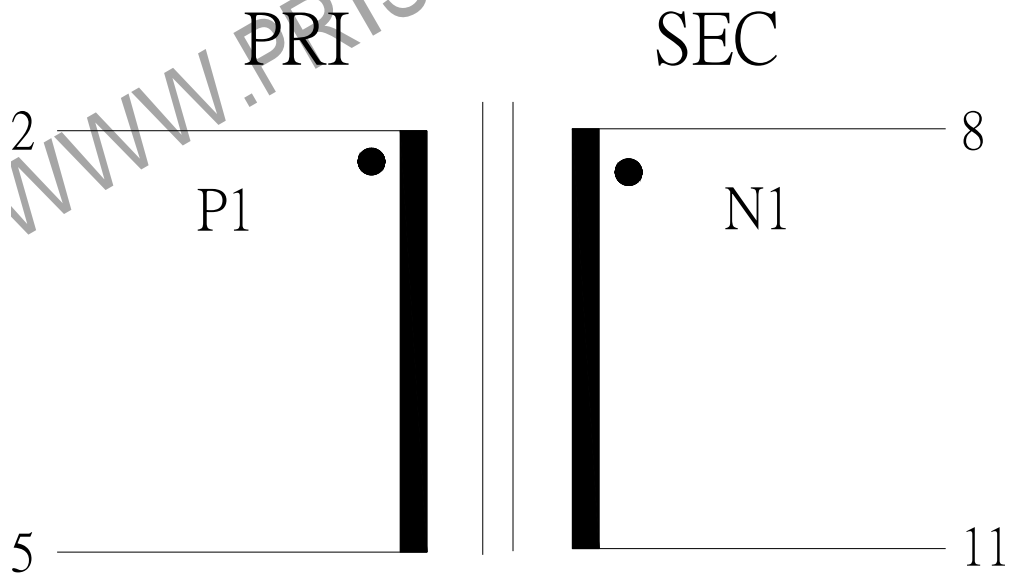
PRI. TO SEC. 1 M $\Omega$  MIN.

REPORT BY	CHECK BY	APPROVED BY	CUSTOMER :	DATE
			PART NO : 54P-14093	REV NO.
			ISSUE NO :	PAGE 4 - 2

#### 4. WINDING SEQUENCE:



#### 5. SCHEMATIC:



REPORT	BY	CHECK	APPROVED BY	CUSTOMER :	DATE	
				PART NO : 54P-14093	REV NO.	
				ISSUE NO :	PAGE	4 - 3

6. MATERIAL LIST :

NO.	DESCRIPTION	ITEM	MATERIAL	LIST OF SAMPLE	UL NO.	MANUFACTURER
1	BOBBIN	(1)	PHENOLIC (PM9820) Thickness:0.3mm Min.	✓	E41429	SUMITOMO
2	PIN	(2)	TINNED C.P WIRE Φ0.8	✓		WELL FORE
3	CORE	(3)	FERRITE CORE PQ32/20 JR2KBF1	✓		WUXI SPINEL
4	COPPER WIRE	(4)	POLYURETHANE(2UEW) TYPU-130 MW75-C	✓	E197768	HENG YA
		(5)	POLYURE THANE(USTC)	✓	E220377	TEONGMAO
5	MYLAR TAPE	(6)	POLYESTER FILM #1318-1(Y)	✓	E17385	3M
6	EPOXY		6020H	✓	E229633	WELLS
7	VARNISH		WP-2952F-2G	✓	E72979	HITACHI

REPORT BY	CHECK BY	APPROVED BY	CUSTOMER :	DATE	
			PART NO : 54P-14093	REV NO.	
			ISSUE NO :	PAGE	4 - 4