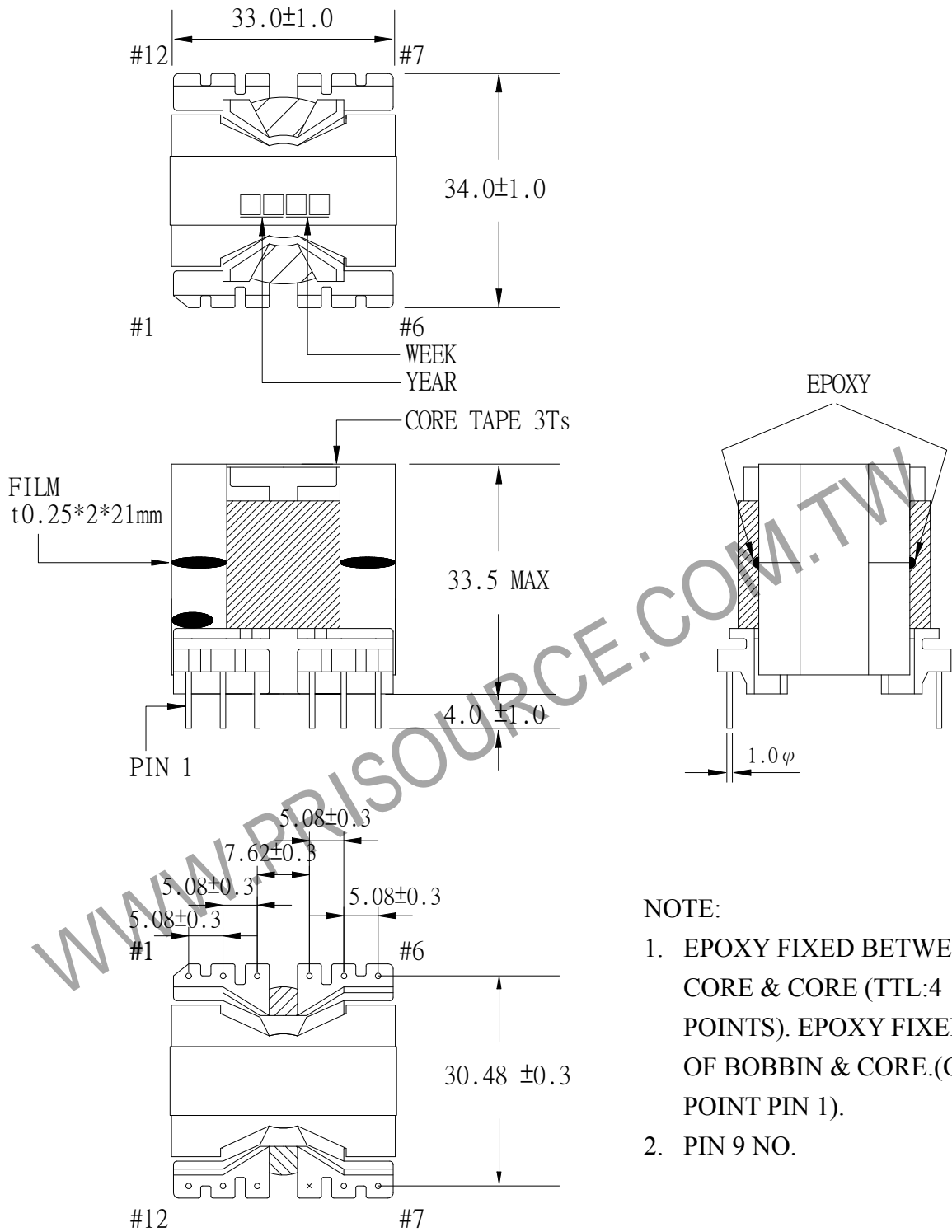


1. MECHANICAL & ASSEMBLY :



NOTE:

1. EPOXY FIXED BETWEEN CORE & CORE (TTL:4 POINTS). EPOXY FIXED TOP OF BOBBIN & CORE.(ONE POINT PIN 1).
2. PIN 9 NO.

UNIT : m/ m

REPORT BY	CHECK BY	APPROVED BY	CUSTOMER :	DATE	
			PART NO : 54P-13113	REV NO.	
			ISSUE NO :	PAGE	4 - 1

2. WINDING CONFIGURATION :

STEP	WINDING	MARGIN TAPE	START-FINISH	COPPER WIRE	TURNS	LAYER TAPE	METHOD
1	FUSE		4 - 5	K13F	1PC	1T	
2	N1		4 - 2	0.35φ	250	1T/1T/3Ts	CLOSE
3	N2		11 - 8	0.35φ	250	1T/1T/3Ts	CLOSE

NOTE:

3. ELECTRICAL CHARACTERISTICS :

PIN NO.	INDUCTANCE 1.0KHz, 0.3Vrms	LEAKAGE INDUCTANCE KHz, Vrms	VOLTAGE RATIO(V) f= 20KHz	DCR MAX. AT 25°C
2 - 5	12.0mH±10%			
4 - 2			INPUT 1Vrms	3.5 Ω
11 - 8			0.9919V±3.0%	4.0 Ω

HI-POT TEST : (AT 0.5mA, 2 SEC)

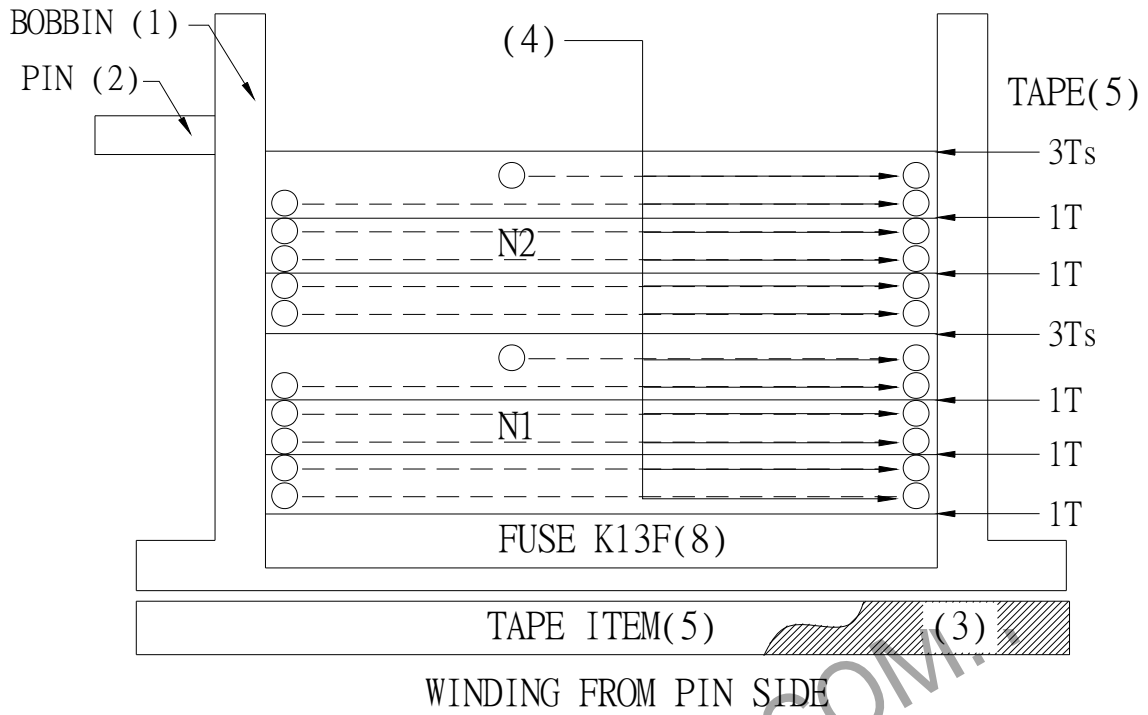
N1 TO N2 2400 VAC
N1,N2 TO CORE 2400 VAC

INSULATION RESISTANCE: (AT DC 500V)

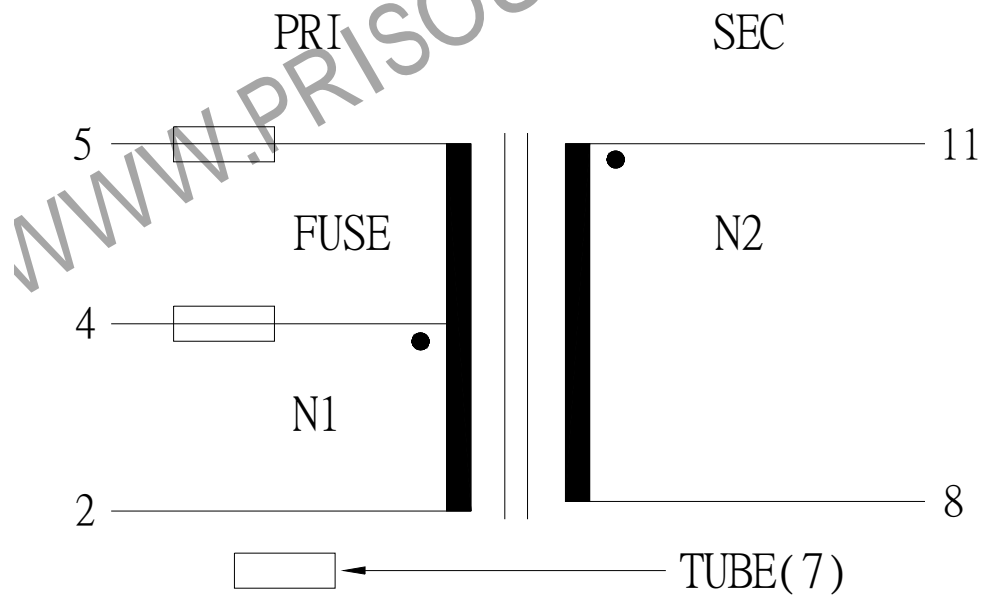
N1 TO N2 100 MΩ MIN.
N1,N2 TO CORE 100 MΩ MIN.

REPORT BY	CHECK BY	APPROVED BY	CUSTOMER :	DATE
			PART NO : 54P-13113	REV NO.
			ISSUE NO :	PAGE 4 - 2

4. WINDING SEQUENCE :



5. SCHEMATIC :



REPORT BY	CHECK BY	APPROVED BY	CUSTOMER :	DATE	
			PART NO : 54P-13113	REV NO.	
			ISSUE NO :	PAGE	4 - 3

6 . MATERIALS LIST :

NO	DESCRIPTION	ITEM	MATERIAL	LIST OF SAMPLE	UL NO.	MANUFACTURE
1	BOBBIN	(1)	PHENOLIC (PM9820) Thickness:0.30mm Min.	√	E41429	SUMITOMO
2	PIN	(2)	TINNED C.P WIRE $\phi 1.0$	√		WELL FORE
3	CORE	(3)	FERRITE CORE PQ32/30 TPW33	√		TDG
4	COPPER WIRE	(4)	POLYURETHANE (1UEW) TYPU-130 MW75-C	√	E197768	HENG YA
5	MYLAR TAPE	(5)	POLYESTER FILM 1318-1 Y,B #1318-2 Y	√	E17385	3M
6	FILM	(6)	t0.25x2x21mm	√	E86511	TORAY
7	TUBE	(7)	SILICON TUBE RSU-1	√	E67922	NISSEI
8	FUSE	(8)	K13F	√		亞德美
9	EPOXY		EP-138	√		CEMEDINE
10	VARNISH		TVB2180T	√	E83702	KYOCERA
REPORT BY	CHECK BY	APPROVED	CUSTOMER :		DATE	
			PART NO : 54P-13113		REV NO.	
			ISSUE NO :		PAGE	4 - 4