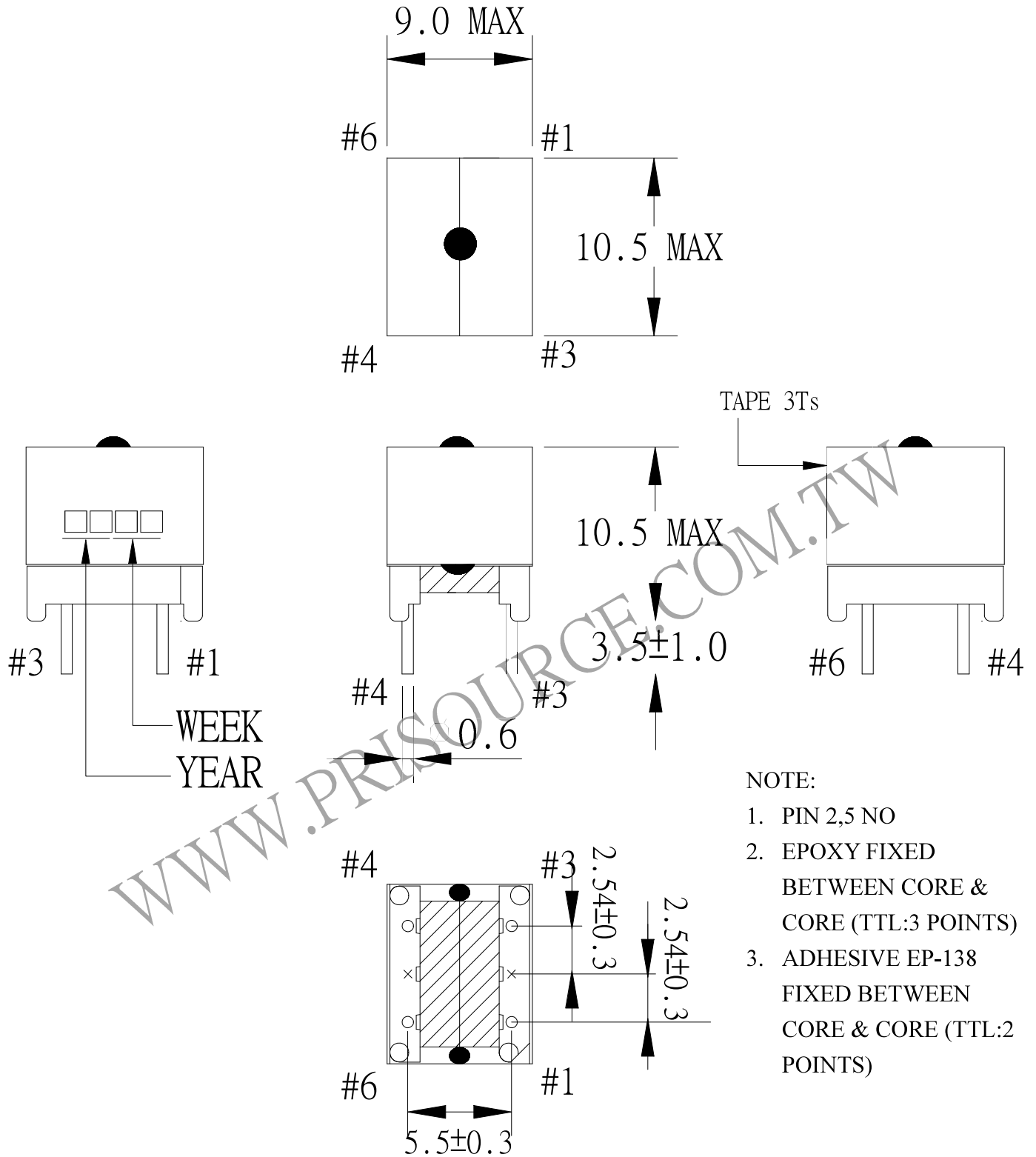


1. MECHANICAL & ASSEMBLY :



NOTE:

1. PIN 2,5 NO
2. EPOXY FIXED BETWEEN CORE & CORE (TTL:3 POINTS)
3. ADHESIVE EP-138 FIXED BETWEEN CORE & CORE (TTL:2 POINTS)

UNIT : m/m

REPORT	BY	CHECK	BY	APPROVED	BY	CUSTOMER :	DATE	
						PART NO : 54P-13109	REV NO.	
						ISSUE NO :	PAGE	4 - 1

2. WINDING CONFIGURATION:

STEP	WINDING	MARGIN TAPE	START-FINISH	COPPER WIRE	TURNS	LAYER TAPE	METHOD
1	N1		3 - 1	0.07φ	123	2Ts	CLOSE
2	N2		4 - 6	0.07φ	125	2Ts	CLOSE

NOTE:

3. ELECTRICAL CHARACTERISTICS:

PIN NO.	INDUCTANCE 1.0KHz, 1.0Vrms	LEAKAGE INDUCTANCE KHz, Vrms	VOLTAGE RATIO(V) F= 20 KHz	DCR MAX. AT 25°C
3 - 1	16.25mH ~ 31.88mH		INPUT 1 Vrms	10.5Ω
4 - 6			1.010 Vrms±3.0%	11.0Ω

HI-POT TEST :(AT 0.5 mA, 2 SEC.)

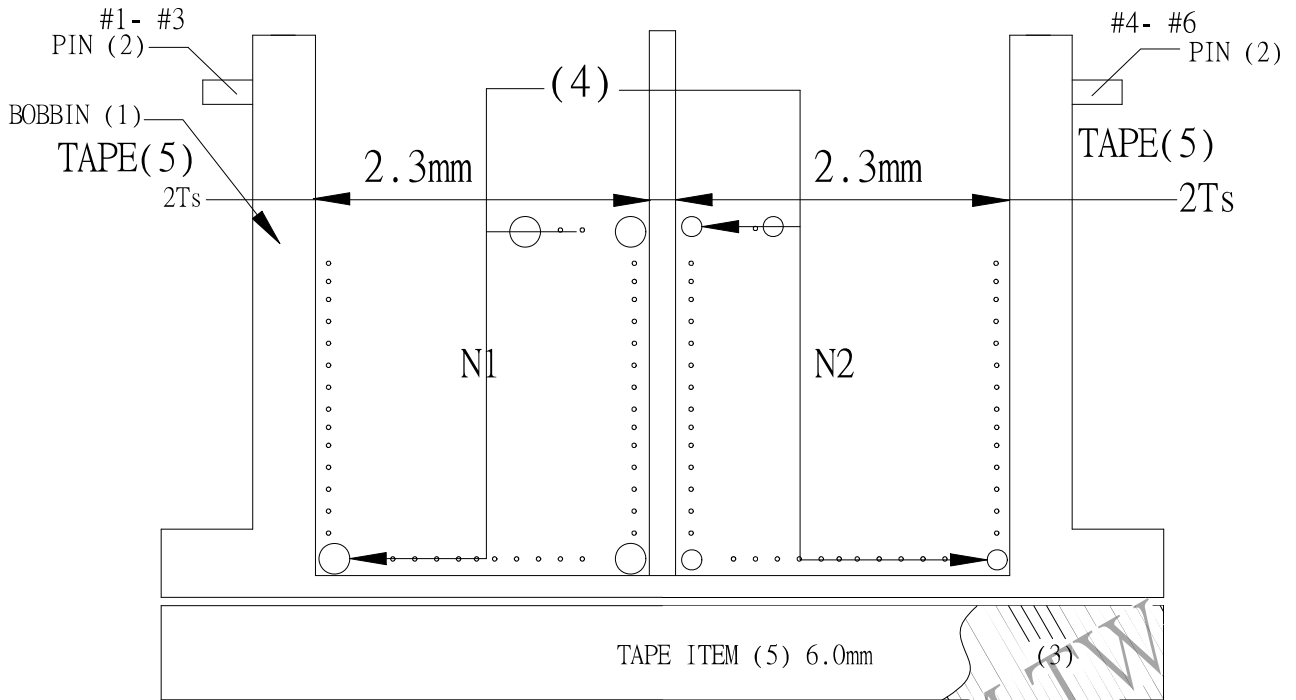
PRI. TO SEC. 2400 VAC

INSULATION RESISTANCE:(AT DC 500V)

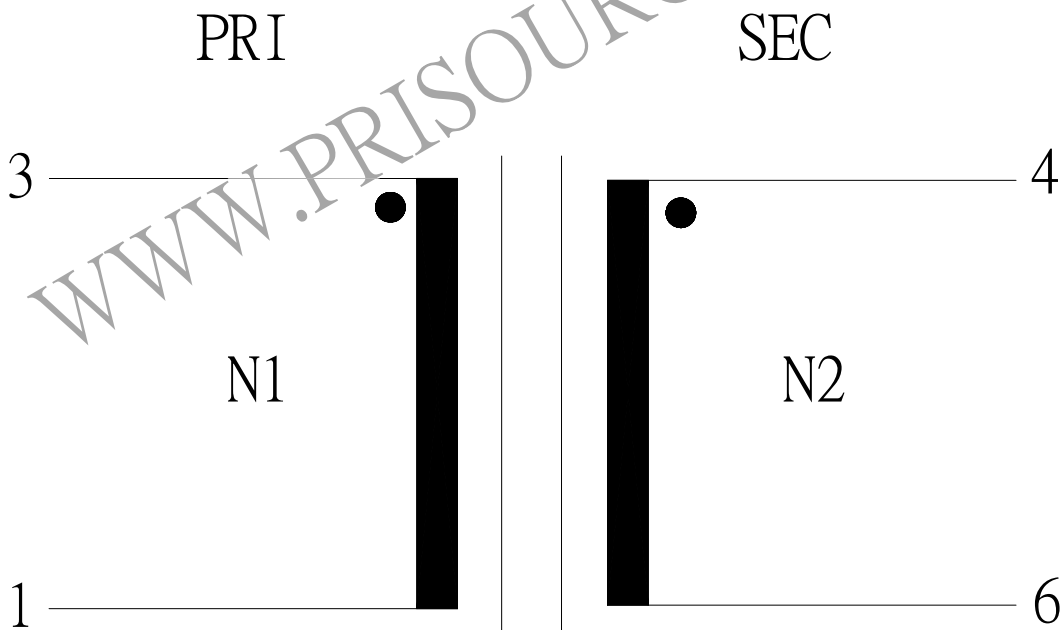
PRI. TO SEC. 100 MΩ MIN.

REPORT BY	CHECK BY	APPROVED BY	CUSTOMER :	DATE	
			PART NO : 54P-13109	REV NO.	
			ISSUE NO :	PAGE	4 - 2

4. WINDING SEQUENCE:



5. SCHEMATIC:



REPORT	BY	CHECK	BY	APPROVED	BY	CUSTOMER :	DATE	
						PART NO : 54P-13109	REV NO.	
						ISSUE NO :	PAGE	4 - 3