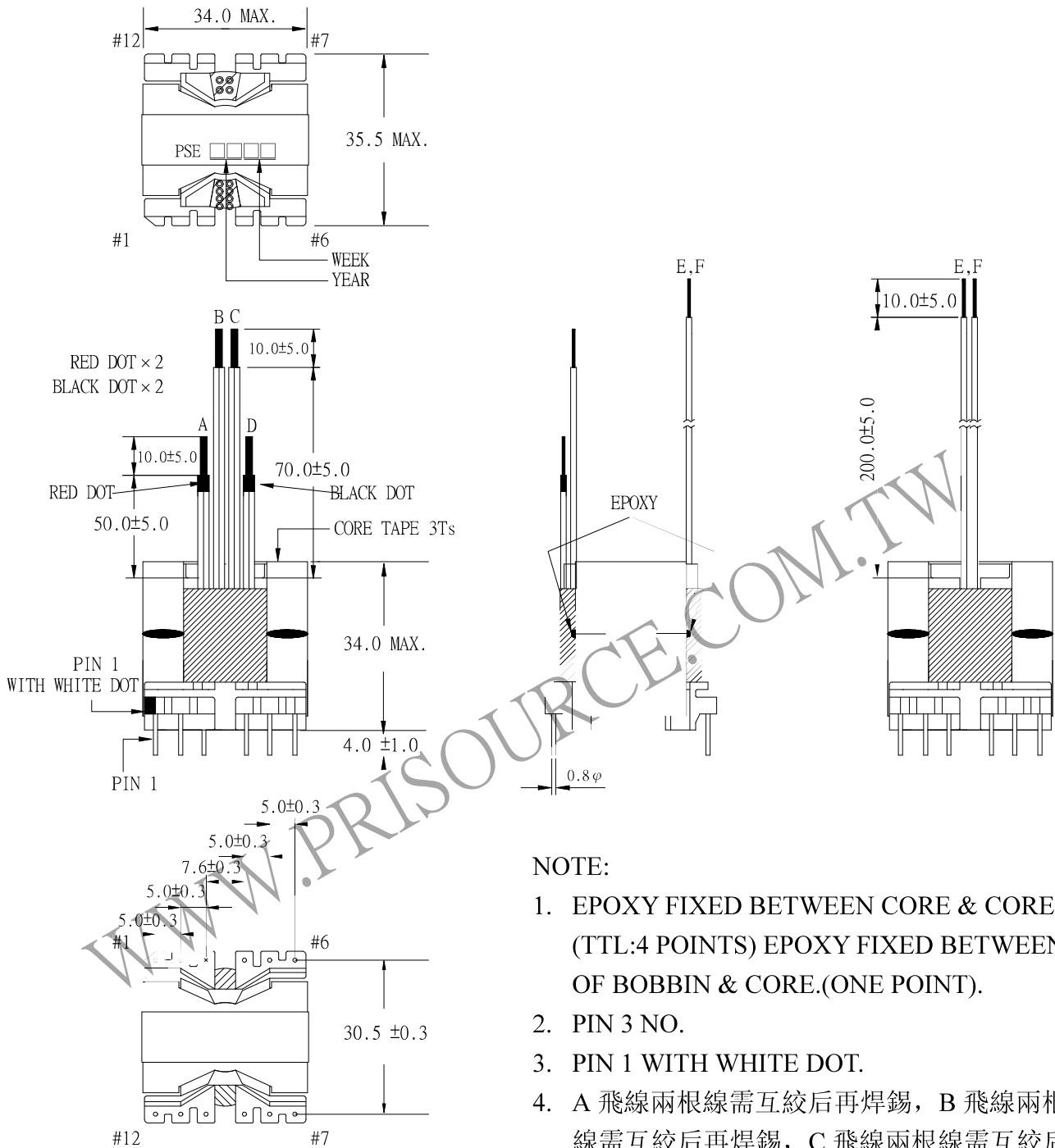


# 1. V MECHANICAL & ASSEMBLY :



UNIT : m/m

REPORT	BY	CHECK	BY	APPROVED	BY	CUSTOMER :	DATE
						PART NO : 54P-13056	REV NO.
						ISSUE NO :	PAGE
							4 - 1

## 2. WINDING CONFIGURATION :

STEP	WINDING	MARGIN TAPE	START-FINISH	COPPER WIRE	TURNS	LAYER TAPE	METHOD	TUBE
1	P1 1/2	2.0/2.0mm×1T	A - B	0.50φ×2	7	1T	SPACE	1.5φ
2	P2 1/2	2.0/2.0mm×1T	C - D	0.50φ×2	7	1T	SPACE	1.5φ
3	S1	2.0/2.0mm×1T	8 - 7	TEX-E 0.50φ×2	2	1T	SPACE	
4	S2	2.0/2.0mm×1T	10 - 9	TEX-E 0.50φ×2	4	1T	SPACE	
5	S3	2.0/2.0mm×1T	12 - 11	TEX-E 0.50φ×2	4	1T	SPACE	
6	M1	2.0/2.0mm×1T	F - E	0.35φ	2	1T	SPACE	1.5φ
7	P1 2/2	2.0/2.0mm×1T	A - B	0.50φ×2	7	1T	SPACE	1.5φ
8	P2 2/2	2.0/2.0mm×1T	C - D	0.50φ×2	7	1T	SPACE	1.5φ
9	P3	2.0/2.0mm×1T	1 - 2	0.35φ	2	3Ts	SPACE	

NOTE: A 飛線兩根線需互絞后再焊錫, B 飛線兩根線需互絞后再焊錫, C 飛線兩根線需互絞后再焊錫, D 飛線兩根線需互絞后再焊錫,

## 3. ELECTRICAL CHARACTERISTICS :

PIN NO.	INDUCTANCE 1.0 KHz, 1.0Vrms	INDUCTANCE KHz, Vrms	VOLTAGE RATIO(V) f= 20KHz	DCR (MAX) AT 25°C
A - B	17.5uH±10%		INPUT 0.1Vrms	16.0 mΩ.
C - D			0.0994Vrms±4.0%	17.0 mΩ.
8 - 7			0.0284Vrms±5.0%	9.50 mΩ.
10 - 9			0.0568Vrms±5.0%	15.5 mΩ.
12 - 11			0.0567Vrms±5.0%	17.5 mΩ.
F - E			0.0283Vrms±5.0%	124.0 mΩ.
1 - 2			0.0283Vrms±5.0%	46.5mΩ.

HI-POT TEST : (AT 10 mA, 2 SEC ROUTINE TEST)

(AT 10 mA, 1 MIN TYPE TEST)

PRI. TO CORE. 3600 VAC

3000 VAC

SEC. TO CORE. 3600 VAC

3000 VAC

M. TO CORE. 3600 VAC

3000 VAC

PRI. TO SEC. 3600 VAC

3000 VAC

M. TO SEC. 3600 VAC

3000 VAC

PRI. TO M. 1200 VAC

1000 VAC

INSULATION RESISTANCE: (AT DC500V)

PRI. TO CORE. 100 MΩ MIN.

SEC. TO CORE. 100 MΩ MIN.

M. TO CORE. 100 MΩ MIN.

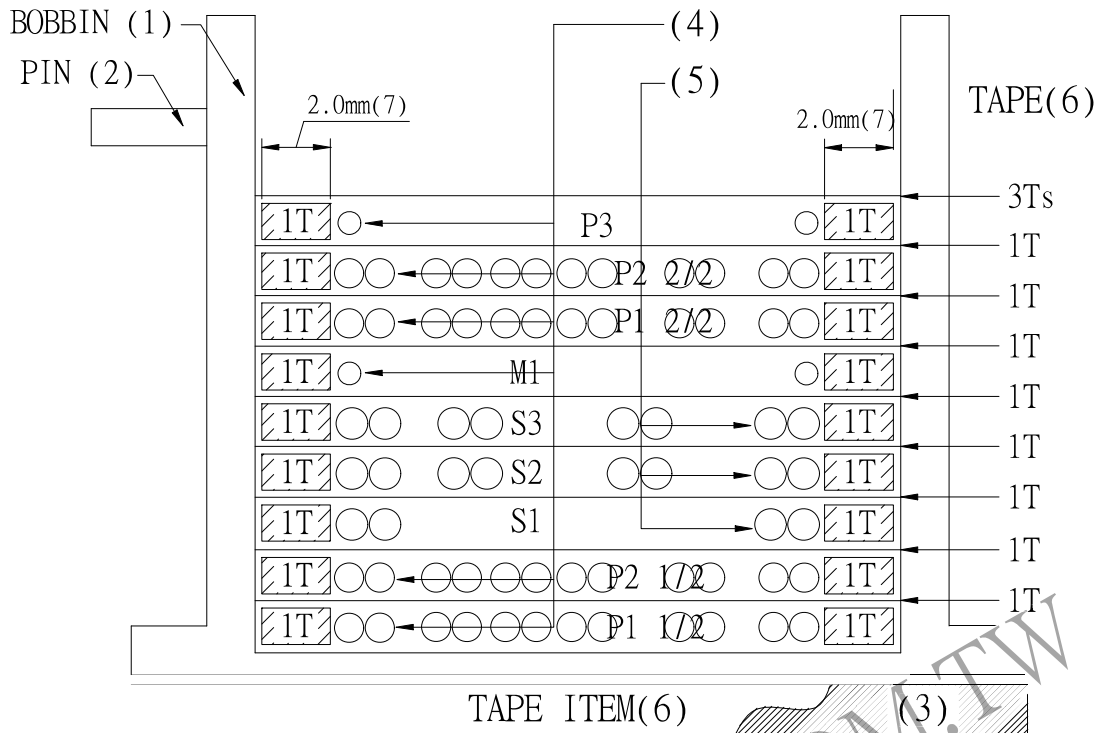
PRI. TO SEC. 100 MΩ MIN.

M. TO SEC. 100 MΩ MIN.

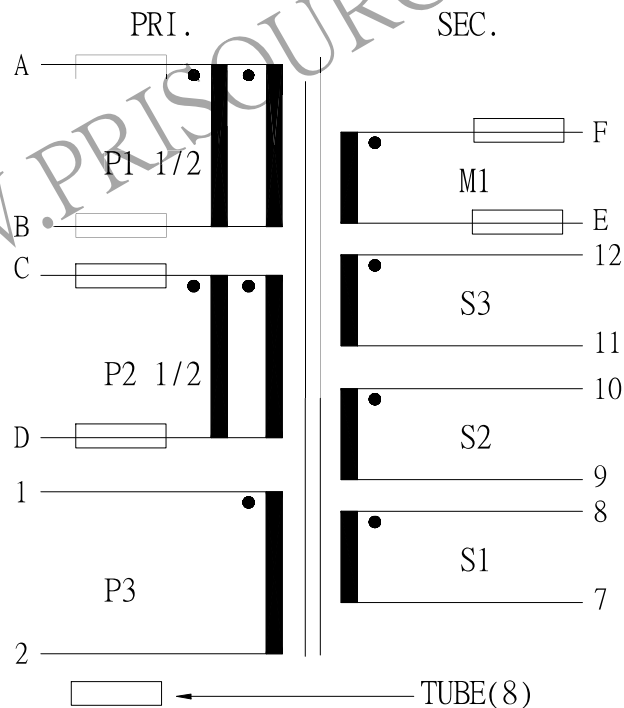
PRI. TO M. 100 MΩ MIN.

REPORT BY	CHECK BY	APPROVED BY	CUSTOMER :	DATE
			PART NO : 54P-13056	REV
			ISSUE NO :	PAGE 4 - 2

#### 4. WINDING SEQUENCE:



#### 5. SCHEMATIC:



REPORT BY	CHECK BY	APPROVED BY	CUSTOMER :	DATE
			PART NO : 54P-13056	REV NO.
			ISSUE NO :	PAGE
				4 - 3