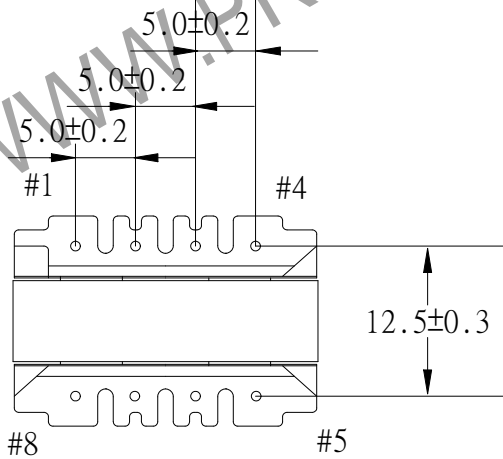
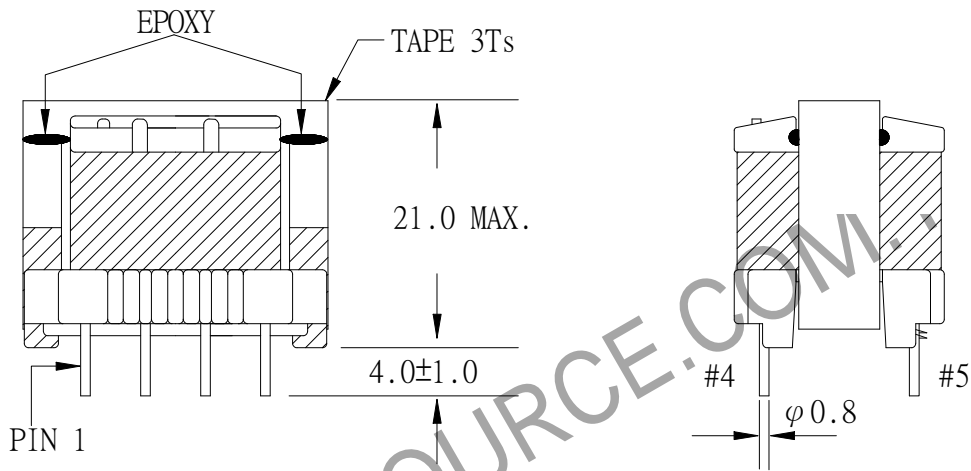
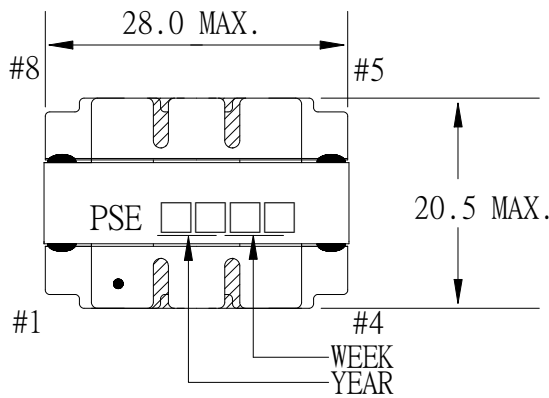


1. MECHANICAL & ASSEMBLY :



NOTE:

1. EPOXY FIXED BETWEEN CORE & CORE (TTL:4 POINTS) EPOXY FIXED TOP OF BOBBIN & CORE.(ONE POINT AT PIN1-4 SIDE).

UNIT : m/ m

REPORT BY	CHECK BY	APPROVED BY	CUSTOMER :	DATE	
			PART NO : 54P-13044	REV NO.	
			ISSUE NO :	PAGE	4 - 1

## 2. WINDING CONFIGURATION :

STEP	WINDING	MARGIN TAPE	START-FINISH	COPPER WIRE	TURNS	TUBE	LAYER TAPE	METHOD
1	P1-1	~/ $3.0\text{mm} \times 1\text{T}$	1 - A	$0.10\phi$	108	#24	1T/1T	CLOSE
2	S1	~/ $1.5\text{mm} \times 5\text{T}_s$	7 - 8	TEX-E $0.20\phi$	69	#24	1T	CLOSE
3	P1-2	~/ $3.0\text{mm} \times 1\text{T}$	A - 2	$0.10\phi$	108	#24	1T/1T	CLOSE
4	S2	~/ $1.5\text{mm} \times 5\text{T}_s$	5 - 6	TEX-E $0.20\phi$	69	#24	1T	CLOSE
5	P2	~/ $3.0\text{mm} \times 1\text{T}$	3 - 4	$0.10\phi \times 2$	18		1T	CLOSE

NOTE: A WIRE NEED TO RETROFLEX PIN SIDE AND THEN IT COVERED WITH LAYER TAPE 2Ts.

## 3. ELECTRICAL CHARACTERISTICS :

PIN NO.	INDUCTANCE 1 KHz, $1\text{V}_{\text{rms}}$	LEAKAGE INDUCTANCE KHz, $\text{V}_{\text{rms}}$	VOLTAGE RATIO(V) f= 20KHz INPUT 1V	DCR MAX. AT $25^\circ\text{C}$
1 - 2	$9.331\text{mH} \pm 10\%$			$26.0 \Omega$
3 - 4			$0.0833\text{V}_{\text{rms}} \pm 7.0\%$	$1.5 \Omega$
7 - 8			$0.3190\text{V}_{\text{rms}} \pm 4.0\%$	$2.0 \Omega$
5 - 6			$0.3190\text{V}_{\text{rms}} \pm 4.0\%$	$2.5 \Omega$

HI-POT TEST : (AT  $1\text{mA}$ , 2 SEC)

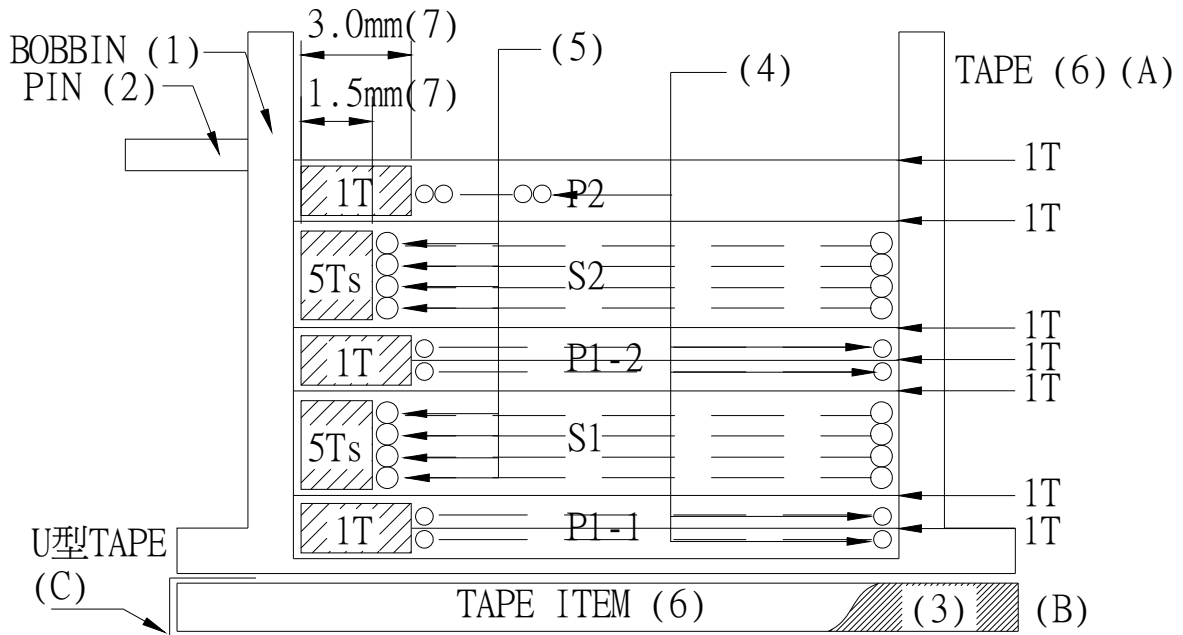
PRI	TO	SEC	3600VAC
PRI	TO	CORE	1800VAC
SEC	TO	CORE	1800VAC

INSULATION RESISTANCE: (AT DC 1500V)

PRI	TO	SEC	$100\text{M}\Omega$	MIN.
PRI	TO	CORE	$100\text{M}\Omega$	MIN.
SEC	TO	CORE	$100\text{M}\Omega$	MIN.

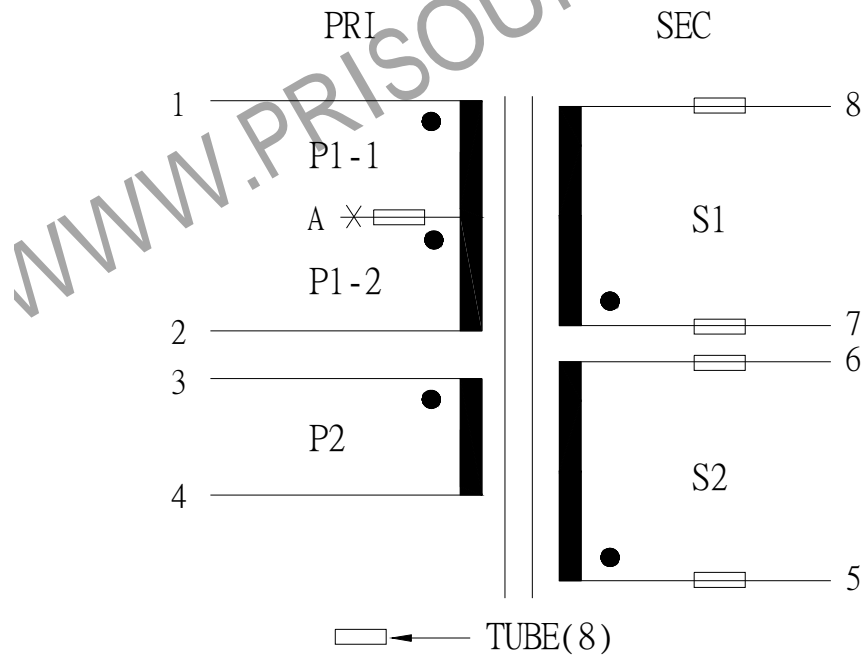
REPORT BY	CHECK BY	APPROVED BY	CUSTOMER :	DATE	
			PART NO : 54P-13044	REV NO.	
			ISSUE NO :	PAGE	4 - 2

#### 4. WINDING SEQUENCE:



P1-1, S1, S2, P2 WONDING FROM PIN SIDE  
P1-2 WONDING FROM TOP SIDE

#### 5. SCHEMATIC:



REPORT BY	CHECK BY	APPROVED	CUSTOMER :	DATE
			PART NO : 54P-13044	REV NO.
			ISSUE NO :	PAGE 4 - 3

6. MATERIAL LIST :

NO.	DESCRIPTION	ITEM	MATERIAL	LIST OF SAMPLE	UL NO.	MANUFACTURER
1	BOBBIN	(1)	PHENOLIC (T375J) Thickness:0.80mm Min.	✓	E59481	CHANG CHUN
2	PIN	(2)	TINNED C.P WIRE φ 0.8	✓		WELL FORE
3	CORE	(3)	FERRITE CORE EI-25 TP4 CORE GAP:0.2mm	✓		TDG
	COPPER WIRE	(4)	POLYURETHANE (1UEW) TYPU-130 MW75-C	✓	E197768	HENG YA
4	TRIPLE WIRE	(5)	TEX-E	✓	E206440	FURUKAWA
5	MYLAR TAPE	(6)	POLYESTER FILM #1350F-1 Y 厚度: 0.06mm (A) W=10.0mm (B) W=5.0mm (C) W=12.0mm (D) W=6.5mm	✓	E17385	3M
6	MARGIN TAPE	(7)	COMPOSITE FILM #44D-A, #44T-A	✓	E17385	3M
7	TUBE	(8)	TEFLON TUBE TFL	✓	E156256	GREAT HOLDING
8	EPOXY		6020H	✓	E229633	WELLS
9	VARNISH		WP-2952F-2G	✓	E72979	HITACHI

REPORT BY	CHECK BY	APPROVED BY	CUSTOMER :	DATE	
			PART NO : 54P-13044	REV NO.	
			ISSUE NO :	PAGE	4 - 4